




	4.1 Electrical and Technical Tapes .....	104
	4.2 Pre-Insulated Terminals .....	110
	4.3 Lugs and Links .....	120
	4.4 Electrical Installation Rack a Tier .....	133
	4.5 Cast Resin Technology .....	137
	4.6 Gel Technology .....	139



## HelaTape

HellermannTyton offers a comprehensive range of Vinyl and Rubber Tapes for bundling, insulating, fixing, sealing and marking applications around all kinds of electrical applications. Vinyl electrical tapes are designed for low voltage applications and available in different dimensions and colours.

### Vinyl Electrical Tapes - General Purpose Vinyl Electrical Tape

**HelaTape Flex15 (0.15mm x 18mm x 20m)**

#### Features and Benefits

- Flame retardant
- Vinyl electrical tape in many different colours
- Used for insulation, protection, fixing, maintenance, colour coding and more
- Good resistance to abrasion, sunlight, moisture, chemicals, and varying weather conditions
- Highly flexible with outstanding adhesion performance
- Harnessing of wires and cables
- Suitable for mechanical and electrical applications up to 1 kV
- VDE approved according to IEC 60454-3-1-6/F-PVCP/90



Highly flexible and with good adhesion levels HelaTape Flex 15 can be used in several applications.



<b>MATERIAL</b>	Polyvinylchloride (PVC)
<b>Dielectric Strength</b>	40 kV/mm (Wet)
<b>Adhesion to Steel</b>	2.2 N/cm
<b>Adhesion to Backing</b>	2.0 N/cm
<b>Elongation at break</b>	200 %
<b>Tensile Strength</b>	28 N/cm
<b>Operating Temperature</b>	+90 °C

Test method used IEC 60454-2.



PART NO.	Thickness (mm)	Length (M)	Width (mm)	Colour	Pack Qty	Article-No.
FLEX15BK	0.15	20.0	18.0	Black	10 pcs.	710-00155
FLEX15RD	0.15	20.0	18.0	Red	10 pcs.	710-00152
FLEX15BU	0.15	20.0	18.0	Blue	10 pcs.	710-00151
FLEX15WT	0.15	20.0	18.0	White	10 pcs.	710-00156
FLEX15GN	0.15	20.0	19.0	Green	10 pcs.	710-00154
FLEX15YE	0.15	20.0	19.0	Yellow	10 pcs.	710-00153
FLEX15GNYE	0.15	20.0	18.0	Green yellow	10 pcs.	710-00157
FLEX15RP	0.15	20.0	18.0	Rainbow pack	10 pcs.	710-00165

All dimensions in mm. Subject to technical changes.





### Vinyl Electrical Tapes - Industrial Grade Vinyl Electrical Tape

**HelaTape Flex18 (0.18mm x 18mm x 20m)**

#### Features and Benefits

- Flame retardant
- Used as primary insulation for splices up to 600 volts
- Provides a protective outer jacket to splices at higher voltages
- Wrapping wire harnesses and insulating degaussing coils
- Colour coding electrical circuits
- Lead-free
- Resistant to sun, water, acids, alkalies, corrosive chemicals



HelaTape Flex18 for general splicing purposes.



<b>Material</b>	Polyvinylchloride (PVC)
<b>Dielectric Strength</b>	51 kV/mm
<b>Adhesion to Steel</b>	2.6 N/cm
<b>Adhesion to Backing</b>	2.6 N/cm
<b>Elongation at break</b>	250 %
<b>Tensile Strength</b>	28 N/cm
<b>Operating Temperature</b>	+80 °C

Test method used ASTM-D-1000.



PART NO.	Thickness (mm)	Length (M)	Width (mm)	Colour	Pack Qty	Article-No.
FLEX18BK	0.18	20.0	18.0	Black	10 pcs.	710-00201
FLEX18WT	0.18	20.0	18.0	White	10 pcs.	710-00209
FLEX18RD	0.18	20.0	18.0	Red	10 pcs.	710-00206
FLEX18BU	0.18	20.0	18.0	Blue	10 pcs.	710-00200
FLEX18GN	0.18	20.0	19.0	Green	10 pcs.	710-00208
FLEX18YE	0.18	20.0	19.0	Yellow	10 pcs.	710-00207
FLEX18GNYE	0.18	20.0	18.0	Green yellow	10 pcs.	710-00210
FLEX18RP	0.18	20.0	18.0	Rainbow pack	10 pcs.	710-00215

All dimensions in mm. Subject to technical changes.





## HelaTape Flex – Premium vinyl electrical tapes

**HelaTape Flex1000+** (0.18mm x 19mm x 20m)

### Features and Benefits

- Flame retardant
- All-weather, professional grade, self-adhesive vinyl insulating tape
- Excellent performance and durability from -18°C to +105°C
- Used for insulation, protection, fixing, maintenance, colour coding
- Pressure sensitive high quality rubber based adhesive
- Performs continuously at low temperature environment
- Excellent resistance to abrasion, water, chemicals, corrosion and sun
- Used as primary insulation for splices up to 600 volts
- Protective jacketing for low–high voltage splices and repairs
- Harnessing of wires and cables
- For indoor and outdoor applications



*HelaTape Flex 1000+ provides excellent performance over a wide range of temperatures.*



*HelaTape Flex 1000+.*

<b>MATERIAL</b>	Polyvinylchloride (PVC)
<b>Dielectric Strength</b>	70 kV/mm (black)
<b>Adhesion to Steel</b>	3,0 N/cm
<b>Adhesion to Backing</b>	2,7 N/cm
<b>Elongation at break</b>	300 %
<b>Tensile Strength</b>	35 N/cm
<b>Operating Temperature</b>	-18 °C to +105 °C

*Test method used ASTM-D-1000.*



PART NO.	Thickness (mm)	Length (M)	Width (mm)	Colour	Pack Qty	Article-No.
FLEX1000BK	0.18	20	19.0	Black	Each	710-10602
FLEX1000RD	0.18	20	19.0	Re	Each	710-10604
FLEX1000BL	0.18	20	19.0	Blue	Each	710-10603
FLEX1000WT	0.18	20	19.0	White	Each	710-10607

All dimensions in mm. Subject to technical changes.



## Self-amalgamating Tapes – Silicone Rubber Tape

**HelaTape Power 800 (0.51mm x 25mm x 9.1m)**

### Features and benefits

- Self-amalgamating and self-cleaning, chemically cross-linked silicone rubber tape
- Triangular cross-section with centre line for precise half-overlapping
- Resistant to creepage and surface erosion
- Fuses into solid mass after application
- Weather, UV and oil resistant
- Recommended use for high temperature silicone insulated cables and outdoor machinery and transformers



HelaTape Power 800 is a silicone rubber tape with triangular cross-section.

<b>MATERIAL</b>	Silicone (SI)
<b>Operating Temperature</b>	+180 °C
<b>Tensile Strength</b>	7 N/mm <sup>2</sup>
<b>Elongation at break</b>	400 %
<b>Volume Resistance</b>	10 <sup>14</sup> Ω cm
<b>Dielectric Strength</b>	23.5 kV/mm



### HelaTape Power 800

PART NO.	Thickness (mm)	Length (M)	Width (W)	Colour	Pack Qty	Article-No.
POWER800	0.51	9.1	25.0	Grey (GY)	Each	711-10400

All dimensions in mm. Subject to technical changes.  
Minimum Order Quantity (MOQ) may differ from package content.



### Self-amalgamating Tapes - High Voltage Rubber Tape

#### HelaTape Power 810 (EPR)

(0.76mm x 19mm x 9.1m)

#### Features and Benefits

- Self-amalgamating tape for insulating and jacketing splices up to 69 kV
- Halogen-free with outstanding corona, ozone and UV-resistance
- Ideal for sealing of terminations, electrical connections, and cable jacket repair
- Void-free, electrically stable layering
- Protects bus bar components
- Excellent moisture, corrosion and chemical resistance
- Compatible with all extruded cable insulations

<b>MATERIAL</b>	Ethylene Propylene Rubber (EPR)
<b>Operating Temperature</b>	+90 °C
<b>Intermittent Operating Temperature</b>	+130 °C
<b>Water Absorption</b>	0.06 %
<b>Tensile Strength</b>	2,4 N/mm <sup>2</sup>
<b>Elongation at break</b>	750 %
<b>Volume Resistance</b>	10 <sup>16</sup> Ω cm
<b>Dielectric Strength</b>	30 kV/mm

#### HelaTape Power 810 (EPR)

PART NO.	Thickness (mm)	Length (M)	Width (W)	Colour	EAN bar code	Pack Qty	Article-No.
POWER810	0.76	9.1	19.0	Black	4031026548852	Each	711-10401

All dimensions in mm. Subject to technical changes.



HelaTape Power 810 for primary insulation up to 69 kV.

HF ✓

RoHS ✓

### Self-amalgamating Tapes – Medium Voltage Rubber Tape

#### HelaTape Power 700 (PIBR)

(0.5mm x 19mm x 10m)

#### Features and benefits

- Polyisobutylene-based self-amalgamating medium voltage tape
- Insulating and jacketing power cables up to 46 kV
- Provides electrical stability and permanent moisture sealing
- Perfect stretching properties allows fast and uniform application
- Excellent UV, moisture, corrosion and chemical resistance
- Temperature range from -40 °C to +90 °C
- Compatible with all extruded cable insulation materials

<b>MATERIAL</b>	Polyisobutylene Rubber (PIBR)
<b>Operating Temperature</b>	+90 °C
<b>Water Absorption</b>	0.02 %
<b>Tensile Strength</b>	2.4 N/mm <sup>2</sup>
<b>Elongation at break</b>	700 %
<b>Volume Resistance</b>	10 <sup>13</sup> Ω cm
<b>Dielectric Strength</b>	35 kV/mm

#### HelaTape Power 700 (PIBR)

PART NO.	Thickness (mm)	Length (M)	Width (W)	Colour	Pack Qty	Article-No.
POWER700	0.50	10.0	19.0	Black (BK)	Each	711-00308

All dimensions in mm. Subject to technical changes.  
Minimum Order Quantity (MOQ) may differ from package content.



HelaTape Power 700 is a self-amalgamating medium voltage rubber tape.

HF ✓

RoHS ✓



### Wire Harness Tape – Strong, High Temperature Cloth Tape

**HelaTape Protect 250** (0.25mm x 19mm x 25m)

#### Features and benefits

- High temperature Polyester Fabric harnessing tape
- Special acrylate-based adhesive offers very good heat and media resistance
- Very high temperature stability from -40 °C to +150 °C
- Temperature and humidity resistance tested according to LV312
- Very good resistance against abrasion
- Material is very flexible and easy to handle
- Excellent ageing resistance, stable against rotting

<b>MATERIAL</b>	Polyester (PET)
<b>Operating Temperature</b>	-40 °C to +150 °C
<b>Adhesion to Steel</b>	2.5 N/10 mm
<b>Adhesion to Backing</b>	2 N/10 mm
<b>Elongation at break</b>	15 %
<b>Breaking Strength</b>	180 N/10 mm



#### HelaTape Protect 250

PART NO.	Thickness (mm)	Length (M)	Width (W)	Colour	Pack Qty	Article-No.
PROTECT250	0.25	25.0	19.0	Black (BK)	Each	712-10003

All dimensions in mm. Subject to technical changes.  
Minimum Order Quantity (MOQ) may differ from package content.

### Wire Harness Tape – Soft and Flexible Fleece Tape

**HelaTape Protect 300** (0.3mm x 19mm x 25m)

#### Features and benefits

- Soft Polyester Fleece harnessing tape
- High noise reduction and very high resistance against abrasion
- Synthetic rubber based adhesive offers good heat and media resistance
- High temperature stability from -40 °C to +105 °C
- Material is very flexible and tearable by hand
- Excellent ageing resistance and stable against rotting

<b>MATERIAL</b>	Polyester (PET)
<b>Operating Temperature</b>	-40 °C to +105 °C
<b>Adhesion to Steel</b>	2 N/10 mm
<b>Adhesion to Backing</b>	2 N/10 mm
<b>Elongation at break</b>	10 %
<b>Breaking Strength</b>	30 N/10 mm



*HelaTape Protect 300 provides high noise reduction and media resistance.*



#### HelaTape Protect 300

PART NO.	Thickness (mm)	Length (M)	Width (W)	Colour	Pack Qty	Article-No.
PROTECT300	0.30	25.0	19.0	Black (BK)	Each	712-10001

All dimensions in mm. Subject to technical changes.  
Minimum Order Quantity (MOQ) may differ from package content.





### Pre-insulated terminals feature:

- Double Grip with special double crimp for use in high vibration areas (use HYYT7 crimper)
- Three piece manufacturing process
- Colour coded vinyl insulated for easier identification of cable sizes
- Temperature rating on vinyl is +75°C, our Nylon range is rated at +105°C
- Resealable bags
- Brass Male/Female funnel entries with Sleeve ring connectors

Terminal colour	RD	BL	YW
Conductor range (mm <sup>2</sup> )	0.5-1.5	1.5-2.5	4.0-6.0
Strip length for terminals (mm)	4-5	5-6	6-7
Strip length for inline splice (mm)	7-8	7-8	7-8
Max Voltage (V) Copper	600	600	600
Max Current (A) Copper	19	27	48
Max Voltage (V) Brass	300	300	300
Max Current (A) Brass	10	15	24

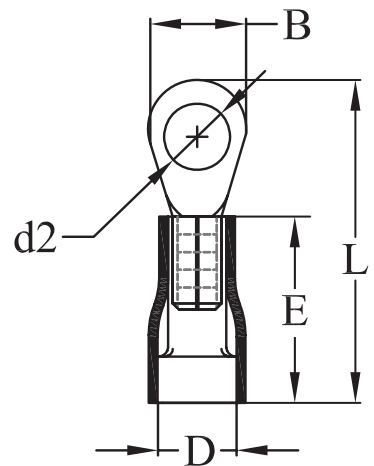


Packaging for double grip pre-insulated terminals.



### DOUBLE GRIP RING TERMINALS

MATERIAL: COPPER/PVC				Dimensions (mm)				
PART NO	Style	Colour	Pack Qty	d2	B	L	D	E
RD1-3			100	3.20	5.50	17.00	4.30	10.00
RD1-4				4.30	8.00	21.20		
RD1-5				5.30	8.00	21.20		
RD1-6				6.40	11.60	27.10		
RD1-8				8.40	11.60	27.10		
RD1-10				10.50	13.70	31.00		
RD1-12				13.00	19.00	34.50		
RD2-3			100	3.20	8.50	22.50	5.30	10.70
RD2-4				4.30	8.50	22.50		
RD2-5				5.30	9.50	22.50		
RD2-6				6.40	12.00	27.60		
RD2-8				8.40	12.00	27.60		
RD2-10				10.50	13.70	31.40		
RD2-12			13.00	19.00	35.00	50		
RD5-3			100	3.20	9.50	26.20	6.80	13.60
RD5-4				4.30	9.50	26.20		
RD5-5				5.30	9.50	26.20		
RD5-6			50	6.40	12.00	32.20		
RD5-8				8.40	15.00	34.40		
RD5-10				10.50	15.00	34.40		
RD5-12				13.00	19.20	39.20		

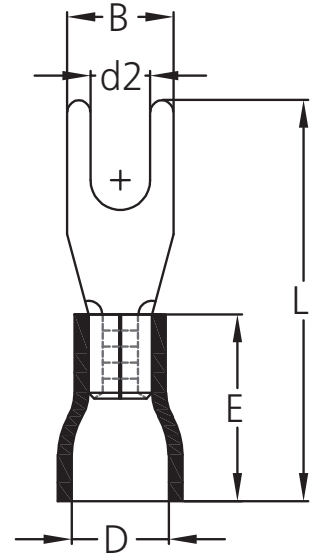






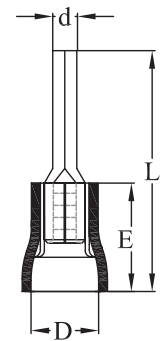
## DOUBLE GRIP SPADES/FORKS

MATERIAL: COPPER/PVC				Dimensions (mm)				
PART NO	Style	Colour	Pack Qty	d2	B	L	D	E
SD1-3			100	3.20	5.70	27.50	4.30	10.00
SD1-3.5				3.70	6.20	21.50		
SD1-4				4.30	7.20	21.50		
SD1-5				5.30	8.00	21.50		
SD1-6				6.40	9.30	22.50		
PART NO	Style	Colour	Pack Qty	d2	B	L	D	E
SD2-3			100	3.20	5.70	22.00	5.30	10.50
SD2-3.5				3.70	6.20	22.00		
SD2-4				4.30	7.20	22.00		
SD2-5				5.30	8.00	22.00		
SD2-6				6.40	9.30	23.00		
PART NO	Style	Colour	Pack Qty	d2	B	L	D	E
SD5-3			50	3.70	6.30	26.20	6.70	13.60
SD5-4				4.30	8.20	26.20		
SD5-5				5.30	9.00	26.20		
SD5-6				6.40	9.00	30.20		



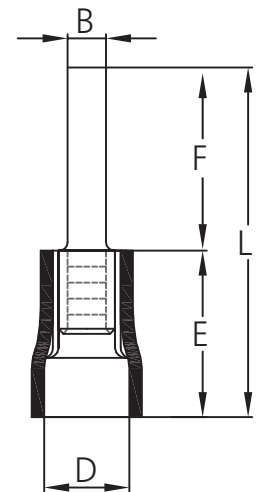
## DOUBLE GRIP PIN CONNECTORS

MATERIAL: COPPER/PVC				Dimensions (mm)			
PART NO	Style	Colour	Pack Qty	d	L	D	E
PD1			100	2.00	19.50	4.30	10.00
PD2			100	2.00	20.00	5.30	10.70
PD5			50	2.70	28.50	6.80	13.60



## DOUBLE GRIP FLAT BLADES

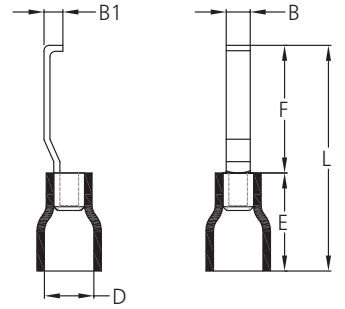
MATERIAL: COPPER/PVC				Dimensions (mm)				
PART NO	Style	Colour	Pack Qty	F	B	L	D	E
FBD1-S			100	10.70	2.40	20.70	4.30	10.00
FBD1-M				14.00	3.00	24.00		
FBD1-L				18.00	2.40	28.00		
PART NO	Style	Colour	Pack Qty	F	B	L	D	E
FBD2-S			100	10.70	2.40	20.70	5.10	10.00
FBD2-M				13.00	2.40	23.00		
FBD2-L				18.00	2.40	28.00		
PART NO	Style	Colour	Pack Qty	F	B	L	D	E
FBD5-S			50	10.00	2.80	22.50	6.80	12.50
FBD5-M				14.00	4.50	26.50		
FBD5-L				18.00	3.00	30.50		





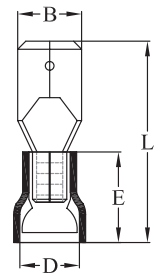
### DOUBLE GRIP LIP BLADES

MATERIAL: COPPER/PVC				Dimensions (mm)					
PART NO	Style	Colour	Pack Qty	B	B1	L	D	E	F
LBD1-N		Red	100	2.80	2.20	27.80	4.30	10.00	17.50
LBD1-W				4.60					
PART NO	Style	Colour	Pack Qty	B	B1	L	D	E	F
LBD2-N		Blue	100	2.80	2.20	28.30	4.70	10.70	17.50
LBD2-W				4.60					
PART NO	Style	Colour	Pack Qty	B	B1	L	D	E	F
LBD5-N		Yellow	50	2.80	3.00	30.00	6.70	13.60	17.30
LBN5-W				4.60					



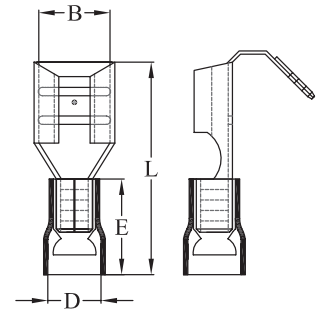
### DOUBLE GRIP QUICK DISCONNECT MALE FUNNEL ENTRY

MATERIAL: BRASS/PVC				Dimensions (mm)			
PART NO	Style	Colour	Pack Qty	B	L	D	E
QDM1-6		Red	100	6.30	22.00	4.10	10.50
QDM2-6		Blue	100	6.30	22.50	5.10	11.00
QDM5-6		Yellow	50	6.30	24.50	6.50	13.50



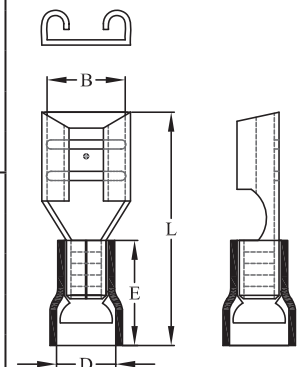
### DOUBLE GRIP QUICK CONNECT / DISCONNECT PIGGY BACK FEMALE/MALE FUNNEL ENTRY

MATERIAL: BRASS/PVC				Dimensions (mm)						
PART NO	Style	Colour	Pack Qty	TAB	B	L	D	E		
QDF1-6P		Red	50	6.4x0.8	6.70	22.50	4.30	10.00		
QDF2-6P						23.00			4.90	11.00
QDF5-6P						26.00				



### DOUBLE GRIP QUICK CONNECT FEMALE FUNNEL ENTRY

MATERIAL: BRASS/PVC				Dimensions (mm)				
PART NO	Style	Colour	Pack Qty	TAB	B	L	D	E
QDF1-3/5		Red	100	2.8x0.5	3.20	19.00	4.30	10.50
QDF1-3/8				2.8x0.8		19.00		
QDF1-5/5				4.8x0.5		19.50		
QDF1-5/8				4.8x0.8		19.50		
QDF1-5/6				6.4x0.8		21.50		
QDF2-3/5		Blue	100	2.8x0.5	3.20	19.50	4.90	11.00
QDF2-3/8				2.8x0.8		19.50		
QDF2-5/5				4.8x0.5		20.00		
QDF2-5/8				4.8x0.8		20.00		
QDF2-6				5.2x0.5		20.00		
QDF5-6		Yellow	50	6.4x0.8	6.70	24.00	6.50	13.50
QDF5-9				9.4x1.2		30.10		





## DOUBLE GRIP QUICK CONNECT FULLY INSULATED FEMALE FUNNEL ENTRY

MATERIAL: BRASS/NYLON <b>HF</b> ✓				Dimensions (mm)						
PART NO	Style	Colour	Pack Qty	TAB	b	B	L	D	E	
QDF1-5F/5		Red	100	4.8x0.5	7.40	5.00	20.50	4.30	10.50	
QDF1-5F/8				4.8x0.8						
QDF2-5F/5		Blue	100	4.8x0.5	7.80	5.00	21.00	4.90	11.50	
QDF2-5F/8				4.8x0.8						

## DOUBLE GRIP NYLON 105°C FULLY INSULATED FEMALE FUNNEL ENTRY

MATERIAL: BRASS/NYLON <b>HF</b> ✓				Dimensions (mm)						
PART NO	Style	Colour	Pack Qty	TAB	b	B	L	D	E	
QDF1-6F		transparent	100	6.4x0.8	9.00	6.70	21.50	4.30	10.50	
QDF2-6F		transparent	100	6.4x0.8			22.00	5.00	11.00	
QDF5-6F		transparent	50	6.4x0.8			26.00	6.60	11.00	

## NYLON FLAG QUICK CONNECT 105°C FULLY INSULATED FEMALE FUNNEL ENTRY

MATERIAL: BRASS/NYLON <b>HF</b> ✓				Dimensions (mm)				
Part no	Style	Colour	Pack Qty	d1	B	L	F	
QDF1-6F90		Red	50	1.7	6.60	16.10	7.90	
QDF2-6F90		Blue	50	2.3				

## DOUBLE GRIP MALE BULLET FUNNEL ENTRY

MATERIAL: BRASS/PVC				Dimensions (mm)				
PART NO	Style	Colour	Pack Qty	B	L	D	E	
BDM1-4		Red	100	5.00	25.00	4.30	10.50	
BDM2-5		Blue	100	5.00	25.00	4.90	11.00	
BDM5-5		Yellow	50	5.00	25.00	7.00	13.00	

## DOUBLE GRIP FEMALE BULLET FUNNEL ENTRY

MATERIAL: BRASS/PVC				Dimensions (mm)					
PART NO	Style	Colour	Pack Qty	b	B	L	D	E	
FDF1-4		Red	100	7.80	4.65	25.00	4.30	10.50	
FDF2-5		Blue	50	7.80	5.65	25.00	4.90	11.00	
FDF5-5		Yellow	50	8.50	5.65	25.00	7.00	13.00	



### DOUBLE GRIP CRIMP LINK

MATERIAL: COPPER/PVC				Dimensions (mm)		
PART NO	Style	Colour	Pack Qty	L	D	d
BS1			100	25.00	4.00	1.70
BS2			100	25.00	4.60	2.30
BS5			50	29.00	6.30	3.40

### HEAT SHRINK SINGLE GRIP CRIMP LINK- WATERPROOF CONNECTORS

MATERIAL: COPPER/PVC				Dimensions (mm)	
PART NO	Style	Colour	Pack Qty	L	d1
BSW1		transparent	100	38.00	2.05
BSW2		transparent	100	35.00	2.75
BSW5		transparent	50	40.50	4.05

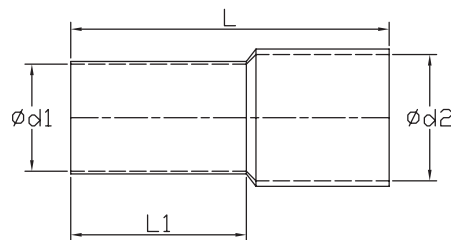
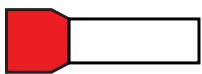
### The HellermannTyton range of nylon & un-insulated bootlace ferrules feature:

- Precise terminations for applications of where fine stranded multi core cable is used
- Reduces the possibility of short circuiting
- Colour coded for easier identification
- Non-insulated range of bootlace ferrules are electro grade copper with electro tinned plated for high conductivity
- Resealable bags
- 105° Continuous operating temperature (Nylon)



Packaging for bootlace ferrules.

### NYLON INSULATED BOOTLACE FERRULES



PART NO.	Description	Colour	Pack Qty	Dimensions (mm)			
				L (+-2.0mm)	L1 (+-0.6mm)	d1 (+-0.2mm)	d2 (+-0.3mm)
BL0.25	0.25mm <sup>2</sup> Violet Bootlace Ferrule	Violet	100	10.0	6.0	0.8	1.9
BL0.34	0.34mm <sup>2</sup> Pink Bootlace Ferrule	Pink	100	12.0	8.0	0.8	1.9
BL0.50	0.50mm <sup>2</sup> White Bootlace Ferrule	White	100	14.0	8.0	1.0	2.6
BL0.50/500	0.50mm <sup>2</sup> White Bootlace Ferrule	White	500	14.0	8.0	1.0	2.6



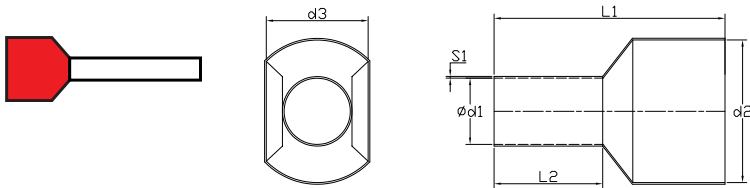
## NYLON INSULATED BOOTLACE FERRULES



PART NO.	Description	Colour	Pack Qty	Dimensions (mm)			
				L (+2.0mm)	L1 (+0.6mm)	d1 (+0.2mm)	d2 (+0.3mm)
BL0.75	0.75mm <sup>2</sup> Blue Bootlace Ferrule	Blue	100	14.0	8.0	1.2	2.8
BL0.75/500	0.75mm <sup>2</sup> Blue Bootlace Ferrule	Blue	500	14.0	8.0	1.2	2.8
BL1.0	1.0mm <sup>2</sup> Red Bootlace Ferrule	Red	100	14.0	8.0	1.4	3.0
BL1.0/500	1.0mm <sup>2</sup> Red Bootlace Ferrule	Red	500	14.0	8.0	1.4	3.0
BL1.0-12	1.0mm <sup>2</sup> Red Bootlace Ferrule	Red	100	18.0	12.0	1.4	3.0
BL1.0-12/500	1.0mm <sup>2</sup> Red Bootlace Ferrule	Red	500	18.0	12.0	1.4	3.0
BL1.5	1.5mm <sup>2</sup> Black Bootlace Ferrule	Black	100	14.0	8.0	1.7	3.5
BL1.5/500	1.5mm <sup>2</sup> Black Bootlace Ferrule	Black	500	14.0	8.0	1.7	3.5
BL1.5-12	1.5mm <sup>2</sup> Black Bootlace Ferrule	Black	100	18.0	12.0	1.7	3.5
BL1.5-18	1.5mm <sup>2</sup> Black Bootlace Ferrule	Black	100	24.0	18.0	1.7	3.5
BL2.5	2.5mm <sup>2</sup> Grey Bootlace Ferrule	Grey	100	14.0	8.0	2.2	4.2
BL2.5/500	2.5mm <sup>2</sup> Grey Bootlace Ferrule	Grey	500	14.0	8.0	2.2	4.2
BL2.5-12	2.5mm <sup>2</sup> Grey Bootlace Ferrule	Grey	100	18.0	12.0	2.2	4.2
BL2.5-12/500	2.5mm <sup>2</sup> Grey Bootlace Ferrule	Grey	500	18.0	12.0	2.2	4.2
BL2.5-18	2.5mm <sup>2</sup> Grey Bootlace Ferrule	Grey	100	24.0	18.0	2.2	4.2
BL2.5-18/500	2.5mm <sup>2</sup> Grey Bootlace Ferrule	Grey	500	24.0	18.0	2.2	4.2
BL4	4.0mm <sup>2</sup> Orange Bootlace Ferrule	Orange	100	17.0	10.0	2.8	4.8
BL4/500	4.0mm <sup>2</sup> Orange Bootlace Ferrule	Orange	500	17.0	10.0	2.8	4.8
BL4-12	4.0mm <sup>2</sup> Orange Bootlace Ferrule	Orange	100	20.0	12.0	2.8	4.8
BL4-18	4.0mm <sup>2</sup> Orange Bootlace Ferrule	Orange	100	26.0	18.0	2.8	4.8
BL6	6.0mm <sup>2</sup> Green Bootlace Ferrule	Green	50	20.0	12.0	3.5	6.3
BL6/500	6.0mm <sup>2</sup> Green Bootlace Ferrule	Green	500	20.0	12.0	3.5	6.3
BL6-18	6.0mm <sup>2</sup> Green Bootlace Ferrule	Green	50	26.0	18.0	3.5	6.3
BL10	10.0mm <sup>2</sup> Brown Bootlace Ferrule	Brown	50	22.0	12.0	4.5	7.6
BL10-18	10.0mm <sup>2</sup> Brown Bootlace Ferrule	Brown	50	28.0	18.0	4.5	7.6
BL16	16.0mm <sup>2</sup> Ivory Bootlace Ferrule	Ivory	50	24.0	12.0	5.8	8.8
BL16-18	16.0mm <sup>2</sup> Ivory Bootlace Ferrule	Ivory	50	28.0	18.0	5.8	8.8
BL25	25mm <sup>2</sup> Black Bootlace Ferrule	Black	10	30.0	16.0	7.3	11.2
BL25-22	25mm <sup>2</sup> Black Bootlace Ferrule	Black	10	36.0	22.0	7.3	11.2
BL35	35.0mm <sup>2</sup> Red Bootlace Ferrule	Red	10	30.0	16.0	8.3	12.7
BL50	50.0mm <sup>2</sup> Blue Bootlace Ferrule		10	36.0	20.0	10.3	15.0
BL70	70.0mm <sup>2</sup> Yellow Bootlace Ferrule	Yellow	5	37.0	21.0	13.5	16.0
BL95	95.0mm <sup>2</sup> Red Bootlace Ferrule	Red	5	44.0	25.0	14.7	18.0
BL120	120.0mm <sup>2</sup> Blue Bootlace Ferrule		5	48.0	27.0	16.7	20.0

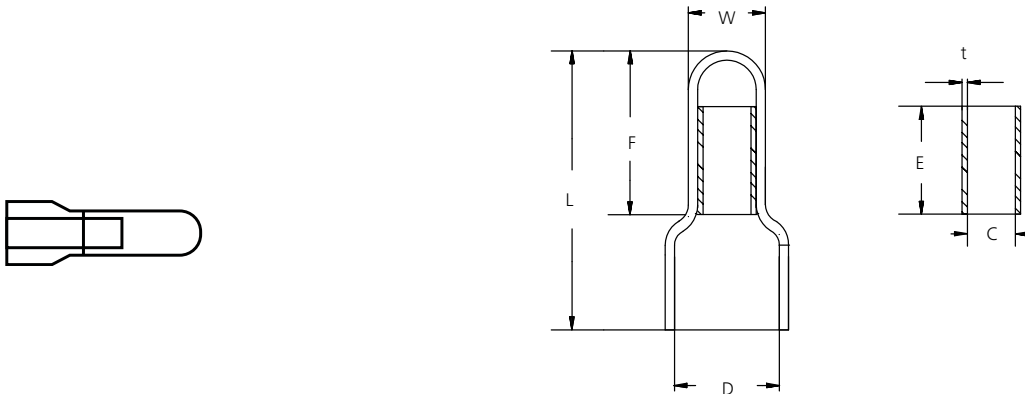


## NYLON INSULATED TWIN BOOTLACE FERRULES



PART NO.	Description	Colour	Pack Qty	Dimensions (mm)					
				d1 (+/-0.25mm)	d2 (+/-0.3mm)	d3 (+/-0.3mm)	L1 (+/-0.2mm)	L2 (+/-0.6mm)	S1 (+/-0.2mm)
<b>BLT0.50</b>	Twin 2 x 0.50mm <sup>2</sup> White Bootlace Ferrule	White	100	1.5	4.7	2.5	15.0	8.0	0.30
<b>BLT0.75</b>	Twin 2 x 0.75mm <sup>2</sup> Blue Bootlace Ferrule	Blue	100	1.8	5.0	2.8	15.0	8.0	0.30
<b>BLT1.0</b>	Twin 2 x 1.0mm <sup>2</sup> Red Bootlace Ferrule	Red	100	2.1	5.4	3.4	15.0	8.0	0.40
<b>BLT1.5</b>	Twin 2 x 1.5mm <sup>2</sup> Black Bootlace Ferrule	Black	100	2.2	6.6	3.6	16.0	8.0	0.40
<b>BLT2.5</b>	Twin 2 x 2.5mm <sup>2</sup> Grey Bootlace Ferrule	Grey	100	2.8	7.8	4.2	18.5	10.0	0.40
<b>BLT4</b>	Twin 2 x 4.0mm <sup>2</sup> Orange Bootlace Ferrule	Orange	50	3.7	8.8	4.9	23.0	12.0	0.45
<b>BLT6</b>	Twin 2 x 6.0mm <sup>2</sup> Green Bootlace Ferrule	Green	25	4.8	10.0	6.9	26.0	14.0	0.45

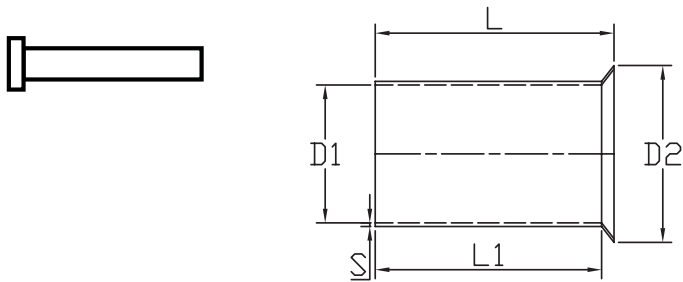
## CLOSED END CONNECTORS



PART NO.	Description	Pack Qty	Dimensions (mm)						
			W (+/-0.4mm)	L (+/-0.6mm)	F (+/-0.6mm)	D (+/-0.5mm)	E (+/-0.5mm)	t (+/-0.6mm)	E (+/-0.3mm)
<b>CE1</b>	Closed end connector 0.50 - 1.5mm <sup>2</sup>	50	4.6	17.9	11.5	6.2	6.5	0.40	2.60
<b>CE2</b>	Closed end connector 1.50 - 2.5mm <sup>2</sup>	50	5.2	19.9	13.2	7.9	7.0	0.33	3.30
<b>CE5</b>	Closed end connector 4.0 - 6.0mm <sup>2</sup>	25	7.0	25.5	15.7	10.5	7.3	0.60	4.30



### UN-INSULATED BOOTLACE FERRULES



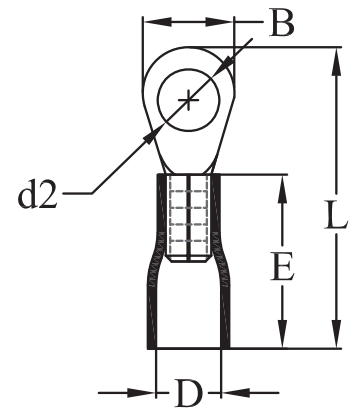
PART NO.	Description	Pack Qty	Dimensions (mm)				
			L (+0.6mm)	D1 (+0.25mm)	S (+0.1mm)	D2 (+0.1mm)	L2
<b>BLU0.50</b>	0.50mm <sup>2</sup> Un-insulated Bootlace Ferrule	100	8.0	1.0	0.15	1.9	7.3
<b>BLU0.75</b>	0.75mm <sup>2</sup> Un-insulated Bootlace Ferrule	100	8.0	1.2	0.15	2.2	7.3
<b>BLU1.0</b>	1.0mm <sup>2</sup> Un-insulated Bootlace Ferrule	100	8.0	1.4	0.15	2.4	7.3
<b>BLU1.5</b>	1.5mm <sup>2</sup> Un-insulated Bootlace Ferrule	100	8.0	1.7	0.15	2.8	7.0
<b>BLU2.5</b>	2.5mm <sup>2</sup> Un-insulated Bootlace Ferrule	100	8.0	2.3	0.15	3.4	7.0
<b>BLU4</b>	4.0mm <sup>2</sup> Un-insulated Bootlace Ferrule	100	10.0	2.8	0.20	4.0	9.0
<b>BLU6</b>	6.0mm <sup>2</sup> Un-insulated Bootlace Ferrule	50	10.0	3.5	0.20	4.7	9.0
<b>BLU10</b>	10.0mm <sup>2</sup> Un-insulated Bootlace Ferrule	50	12.0	4.5	0.20	5.8	10.8
<b>BLU16</b>	16.0mm <sup>2</sup> Un-insulated Bootlace Ferrule	50	15.0	5.8	0.20	7.5	13.5
<b>BLU25</b>	25mm <sup>2</sup> Un-insulated Bootlace Ferrule	10	18.0	7.3	0.20	9.5	16.0
<b>BLU35</b>	35.0mm <sup>2</sup> Un-insulated Bootlace Ferrule	10	18.0	8.3	0.20	10.5	16.0
<b>BLU50</b>	50.0mm <sup>2</sup> Un-insulated Bootlace Ferrule	10	20.0	10.3	0.30	13.0	17.0
<b>BLU70</b>	70.0mm <sup>2</sup> Un-insulated Bootlace Ferrule	5	25.0	13.5	0.40	15.5	22.0
<b>BLU95</b>	95.0mm <sup>2</sup> Un-insulated Bootlace Ferrule	5	25.0	14.7	0.40	17.0	22.0
<b>BLU120</b>	120.0mm <sup>2</sup> Un-insulated Bootlace Ferrule	5	30.0	16.7	0.45	19.0	27.0





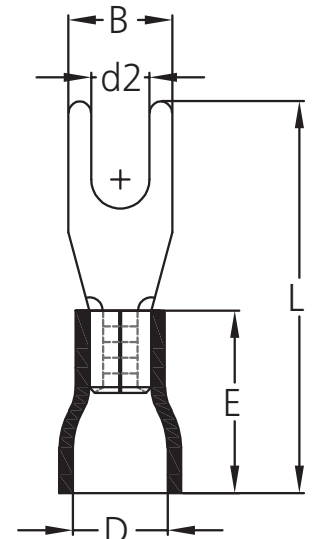
### SINGLE GRIP RING TERMINALS

MATERIAL: COPPER/PVC				Dimensions (mm)				
PART NO	Style	Colour	Pack Qty	d2	B	L	D	E
1R3		Red	100	3.20	5.50	17.00	4.30	10.00
1R4				4.30	8.00	21.20		
1R5				5.30	8.00	21.20		
1R6				6.40	11.60	27.10		
1R8				8.40	11.60	27.10		
1R10				10.50	13.70	31.00		
1R12				13.00	19.00	34.50		
2R3		Blue	100	3.20	8.50	22.50	4.70	10.70
2R4				4.30	8.50	22.50		
2R5				5.30	9.50	22.50		
2R6			50	6.40	12.00	27.60		
2R8				8.40	12.00	27.60		
2R10				10.50	13.70	31.40		
2R12				13.00	19.00	35.00		
3R3		Yellow	100	3.20	9.50	26.20	6.70	13.60
3R4				4.30	9.50	26.20		
3R5				5.30	9.50	26.20		
3R6			50	6.40	12.00	32.20		
3R8				8.40	15.00	34.40		
3R10				10.50	15.00	34.40		
3R12				13.00	19.20	39.10		



### SINGLE GRIP SPADE/FORKS

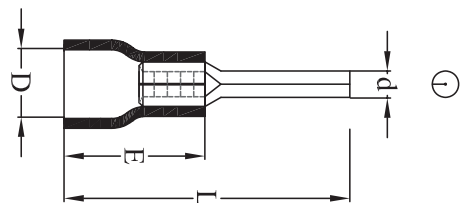
MATERIAL: COPPER/PVC				Dimensions (mm)				
PART NO	Style	Colour	Pack Qty	d2	B	L	D	E
1S3		Red	100	3.20	5.70	27.50	4.30	10.00
1S4A				4.30	6.30	21.50		
1S5A				5.30	8.00	21.50		
1S6A				6.40	9.30	22.50		
2S3		Blue	100	3.20	5.70	22.00	4.70	10.70
2S4A				4.30	6.30	22.00		
2S5A				5.30	8.00	22.00		
2S6				6.40	10.70	23.00		
3S4A		Yellow	50	4.30	8.20	26.20	6.70	13.60
3S5				5.30	9.00	26.20		
3S6A				6.40	9.00	30.20		





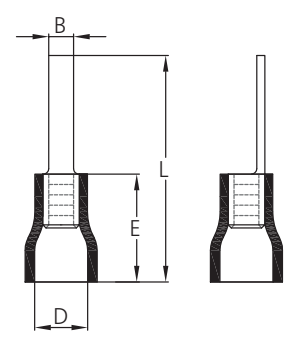
### SINGLE GRIP PIN CONNECTORS

MATERIAL: COPPER/PVC				Dimensions (mm)			
PART NO	Style	Colour	Pack Qty	d	L	D	E
1P10			100	2.00	19.00	4.30	10.00
2P10			100	2.00	19.50	4.70	10.70
3P13			25	2.70	27.00	6.70	13.60



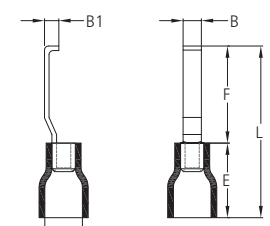
### SINGLE GRIP FLAT BLADES

MATERIAL: COPPER/PVC				Dimensions (mm)			
PART NO	Style	Colour	Pack Qty	B	L	D	E
1FB14			100	3.00	24.50	4.30	10.00
1FB18				2.45	28.00		
2FB13			100	2.80	19.50	4.70	10.60
2FB18				2.45	28.50		
3FB10			50	2.80	23.50	6.70	13.60
3FB14				4.50	31.60		



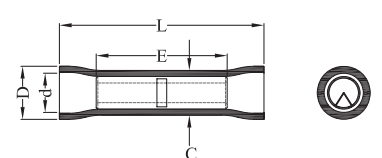
### SINGLE GRIP LIP BLADES

MATERIAL: COPPER/PVC				Dimensions (mm)					
PART NO	Style	Colour	Pack Qty	B	B1	L	D	E	F
1HB3			100	2.80	2.20	27.80	4.30	10.00	17.50
1HB5				4.60					
2HB3			100	2.80	2.20	28.30	4.70	10.70	17.50
2HB5				4.60					



### SINGLE GRIP CRIMP LINK

MATERIAL: COPPER/PVC				Dimensions (mm)				
PART NO	Style	Colour	Pack Qty	d	D	E	L	C
1UT			100	4.30	5.80	15.00	24.00	4.90
2UT			100	4.50	6.20	15.00	24.00	5.70
3UT			50	6.50	8.10	15.00	27.00	7.10





### Copper Cable Lug

#### Copper Lug Series

Copper cable lugs are used to terminate the ends of battery cable and welding cable so they can be connected to other electrical equipment such as starters, fuse blocks, distribution blocks, etc. Cable lugs are highly conductive and can handle very high currents. Our range of Copper Lugs/Links complies to Australian & New Zealand standard AS/NZS4325 Part 1:1995.

#### Features and Benefits

- Heat cycle certification available on request
- Wide range of sizes
- Can be crimped using cable lug crimper or hammer style crimper
- Easy insertion of cable



Copper Lug Series



Bell Mouth Copper Lug Series



Bell Mouth Circuit breaker lugs narrow palm Series



Long Barrel Short Palm Series



Long Barrel Long Palm Series



Bimetal Lug Series



Copper Links Series



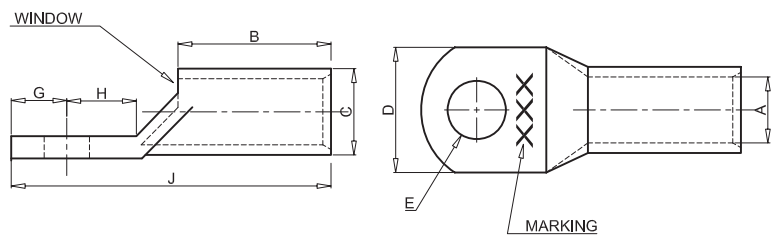
Copper Reducing Links Series



Bi-Metal Reducing Links

<b>MATERIAL</b>	Copper Grade C11000
<b>Conductive Material</b>	Copper 99.9% pure Oxygen content 30 p.p.m Max. Tensile strength 205 Mpa Min Ductile rating 40% Final metal state fully annealed Electroplating material tin 99.9% pure Other metals lead + antimony Thickness 5 -10 microns
<b>Conformant Standards</b>	AS/NZS4325 Part 1:1995
<b>General Electrical Properties</b>	Total conductivity 99.9% IACS Total resistivity: 1.72 micro-ohm cm
<b>Operating Temperature</b>	-55°C to 155°C due to oxygen-free copper

### COPPER LUGS



PART NO.	Conductor Size (mm <sup>2</sup> )	Stranding metric	Stud (E)	Barrel ID (A)	Barrel Length (B)	Barrel OD (C)	Palm Width (D)	Palm Thickness (F)	Palm Length (H+G)	Full Length (J)	A/F Hex	Pack Qty	Crimp Tool and Die Required
CL1.5-4	1.5	7/0.50	M4	1.8	7	3.7	8	1	9	18	N/A	100	HD16L- Indent Crimper
CL1.5-5			M5										
CL1.5-6			M6										

All dimensions in mm. Subject to technical changes.

Note: Copper Lug sizes above 95mm<sup>2</sup> are also available as singles. The same part number applies with a "-1" (Eg. CL95-8-1)

Note: Copper lugs above 240mm<sup>2</sup> do not have an inspection hole



COPPER LUGS



PART NO.	Conductor Size (mm <sup>2</sup> )	Stranding metric	Stud (E)	Barrel ID (A)	Barrel Length (B)	Barrel OD (C)	Palm Width (D)	Palm Thickness (F)	Palm Length (H+G)	Full Length (J)	A/F Hex	Pack Qty	Crimp Tool and Die Required
CL2.5-4	2.5	7/0.67	M4	2.4	7	4	8	1	9	18	N/A	100	HD16L- Indent Crimper
CL2.5-5			M5				10			20			
CL2.5-6			M6				11			21			
CL2.5-8			M8				15			24			
CL4-5	4	7/0.85	M5	3.1	9	4.8	10	1	11	22	N/A	100	HD16L- Indent Crimper
CL4-6			M6				11			23			
CL4-8			M8				13			25			
CL4-10			M10				15			27			
CL6-5	6	7/1.04	M5	3.8	9	5.5	10	1.2	11	23	4.4	100	HD16L - Indent Crimper HD0560AU - Hex Crimper HD06120AU - Hex Crimper
CL6-6			M6				12			27			
CL6-8			M8				15			30			
CL6-10			M10				20			32			
CL10-5	10	7/1.35	M5	4.7	10	7.1	12	1.8	14	27	5.7	100	HD16L - Indent Crimper HD0560AU - Hex Crimper HD06120AU - Hex Crimper
CL10-6			M6				13			28			
CL10-8			M8				16			31			
CL10-10			M10				19			34			
CL10-12			M12				23			37			
CL16-6	16	7/1.7	M6	5.5	19	7.9	11	2.3	14	37	6.3	50	HD16L - Indent Crimper HD0560AU - Hex Crimper HD06120AU - Hex Crimper HYCP400 - Hydraulic crimper with DIECU16
CL16-8			M8				14			39			
CL16-10			M10				16			41			
CL16-12			M12				18			46			
CL25-6	25	19/1.35	M6	7.1	21	9.5	14	2.4	16	41	7.7	50	HD16L - Indent Crimper HD0560AU - Hex Crimper HD06120AU - Hex Crimper HYCP400 - Hydraulic crimper with DIECU25
CL25-8			M8				14			41			
CL25-10			M10				16			44			
CL25-12			M12				18			48			
CL35-6	35	19/1.53	M6	8.2	21	11.5	16	3	18	44	9.2	50	HD16L - Indent Crimper HD0560AU - Hex Crimper HD06120AU - Hex Crimper HYCP400 - Hydraulic crimper with DIECU35
CL35-8			M8				17			45			
CL35-10			M10				18			46			
CL35-12			M12				20			50			
CL50-6	50	19/1.78	M6	9.5	22	12.8	18	3.2	20	48	10.4	50	HD16L - Indent Crimper HD0560AU - Hex Crimper HD06120AU - Hex Crimper HYCP400 - Hydraulic crimper with DIECU50
CL50-8			M8				19			49			
CL50-10			M10				21			51			
CL50-12			M12				21			52			
CL70-6	70	19/2.14	M6	11.2	11.5	14.6	21	3.3	24	54	11.5	25	HD16L - Indent Crimper HD0560AU - Hex Crimper HD06120AU - Hex Crimper HYCP400 - Hydraulic crimper with DIECU70
CL70-8			M8				22			55			
CL70-10			M10				23			56			
CL70-12			M12				24			57			
CL70-16			M16				28			64			

All dimensions in mm. Subject to technical changes.

Note: Copper Lug sizes above 95mm<sup>2</sup> are also available as singles. The same part number applies with a "-1" (Eg. CL95-8-1)

Note: Copper lugs above 240mm<sup>2</sup> do not have an inspection hole



## COPPER LUGS

PART NO.	Conductor Size (mm <sup>2</sup> )	Stranding metric	Stud (E)	Barrel ID (A)	Barrel Length (B)	Barrel OD (C)	Palm Width (D)	Palm Thickness (F)	Palm Length (H+G)	Full Length (J)	A/F Hex	Pack Qty	Crimp Tool and Die Required
CL95-8	95	19/2.45	M8	13.4	27	17.4	25	3.9	26	60	14.2	25	HD06120AU - Hex Crimper HYCP400 - Hydraulic crimper with DIECU95
CL95-10			M10										
CL95-12			M12										
CL95-16			M16				28	3.4	30	4			
CL120-8	120	37/2.03	M8	15.6	30	20.6	29	5	26	64	16.5	25	HD06120AU - Hex Crimper HYCP400 - Hydraulic crimper with DIECU120
CL120-10			M10										
CL120-12			M12										
CL120-16			M16				30	68					
CL150-8	150	37/2.25	M8	16.7	30	22.2	32	5.5	32	71	18.3	20	HYCP400 - Hydraulic crimper with DIECU150
CL150-10			M10						41	80			
CL150-12			M12										
CL150-16			M16										
CL185-10	185	37/2.52	M10	18.4	32	24.2	35	5.7	32	74	20	20	HYCP400 - Hydraulic crimper with DIECU185
CL185-12			M12						41	83			
CL185-16			M16										
CL240-10	240	61/2.25	M10	21.2	38	28.5	40	7.1	42	92	23.1	10	HYCP400 - Hydraulic crimper with DIECU240
CL240-12			M12										
CL240-16			M16										
CL300-10	300	61/2.25	M10	23.5	42	31.9	45	7.8	46	101	26	5	HYCP400 - Hydraulic crimper with DIECU300
CL300-12			M12		38		40	7.1	42	92			
CL300-16			M16		38								
CL400-12	400	61/2.85	M12	26.8	44	34.9	50	7.7	52	114	28.1	1	FH700FP - Hydraulic Foot Pump HP700A - Hydraulic Hand Pump HYCP630HE - Hydraulic Crimp head with CP630400D and ADP630HE
CL400-16			M16										
CL500-10	500	61/3.20	M10	30	48	38	56	85.5	56	124	31	1	FH700FP - Hydraulic Foot Pump HP700A - Hydraulic Hand Pump HYCP630HE - Hydraulic Crimp head with CP630500D and ADP630HE
CL500-12			M12							114			
CL630-12	630	127/2.52	M12	34	56	44	65	11	56	134	37	1	FH700FP - Hydraulic Foot Pump HP700A - Hydraulic Hand Pump HYCP630HE - Hydraulic Crimp head with CP630630D and ADP630HE
CL630-16			M16							114			

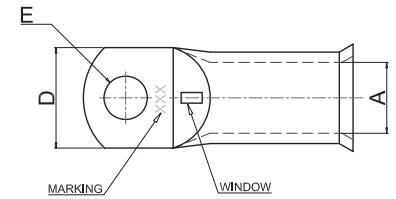
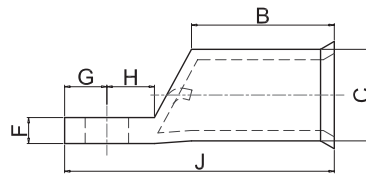
All dimensions in mm. Subject to technical changes.

Note: Copper Lug sizes above 95mm<sup>2</sup> are also available as singles. The same part number applies with a "-1" (Eg. CL95-8-1)

Note: Copper lugs above 240mm<sup>2</sup> do not have an inspection hole



BELL MOUTH COPPER LUGS



PART NO.	Conductor Size (mm <sup>2</sup> )	Stranding metric	Stud (E)	Barrel ID (A)	Barrel Length (B)	Barrel OD (C)	Palm Width (D)	Palm Thickness (F)	Palm Length (H+G)	Full Length (J)	A/F Hex	Pack Qty	Crimp Tool and Die Required
CL10-5BM	10	7/1.35	M5	4.7	10	7.1	12	1.8	14	27	5.7	100	HD16L - Indent Crimper HD0560AU - Hex Crimper HD06120AU - Hex Crimper
CL10-6BM			M6										
CL10-8BM			M8										
CL10-10BM			M10										
CL10-12BM			M12										
CL16-6BM	16	7/1.7	M6	5.5	19	7.9	11	2.3	14	37	6.3	50	HD16L - Indent Crimper HD0560AU - Hex Crimper HD06120AU - Hex Crimper HYCP400 - Hydraulic crimper with DIECU16
CL16-8BM			M8										
CL16-10BM			M10										
CL16-12BM			M12										
CL25-6BM	25	19/1.35	M6	7.1	21	9.5	14	2.4	16	41	7.7	50	HD16L - Indent Crimper HD0560AU - Hex Crimper HD06120AU - Hex Crimper HYCP400 - Hydraulic crimper with DIECU25
CL25-8BM			M8										
CL25-10BM			M10										
CL25-12BM			M12										
CL35-6BM	35	19/1.53	M6	8.2	21	11.5	16	3	18	44	9.2	50	HD16L - Indent Crimper HD0560AU - Hex Crimper HD06120AU - Hex Crimper HYCP400 - Hydraulic crimper with DIECU35
CL35-8BM			M8										
CL35-10BM			M10										
CL35-12BM			M12										
CL50-6BM	50	19/1.78	M6	9.5	22	12.8	18	3.2	20	48	10.4	50	HD16L - Indent Crimper HD0560AU - Hex Crimper HD06120AU - Hex Crimper HYCP400 - Hydraulic crimper with DIECU50
CL50-8BM			M8										
CL50-10BM			M10										
CL50-12BM			M12										
CL70-6BM	70	19/1.78	M6	11.2	11.5	14.6	21	3.3	24	54	11.5	25	HD16L - Indent Crimper HD0560AU - Hex Crimper HD06120AU - Hex Crimper HYCP400 - Hydraulic crimper with DIECU70
CL70-8BM			M8										
CL70-10BM			M10										
CL70-12BM			M12										
CL70-16BM			M16										
CL95-8BM	95	37/1.78	M8	13.4	27	17.4	25	3.9	26	60	14.2	25	HD06120AU - Hex Crimper HYCP400 - Hydraulic crimper with DIECU95
CL95-10BM			M10										
CL95-12BM			M12										
CL95-16BM			M16										

All dimensions in mm. Subject to technical changes.

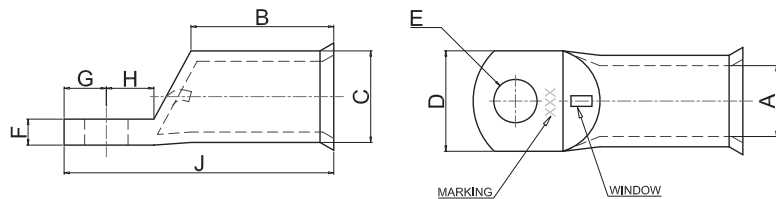
Note: Bell mouth Copper Lug sizes above 95mm<sup>2</sup> are also available as singles. The same part number applies with a "-1" (Eg. CL95-8BM-1)

Note: Bell Mouth Copper lugs above 240mm<sup>2</sup> do not have an inspection hole

Note: Funnel entry design to suite flexible cables



## BELL MOUTH COPPER LUGS



PART NO.	Conductor Size (mm <sup>2</sup> )	Stranding metric	Stud (E)	Barrel ID (A)	Barrel Length (B)	Barrel OD (C)	Palm Width (D)	Palm Thickness (F)	Palm Length (H+G)	Full Length (J)	A/F Hex	Pack Qty	Crimp Tool and Die Required
CL120-8BM	120	37/2.03	M8	15.6	30	20.6	29	5	26	64	16.5	25	HD06120AU - Hex Crimper HYCP400 - Hydraulic crimper with DIECU120
CL120-10BM			M10										
CL120-12BM			M12										
CL120-16BM			M16										
CL150-10BM	150	37/2.25	M10	16.7	30	22.2	32	5.5	32	71	18.3	20	HYCP400 - Hydraulic crimper with DIECU150
CL150-12BM			M12						41	80			
CL150-16BM			M16										
CL185-10BM	185	37/2.52	M10	18.4	32	24.2	35	5.7	32	74	20	20	HYCP400 - Hydraulic crimper with DIECU185
CL185-12BM			M12				35	5.7	41	83			
CL185-16BM			M16										
CL240-10BM	240	61/2.25	M10	21.2	38	28.5	40	7.1	42	92	23.1	10	HYCP400 - Hydraulic crimper with DIECU240
CL240-12BM			M12										
CL240-16BM			M16										
CL300-10BM	300	61/2.25	M10	23.5	42	31.9	45	7.8	46	101	26	5	HYCP400 - Hydraulic crimper with DIECU300
CL300-12BM			M12		38		40	7.1	42	92			
CL300-16BM			M16										
CL400-12BM	400	61/2.85	M12	26.8	44	34.9	50	7.7	52	114	28.1	1	FH700FP - Hydraulic Foot Pump HP700A - Hydraulic Hand Pump HYCP630HE - Hydraulic Crimp head with CP630400D and ADP630HE
CL400-16BM			M16				50						
CL500-12BM	500	61/3.20	M12	30	48	38	56	8.5	56	114	31	1	FH700FP - Hydraulic Foot Pump HP700A - Hydraulic Hand Pump HYCP630HE - Hydraulic Crimp head with CP630500D and ADP630HE
CL630-12BM	630	127.2.52	M12	34	56	44	65	11	56	134	37	1	FH700FP - Hydraulic Foot Pump HP700A - Hydraulic Hand Pump HYCP630HE - Hydraulic Crimp head with CP630630D and ADP630HE

All dimensions in mm. Subject to technical changes.

Note: Bell mouth Copper Lug sizes above 95mm<sup>2</sup> are also available as singles. The same part number applies with a "-1" (Eg. CL95-8BM-1)

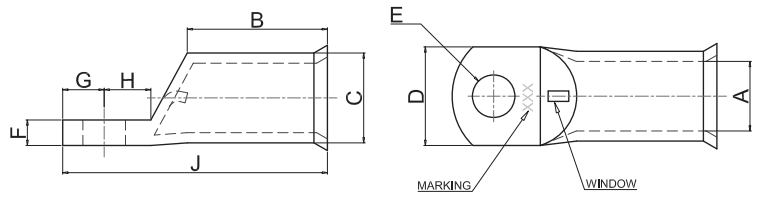
Note: Bell Mouth Copper lugs above 240mm<sup>2</sup> do not have an inspection hole

Note: Funnel entry design to suite flexible cables





**BELL MOUTH CIRCUIT BREAKER  
LUGS NARROW PALM**



PART NO.	Conductor Size (mm <sup>2</sup> )	Stranding metric	Stud (E)	Barrel ID (A)	Barrel Length (B)	Barrel OD (C)	Palm Width (D)	Palm Thickness (F)	Palm Length (H+G)	Full Length (J)	A/F Hex	Pack Qty	Crimp Tool and Die Required
CLB35-6-1	35	19/1.53	M6	8.2	21	11.5	15	3	15	41	9.2	1	HD16L - Indent Crimper HD0560AU - Hex Crimper HD06120AU - Hex Crimper HYCP400 - Hydraulic crimper with DIECU35
CLB50-6-1	50	19/1.78	M6	9.5	22	12.8	15	3.2	21	43	10.4	1	HD16L - Indent Crimper HD0560AU - Hex Crimper HD06120AU - Hex Crimper
CLB50-10-1			M10				19	2.9					
CLB70-6-1	70	19/2.14	M6	11.3	24	14.6	17	3.3	15	4.5	11.5	1	HD16L - Indent Crimper HD0560AU - Hex Crimper HD06120AU - Hex Crimper
CLB70-8-1			M8										
CLB70-10-1			M10							19			
CLB95-8-1	95	37/1.78	M8	13.5	27	17.4	19	3.9	17	51	14.2	1	HD06120AU - Hex Crimper HYCP400 - Hydraulic crimper with DIECU95
CLB95-10-1			M10						21	55			
CLB120-8-1	120	37/2.03	M8	15.6	30	20.6	19	5	23	61	16.5	1	HD06120AU - Hex Crimper HYCP400 - Hydraulic crimper with DIECU120
CLB120-10-1			M10										
CLB150-8-1	150	37/2.25	M8	16.7	30	22.2	19	5.5	27	66	18.3	1	HYCP400 - Hydraulic crimper with DIECU150
CLB150-10-1			M10										
CLB185-10-1	185	37/2.52	M10	18.4	32	22.2	24.5	5.8	32	74	20	1	HYCP400 - Hydraulic crimper with DIECU185
CLB185-12-1			M12										
CLB240-10-1	240	61/2.25	M10	21.2	38	28.5	31	7.1	32	82	23.1	1	HYCP400 - Hydraulic crimper with DIECU240
CLB240-12-1			M12										
CLB300-10-1	300	61/2.25	M10	23.5	42	31.9	31	7.8	32	87	26	1	HYCP400 - Hydraulic crimper with DIECU300
CLB300-12-1			M12										

All dimensions in mm. Subject to technical changes.

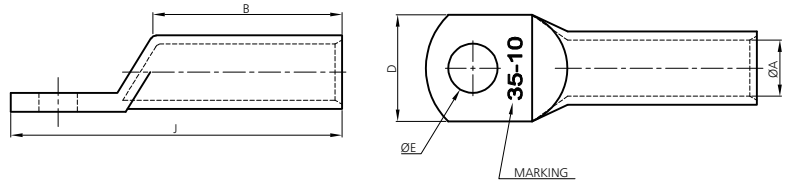
Note: All Circuit breaker lugs are sold as singles.

Note: Funnel entry design to suite flexible cables





#### LONG BARREL SHORT PALM



PART NO.	Conductor Size (mm <sup>2</sup> )	Stranding metric	Stud (E)	Barrel ID (A)	Barrel Length (B)	Palm Width (D)	Palm Thickness (F)	Palm Length (H+G)	Full Length (J)	A/F Hex	Pack Qty	Crimp Tool and Die Required
CL16-6LB	16	7/1.7	M6	5.5	35	11	2.3	20	60	6.3	1	HD16L - Indent Crimper HD0560AU - Hex Crimper HD06120AU - Hex Crimper HYCP400 - Hydraulic crimper with DIECU16
CL16-8LB			M8			14	1.7					
CL25-8LB	25	19/1.35	M8	7.1	35	14	2.4	22	62	7.7	1	HD16L - Indent Crimper HD0560AU - Hex Crimper HD06120AU - Hex Crimper HYCP400 - Hydraulic crimper with DIECU25
CL35-10LB	35	19/1.53	M10	8.2	35	18	2.6	25	65	9.2	1	HD16L - Indent Crimper HD0560AU - Hex Crimper HD06120AU - Hex Crimper HYCP400 - Hydraulic crimper with DIECU35
CL35-12LB			M12			20	2.3					
CL50-10LB	50	19/1.78	M10	9.5	44	18	3.2	27	77	10.4	1	HD16L - Indent Crimper HD0560AU - Hex Crimper HD06120AU - Hex Crimper HYCP400 - Hydraulic crimper with DIECU50
CL70-10LB	70	19/2.14	M10	11.2	48	21	3.3	27	81	11.5	1	HD16L - Indent Crimper HD0560AU - Hex Crimper HD06120AU - Hex Crimper HYCP400 - Hydraulic crimper with DIECU70
CL70-12LB			M12									
CL95-10LB	95	37/1.78	M10	??	54	25	3.9	27	88	??	1	HD06120AU - Hex Crimper HYCP400 - Hydraulic crimper with DIECU95
CL95-12LB			M12									
CL120-10LB	120	37/2.03	M10	15.6	60	29	5	30	98	16.5	1	HD06120AU - Hex Crimper HYCP400 - Hydraulic crimper with DIECU120
CL120-12LB			M12									
CL150-12LB	150	37/2.25	M12	16.7	60	32	5.5	41	110	18.3	1	HYCP400 - Hydraulic crimper with DIECU150
CL185-12LB	185	37/2.52	M12	18.4	64	32	5.5	41	115	20	1	HYCP400 - Hydraulic crimper with DIECU185
CL240-12LB	240	61/2.25	M12	21.2	80	40	7.1	50	142	23.1	1	HYCP400 - Hydraulic crimper with DIECU240

All dimensions in mm. Subject to technical changes.

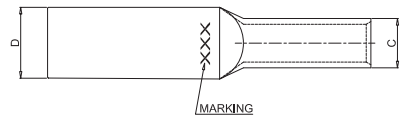
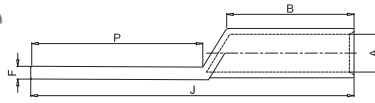
Note: All Long Barrel Short Palm lugs are sold as singles.

Note: No inspection hole on any size of the Long barrel short Palm.

Note: Solder Sealed for Outdoor Use.



**LONG BARREL LONG PALM BLANK**



PART NO.	Conductor Size (mm <sup>2</sup> )	Stranding metric	Stud	Barrel ID (A)	Barrel Length (B)	Barrel OD (C)	Palm Width (D)	Palm Thickness (F)	Palm Length (P)	Full Length (A)	A/F Hex	Pack Qty	Crimp Tool and Die Required
<b>CL16LPB</b>	16	7/1.7	Blank	5.5	21	7.9	16	1.5	61	86	6.3	1	HD16L - Indent Crimper HD0560AU - Hex Crimper HD06120AU - Hex Crimper HYCP400 - Hydraulic crimper with DIECU16
<b>CL25LPB</b>	25	19/1.35	Blank	7.1	29	9.5	16	1.9	61	95	7.7	1	HD16L - Indent Crimper HD0560AU - Hex Crimper HD06120AU - Hex Crimper HYCP400 - Hydraulic crimper with DIECU25
<b>CL35LPB</b>	35	19/1.53	Blank	8.2	35	11.5	18	2.6	72	112	9.2	1	HD16L - Indent Crimper HD0560AU - Hex Crimper HD06120AU - Hex Crimper HYCP400 - Hydraulic crimper with DIECU35
<b>CL50LPB</b>	50	19/1.78	Blank	9.5	44	12.8	18	3.3	80	130	10.4	1	HD16L - Indent Crimper HD0560AU - Hex Crimper HD06120AU - Hex Crimper HYCP400 - Hydraulic crimper with DIECU50
<b>CL70LPB</b>	70	19/2.14	Blank	11.2	48	14.6	21	3.5	100	154	11.5	1	HD16L - Indent Crimper HD0560AU - Hex Crimper HD06120AU - Hex Crimper HYCP400 - Hydraulic crimper with DIECU70
<b>CL95LPB</b>	95	37/1.78	Blank	13.4	54	17.4	25	3.9	100	161	14.2	1	HD06120AU - Hex Crimper HYCP400 - Hydraulic crimper with DIECU95
<b>CL120LPB</b>	120	37/2.03	Blank	15.6	60	20.6	28	5	100	168	16.5	1	HD06120AU - Hex Crimper HYCP400 - Hydraulic crimper with DIECU120
<b>CL150LPB</b>	150	37/2.25	Blank	16.7	60	22.2	32	5.8	100	169	18.3	1	HYCP400 - Hydraulic crimper with DIECU150
<b>CL185LPB</b>	185	37/2.52	Blank	18.4	64	24.2	35	5.8	100	174	20	1	HYCP400 - Hydraulic crimper with DIECU185
<b>CL240LPB</b>	240	61/2.25	Blank	21.2	80	28.5	40	7.1	100	192	23.1	1	HYCP400 - Hydraulic crimper with DIECU240
<b>CL300LPB</b>	300	61/2.25	Blank	23.5	90	31.9	45	7.8	105	208	26	1	HYCP400 - Hydraulic crimper with DIECU300
<b>CL400LPB</b>	400	61/2.85	Blank	26.8	100	34.9	50	7.7	110	228	28.1	1	HYCP400 - Hydraulic crimper with DIECU400
<b>CL500LPB</b>	500	61/3.20	Blank	30	105	38	56	8.5	110	235	31	1	HYCP400 - Hydraulic crimper with DIECU500
<b>CL630LPB</b>	630	127/2.52	Blank	34	115	44	65	10.9	110	247	37	1	HYCP400 - Hydraulic crimper with DIECU630

All dimensions in mm. Subject to technical changes.

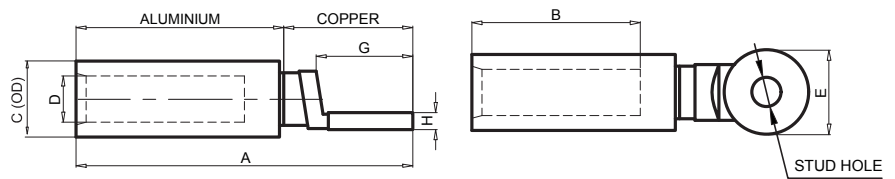
**Note: All Long Barrel Long Palm lugs are sold as singles.**

**Note: No inspection hole on any size of the Long barrel Long Palm.**

**Note: Solder Sealed for Outdoor Use.**



## BI-METAL LUGS



HTAU PART NO.	Conductor Size (mm <sup>2</sup> )	Stud E	Full Length (A)	Barrel Insert Length (B)	Barrel OD (C)	Barrel ID (D)	Palm Width (E)	Palm Length (G)	Palm Thickness (H)	A/F Hex	Pack Qty	Crimp Tool and Die Required
BML16-10	16	M10	75	32	12	5.5	20	24	4.5	9	1	HYCP400 - Hydraulic crimper with ALDIE6-35
BML25-10	25	M10	75	32	12	7.5	20	24	4.5	9	1	HYCP400 - Hydraulic crimper with ALDIE6-35
BML25-12		M12										
BML35-10	35	M10	75	32	12	8.5	20	24	4.5	9	1	HYCP400 - Hydraulic crimper with ALDIE6-35
BML35-12		M12										
BML50-10	50	M10	75	32	16	9.5	24	26	4.5	13.2	1	HYCP400 - Hydraulic crimper with ALDIE50-70
BML50-12		M12										
BML70-10	70	M10	75	32	16	9.5	24	26	4.5	13.2	1	HYCP400 - Hydraulic crimper with ALDIE50-70
BML70-12		M12										
BML95-10	95	M10	115	60	21.5	13.5	24	26	6	17.3	1	HYCP400 - Hydraulic crimper with ALDIE95-120
BML95-12		M12										
BML120-10	120	M10	115	60	21.5	15.5	30	33	6	17.3	1	HYCP400 - Hydraulic crimper with ALDIE95-120
BML120-12		M12										
BML150-10	150	M10	120	60	21.5	16.5	30	33	6	22	1	HYCP400 - Hydraulic crimper with ALDIE150-185
BML150-12		M12										
BML185-10	185	M10	120	60	27	18.5	35	38	7	22	1	HYCP400 - Hydraulic crimper with ALDIE150-185
BML185-12		M12										
BML240-10	240	M10	135	60	35	22	35	38	7	28.4	1	HYCP400 - Hydraulic crimper with ALDIE240-300
BML240-12		M12										
BML300-10	300	M10	135	60	35	23.5	36	38	7	28.4	1	HYCP400 - Hydraulic crimper with ALDIE240-300
BML300-12		M12										
BML400	400	Blank	160	70	47	26.5	50	58	10	39	1	—
BML500	500	Blank	160	70	47	30	50	58	10	39	1	—
BML630	630	Blank	175	70	54	34	60	68	10	43.2	1	—

All dimensions in mm. Subject to technical changes.

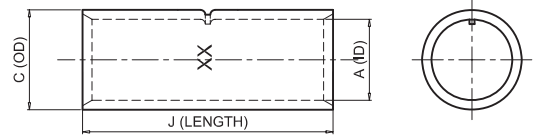
Note: All Bi-Metal lugs are sold as singles.

Note: Funnel entry design to suit flexible cables

Note: Funnel entry of 30 degrees available from Dec 2022



COPPER LINKS



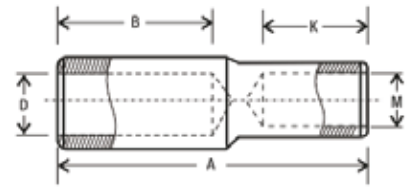
PART NO.	Conductor Size (mm <sup>2</sup> )	Stranding Metric	Barrel ID (A)	Barrel OD (C)	Full Length (J)	A/F Hex	Pack Qty	Crimp Tool and Die Required
CS1.5	1.5	7/0.50	1.8	3.7	22	N/A	100	HD16L- Indent Crimper
CS2.5	2.5	7/0.67	2.4	4	22	N/A	100	HD16L- Indent Crimper
CS4	4	7/0.85	3.1	4.8	22	N/A	100	HD16L- Indent Crimper
CS6	6	7/1.04	3.8	5.5	22	4.4	100	HD16L- Indent Crimper
CS10	10	7/1.35	4.7	7.1	27	5.7	100	HD16L- Indent Crimper
CS16	16	7/1.70	5.5	7.9	44	6.3	50	HD16L - Indent Crimper HD0560AU - Hex Crimper HD06120AU - Hex Crimper HYCP400 - Hydraulic crimper with DIECU16
CS25	25	19/1.35	7.1	9.5	47	7.7	50	HD16L - Indent Crimper HD0560AU - Hex Crimper HD06120AU - Hex Crimper HYCP400 - Hydraulic crimper with DIECU25
CS35	35	19/1.53	8.2	11.5	47	9.2	50	HD16L - Indent Crimper HD0560AU - Hex Crimper HD06120AU - Hex Crimper HYCP400 - Hydraulic crimper with DIECU35
CS50	50	19/1.78	9.5	12.8	47	10.4	50	HD16L - Indent Crimper HD0560AU - Hex Crimper HD06120AU - Hex Crimper HYCP400 - Hydraulic crimper with DIECU50
CS70	70	19/2.14	11.2	14.6	50	11.5	25	HD16L - Indent Crimper HD0560AU - Hex Crimper HD06120AU - Hex Crimper HYCP400 - Hydraulic crimper with DIECU70
CS95	95	37/1.78	13.4	17.4	54	14.2	25	HD06120AU - Hex Crimper HYCP400 - Hydraulic crimper with DIECU95
CS120	120	37/2.03	15.6	20.6	65	16.5	25	HD06120AU - Hex Crimper HYCP400 - Hydraulic crimper with DIECU120
CS150	150	37/2.25	16.7	22.2	65	18.3	20	HYCP400 - Hydraulic crimper with DIECU150
CS185	185	37/2.52	18.4	24.2	65	20	20	HYCP400 - Hydraulic crimper with DIECU185
CS240	240	61/2.25	21.2	28.5	90	23.1	10	HYCP400 - Hydraulic crimper with DIECU240
CS300	300	61/2.25	23.5	31.9	90	26	5	HYCP400 - Hydraulic crimper with DIECU300
CS400	400	61/2.85	26.8	34.9	90	28.1	1	FH700FP - Hydraulic Foot Pump HP700A - Hydraulic Hand Pump HYCP630HE - Hydraulic Crimp head with CP630400D and ADP630HE
CS500	500	61/3.20	30	38	112	31	1	FH700FP - Hydraulic Foot Pump HP700A - Hydraulic Hand Pump HYCP630HE - Hydraulic Crimp head with CP630500D and ADP630HE
CL630	630	127/2.52	34	44	112	37	1	FH700FP - Hydraulic Foot Pump HP700A - Hydraulic Hand Pump HYCP630HE - Hydraulic Crimp head with CP630630D and ADP630HE

All dimensions in mm. Subject to technical changes.

Note: Copper Link sizes above 95mm<sup>2</sup> are also available as singles. The same part number applies with a "-1" (Eg. CS95-1)



## REDUCING COPPER LINKS



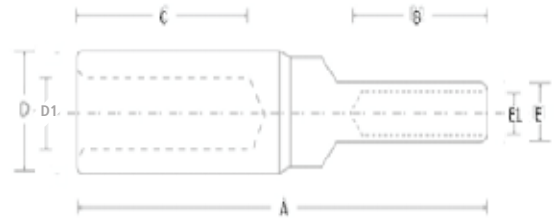
PART NO	Conductor range sizes mm <sup>2</sup>	Full Length (A)	Barrel length (B)	Barrel ID (D)	Barrel Length (K)	Barrel ID (m)	Pack Qty	Crimp Tool and Die Required	
CRL16-6	16 to 6	40	19	5.5	10	4.0	1	HD16L - Indent Crimper HD0560AU - Hex Crimper HD06120AU - Hex Crimper HYCP400 - Hydraulic crimper with DIECU16	
CRL16-10	16 to 10								
CRL25-10	25 to 10	40	21	7.5	10	4.0	1	HD16L - Indent Crimper HD0560AU - Hex Crimper HD06120AU - Hex Crimper HYCP400 - Hydraulic crimper with DIECU16 and DIECU25	
CRL25-16	25 to 16	50			19				5.5
CRL35-10	35 to 10	40	21	8.5	10	4.5	1	HD16L - Indent Crimper HD0560AU - Hex Crimper HD06120AU - Hex Crimper HYCP400 - Hydraulic crimper with DIECU16 and DIECU25 and DIECU35	
CRL35-16	35 to 16	55			19				5.5
CRL35-25	35 to 25	60			21				7.5
CRL50-16	50 to 16	55	22	9.5	19	5.5	1	HD16L - Indent Crimper HD0560AU - Hex Crimper HD06120AU - Hex Crimper HYCP400 - Hydraulic crimper with DIECU16 and DIECU25 and DIECU35 and DIECU50	
CRL50-25	50 to 25	55			21				7.5
CRL50-35	50 to 35	60							8.5
CRL70-35	70 to 35	65	24	11.5	21	8.5	1	HD0560AU - Hex Crimper HD06120AU - Hex Crimper HYCP400 - Hydraulic crimper with DIECU35 and DIECU50 and DIECU70	
CRL70-50	70 to 50	65			22				9.5
CRL95-16	95 to 16	65	27	13.5	19	5.5	1	HD0560AU - Hex Crimper HD06120AU - Hex Crimper HYCP400 - Hydraulic crimper with DIECU16 and DIECU25 DIECU35 and DIECU50 and DIECU70 and DIECU95	
CRL95-25	95 to 25	65			21				7.5
CRL95-35	95 to 35	65			21				8.5
CRL95-50	95 to 50	70			22				9.6
CRL95-70	95 to 70	70			24				11.5
CRL120-35	120 to 35	70	30	15.5	21	8.5	1	HD0560AU - Hex Crimper HD06120AU - Hex Crimper HYCP400 - Hydraulic crimper with DIECU35 and DIECU50 DIECU70 and DIECU95 and DIECU120	
CRL120-50	120 to 50	70			22				9.5
CRL120-70	120 to 70	75			24				11.5
CRL120-95	120 to 95	75			27				13.5
CRL150-70	150 to 70	75	30	16.5	24	11.5	1	HD06120AU - Hex Crimper HYCP400 - Hydraulic crimper with DIECU70 and DIECU95 DIECU120 and DIECU150	
CRL150-95	150 to 95	80			27				13.5
CRL150-120	150 to 120	80			30				15.5
CRL185-95	185 to 95	80	32	18.5	27	13.5	1	HD06120AU - Hex Crimper HYCP400 - Hydraulic crimper with DIECU95 DIECU120 and DIECU150 and DIECU185	
CRL185-120	185 to 120	85			30				15.5
CRL185-150	185 to 150	85							16.5
CRL240-95	240 to 95	85	38	21.5	27	13.5	1	HD06120AU - Hex Crimper HYCP400 - Hydraulic crimper with DIECU95 DIECU120 and DIECU150 and DIECU185 and DIECU240	
CRL240-120	240 to 120	90			30				15.5
CRL240-150	240 to 150	90							16.5
CRL240-185	240 to 185	95			32				18.5
CRL300-185	300 to 185	100	42	23.5	32	18.5	1	HYCP400 - Hydraulic crimper with DIECU185 DIECU240 and DIECU300	
CRL300-240	300 to 240	105			38				21.5

All dimensions in mm. Subject to technical changes.

Note: Copper reducing links are sold as singles.



## REDUCING BI-METAL LINKS



PART NO.	Conductor range Al to Cu sizes mm <sup>2</sup>	Full Length (A)	Aluminium				Copper				Pack Qty	Crimp Tool and Die Required
			Barrel length (C)	Barrel OD (D)	Barrel ID (D1)	A/F HEX (mm)	Barrel length (B)	Barrel OD (E)	Barrel ID (E1)	A/F HEX (mm)		
BMK16-10	16 to 10	61	28	12	6	9.9	23	7.1	4.7	5.6	1	HYCP400 - Hydraulic crimper with ALDIE6-35
BMK25-6	25 to 6	61	28	12	6.8	9.9	23	5.5	3.8	4.3	1	HYCP400 - Hydraulic crimper with ALDIE6-35
BMK25-16	25 to 16							8	5.5	6.3		
BMK35-6	35 to 6	71	33	14	8	9.9	25	5.5	3.8	4.3	1	HYCP400 - Hydraulic crimper with ALDIE6-35
BMK35-10	35 to 10							7.1	4.7	5.6		
BMK35-16	35 to 16							8	5.5	6.3		
BMK35-25	35 to 25							9.5	7.1	7.7		
BMK50-16	50 to 16	95	43	16	9.5	13.2	33	8.0	5.5	6.3	1	HYCP400 - Hydraulic crimper with ALDIE6-35 and ALDIE50-70
BMK50-25	50 to 25							9.5	7.1	7.7		
BMK70-16	70 to 16	110	50	16	11.5	13.2	33	8.0	5.5	6.3	1	HYCP400 - Hydraulic crimper with ALDIE6-35 and ALDIE50-70
BMK70-25	70 to 25							9.5	7.1	7.7		
BMK70-35	70 to 35							11.5	8.2	9.2		
BMK70-50	70 to 50							12.8	9.5	10.4		
BMK95-16	95 to 16	110	50	21.5	13.5	17.3	30	8.0	5.5	6.3	1	HYCP400 - Hydraulic crimper with ALDIE6-35 and ALDIE50-70 ALDIE95-120
BMK95-25	95 to 25							9.5	7.1	7.7		
BMK95-35	95 to 35						35	9.5	8.2	9.2		
BMK95-50	95 to 50							12	9.5	10.4		
BMK95-70	95 to 70							14.7	11.2	11.5		
BMK120-16	120 to 16	110	50	21.5	15.5	17.3	30	8.0	5.5	6.3	1	HYCP400 - Hydraulic crimper with ALDIE6-35 and ALDIE50-70
BMK120-25	120 to 25							9.5	7.1	7.7		
BMK120-35	120 to 35						35	11.5	8.2	9.2		
BMK120-50	120 to 50							12.8	9.5	10.4		
BMK120-70	120 to 70							14.7	11.2	11.5		
BMK120-95	120 to 95							17.4	13.4	14.2		
BMK150-25	150 to 25	120	60	27	16.5	22.0	33	9.5	7.1	7.7	1	HYCP400 - Hydraulic crimper with ALDIE6-35 and ALDIE50-70 ALDIE95-120 and ALDIE150-185
BMK150-35	150 to 35						35	11.5	8.2	9.2		
BMK150-50	150 to 50							12.8	9.5	10.4		
BMK150-70	150 to 70							14.7	11.2	11.5		
BMK150-95	150 to 95							17.4	13.4	14.2		
BMK150-120	150 to 120							20.0	15.6	16.5		

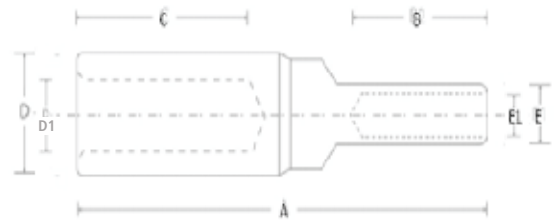
All dimensions in mm. Subject to technical changes.

Note: Reducing Bi-Metal links are sold as singles.





## REDUCING BI-METAL LINKS



## REDUCING BI-METAL LINKS

PART NO.	Conductor range Al to Cu sizes mm <sup>2</sup>	Full Length (A)	Aluminium				Copper				Pack Qty	Crimp Tool and Die Required						
			Barrel length (C)	Barrel OD (D)	Barrel ID (D1)	A/F HEX (mm)	Barrel length (B)	Barrel OD (E)	Barrel ID (E1)	A/F HEX (mm)								
BMK185-16	185 to 16	120	60	27	18.5	22.0	33	8.0	5.5	6.3	1	HYCP400 - Hydraulic crimper with ALDIE6-35 and ALDIE50-70 ALDIE95-120 and ALDIE150-185						
BMK185-25	185 to 25							9.5	7.1	7.7								
BMK185-35	185 to 35						35	11.5	8.2	9.2								
BMK185-50	185 to 50							12.8	9.5	10.4								
BMK185-70	185 to 70							14.7	11.2	11.5								
BMK185-95	185 to 95							17.4	13.4	14.2								
BMK185-120	185 to 120							40	20.0	15.6			16.5					
BMK240-16	240 to 16	130	60	35	22	22.0	33	8.0	5.5	6.3	1	HYCP400 - Hydraulic crimper with ALDIE6-35 and ALDIE50-70 ALDIE95-120 and ALDIE150-185 and ALDIE240-300						
BMK240-25	240 to 25							9.5	7.1	7.7								
BMK240-35	240 to 35						35	11.5	8.2	9.2								
BMK240-50	240 to 50							12.8	9.5	10.4								
BMK240-70	240 to 70							14.7	11.2	11.5								
BMK240-95	240 to 95					17.4	13.4	14.2	28.4	40			20.0	15.6	16.5			
BMK240-120	240 to 120					22.5	16.7	18.3										
BMK240-150	240 to 150					24.2	18.4	20.0										
BMK240-185	240 to 185																	
BMK300-95	300 to 95					130	60	35	23.5	28.4			40	17.4	13.4	14.2	1	HYCP400 - Hydraulic crimper with ALDIE6-35 and ALDIE50-70 ALDIE95-120 and ALDIE150-185 and ALDIE240-300
BMK300-185	300 to 185	24.2	18.4	20														
BMK300-240	300 to 240	27.8	21.2	23.1														
BMK400-185	400 to 185	130	60	40	26	28.4	40	24.2	18.4	20.0	1	HYCP400 - Hydraulic crimper with ALDIE6-35 and ALDIE50-70 ALDIE95-120 and ALDIE150-185 and ALDIE240-300						
BMK400-240	400 to 240					28.4		27.8	21.2	23.1								
BMK400-300	400 to 300					33		32	23.8	25.2								
BMK500-400	500 to 400	150	70	44	29	36.3	50	35.0	27.0	27.6	1	N/A						

All dimensions in mm. Subject to technical changes.

**Note:** Reducing Bi-Metal links are sold as singles.



## Tools

### Rack-a-Tier Dispensing Tool

This multi-purpose premium wire dispensing tool is lightweight and durable. It accommodates a wide range of cable sizes with loads up to 150kg. The one tool that does all: wire dispenser, pipe vise, saw horse, work bench, wall shelf or even a table.

#### Features and Benefits

- Lightweight
- Durable one piece construction
- Waterproof and easy to clean
- Made of recycled material
- Easy to store and transport



Rack-a-Tier.

PART NO.	Description	Pack Qty.
RCT1	Rack-a-Tier Wire Dispenser	1
RCT1-Pipe	Rack-a-Tier Pipe	1
RCT1-w/pipe	Rack-a-Tier Wire Dispenser with galvanised pipe kit	1



Rack-a-Tier application



## RELICON - Innovative Cast Resin and Gel Technology

For Reliable Cable Connections

We believe in our products. The promise they deliver is anchored in our brand name: RELICON stands for "reliable connection". You can trust RELICON to make reliable connections between today's needs and tomorrow's possibilities. A reliable connection between companies' goals and the interest of the environment. A reliable connection between efficient manufacture and optimal use.



Comprehensive brochure  
available on request.



## RELICON: expertise based on experience

*Innovative cast resin and gel systems for reliable connections.*

*HellermannTyton is one of the leading suppliers of products for fastening, fixing, identifying and protecting cables and their connecting components.*

*We also develop pioneering systems in the field of data and network technology.*

*Our corporate philosophy focuses on customers and their need for the best possible solutions around cable management. RELICON branded cast resin and gel systems are highly innovative premium products designed to fulfil the highest expectations. RELICON products extend HellermannTyton's insulation and protection portfolio with leading cable connection technology. RELICON products deliver outstanding performance with quality you can rely on.*

*Part of what makes HellermannTyton a market leader is our pioneering spirit coupled with the technical expertise to continuously anticipate future demands and to answer these challenges with optimal product solutions.*





## RELICON SF technology: safe and easy filling

*The special "Safe Filling" (SF) system makes RELICON cast resin joint products a pleasure to work with. When followed correctly, SF ensures that any hazardous contact with the cast resin can be avoided and the fitter has visual control of the mixing and filling steps at all times.*

*Resin and hardener are mixed in a transparent double-chamber pouch. The mixture can be easily poured into the joint sleeve once the supplied nozzle is securely pressed onto the adapter ring in the pouch. The transparent cable joint parts guarantee that the fitter can visually control the entire filling process. The hydrophobic (dewatering) cast resin is environmentally safe. The mixture can be disposed of as regular household waste.*

*Excellent hydrolytic stability makes RELICON cast resins particularly suitable for reliable long-term applications.*



*Transparent 2-chamber pouch for an optimized visual inspection of the mixing process.*



*The middle cold seal between the resin and hardener component opens by means of pressure.*



*Simple mixing of the two components.*



*The patented color change gives the correct mixing process.*



*Automatic and leakproof opening of the pouch through installation of the filling nozzle.*



*The filling nozzle in combination with the adapter makes filling the joint very easy and efficient.*



*Application video:  
RELICON cable jointing*



### Straight-through joint without connectors

#### RELICON i-Line SF

RELICON straight-through joints are made for installations in low-voltage electrical networks. They are suitable for jointing on polymeric cables and wires made of PVC, XLPE, PE, EPR and utility cables.

Application: Underground, submerged, outdoor, indoor and wiring ducts.

#### Features and Benefits

- Two-part, impact-proof, transparent moulding shells
- Compact, optimized dimensions
- Standard cable diameters indicated on the shells
- Safe-Filling system (SF)
- Immediately ready for use
- Longitudinally and transversely watertight
- Joint can be cast under influence of water

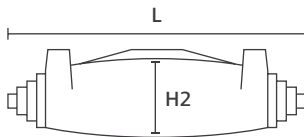
#### Content of Set / Kit

- Cast resin PUR 33 or PUR 771
- Two-chamber pouch, transparent
- Moulding shells, transparent
- SF-system and nozzle
- Protective gloves, emery cloth, installation instructions
- HelaTape PVC insulating tape
- Spacer for max. 5 core cable (i-1 to i-4)

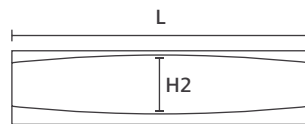


Straight-through joint i-Line SF (safe filling).

<b>MATERIAL</b>	Polyurethane resin 33 (PUR33)
<b>Colour</b>	Green (GN)
<b>Operating Temperature</b>	-25 °C to +120 °C
<b>Storage Temperature</b>	+4 °C to +40 °C
<b>Shelf Life</b>	48 months



i-Line (i-0 - i-6)



i-Line (i-7)

**i** Without connector!



One Step to the Web!

PART NO.	Ø Main Cable	Main Cable mm <sup>2</sup>		Length (L)	Height (H2)	Resin Quantity	Material	Article-No.
		min	max					
<b>i-0 / SF</b>	7-16	3 x 1.5	5 x 2.5	182.0	25.0	95 ml / 130 g	PUR33	435-00080
<b>i-1 / SF</b>	8-24	3 x 1.5	4 x 10 / 5 x 6	190.0	36.0	165 ml / 226 g	PUR33	435-00081
<b>i-1.5 / SF</b>	8-24	3 x 1.5	4 x 16 / 5 x 10	215.0	39.0	220 ml / 301 g	PUR33	435-00088
<b>i-2 / SF</b>	14-30	5 x 1.5	4 x 25 / 5 x 16	276.0	49.0	400 ml / 548 g	PUR33	435-00082
<b>i-3 / SF</b>	23-35	5 x 10	4 x 50 / 5 x 35	360.0	54.0	655 ml / 897 g	PUR33	435-00083
<b>i-4 / SF</b>	28-47	4 x 25	4 x 95	400.0	69.0	1140 ml / 1562 g	PUR33	435-00084
<b>i-5 / SF</b>	33-55	4 x 50	4 x 150	520.0	100.0	2 x 1450 ml / 1987 g	PUR33	435-00085
<b>i-6 / SF</b>	48-70	4 x 150	4 x 240	700.0	128.0	4 x 1640 ml / 2247 g	PUR33	435-00086
<b>i-7 / SF</b>	55-77	4 x 185	4 x 400	870.0	140.0	5 x 1950 ml / 2672 g	PUR33	435-00087

All dimensions in mm. Subject to technical changes.  
Minimum Order Quantity (MOQ) may differ from package content.

Accessory for Relicon cast resin joints for armoured cables with earth bonding/continuity for SWA/STA cables. - Available Dec 2022



Earth strap and constant force springs.



### Two-component polyurethane cast resin

#### RELICON PUR 33

The RELICON PUR 33 cast resin has been created for the electrical insulation and mechanical protection of cable connections in low-voltage electrical networks. Also suitable as mechanical and moisture protection on medium-voltage cable connections.

Application: For indoor and outdoor use.

#### Features and Benefits

- In a practical, transparent two-chamber pouch
- Colour changes from blue to green whilst mixing
- Safe-Filling system (SF)
- Excellent flow properties, low volume shrinkage
- Cold curing and very hydrophobic, to cast under the influence of water
- High hydrolytic stability and good curing at low temperatures
- UV, ageing and weather resistant
- Outstanding impact strength and resistance to moisture and atmospheric corrosion
- Excellent adhesion to polymeric cables and wires made of PVC, XLPE, PE, EPR
- SVHC-free, contains no hazardous substances, the cured product can be disposed of with house hold waste
- Halogen free



Two-component polyurethane cast resin PUR 33.

<b>MATERIAL</b>	Polyurethane resin 33 (PUR33)
<b>Colour</b>	Green (GN)
<b>Operating Temperature</b>	-25 °C to +120 °C
<b>Mixing Ratio (weight)</b>	100:26
<b>Exothermicity max.</b>	+71 °C
<b>Gel Time</b>	48 min. 5 °C, 20 min. 23 °C, 9 min. 40 °C
<b>Pot Life</b>	43 min. 5 °C, 15 min. 23 °C, 8 min. 40 °C
<b>Dielectric Strength</b>	38 kV/mm
<b>Viscosity</b>	4500 mPa*s, 5 °C (EN ISO 2555), 3000 mPa*s, 23 °C (EN ISO 2555)
<b>Impact Strength</b>	26 kJ/m <sup>2</sup>
<b>Shore Hardness D</b>	65±5
<b>Storage Temperature</b>	+4 °C to +40 °C
<b>Shelf Life</b>	48 months

HF ✓

RoHS ✓

TYPE	Resin Quantity	Article-No.
Resin-33-SF-N	95 ml / 130 g	435-12112
	240 ml / 329 g	435-12114
	490 ml / 671 g	435-12117
	1450 ml / 1987 g	435-12121

All dimensions in mm. Subject to technical changes.  
Minimum Order Quantity (MOQ) may differ from package content.



### Gel cable joint with connector

#### RELICON Relilight

Relilight gel cable joints are designed for light installations, especially LED lighting. They are tested according to DIN EN 60998-2-1: 2004 and offer IP68 protection class. The moulding shells are also flame retardant according to UL94 V0. Depending on the connector type, Relilight can be used either for straight-through or as branch joints. They are suitable for jointing on polymeric cables and wires made of PVC, XLPE, PE, EPR etc. The silicone-based RELICON gel in the Relilight cable joints provides insulation, sealing and mechanical protection in one step. Furthermore, they reduce the workload and total cost of installation.

Application: In low-voltage electrical networks as straight-through or branch joints, e.g. for outdoor light installations, underground, submerged, outdoor, indoor and in wiring ducts.



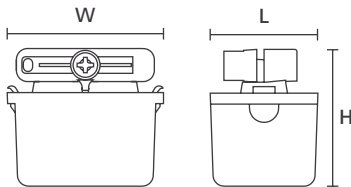
Relilight gel cable joint.

#### Features and Benefits

- Moulding shell: two piece, black, re-openable, with strain relief, flame retardant (UL94 V0), protection class IP68, 1.3 m
- Filled with Relicon non-toxic gel, high dielectric strength >1kV,
- No mixing, ready to assembly
- UV, ageing and weather resistant
- Compact dimensions, with connector
- Unlimited shelf life
- Certified according to DIN EN 60998-2-1:2004

#### Content of Set / Kit

- Moulding shells filled with RELICON gel
- Adapter for strain relief (not for No. 435-01650)
- Installation instructions, connector block, screws
- Wire guide (only No. 435-01654)



<b>MATERIAL</b>	Polyamide 6.6 V0 (PA66V0), Silicone Rubber (SIR)
<b>Colour</b>	Black (BK)
<b>Operating Temperature</b>	-30 °C to +130 °C
<b>Shelf Life</b>	Unlimited
<b>Flammability</b>	UL94 V0

RoHS

With connector block!

IP68, 1.3 meter

TYPE	Ø Main Cable	Main Cable mm <sup>2</sup> min - max		Branch Cable mm <sup>2</sup> min - max		Voltage range	Length (L)	Width (W)	Height (H)	Article-No.
		6 x 0.5	6 x 1.5	-	-					
Relilight V61.5 I2	6.5-12	6 x 0.5	6 x 1.5	-	-	12V - 24V	100.0	24.0	29.0	435-01652

All dimensions in mm. Subject to technical changes.  
Minimum Order Quantity (MOQ) may differ from package content.





## Gel cable joint with connector

### RELICON Relifix V

RELICON Relifix gel technology offers several advantages. It is quick and easy to install. The moulding shells are provided with a film hinge and are made from thick-walled, tough and impact resistant polypropylene (PP). The Relicon gel in the shells insulates and seals the complete connection as the joint is closed. Depending on the connector type, Relifix can be used as a universal straight-through or branch joint. It is suitable for jointing on polymeric cables and wires made of PVC, XLPE, PE, EPR etc.

Application: In low-voltage electrical networks as straight-through and/or branch joint, e.g. underground, submerged, outdoor, indoor and wiring ducts.



Relicon Relifix V gel cable joints.

### Features and Benefits

- Moulding shell: One piece, coloured, re-openable, impact-proof, flame retardant (UL94 V0)
- Filled with Relicon non-toxic gel, high dielectric strength
- No mixing, easy to install
- UV, ageing and weather resistant
- Unlimited shelf life
- With connector, ready for assembly
- Certified according to:
  - DIN EN 50393 (corresponds to DIN VDE 0278-393)
  - DIN EN 60695-2-11 (corresponds to VDE 0471-2-11)

### Content of Set / Kit

- Moulding shells filled with RELICON gel
- Installation instructions
- Connector
- Cable ties
- Allen key (not for type V31,5)



Gel cable joint Relifix V 31,5.



Gel cable joint Relifix V 150.

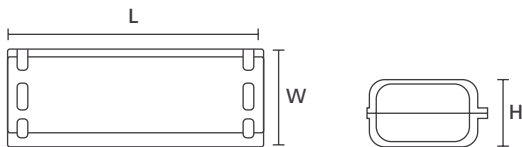


Gel cable joint Relifix V 56, V516.



Gel cable joint Relifix V 525.

**i With connector block!**



Relifix V

<b>MATERIAL</b>	Polypropylene (PP), Silicone Rubber (SIR)
<b>Colour</b>	Green (GN)
<b>Operating Temperature</b>	-20 °C to +90 °C
<b>Shelf Life</b>	Unlimited



TYPE	Ø Main Cable	Main Cable mm <sup>2</sup> min - max		Branch Cable mm <sup>2</sup> min - max		Length (L)	Width (W)	Height (H)	Article-No.
Relifix V56	9-20	3 x 1.5	5 x 6	-	-	146.0	55.0	35.0	435-00654
Relifix 410	9-20	3 x 1.5	4 x 20	3 x 1.5	4 x 2.5	146.0	55.0	35.0	435-00652

All dimensions in mm. Subject to technical changes.  
Minimum Order Quantity (MOQ) may differ from package content.



## Two-component gel

### RELICON KH 100

RELICON KH 100 is a transparent, removable, saltwater resistant, flexible two-component gel based on hydrocarbon resins in trade standard cartridges. It is especially suitable for use with junction boxes in the low-voltage range, located in a humid area or in the ground. After curing, RELICON KH 100 is characterised by its excellent resistance to moisture and very good insulating properties as well as good chemical resistance.

Application: Electrical insulation and moisture protection for the low-voltage networks. Particularly suitable for filling of cable junction boxes.

#### Features and Benefits

- Cartridge with mixing nozzle for use with standard cartridge applicator gun
- Excellent flow properties
- Soft elastic, vibration absorbing, removable
- Outstanding insulating properties
- Cures without developing heat
- Saltwater resistant
- Non-toxic, free of silicone and isocyanate
- SVHC-free, contains no hazardous substances, the cured product can be disposed of with house hold waste
- Halogen free



Two-component gel KH 100.

<b>MATERIAL</b>	Gel KH100 (KH100)
<b>Colour</b>	Transparent (CL)
<b>Operating Temperature</b>	-40 °C to +90 °C
<b>Mixing Ratio (weight)</b>	1:1
<b>Pot Life</b>	40 min. 23 °C
<b>Density</b>	0.95 g/cm <sup>3</sup> , 20 °C (DIN EN ISO 2811-2)
<b>Dielectric Strength</b>	>20 kV/mm
<b>Viscosity</b>	2000 mPa*s, 5 °C (EN ISO 2555), 1500 mPa*s, 23 °C (EN ISO 2555)
<b>Storage Temperature</b>	+4 °C to +40 °C
<b>Shelf Life</b>	18 months



**Silicon free!**



TYPE	Pack Qty	Article-No.
Gel-100 Mixing-Nozzle	10 pcs.	435-00806
Gel-100	250 ml	435-00835

All dimensions in mm. Subject to technical changes.  
Minimum Order Quantity (MOQ) may differ from package content.