

# HellermannTyton

**Crimp Tools,  
Hydraulic Crimp  
Tools and  
Cable Cutters**



2018



## Crimp Tools

**YYT1 — Pre-Insulated Single Grip Terminal Crimper**

- **Range:** 2.5mm<sup>2</sup> — 10mm<sup>2</sup> (Red, Blue, Yellow)
- For insulated terminals
- Ratchet release
- Length: 254mm

**YYT7 — Pre-Insulated Tension Adjustable Double Grip Terminal Crimper**

- **Range:** 2.5mm<sup>2</sup> — 10mm<sup>2</sup> (Red, Blue, Yellow)
- For insulated terminals
- Ratchet release
- Length: 229mm

**YAC5 — Bootlace Ferrule Crimper**

- **Range:** 0.5mm<sup>2</sup> - 6mm<sup>2</sup>
- Ratchet release and pressure adjustment feature
- Length: 203mm

**YAC6 - Bootlace Ferrule Crimper**

- **Range:** 6.0mm<sup>2</sup> — 16.0mm<sup>2</sup>
- Ratchet release and pressure adjustment feature
- Length: 203mm

**YAC17 - Bootlace Ferrule Crimper**

- **Range:** 25mm<sup>2</sup>, 35mm<sup>2</sup>
- Ratchet release and pressure adjustment feature
- Length: 203mm

**YAC8 - Bootlace Ferrule Crimper**

- **Range:** 0.25mm<sup>2</sup> — 6.0mm<sup>2</sup>
- Four point pressure adjustment screw & push to release lever
- Strong but lightweight glass fibre reinforced nylon handles
- Square (quad) profile
- Length: 175mm

**YAC9 - Bootlace Ferrule Crimper**

- **Range:** 0.08mm<sup>2</sup> — 6.0mm<sup>2</sup>
- Six point pressure adjustment screw & push to release lever
- Strong but lightweight glass fibre reinforced nylon handles
- Hexagonal profile
- Length: 175mm (L)



Note: Some images and specifications may differ from what is displayed in this brochure.



## Crimp Tools

### YYT15 - Close End Connector Crimper

- **Range:** 1.0mm<sup>2</sup>, 2.5mm<sup>2</sup> - 5.5mm<sup>2</sup>
- Ratchet release feature
- Length: 203mm



### YYT8 - Uninsulated Terminal Crimper

- **Range:** 1.5mm<sup>2</sup>, 2.5mm<sup>2</sup> - 4.0mm<sup>2</sup>
- Ratchet release feature
- Length: 266mm



### HD16L - Heavy Duty Crimper (Uninsulated Terminals)

- **Range:** 1.5mm<sup>2</sup> - 16.0mm<sup>2</sup>
- Ratchet release feature
- Length: 270mm



### HD0650AU - Hex Crimper

- **Range:** 6/10/16/25/35/50mm<sup>2</sup>
- Hexagonal crimper with movable and rotating dies
- For tubular cable lugs and connectors
- Dies included
- Length: 390mm



### HD06120AU - Hex Crimper

- **Range:** 6/10/16/25/35/50/70/95/120mm<sup>2</sup>
- Hexagonal crimper with movable and rotating dies
- For tubular cable lugs and connectors
- Length: 650mm
- Dies included



### HYCP400 - Hand Hydraulic Crimper

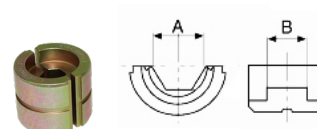
- **Range:** 16mm<sup>2</sup> - 300mm<sup>2</sup>
- Automatic low/high - pressure conversion with
- Rapid/slow operating motion
- Heavy duty case included
- Pressure relief valve for overload protection
- Head rotates 180°
- Dimensions: 612 x 150mm
- Force at die face: 12 metric ton (700 bar)
- C-head opening: 32mm
- Dies sold separately



#### Hydraulic Die Specification and Part No.

PART NO.	Die Number	A	B
DIECU16	K12-C16AF6.3	6.3	17.57
DIECU25	K12-C25AF7.7	7.7	17.57
DIECU35	K12-C35AF9.2	9.2	17.57
DIECU50	K12-C50AF10.4	10.4	17.57
DIECU70	K12-C70AF11.5	11.5	17.57
DIECU95	K12-C95AF14.2	14.2	17.57
DIECU120	K12-C120AF16.5	16.5	14.14
DIECU150	K12-C150AF18.3	18.3	14.14
DIECU185	K12-C185AF20.0	20.0	14.14
DIECU240	K12-C240AF23.1	23.1	10.2
DIECU300	K12-C300AF26.0	26.0	10.2

All dimensions in mm. Subject to technical changes.





### Crimp Tools

#### HYLEC32 - Battery Operated Hydraulic Crimper Kit

- Range: 16mm<sup>2</sup> - 300mm<sup>2</sup>
- 14,4 Volt Lithium-Ion battery powered
- Number of crimps per charge: 60
- 12.7 ton die force
- Head rotates 180°
- Dimensions: 385mm (L) x 307mm (H) x 74mm (W)
- Weight: 6.8Kg
- C-head opening: 32mm
- Dies sold separately
- Additional battery available (HYLEC32BATT)



#### FH700FP - Hydraulic Foot Pump

- Length: 720mm
- Weight: 12.0 kg
- Two stage pumping action (700 bar)
- Complete with 2 metre hose



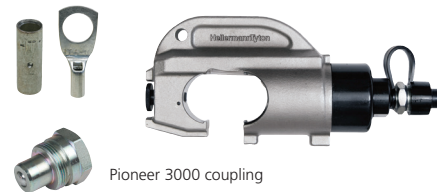
#### HP700A - Hydraulic Hand Pump

- Length: 595mm
- Weight: 9 kg
- Two stage pumping action (700 bar)
- Complete with 2 metre hose



#### HYCP400HE - Hydraulic Crimp Head

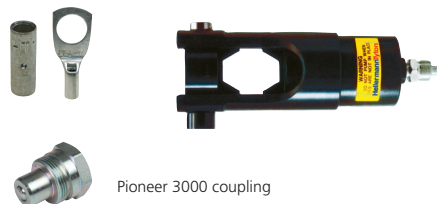
- Max output: 11.6 ton
- Range: 16mm<sup>2</sup> - 400mm<sup>2</sup>
- Dies sold separately (Refer to HYCP400 table for die part numbers)



#### HYCP630HE - Hydraulic Crimp Head

- Max output: 22.5 ton
- Range: 16mm<sup>2</sup> - 630mm<sup>2</sup>
- Complete with 400/500/630mm<sup>2</sup> dies

Die Code	Crimp Sizes
CP630400D	400mm <sup>2</sup>
CP630500D	500mm <sup>2</sup>
CP630630D	630mm <sup>2</sup>



#### ADP630HE - Die Adapter

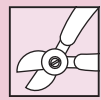
- Enables HYCP630HE to take dies of HYCP400 (Refer to HYCP400 table for die part numbers)



#### CEP15SS - Hydraulic Pump

- Length: 319mm
- Weight: 10.0 kg (with two 18V 4.0Ah batteries)
- 1.2 L / min at low pressure
- 0.3 L / min at high pressure
- Pressure and operation data of date display function
- Programming switch for crimping, cutting or lifting propose on the panel
- Warning function: Buzzer alert at long deep if crimping not complete and losing pressure when failure
- Display related pumping pressure and battery capacity





## Cable Cutters and Core Cutters

### CC22 - Cable Cutter

- Cuts copper and aluminium
- Cuts up to 25mm<sup>2</sup>
- Length: 165mm



### CC38 - Cable Cutter

- Cuts copper and aluminium
- Cuts up to 38mm<sup>2</sup>
- Length: 210mm



### CC60 - Cable Cutter

- Cuts copper and aluminium
- Cuts up to 60mm<sup>2</sup>
- Length: 235mm



### SCC60 - Cable Cutter

- For steel rod: 5mm max.
- Wire rope: 7mm max.
- Copper cable: 60mm<sup>2</sup>
- AWG 1/0 max.
- Length: 310mm



### RCC325PH - Core Cutter

- Speedy cutting of copper cable
- Not for steel or hard copper
- Capacity: 380mm<sup>2</sup> diameter
- Length: 290mm



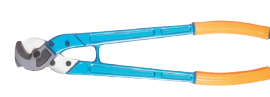
### RCC500 - Core Cutter

- Speed and safer operation for cutting cables
- Not for steel or hard copper
- Spare blades available
- Capacity 500mm<sup>2</sup> diameter
- Length: 285mm



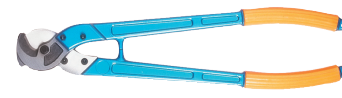
### CC250 - Cable Cutter

- Copper cable: 250mm<sup>2</sup>
- Aluminium cable: 250mm<sup>2</sup>
- Length: 600mm



### CC500 - Cable Cutter

- Copper cable: 500mm<sup>2</sup>
- Aluminium cable: 500mm<sup>2</sup>
- Length: 800mm
- Spare blades available on request (CC500BLD)

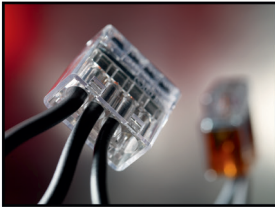


### S25 - PVC Pipe Cutter

- 34mm PVC cutter
- Metal handle



Note: Some images and specifications may differ from what is displayed in this brochure.



# HellermannTyton

HellermannTyton Australia  
Unit 2, 12 - 14 Mangrove Lane  
Taren Point NSW 2229  
PO Box 2225 Taren Point 2229  
Toll Free: 1800 815 018  
Tel: +61 2 9540 3955  
Fax: +61 2 6540 3457  
E-Mail: [cservice@HellermannTyton.com.au](mailto:cservice@HellermannTyton.com.au)  
[www.HellermannTyton.com.au](http://www.HellermannTyton.com.au)