

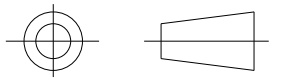
Heatshrinkable moulded shapes Low Profile Straight Boots - HellermannTyton

DRAWING No.
152057

SHT. 1
OF
1 SHTS.

© THE COPYRIGHT OF THIS DRAWING IS RESERVED BY HELLERMANN TYTON. IT IS ISSUED ON CONDITION THAT IT IS NOT COPIED, REPRODUCED OR DISCLOSED TO A THIRD PARTY EITHER WHOLLY OR IN PART WITHOUT THE CONSENT IN WRITING OF HELLERMANN TYTON.

THIRD ANGLE PROJECTION

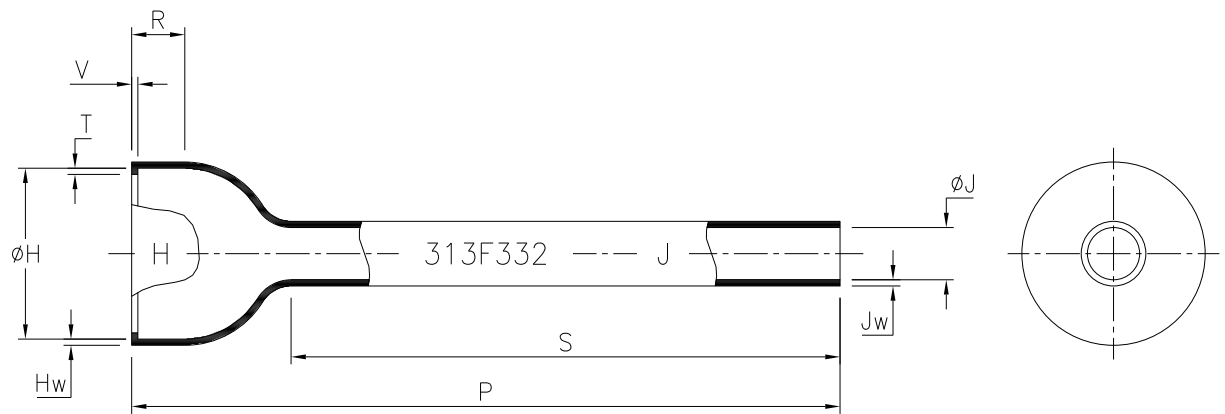


BS 8888

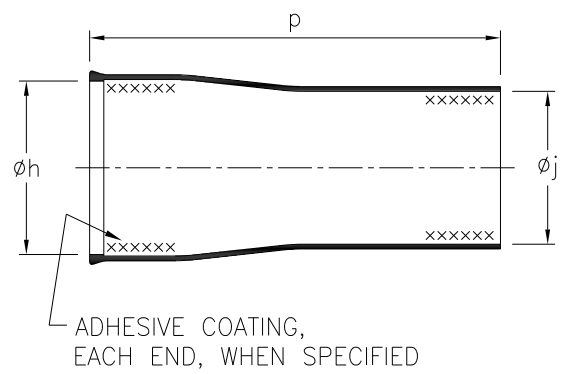
DO NOT SCALE
IF IN DOUBT ASK

Q.A.	H/S SETT
H/S Q.A.	REL. INSP.
H/S PROD	EXT.ISS.CODE 7

STANDARD PART (AFTER UNRESTRICTED RECOVERY)



EXPANDED (AS SUPPLIED)



FOR MOULDING PURPOSES ONLY

MOULD SHAPE	ØH	ØJ	P	R	S	T	V	Hw	Jw
	MAX	MAX	±6.4 (±.25)	±1.8 (±.07)	±6.4 (±.25)	±0.8 (±.03)	±0.8 (±.03)	±20%	±20%
313F332-*	11.7 (.46)	7.0 (.28)	121.2 (4.77)	12.2 (.48)	98.6 (3.88)	1.3 (.05)	1.8 (.07)	1.8 (.07)	1.8 (.07)
313F332-*-18	11.7 (.46)	7.0 (.28)	44.4 (1.75)	12.2 (.48)	21.8 (0.86)	1.3 (.05)	1.8 (.07)	1.8 (.07)	1.8 (.07)
313F332-*-19	11.7 (.46)	7.0 (.28)	76.2 (3.00)	12.2 (.48)	53.6 (2.11)	1.3 (.05)	1.8 (.07)	1.8 (.07)	1.8 (.07)
313F332-*-33	11.7 (.46)	7.0 (.28)	82.5 (3.25)	12.2 (.48)	59.9 (2.36)	1.3 (.05)	1.8 (.07)	1.8 (.07)	1.8 (.07)

PART NO.	EXPANDED DIMENSIONS (AS SUPPLIED)			RECOVERED DIAMETERS		RECOVERED DIMENSIONS						
	Øh	Øj	p	ØH	ØJ	P	R	S	T	V	Hw	Jw
	MIN	MIN	TOL	MAX	MAX	±10%	±15%	±10%	±0.8 (±.03)	+1.5,-0.8 (+.06,-.03)	+1.5,-0.8 (+.06,-.03)	±0.8 (±.03)
313F332-*	27.2 (1.07)	20.8 (.82)	79.4 ±19 (3.13 ±.75)	13.2 (.52)	7.6 (.30)	121.2 (4.77)	12.2 (.48)	98.6 (3.88)	1.3 (.05)	1.5 (.06)	1.5 (.06)	1.5 (.06)
313F332-8	27.2 (1.07)	20.8 (.82)	96.8 ±19 (3.81 ±.75)	13.2 (.52)	7.6 (.30)	121.2 (4.77)	12.2 (.48)	98.6 (3.88)	1.3 (.05)	1.5 (.06)	1.5 (.06)	1.5 (.06)
313F332-*-18	27.2 (1.07)	20.8 (.82)	33 ±6.4 (1.30 ±.25)	13.2 (.52)	7.6 (.30)	44.4 (1.75)	12.2 (.48)	21.8 (0.86)	1.3 (.05)	1.5 (.06)	1.5 (.06)	1.5 (.06)
313F332-*-19	27.2 (1.07)	20.8 (.82)	65 ±6.4 (2.56 ±.25)	13.2 (.52)	7.6 (.30)	76.2 (3.00)	12.2 (.48)	53.6 (2.11)	1.3 (.05)	1.5 (.06)	1.5 (.06)	1.5 (.06)
313F332-*-33	27.2 (1.07)	20.8 (.82)	70 ±6.4 (2.75 ±.25)	13.2 (.52)	7.6 (.30)	82.5 (3.25)	12.2 (.48)	59.9 (2.36)	1.3 (.05)	1.5 (.06)	1.5 (.06)	1.5 (.06)

* ALL MATERIALS UNLESS SPECIFIED OTHERWISE

Heatshrinkable moulded shapes Low Profile Straight Boots - HellermannTyton

For information only, not subject to technical changes.

2	P1329	G.B.	11/10/10
1	P1190	S.Almond	01/04/08
ISSUE	NOTE No.	DRAWN	DATE

HellermannTyton

Pennycross Close, Plymouth, Devon, England
Tel ++44 (0) 1752 701261 Fax ++44 (0) 1752 790058

NAME	S.Almond	SCALE	NTS
DATE	01/04/08	DIMS IN	mm (in)

ADHESIVE
A3
ORIGINAL SHEET SIZE
420mm x 297mm

SHT. 1	OF
1 SHTS.	

TITLE	PART No.	DRAWING No.
BOTTLE SLEEVE	313F332	152057