

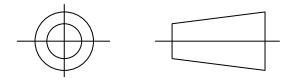
Heatshrinkable moulded shapes Low Profile Straight Boots - HellermannTyton

DRAWING No.  
152063

SHT. 1  
OF  
1 SHTS.

© THE COPYRIGHT OF THIS DRAWING IS RESERVED BY HELLERMANN TYTON. IT IS ISSUED ON CONDITION THAT IT IS NOT COPIED, REPRODUCED OR DISCLOSED TO A THIRD PARTY EITHER WHOLLY OR IN PART WITHOUT THE CONSENT IN WRITING OF HELLERMANN TYTON.

THIRD ANGLE PROJECTION



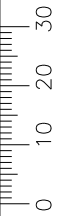
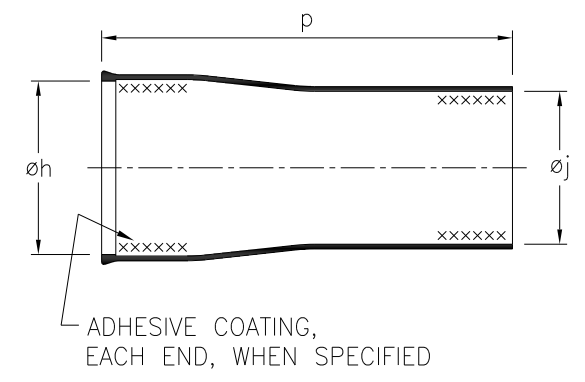
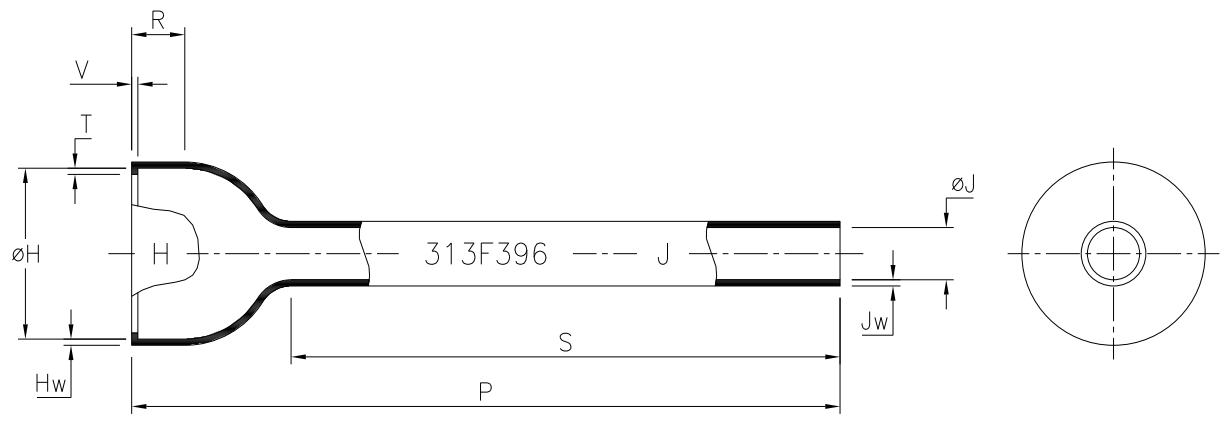
BS 8888

DO NOT SCALE  
IF IN DOUBT ASK

|          |              |
|----------|--------------|
| Q.A.     | H/S SETT     |
| H/S Q.A. | REL. INSP.   |
| H/S PROD | EXT.ISS.CODE |

STANDARD PART (AFTER UNRESTRICTED RECOVERY)

EXPANDED (AS SUPPLIED)



FOR MOULDING PURPOSES ONLY

| MOULD SHAPE | øH   | øJ   | P     | R  | S     | T   | V   | Hw  | Jw  |
|-------------|------|------|-------|----|-------|-----|-----|-----|-----|
| 313F396 *   | 39.1 | 14.7 | 228.6 | 16 | 153.2 | 1.8 | 2.0 | 2.0 | 2.0 |

| PART NO.  | EXPANDED DIMENSIONS (AS SUPPLIED) |             |                          | RECOVERED DIAMETERS |            | RECOVERED DIMENSIONS |          |              |             |                       |                       |             |
|-----------|-----------------------------------|-------------|--------------------------|---------------------|------------|----------------------|----------|--------------|-------------|-----------------------|-----------------------|-------------|
|           | øh                                | øj          | p                        | øH                  | øJ         | P                    | R        | S            | T           | V                     | Hw                    | Jw          |
|           | MIN                               | MIN         | TOL                      | MAX                 | MAX        | ±10%                 | ±15%     | ±10%         | ±0.8 (±.03) | +1.5,-0.8 (+.06,-.03) | +1.5,-0.8 (+.06,-.03) | ±0.8 (±.03) |
| 313F396-* | 62.7 (2.47)                       | 53.3 (2.10) | 152.4 ±25.4 (6.00 ±1.00) | 45.5 (1.79)         | 16.8 (.66) | 228.6 (9.00)         | 16 (.63) | 153.2 (6.03) | 1.8 (.07)   | 1.8 (.07)             | 1.8 (.07)             | 1.8 (.07)   |
| 313F396-8 | 62.7 (2.47)                       | 53.3 (2.10) | 184.2 ±25.4 (7.25 ±1.00) | 45.5 (1.79)         | 16.8 (.66) | 228.6 (9.00)         | 16 (.63) | 153.2 (6.03) | 1.8 (.07)   | 1.8 (.07)             | 1.8 (.07)             | 1.8 (.07)   |

\* ALL MATERIALS UNLESS SPECIFIED OTHERWISE

Heatshrinkable moulded shapes Low Profile Straight Boots - HellermannTyton

For information only, not subject to technical changes.

|       |          |          |          |
|-------|----------|----------|----------|
| 1     | P1190    | S.Almond | 01/04/08 |
| ISSUE | NOTE No. | DRAWN    | DATE     |

**HellermannTyton**

Pennycross Close, Plymouth, Devon, England  
Tel ++44 (0) 1752 701261 Fax ++44 (0) 1752 790058

|       |               |         |          |          |  |                         |
|-------|---------------|---------|----------|----------|--|-------------------------|
| NAME  | S.Almond      | SCALE   | NTS      | ADHESIVE | A3<br>ORIGINAL SHEET SIZE<br>420mm x 297mm | SHT. 1<br>OF<br>1 SHTS. |
| DATE  | 01/04/08      | DIMS IN | mm (in)  |          |  |                         |
| TITLE | BOTTLE SLEEVE |         | PART No. | 313F396  | DRAWING No.                                | 152063                  |