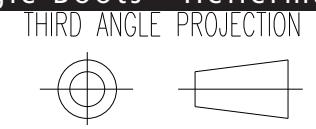


Heatshrinkable moulded shapes Low Profile Right Angle Boots - HellermannTyton

DRAWING No.  
152070

SHT. 1  
OF  
1 SHTS.

© THE COPYRIGHT OF THIS DRAWING IS RESERVED BY HELLERMANN TYTON. IT IS ISSUED ON CONDITION THAT IT IS NOT COPIED, REPRODUCED OR DISCLOSED TO A THIRD PARTY EITHER WHOLLY OR IN PART WITHOUT THE CONSENT IN WRITING OF HELLERMANN TYTON.

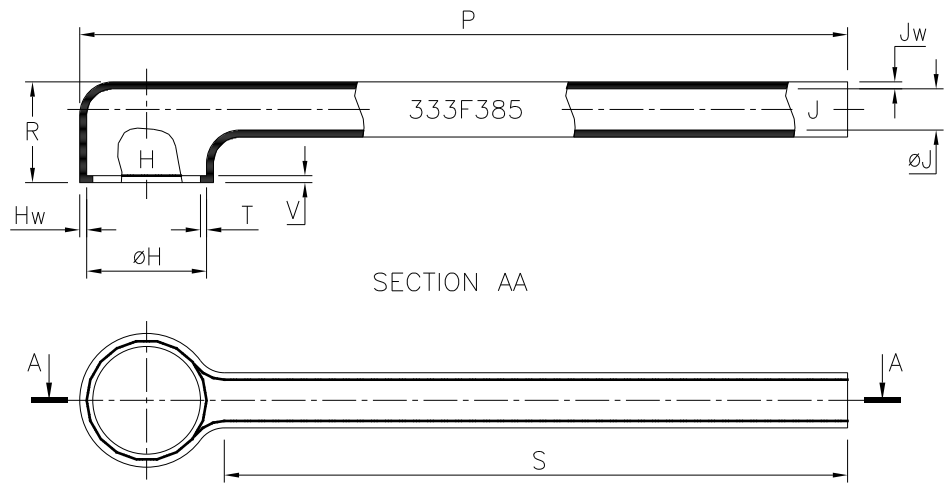


BS 8888

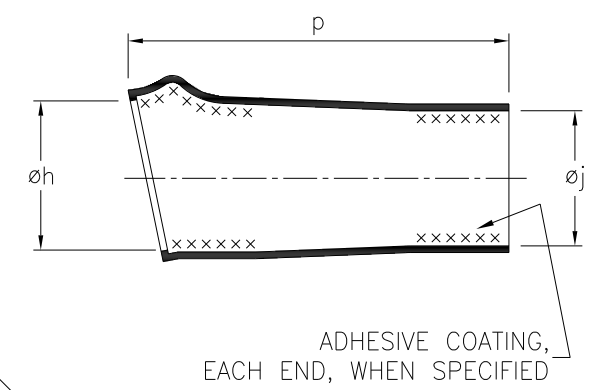
DO NOT SCALE  
IF IN DOUBT ASK

Q.A.	H/S SETT
H/S Q.A.	REL. INSP.
H/S PROD	EXT.ISS.CODE

STANDARD PART (AFTER UNRESTRICTED RECOVERY)



EXPANDED (AS SUPPLIED)



30  
20  
10  
0

FOR MOULDING PURPOSES ONLY

MOULD SHAPE	øH	øJ	P	R	S	T	V	Hw	Jw
333F385 *	35.6	12.6	224.5	29.5	173.2	1.8	2.0	2.0	2.0

PART NO.	EXPANDED DIMENSIONS (AS SUPPLIED)			RECOVERED DIAMETERS		RECOVERED DIMENSIONS						
	øh	øj	p	øH	øJ	P	R	S	T	V	Hw	Jw
	MIN	MIN	TOL	MAX	MAX	±10%	±15%	±10%	±0.8 (±.03)	+1.5,-0.8 (+.06,-.03)	+1.5,-0.8 (+.06,-.03)	±0.8 (±.03)
333F385-*	51.6 (2.03)	44.5 (1.75)	171.5 ±19 6.75 ±.75	45.5 (1.79)	15 (.59)	224.5 (8.84)	29.5 (1.16)	173.2 (6.82)	1.8 (.07)	1.8 (.07)	1.8 (.07)	1.8 (.07)

\* ALL MATERIAL CODES

Heatshrinkable moulded shapes Low Profile Right Angle Boots - HellermannTyton

For information only, not subject to technical changes.

1	P1191	S.Almond	04/04/08
ISSUE	NOTE No.	DRAWN	DATE

**HellermannTyton**

Pennycross Close, Plymouth, Devon, England  
Tel ++44 (0) 1752 701261 Fax ++44 (0) 1752 790058

NAME	S.Almond	SCALE	NTS	ADHESIVE	A3 ORIGINAL SHEET SIZE 420mm x 297mm	SHT. 1 OF 1 SHTS.
DATE	04/04/08	DIMS IN	mm (in)			
TITLE	RIGHT ANGLE BOOT		PART No.	DRAWING No.		
			333F385	152070		