

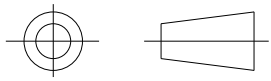
Heatshrinkable moulded shapes bulbous 4-Way Outlet Shapes, Breakout Boots - HellermannTyton

DRAWING No.
152171

SHT. 1
OF
1 SHTS.

© THE COPYRIGHT OF THIS DRAWING IS RESERVED BY HELLERMANN TYTON. IT IS ISSUED ON CONDITION THAT IT IS NOT COPIED, REPRODUCED OR DISCLOSED TO A THIRD PARTY EITHER WHOLLY OR IN PART WITHOUT THE CONSENT IN WRITING OF HELLERMANN TYTON.

THIRD ANGLE PROJECTION



BS 8888

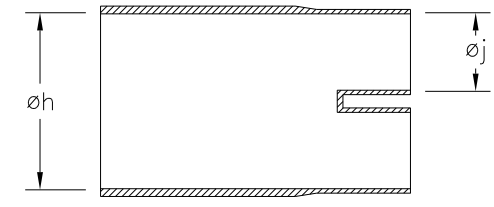
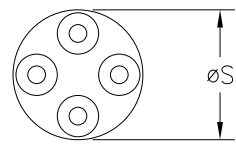
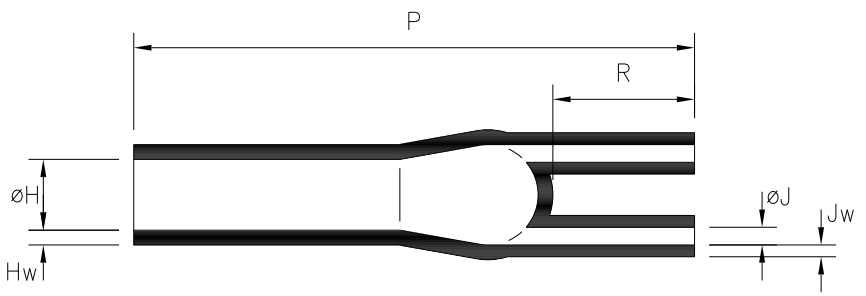
DO NOT SCALE
IF IN DOUBT ASK

Q.A.	H/S SETT
H/S Q.A.	REL. INSP.
H/S PROD	EXT.ISS.CODE
6/8	



STANDARD PART (AFTER UNRESTRICTED RECOVERY)

EXPANDED (AS SUPPLIED)



* TURRETS SPACED 3.2mm APART

PART NO.	EXPANDED DIMENSIONS (AS SUPPLIED)		RECOVERED DIAMETERS			RECOVERED DIMENSIONS			
	h	øj	øH	øJ	øS	P	R	Hw	Jw
	MIN	MIN	MAX	MAX	NOMINAL	±10%	±10%	±20%	±20%
* 409-2	47.4 (1.87)	21.5 (0.85)	22.9 (0.65)	6.4 (0.25)	38.1 (1.50)	165.1 (6.50)	38.1 (1.50)	4.1 (0.16)	3.3 (0.13)

Heatshrinkable moulded shapes bulbous 4-Way Outlet Shapes, Breakout Boots - HellermannTyton

For information only, not subject to technical changes.

2	P1256	L.F.	09/02/09
1	P1234	G.B.	04/09/08
ISSUE	NOTE No.	DRAWN	DATE

HellermannTyton

Pennycross Close, Plymouth, Devon, England
Tel ++44 (0) 1752 701261 Fax ++44 (0) 1752 790058

NAME	G.BASER	SCALE	NTS	ADHESIVE	A3 ORIGINAL SHEET SIZE 420mm x 297mm	SHT. 1 OF 1 SHTS.
DATE	04/09/08	DIMS IN	mm (in)			
TITLE	4 WAY OUTLET SLEEVE			PART No.	DRAWING No.	
				409	152171	