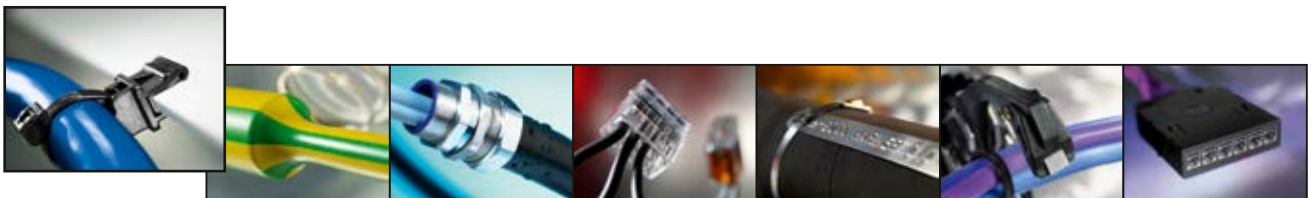
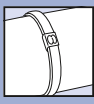




MST-Series

Stainless steel metal ties with new punch-locking mechanism





Cable Ties and Fixings

Cable Ties, Stainless Steel

Cable Ties with punch-locking mechanism

• MST-Series

Stainless steel cable ties are designed for fixing loads and cables securely in hazardous industrial environments such as railway carriages, jet engines, inside power plants or on offshore drilling platforms, where exposure to extremes of weather, saltwater and temperature are common. The MST-Series tie with its new punch-locking mechanism is an excellent choice especially for environments which require high resistance to vibrations.

Features and Benefits

- MST-Series cable ties are made from stainless steel 304
- No loosening after bundling
- Corrosion and weather resistant
- Significantly improved vibration resistance
- Outstanding chemical resistance
- Space saving solution
- Safe cut-off (no sharp edges)
- Antimagnetic
- High temperature resistant
- Non-burning



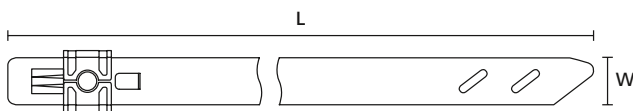
Metal cable ties MST-Series.

MATERIAL	Stainless Steel (SS304)
Operating Temperature	-80 °C to +538 °C
Flammability	Non burning

HF ✓

RoHS ✓

LFH ✓



MST tie

TYPE	Width (W)	Length (L)	Bundle Ø max.		Material	Pack Cont.	Article-No.
MST200S	5.9	207.0	50.0	900	SS304	100	111-01549
MST360S	5.9	360.0	100.0	900	SS304	100	111-01550
MST500S	5.9	500.0	145.0	900	SS304	100	111-01551
MST700S	5.9	700.0	205.0	900	SS304	100	111-01552

All dimensions in mm. Subject to technical changes. The MST-Series (up to 5.9 mm) can be used in combination with the stainless steel P-Mount. The mount is simple to install with a screw or bolt and ensures a durable fixing solution. Minimum Order Quantity (MOQ) may differ from package content. Other packaging options may also be available.

Screw Fixing Mounts

• Stainless Steel 316 mounts for MST Ties

Features and Benefits

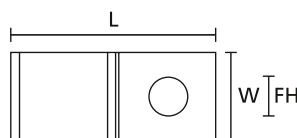
- 2-way fixing for stainless steel cable ties
- High performance stainless steel 316 material
- 10mm slot width
- Single 4mm, 5mm or 6mm fixing hole
- Heavy duty design
- Robust and durable solution
- Resistant to a range of materials and conditions
- Quick and easy to install
- Safe and secure solution for cables, tubing, conduits and pipes
- Ideal for a range of industries and applications

MATERIAL	Stainless Steel (SS316)
Operating Temperature	-80 °C to +538 °C
Flammability	Non burning

HF ✓

RoHS ✓

LFH ✓



SSPC-Series

TYPE	Length (L)	Width (W)	Height (H)	Hole Ø (FH)	Material	Colour	Pack Cont.	Article-No.
SSPC4	23.0	10.2	4.5	4.2	SS316	Metal (ML)	100	151-00837
SSPC5	23.0	10.2	4.5	5.3	SS316	Metal (ML)	100	151-00838
SSPC6	23.0	10.2	4.5	6.3	SS316	Metal (ML)	100	151-00839

All dimensions in mm. Subject to technical changes. Minimum Order Quantity (MOQ) may differ from package content. Other packaging options may also be available.



Manual Tensioning Tool for MST-Series Cable Ties

- MST6 up to 5.9 mm strap width

The MST6 tool has been specially developed for reliably applying HellermannTyton MST-Series metal cable ties. The punch-lock mechanism mechanically crimps the tie ensuring a reliable bundling with perfect resistance to vibration. The tension force is freely adjustable by the operator.

Features and Benefits

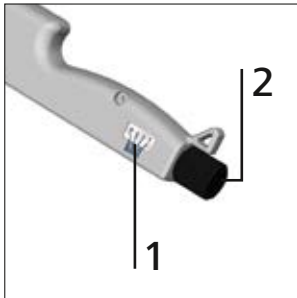
- Tough metal tool
- Ergonomic design
- Consistent tensioning and automatic cutting of metal ties
- Designed for use with MST-S Series ties (5.9 mm)



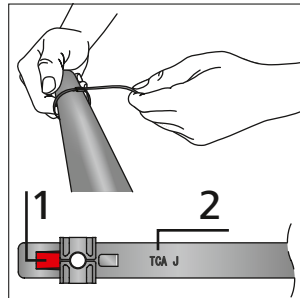
MST6.

TYPE	Strap Width max. (G)	Strap Thickness max.	Weight	Article-No.
MST6	5.9	0.3	0.525 kg	110-61000

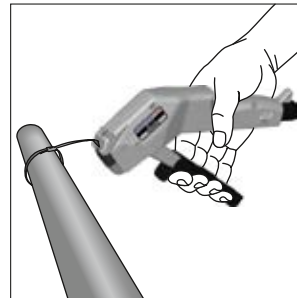
All dimensions in mm. Subject to technical changes.



Turn the tension adjustment knob (2) until the tension indicator (1) shows the desired tension setting.



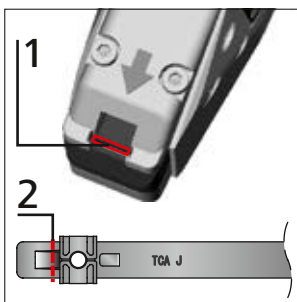
Tighten the tie by hand. Make sure that the marking TCA J (2) is facing up. MST-S series ties have a red mark (1) printed on the surface.



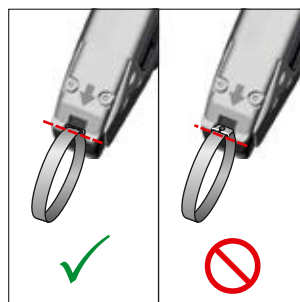
Insert the tie into the insertion slot as shown in the figure.



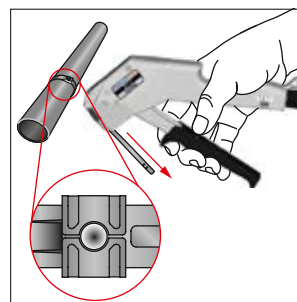
One Step to the Web!



Make sure that the head of the metal tie (2) is positioned correctly within the insertion slot (1).



Left shows the correct position of the head. If the upper part of the head is not flush with the surface of the insertion slot, the position is not correct (right).



After the tension has been released, squeeze the trigger hard to cut off the end of the metal tie. When removing the tool, slide it down, away from the head of the metal tie.



HellermannTyton

HellermannTyton Ltd

Wharf Approach

Aldridge, Walsall, West Midlands

WS9 8BX

Tel: +44 1922 458 151

Fax: +44 1922 743 053

E-Mail: info@HellermannTyton.co.uk

www.HellermannTyton.co.uk