





Information and installation instructions for self-adhesive mounting bases

HellermannTyton uses two different types of adhesives for self-adhesive bases: acrylate and synthetic rubber. These differ in the operating temperature range and the 'pull off' force of the adhesive. Synthetic rubber has an excellent initial grip, allowing for almost immediate use. Acrylate adhesive has

less initial grip, so there is a need to wait for a few hours before use, but has a higher 'pull off' force than synthetic rubber. This enables a permanent fixing lasting months or even years. To use these adhesives the surface must be dry, and free of dust, oil, oxides, parting agents and other impurities.

For this the use of isopropane/water (50/50) is recommended. After cleaning allow the surface to dry completely. Peel off the protective backing on the self-adhesive base, ensuring the adhesive is not touched. Apply the part to the surface and press down firmly for several seconds.

Acrylate	
Base material	PE foam or PU foam
Temperature range	at least up to +105 °C
 	

Synthetic rubber	
Base	PE foam
Temperature range	at least -40°C to +60°C
 	

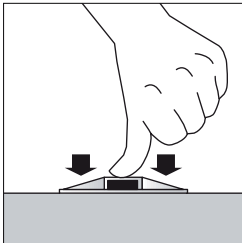
1. Instructions for use



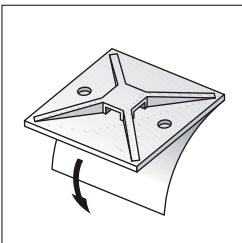
The surface must be dry, free from dust, oil, oxides, parting agents and other impurities. The surface to be glued should be cleaned using a clean cloth and isopropanol / water (50/50). When using other appropriate cleaning agents, ensure that they do not attack the surface nor leave any residues.

2. 

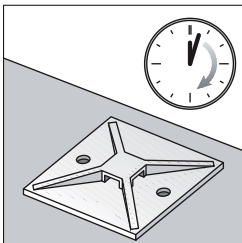
After cleaning allow the surface to air-dry completely.

4. 

Press down firmly on the base with the thumbs for several seconds.

3. 

Peel off protective backing and ensure the adhesive area is not touched.

5. 

Depending on the type of adhesive, wait for several minutes (synthetic rubber) or hours (acrylate) so that the adhesive can bond completely with the surface.

We will be happy to send you on request an up-to-date technical datasheet for whichever adhesive you are using.

Fixing Parts with Special Adhesive

• SolidTack-Series

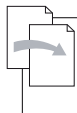
SolidTack mounts offering an innovative fixing solution especially for low energy surfaces like PP, PE or if drilling a hole is not possible. Suitable for a wide range of in- and outdoor applications on varnished or plastic or metal surfaces in many areas i.e.g. electrical cabinet, railway, aerospace, automotive and agriculture machinery.

Features and Benefits

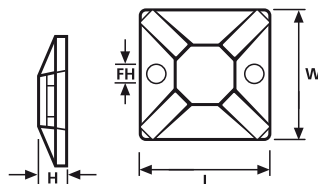
- MB mounts with homogeneous system of acrylic adhesive
- Very good initial adhesion, increases with time
- High cohesive strength combined with good weathering resistance
- Innovative fixing solution for low energy surfaces like PP, PE or painted/varnished surfaces
- Protection foil with finger lift for easy peel off



SolidTack products work on varnished and powder coated surfaces.



Material specification
please see page 21.



Cable Tie Mounts MB3, MB4, MB5

Adhesive	mod. Acrylate
Adhesive Operating Temperature	-40 °C to +90 °C

Article-No.	Type	Length (L)	Width (W)	Height (H)	Fixing Hole Ø (FH)	Strap Width max. (G)	Material	Colour
151-00432	MB3APT	19.0	19.0	3.8	3.1	4.1	PA66	Black (BK)
151-00514	MB3APT	19.0	19.0	3.8	3.1	4.1	PA66	Natural (NA)
151-00433	MB4APT	28.0	28.0	4.7	4.0	5.4	PA66	Black (BK)
151-00587	MB4APT	28.0	28.0	4.7	4.0	5.4	PA66	Natural (NA)
151-00434	MB5APT	38.0	38.0	6.4	4.7	10.0	PA66	Black (BK)

All dimensions in mm. Subject to technical changes.

Paste Adhesive Mount

• PMB5


PMB5 pasty mount offers a fixing solution wherever screw fixing is not allowed. Due to a larger diameter the mount can even be installed onto uneven surfaces. PMB5 pasty mount is used in the railway industry as well as in the renewable energy industry. Further applications are in the ship building industry, in the electrical industry and the production of switching cabinets.

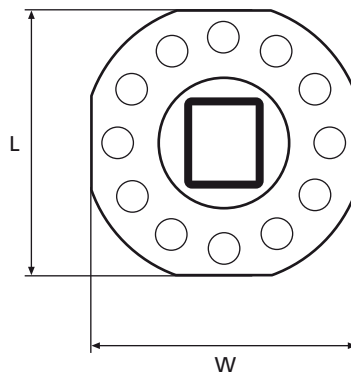
Features and Benefits

- PMB5 paste adhesive mount for fixings with paste/liquid adhesive.
- Mount geometry offers a good form closure with cured adhesive
- Can even be installed onto uneven surfaces due to large diameter
- Can also be applied in combination with hot-melt adhesive, as mount is made of heat resistant PA66

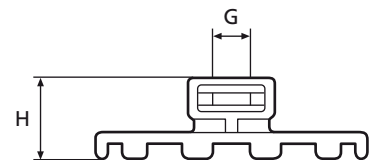


PMB5 mount with paste adhesive.

 **Material specification please see page 21.**



PMB5



Article-No.	Type	Length (L)	Width (W)	Height (H)	Strap Width max. (G)	Material	Colour
151-00498	PMB5	36.0	36.0	10.7	4.8	PA66HS	Black (BK)

All dimensions in mm. Subject to technical changes.

Harness Clip for Heavy Duty Applications, for Screws or Studs

Primarily designed for use in the automotive/truck industry, these parts can be used in a wide variety of industries and applications where bundles need mounting.

Features and Benefits

- Secure alignment to the bundle due to H-design
- Pre-fixing of clip with integrated nose
- For cable ties up to 12.7 mm wide
- High tightening torque through metal bushing (Variants "For high strength" and "Double holder")
- Easy maintenance of bundle by simply changing the cable tie



U.S. Patent Number 5,820,083

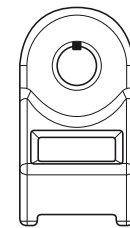


Material specification please see page 21.

• Standard Torque Mounts

Article-No.	Type	Length (L)	Width (W)	Height (H)	Fixing Hole Ø (FH)	Strap Width max. (G)	Material	Colour
151-00134	HDM19	36.3	19.3	16.7	4.7	12.7	PA66HIR	Black (BK)
151-00437	HDM25	36.3	19.3	16.7	6.3	12.7	PA66HIR	Black (BK)
151-00439	HDM312	36.3	19.3	16.7	7.8	12.7	PA66HIR	Black (BK)

All dimensions in mm. Subject to technical changes.

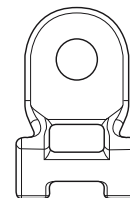


Standard Torque Mounts

• Medium Torque Mounts

Article-No.	Type	Length (L)	Width (W)	Fixing Hole Ø (FH)	Strap Width max. (G)	Material	Colour
151-00442	HDM401	46.0	24.0	9.5	12.7	PA66HIR	Black (BK)
151-07100	HDM321	46.0	24.0	8.0	12.7	PA66HSW	Black (BK)
151-07500	HDM501	46	24.0	12.7	12.7	PA66HIRHS	Black (BK)

All dimensions in mm. Subject to technical changes.

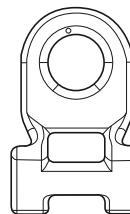


Medium Torque Mounts

• High Torque Mounts

Article-No.	Type	Length (L)	Width (W)	Fixing Hole Ø (FH)	Strap Width max. (G)	Material	Colour
151-07000	HDM320	47.0	25.0	8.0	12.7	PA66HIR	Black (BK)
151-07200	HDM400	47.0	25.0	9.5	12.7	PA66HIRHS	Black (BK)
151-07400	HDM500	47.0	25.0	12.7	12.7	PA66HIRHS	Black (BK)

All dimensions in mm. Subject to technical changes.



High Torque Mounts

• High Torque Double Mounts

Article-No.	Type	Width (W)	Fixing Hole Ø (FH)	Strap Width max. (G)	Material	Colour
151-00756	HDM375BDM4W	34.5	9.5	12.7	PA66HIRHS	Black (BK)

All dimensions in mm. Subject to technical changes.



High Torque Double Mounts

Harness Clip for Heavy Duty Applications. for Screws or Studs, for parallel separation

- S2HM25 with hexagonal retention feature
- S2CM25 with a socket counter bore

This heavy duty harness clip helps to fix and secure cable and wires in railway, truck and agriculture vehicle construction as well as in ship building.

Features and Benefits

- For parallel routing of bundles
- Secure alignment to the bundle due to H-design
- Cable tie head can be moved after bundling
- For cable ties up to 12.7 mm wide
- Easy maintenance of bundle by simply changing the cable tie



This saddle mount is installed between two bundles to separate them and prevent chafing and wear.



**Material specification
please see page 21.**

Article-No.	Type	Length (L)	Width (W)	Height (H)	Fixing Hole Ø (FH)	Bundle Ø max. (each side)	Material	Colour
151-29403	S2HM25	45	30.0	23.0	6.0	89.0	PA66HIRHS	Black (BK)
151-29400	S2CM25	45	30.0	23.0	6.0	89.0	PA66HIRHS	Grey (GY)

All dimensions in mm. Subject to technical changes.

- SAOM82 with Turnstop
- SAM83 with a socket counter bore

This heavy duty harness clip helps to fix and secure cable and wires in railway, truck and agriculture vehicle construction as well as in ship building.

Features and Benefits

- Guides bundles securely above sharp edges
- For bolts or screws of D = 8 mm
- Cable tie head can be moved after bundling
- Secure alignment to the bundle due to H-design
- For cable ties up to 12.7 mm wide



Axial oval mounts stand off bundles from frame rails and cross members to prevent them from rubbing and chafing.

Article-No.	Type	Length (L)	Width (W)	Height (H)	Stud Ø	Material	Colour
151-29701	SAOM82	34	26.0	35.0	8.0	PA66HIRHS	Black (BK)
151-29600	SAM83	34	26.0	35.0	8.0	PA66HIRHS	Grey (GY)

All dimensions in mm. Subject to technical changes.

Fixing elements for Parallel Routing, twistable

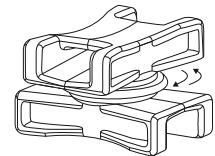
These fixing element for parallel routing can be used where bundles need separation from each other combined with the necessary functionality to support moving harnesses.

Features and Benefits

- For parallel routing of bundles that can be twisted 360° even after setting
- Secure alignment to the bundle due to H-design
- Cable tie head can be moved after bundling
- For cable ties up to 12.7 mm wide
- For post-installation of bundles



The spacers can be easily rotated by hand, allowing the bundles to be crossed and rotated at any angle.



swivels

Article-No.	Type	Length (L)	Width (W)	Height (H)	Bundle Ø min.	Bundle Ø max.	Min. Extraction Force (N)	Material	Colour
151-06500	DSWS4	23.6	20.3	18.0	6.0	76.0	445	PA66HS, POM	Black (BK)
151-06502	DSWS5	40.6	25.4	23.6	16.0	152.0	1112	PA66HS	Black (BK)

All dimensions in mm. Subject to technical changes.

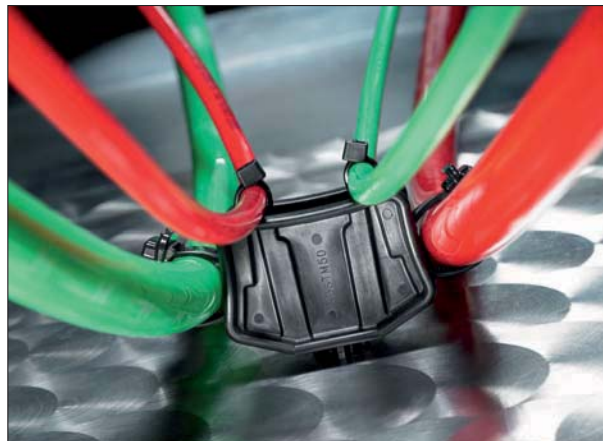
Fixing Elements with Fir Tree, for Distance Routing

• S3STM50

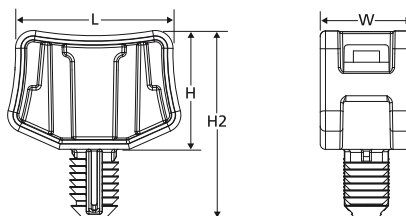
With its heavy duty fixing ability this product offers excellent performance for the truck, ship and construction vehicle industries.

Features and Benefits

- For parallel routing of four bundles
- Secure alignment to the bundle due to H-design
- For cable ties up to 12.7 mm wide
- Pre-fixing of tie with integrated nose



The mount can secure up to 4 separate bundles, providing parallel spacing between the frame rail and adjacent bundles.



Fir Tree Saddle Mounts

Material specification please see page 21.

Article-No.	Type	Length (L)	Width (W)	Height (H)	Height (H2)	Fixing Hole Ø (FH)	Panel Thickness min.	Panel Thickness max.	Bundle Ø max.	Material	Colour
151-29500	S3STM50	50.0	22.0	35.0	55.0	12.7	1.90	13.00	127.0	PA66HIRHS	Black (BK)

All dimensions in mm. Subject to technical changes.

Fixing Elements for BHT-Ties for Distance Routing

• MSBT120

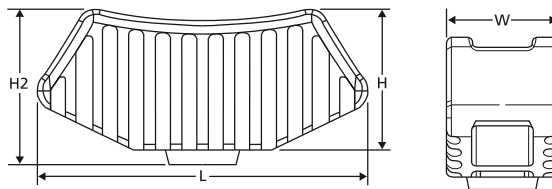
With its heavy duty fixing ability this product offers excellent performance for the truck, ship and construction vehicle industries.

Features and Benefits

- For parallel routing of three bundles
- Retainer is fixed in the hole with BHT-tie
- Socket centres retainer in the hole and can protect tie from sharp edges



Saddle Mount MSBT120.



MSBT120

Article-No.	Type	Length (L)	Width (W)	Height (H)	Height (H2)	Fixing Hole Ø (FH)		Panel Thickness min.	Bundle Ø max.		Material	Colour
						min.	max.		(side)	(center)		
151-29301	MSBT120	48.3	16.5	20.6	22.2	11.2	20.8	4.10	25.4	152.4	PA66HIRHS	Black (BK)

All dimensions in mm. Subject to technical changes.

• CGS1 for Convoluted Tubes

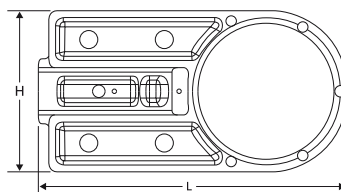
This heavy duty fixing element can be used to guide tubes in a defined distance to the substructure.

Features and Benefits


- Tubes are fixed a defined distance from the substructure
- Defined diameter for the wire entry
- Retainer is fixed in the hole with BHT-tie



This product perfectly secures convoluted tubings up to 26 mm diameter.



Cable Guide Standoff

 **Material specification please see page 21.**

Article-No.	Type	Length (L)	Width (W)	Height (H)	Bundle Ø max.	Material	Colour
151-00006	CGS1	56.6	25.4	30.5	26.0	PA66HIRHSW	Black (BK)

All dimensions in mm. Subject to technical changes.