



FDN Pit Arm Brackets

MB-FDN-PA-001 and MB-FDN-PA-002

Application Information

Two mounting brackets which have been designed for use with the FDN 16 Port Base closure. The bracket is manufactured from black powder coated 4mm mild steel and fits over a 50mm square box section pit arm frame. The bracket is secured to the base of the FDN 16 port closure and allows the cover to be removed providing easy access to the base and trays for primary installation or remedial work to the closure.

Features & Benefits

- Simple design, easy to install
- Allows quick, easy access to the closure whilst in-situ
- Manufactured from powder coated mild steel
- Suitable for use with HellermannTyton 16 Port FDN closure

Technical Data

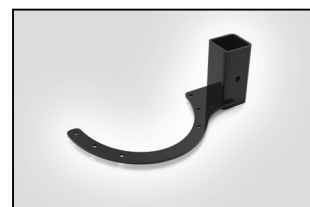
| Dimensions (mm) | | D | W | H |
|--------------------|-----------|-----------------|-------|-----|
| | Short Arm | 215 | 201.5 | 100 |
| | Long Arm | 124 | 282 | 100 |
| Material | | Stainless Steel | | |



FDN Pit Arm Bracket - Short Arm



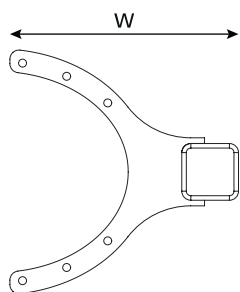
FDN Pit Arm Bracket - Short Arm



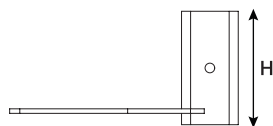
FDN Pit Arm Bracket - Long Arm

Technical Diagrams

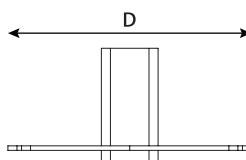
MB-FDN-PA-001



FDN Pit Arm Bracket (top view)

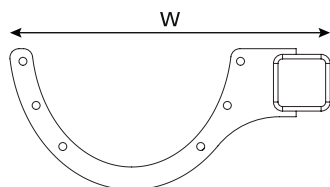


FDN Pit Arm Bracket (front view)

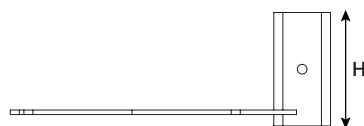


FDN Pit Arm Bracket (side view)

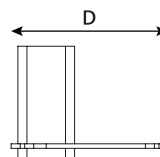
MB-FDN-PA-002



FDN Pit Arm Bracket (top view)



FDN Pit Arm Bracket (front view)



FDN Pit Arm Bracket (side view)