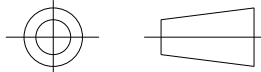
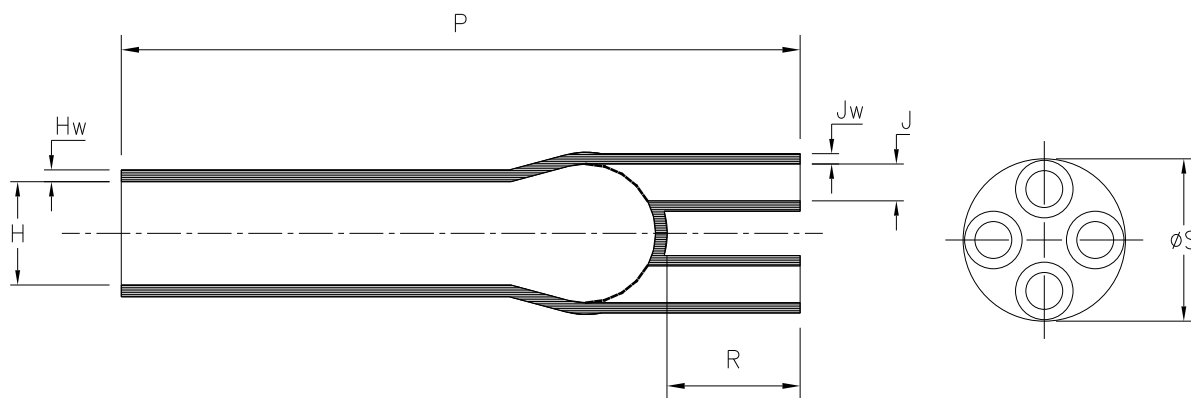


Heatshrinkable moulded shapes bulbous 4-Way Outlet Shapes, Breakout Boots - HellermannTyton

DRAWING No. 152172	SHT. 1 OF 1 SHTS.	© THE COPYRIGHT OF THIS DRAWING IS RESERVED BY HELLERMANN TYTON. IT IS ISSUED ON CONDITION THAT IT IS NOT COPIED, REPRODUCED OR DISCLOSED TO A THIRD PARTY EITHER WHOLLY OR IN PART WITHOUT THE CONSENT IN WRITING OF HELLERMANN TYTON.	THIRD ANGLE PROJECTION 	BS 8888	DO NOT SCALE IF IN DOUBT ASK	Q.A.	H/S SETT	
						H/S Q.A.	REL. INSP.	
						H/S PROD	EXT.ISS.CODE	<table border="1"><tr><td>4</td><td>1</td><td>8</td></tr><tr><td>6</td><td></td><td></td></tr></table>
4	1	8						
6								

STANDARD PART (AFTER UNRESTRICTED RECOVERY)

EXPANDED (AS SUPPLIED)



PART NO.	EXPANDED DIMENSIONS (AS SUPPLIED)		RECOVERED DIAMETERS			RECOVERED DIMENSIONS			
	Øh	Øj	ØH	ØJ	ØS	P	R	Hw	Jw
	MIN	MIN	MAX	MAX	NOMINAL	±10%	±10%	±20%	±20%
444-1	95.0 (3.74)	45 (1.77)	35.6 (1.10)	12.5 (0.49)	50.8 (2.00)	240 (9.45)	55 (2.17)	4.0 (0.16)	3.5 (0.14)
444-2	95.0 (3.74)	45 (1.77)	35.6 (1.10)	12.5 (0.49)	50.8 (2.00)	240 (9.45)	55 (2.17)	4.0 (0.16)	3.5 (0.14)

Heatshrinkable moulded shapes bulbous 4-Way Outlet Shapes, Breakout Boots - HellermannTyton

For information only, not subject to technical changes.

				<div><div>HellermannTyton</div><div><div>Pennycross Close, Plymouth, Devon, England</div><div><div>Tel ++44 (0) 1752 701261</div><div><div>Fax ++44 (0) 1752 790058</div></div></div></div></div>	NAME	G.BASER	SCALE	NTS	ADHESIVE	A3 ORIGINAL SHEET SIZE 420mm x 297mm	SHT. 1 OF 1 SHTS
					DATE	04/09/08	DIMS IN	mm (in)			
3	P1256	L.F.	09/02/09		TITLE					PART No.	DRAWING No.
2	P1255	L.F.	03/02/09		4 WAY OUTLET SLEEVE					444	152172
1	P1235	G.B.	04/09/08								
ISSUE	NOTE No.	DRAWN	DATE								