



CEP Adaptor

Application Information

The CEP Adaptor has been designed by HellermannTyton to be clipped directly to the Customer Entry Point (CEP) enclosure, without using any screws.

Product Description

This adaptor fits at the base of the CEP Enclosure and at the top of the CEP Micro Capping.

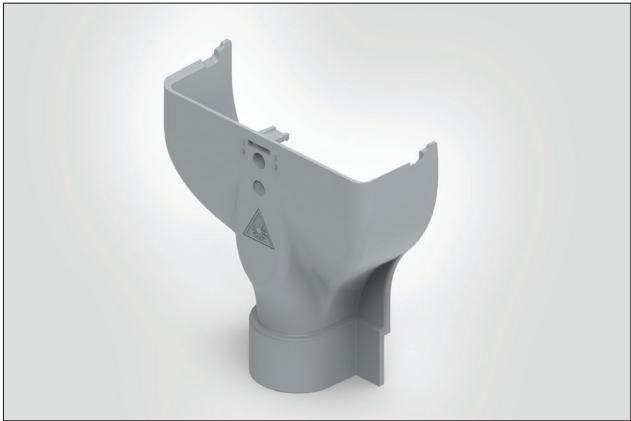
Manufactured in grey RAL7040 PC-ABS, the CEP Adaptor is UV stabilised. Other colour options are available (black or brown).

Features and Benefits:

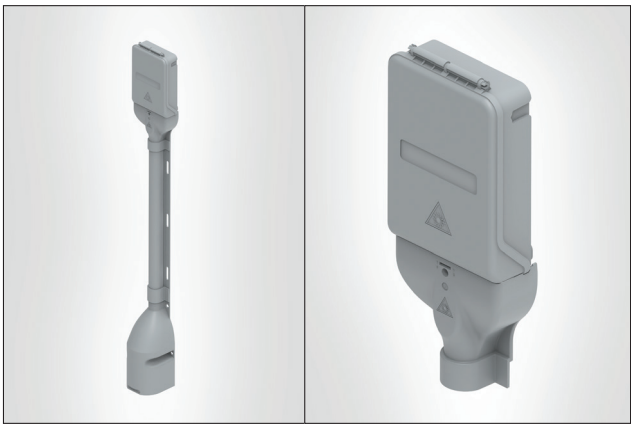
- Hides and protects fibre cable
- Compatible with the CEP Enclosure and CEP Micro Capping
- Discreet wall-mounted accessory
- Protection from water ingress
- UV Stable

Technical Data

Dimensions (mm)	H	W	D
	82	80	28
Material	Polycarbonate/acrylonitrile Butadiene (PC-ABS)		
Part Code	CEP-ADAPTOR-GY CEP-ADAPTOR-BK CEP-ADAPTOR-BR		



CEP Adaptor.



CEP Enclosure with all accessories in a wall mounted installation: CEP Adaptor, CEP Micro Capping, and CEP Micro Capping Base.

CEP Adaptor shown with CEP Enclosure.

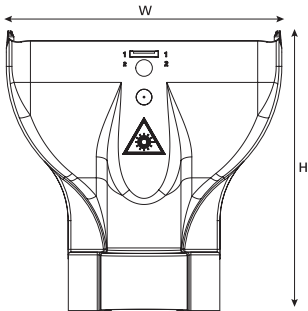


CEP Adaptor in black.

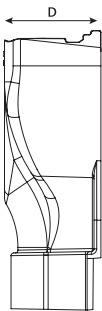


CEP Adaptor in brown.

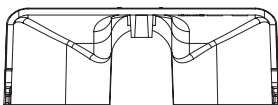
Technical Diagrams



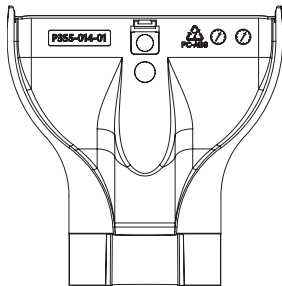
CEP Adaptor (front view).



CEP Adaptor (side view).



CEP Adaptor (top view).

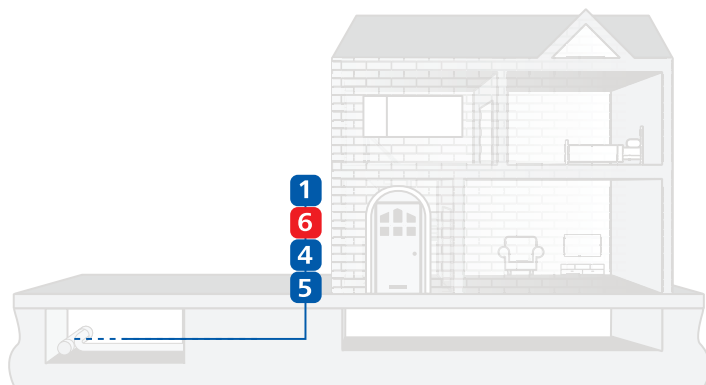


CEP Adaptor (rear view).



### Typical Network Setup

#### Underground



#### Key

<b>1</b>	<b>CEP-BLANK</b> Enclosure
<b>2</b>	<b>TOBYBOX300</b> Toby Box designed to house CEP
<b>3</b>	<b>CEP-LEAD-IN-KIT</b> Lead-In-Kit for Micro Capping
<b>4</b>	<b>CEP-MCAPPING</b> Micro Capping
<b>5</b>	<b>CEP-MCAP-BASE</b> Micro Capping Base
<b>6</b>	<b>CEP-ADAPTOR</b> Micro Capping Adaptor