



CEP Lead-in Kit

Application Information

The CEP Lead-in Kit has been designed by HellermannTyton to hide and protect the fibre when it bends to enter the customer property. It fits at the top of the CEP Micro Capping. This CEP (Customer Entry Point) accessory is used when the fibre has been spliced in the CEP enclosure inside the TOBYBOX300 (CEP underground installation).

Product Description

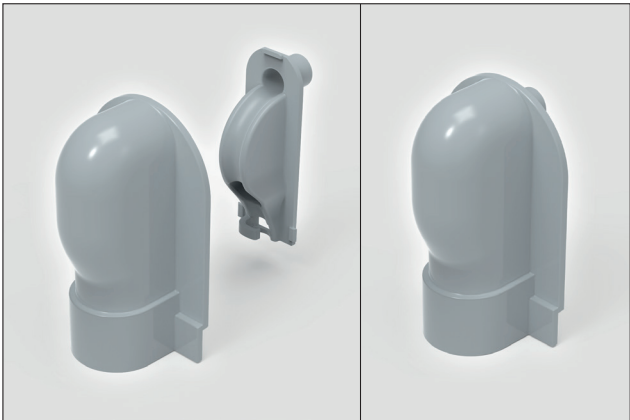
The CEP Lead-in Kit is made of two main parts: a protective inlet and a cable retention guide that allows positive fibre management. Manufactured in grey RAL7040 PC-ABS, the CEP Micro Capping is UV stabilised, other colour options are available upon request (black or brown).

Features and Benefits:

- Positive fibre management via cable retention guide
- Compatible with the CEP Micro Capping
- Discreet wall-mounted accessory
- UV Stable

Technical Data

Dimensions (mm)		H	W	D
		71	44	24
Material	Inlet	Polycarbonate/acrylonitrile Butadiene (PC-ABS)		
	Guide			
Part Code		CEP-LEAD-IN-KIT-GY		
		CEP-LEAD-IN-KIT-BK		
		CEP-LEAD-IN-KIT-BR		



CEP Lead-in Kit shown as two parts and assembled.



CEP Lead-in Kit in CEP Underground installation: CEP Enclosure inside TOBYBOX300, CEP Lead-in Kit, CEP Micro Capping and CEP Micro Capping Base.

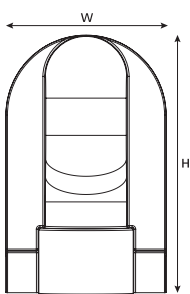


CEP Lead-in Kit in black.

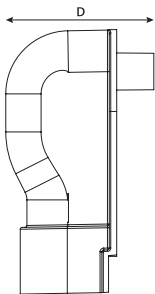


CEP Lead-in Kit in brown.

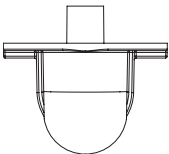
Technical Diagrams



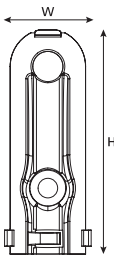
CEP Lead-in Kit assembled (front view).



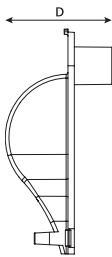
CEP Lead-in Kit assembled (side view).



CEP Lead-in Kit assembled (top view).



Cable Retention Guide assembled (front view).

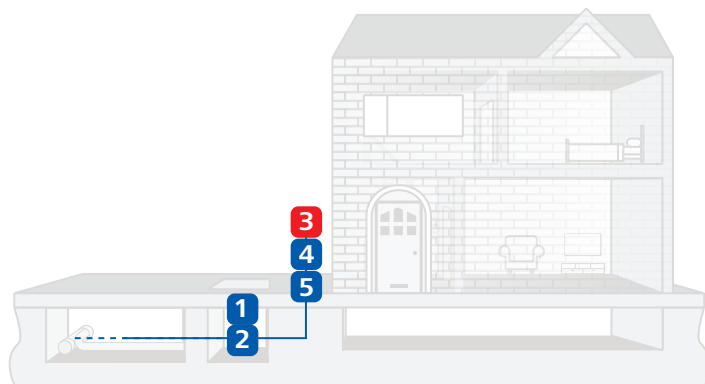


Cable Retention Guide assembled (side view).



Typical Network Setup

Underground



Key

- | | |
|---|---|
| 1 | CEP-BLANK
Enclosure |
| 2 | TOBYBOX300
Toby Box designed to house CEP |
| 3 | CEP-LEAD-IN-KIT
Lead-In-Kit for Micro Capping |
| 4 | CEP-MCAPPING
Micro Capping |
| 5 | CEP-MCAP-BASE
Micro Capping Base |
| 6 | CEP-ADAPTOR
Micro Capping Adaptor |