



CEP Micro Capping

Application Information

The CEP Micro Capping has been designed by HellermannTyton to be fitted with several Customer Entry point (CEP) accessories.

When the CEP enclosure is mounted on a wall or a façade, the CEP Micro Capping will be fitted between the CEP Adaptor and the CEP Micro Capping Base.

When the CEP enclosure is mounted inside the HellermannTyton Toby Box (TOBYBOX300), the CEP Micro Capping will be clipped underneath the CEP Lead-in Kit and the CEP Micro Capping Base.

The CEP Micro Capping can also be used to hide any cables with a maximum of 20mm diameter.

Product Description

The CEP Micro Capping is a narrow and discreet capping with multiple fixing points. It protects and hides the fibre cable before entering the building.

Manufactured in grey RAL7040 PVC, the CEP Micro Capping is UV stabilised and comes in 500mm lengths. Other colour options are available (black or brown).

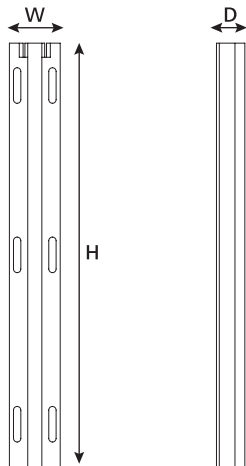
Features and Benefits:

- Hides fibre cable
- Discreet wall-mounted accessory
- Protection from water ingress
- UV Stable

Technical Data

Dimensions (mm)		H	W	D
		500	44	24
Material	Micro Capping	Rigid Polyvinyl Chloride (PVC)		
	Screws	Zinc plated Steel		
Part Code		CEP-MCAPPING500-GY		
		CEP-MCAPPING500-BK		
		CEP-MCAPPING500-BR		

Technical Drawings

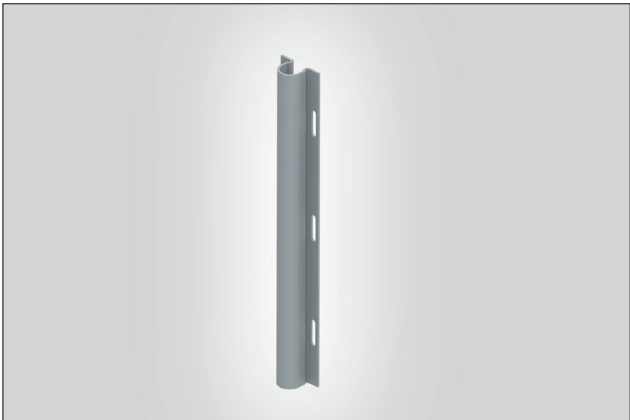


CEP Micro Capping (front view).

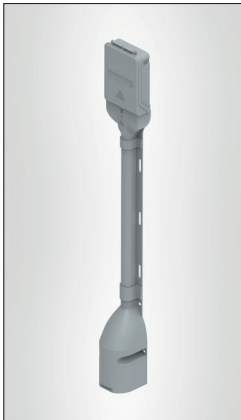
CEP Micro Capping (side view).



CEP Micro Capping (top view).



CEP Micro Capping.



CEP Micro Capping in CEP Wall Mounted Installation: CEP Enclosure, CEP Adaptor, CEP Micro Capping and CEP Micro Capping Base.



CEP Micro Capping in CEP Underground Installation: CEP Enclosure inside TOBYBOX300, CEP Lead-In Kit, CEP Micro Capping and CEP Micro Capping Base.



CEP Micro Capping in black.

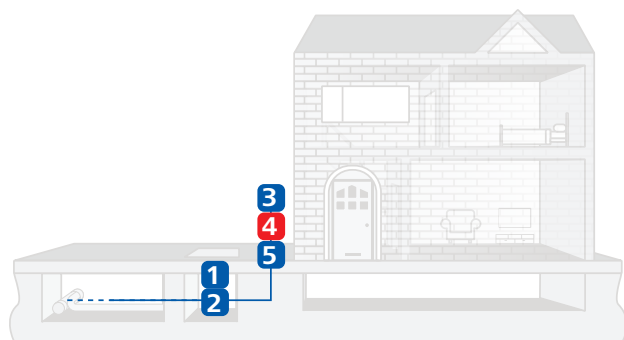


CEP Micro Capping in brown.

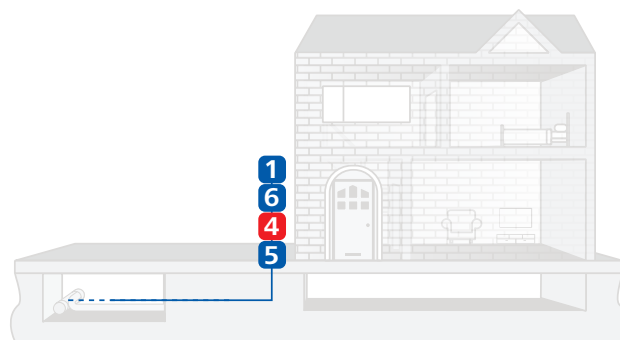


### Typical Network Setup

#### Underground



#### Wall mounted



#### Key

1	<b>CEP-BLANK</b> Enclosure
2	<b>TOBYBOX300</b> Toby Box designed to house CEP
3	<b>CEP-LEAD-IN-KIT</b> Lead-In-Kit for Micro Capping
4	<b>CEP-MCAPPING</b> Micro Capping
5	<b>CEP-MCAP-BASE</b> Micro Capping Base
6	<b>CEP-ADAPTOR</b> Micro Capping Adaptor