



Mounting Bracket Comparison Table

PART CODE	Outdoor	Indoor	Application		Product										Loop Storage	Colour	Unique Feature
			Pole	Facade / Wall	AFN	FFE	MCCE	MDU									
								S1XS	S1	S2	S3	S4	S5				
Single Enclosure Brackets																	
MB-AFN/FFE-PB001	✓	✓	✓	✗	✓	✓	✗							✓	Black	- Fits 2 different enclosure sizes	
MB-AFN-PWB/BK-400MM	✓	✓	✓	✓	✗	✓	✗							✓		- Loop storage on inside of bracket - Easier to use loop basket after installation - Short bracket complying with CP08	
MB-AFN-PWB/BK-400MM	✓	✓	✓	✓	✓	✗	✗							✓		- Loop storage on inside of bracket - Easier to use loop basket after installation - Shorter than the 2 above brackets	
Multiple Enclosure Brackets (Pole ONLY, can not be wall mounted)																	
MB-AFN-DUAL-BRKT requires 2x of the following brackets:																Black	- Fits 2 different enclosure sizes - Maximises space on the pole by holding 2 brackets - Easier to use inside loop baskets after installation
MB-AFN-PWB/BK-400MM	✓	✗	✓	✗	✓	✗	✗							✓			
MB-FFE-PWB/BK-400MM	✓	✗	✓	✗	✗	✓	✗							✓			
MB-AFN/FFE-V-BRKT-V2	✓	✗	✓	✗	✓	✓	✗							✗	- Maximises space on the pole by holding 2 enclosures - Lightweight bracket		
MDU Rear Mounting Storage Brackets																	
MDU-S1XS-RMSBRKT/GY	✓	✓	✗	✓			✓	✓						✓	Light Grey	- Hangs on back plate mounted on the wall allowing the removal of MDU - Up to 4m Drop Cable Storage	
MDU-S1-RMSBRKT/GY	✓	✓	✗	✓		✓			✓					✓			
MDU-S2-RMSBRKT/GY	✓	✓	✗	✓	✓					✓				✓			
MDU-S3-RMSBRKT/GY	✓	✓	✗	✓							✓			✓			
MDU-S4-RMSBRKT/GY	✓	✓	✗	✓								✓		✓			
MDU-S5-RMSBRKT/GY	✓	✓	✗	✓									✓	✓			

Single Enclosure Brackets



MB-AFN/FFE-PB001



MB-FFE-PWB/BK-400MM



MB-AFN-PWB/BK-400MM

Multiple Enclosure Brackets

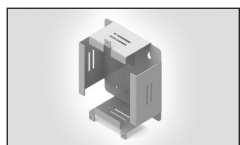


MB-AFN-DUAL-BRKT



MB-AFN/FFE-V-BRKT-V2

MDU Rear Mounting Storage Brackets



MDU-S1XS-RMSBRKT/GY



MDU-S1-RMSBRKT/GY



MDU-S2-RMSBRKT/GY



MDU-S3-RMSBRKT/GY



MDU-S4-RMSBRKT/GY



MDU-S5-RMSBRKT/GY