



MDU Enclosure Accessories

HellermannTyton designed an extended range of optional MDU enclosure accessories for cable entry and drop cables, to ensure that no undue stress is put upon the fibre cables which may affect the optical performance.

Single Cable Entry Kit

The single cable entry kit includes a metal anchor bracket to provide strain relief for incoming cables. It comes with a plastic clamp base and 4 spacers for cable from 4.5mm to 13mm for the S3 enclosure.

Only the strength member bracket is included in the S4/S5 kit for cable from 0.1 to 4.5mm.

Loop Through Cable Kit

The kit consists of gland plates and dual output bracket with rubber spacers to provide an excellent seal into the enclosure whilst making the cable more secure. Clamp sizes vary, with options ranging from S3 to the larger S4/S5 size.

Multi Drop Cable Seal

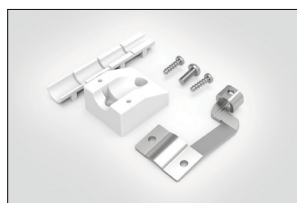
Drop seal kits include one single seal that can hold up to 24 drop cables within a seal plate. The S4/S5 drop seal can accommodate up to 24 of 7mm diameter drop cables / ducts, whereas the S3 drop seal allows up to 24 of 5mm drop cables. A lock plate option exists for S3 enclosures using a lock.

Drop Cable Anchor Kit

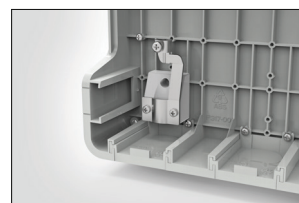
Drop Cable anchor kits consist of two multi-branch metal brackets that provide multiple anchoring points where drop cables can be secured with small cable ties. Bracket sizes range from S3 to S4/S5.

Features and benefits

- Single Cable or Loop Through Kit
- Strength member anchoring clamps
- One single seal for up to 24 drop cables
- Anchor brackets for drop cables
- Quick and simple to install



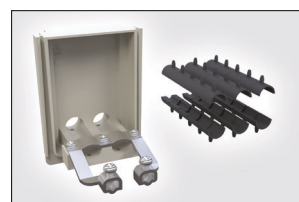
S3-AK-001.



S3-AK-001 in situ.



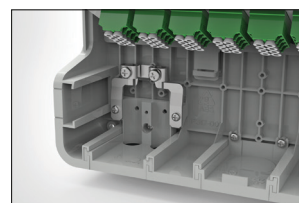
S5-AK-001.



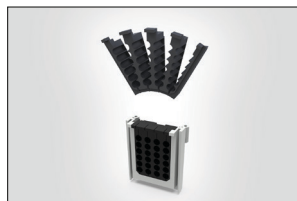
LG-S5-3MM-14MM.



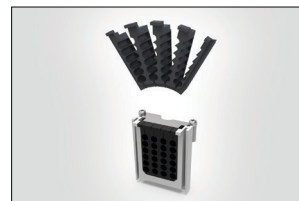
LG-S3-3MM-14MM.



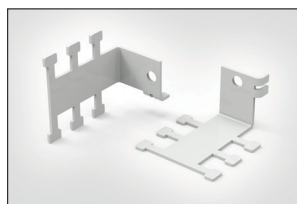
LG-S3-3MM-14MM in situ.



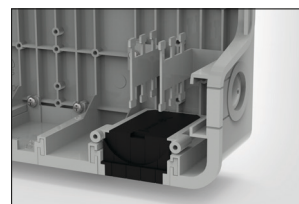
MDS-S3-24X5MM or MDS-S5-24X7MM.



MDSLP-S3-24X5MM.



S3-AK-DC-02 or S5-AK-DC-02.



S3-AK-DC-02 and MDS-S3-24X5MM in situ.

Part Code	Description	UNS
S3-AK-001	S3 Anchor Kit for single cable Entry with clamp and seals	857-40530
S5-AK-001	S4/S5 Strength member clamp bracket (no seals)	857-40531
LG-S3-3MM-14MM	S3 Loop through with gland plates, short clamp and seals	857-50232
LG-S5-3MM-14MM	S4/S5 Loop through with gland plates, clamp and seals	857-50233
MDS-S3 -24X5MM	S3 Multi-drop seal 24x5mm with seal plate	857-50234
MDS-S5-24X7MM	S4/S5 Multi-drop seal 24x7mm with seal plate	857-50235
MDSLP-S3-24X5MM	S3 Multi-drop seal 24x5mm with seal plate and lock plate	857-50236
S3-AK-DC-02	S3 Anchor Bracket for drop cables (set of 2)	857-41196
S5-AK-DC-02	S4/S5 Anchor Bracket for drop cables (set of 2)	857-41197