



Accessories

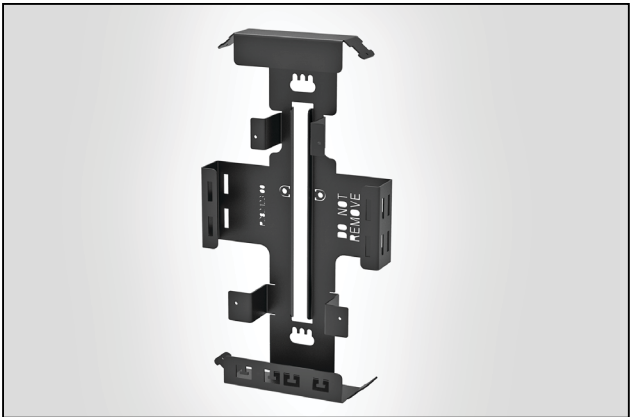
MB-FFE-PWB/BK-400MM Mounting Bracket

Application Information

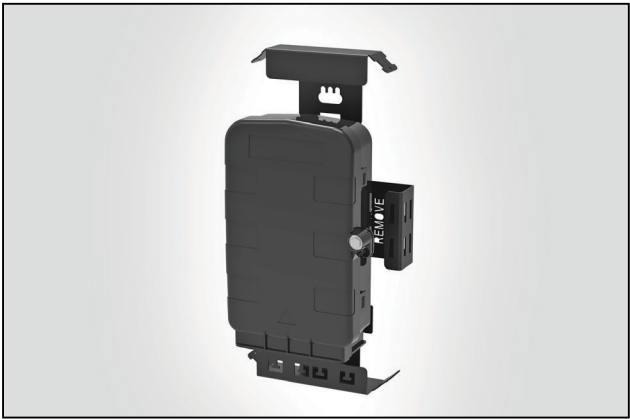
A pole mounting bracket for use with the Fibre Façade Enclosure (FFE). The bracket has been designed to provide secure anchoring for ultra lightweight cable and to manage up to 12 distribution drop fibres with a small footprint complying with CP08. The bracket holds up to 10m of cable with outer diameter of 7mm.

Technical Data

Dimensions (mm)	D	W	H
	48	186	346
Material	Grade 1.4003 Stainless Steel 1.5mm thick		
Colour	Black		

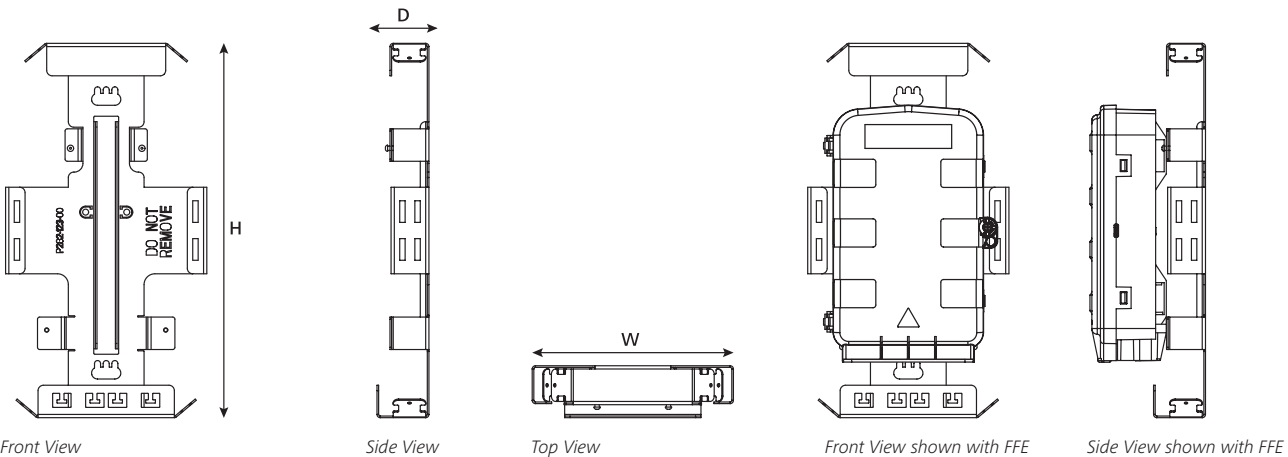


MB-FFE-PWB/BK-400MM Mounting Bracket



Wall Mounting Bracket with FFE.

Technical Diagrams

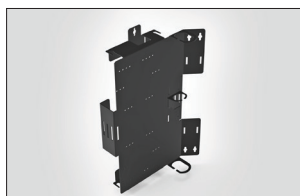




Mounting Bracket Comparison Chart

PART CODE	Outdoor	Indoor	Application		Product		Loop Storage	Colour	Unique Feature
			Pole	Facade / Wall	AFN	FFE			
Single Enclosure Brackets									
MB-AFN/FFE-PB001	✓	✓	✓	✗	✓	✓	✓	Black	- Fits 2 different enclosure sizes
MB-FFE-PWB/BK-400MM	✓	✓	✓	✓	✗	✓	✓	Black	- Loop storage on inside of bracket - Easier to use loop basket after installation - Short bracket complying with CP08
Multiple Enclosure Brackets									
MB-AFN-DUAL-BRKT requires 2 x MB-FFE-PWB/BK-400MM	✓	✗	✓	✗	✗	✓	✓	Black	- Fits 2 different enclosure sizes - Maximises space on the pole by holding 2 brackets - Easier to use inside loop baskets after installation
MB-AFN/FFE-V-BRKT-V2	✓	✗	✓	✗	✓	✓	✗		- Maximises space on the pole by holding 2 enclosures - Lightweight bracket

Associated Products See separate datasheets for more information.



MB-AFN/FFE-PB001

AFN/FFE pole mounting bracket.



MB-AFN/FFE-V-BRKT-V2

Lightweight 400mm V Bracket.



MB-AFN-DUAL-BRKT

Dual pole mounting bracket for 2 x MB-FFE-PWB/BK-400MM.