

Category 6A F/FTP Solid Core

RJ45C6A-xx.xM-S-LS/VI – EuroClass Cca and Dca

Application/Product Description

Category 6A Solid Core patch leads are high-performance Ethernet cables used for connecting network devices. They feature a solid copper core which provides better electrical conductivity compared to stranded cables, making them ideal for high-speed network installations.

The Cat6A specification provides bandwidth up to 500 MHz and supports data transfer rates of up to 10 Gbps whilst preventing crosstalk and interference, ensuring reliable data transmission. The solid core construction makes them durable and long-lasting, suitable for both permanent and temporary installations.

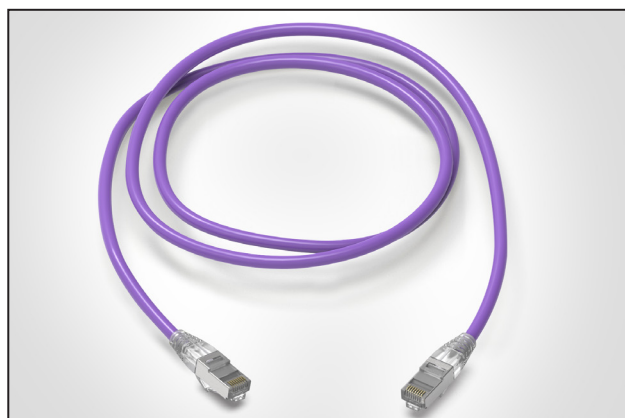
Cat6A solid core patch leads are also compatible with Power over Ethernet (PoE) technology, allowing the delivery of both power and data to network devices through a single cable. Cat6A Solid Core patch leads are an ideal choice for data centres, enterprise networks, and other demanding network applications.

HellermannTyton Connectivity's solid core leads are made to order in our Northampton factory. They can be produced to your specified length using our UKCA / CE approved F/FTP cable in either Cca or Dca euro class cable.

These cables form part of our 25 year system performance warranty when installed and tested as part of a HellermannTyton Category 6A system by an approved Installation partner.

Features and Benefits

- Exceeds Category 6A performance
- Uncompromised support of 10G Ethernet
- Shielding eliminates alien crosstalk
- Made to Order in our Northampton Factory
- Lengths to your specification
- Supported by UKCA / CE and ETL listed cable
- Supports PoE Type 4 - 100 watt
- Cca or Dca cable variants
- F/FTP Shielded Construction



Category 6A F/FTP Solid Core Patch Lead.

Applicable Standards

- ISO/IEC 11801-1:2017 / ISO/IEC 11801-2:2017
- IEC 61156-5:2020
- EN 50173-1:2018 / EN 50173-2:2018
- EN 50288-10-1:2012
- TIA-568.2D:2018
- IEC 60332-1-1:2015 / IEC 60332-1-2:2015
- IEC 60754-2:2019
- IEC 61034-1:2019 / IEC 61034-2:2019
- IEEE 802.3af/at/bt PoE Type 1, 2, 3, 4
- Cisco UPOE, UPOE+
- Power over HDBase™ PoH



POE++ Type 4
Compatible.

Performance Characteristics

Frequency (MHz)		4	250	500
NEXT (dB)	Spec	75	59.3	54.8
	Typical	100.00	91.4	86.9
Return Loss (dB)	Spec	23.0	17.3	17.3
	Typical	28.0	22.3	22.3

*Typical values based on a 2m patch lead.

Ø 1.32mm

Ø 7.5mm

Sheath

Outer Foil

Drain Wire

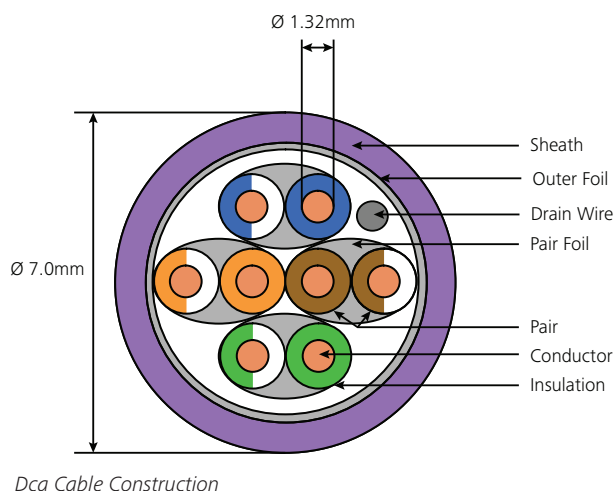
Pair Foil

Pair

Conductor

Insulation

Cca Cable Construction



Characteristics	Specification
AWG	23
Outer Diameter	7.5mm (Cca) / 7.0mm (Dca)
Overall / Pair Screening	F/FTP – Aluminium/Polyester Tape
NVP (Nominal Velocity of Propagation)	82%
Segregation Classification - EN50174-2	C
Temp. Installation	0°C to +50°C
Temp. Operation	-20°C to +70°C
Min. Bend Radius - Installation	8 x OD
Min. Bend Radius - Operation	4 x OD
Length Tolerance	+/- 2%
Approximate weight (metre)	0.07kg P/M