



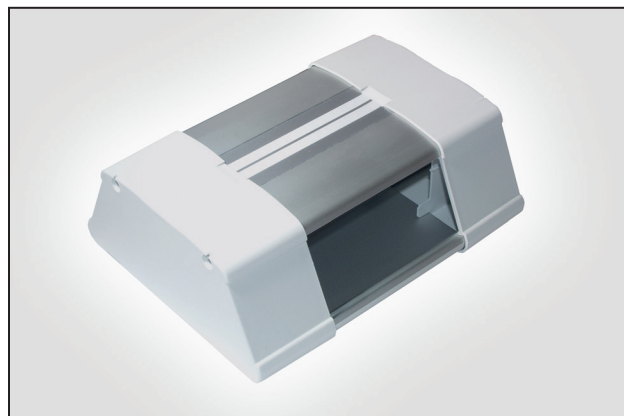
## Sub Floor Box

### Euro Module and LJ6C Adaptors

#### Application/Product Description

The sub floor box can accommodate up to 4 triple or 8 single Euro Module outlets or a mixture of both.

Manufactured from aluminium the sub floor box has cable entry points at both ends which accept a maximum cable diameter of 25mm.



Sub Floor Box

#### Technical Data

Part Code	AS08/12ESFB			
Dimensions (mm)	H	W	D	
	70.0	160.0	205.0	
No of Outlets	Triple	Single	6C Adaptor*	
	4	8	4	
			6C	6C Angled
			8	8
Cable Entry Port	2			
Weight (kg)	480			
Materials	Aluminium / ABS White			