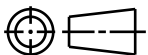


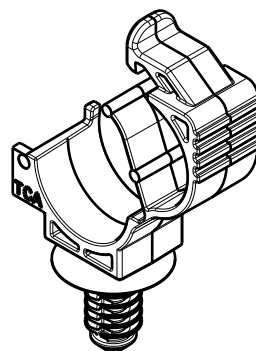
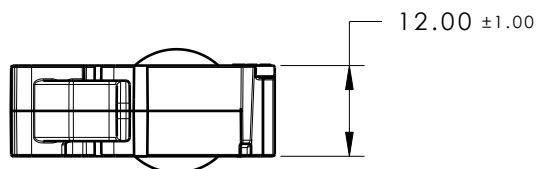
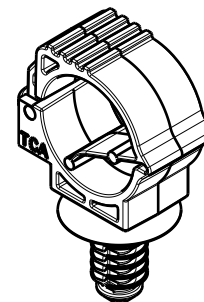
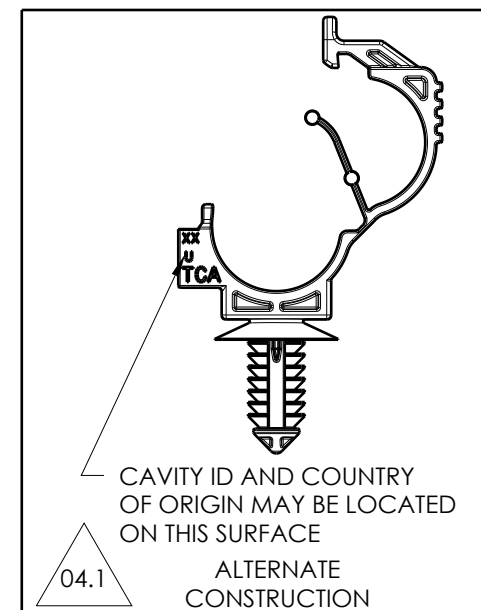
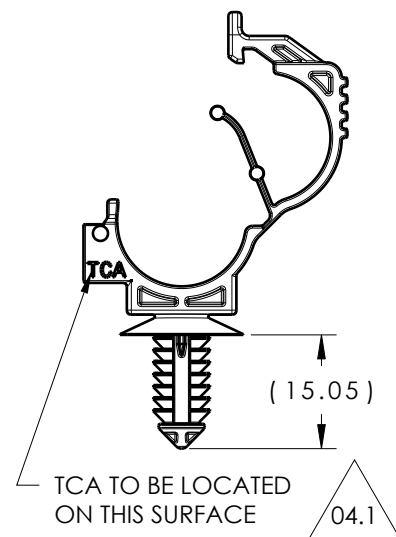
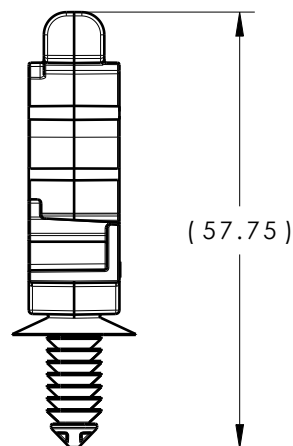
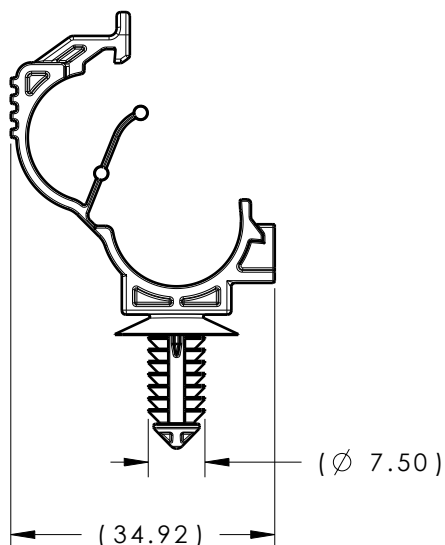
CATIA V5



REFERENCE:

PERFORMANCE REQUIREMENTS:

1. CIRCULAR HOLE DIAMETER RANGE: 6.1 TO 7.0mm
2. APPLICABLE HEX HOLE: 6.35mm +/- 0.25mm
3. PANEL THICKNESS RANGE: 0.6 TO 8.25mm

ISOMETRIC VIEW
OPEN POSITIONISOMETRIC VIEW
CLOSED POSITION

GLOBAL PART DESCRIPTION

LOC10-14FT6LG-PA66HIRHSUV-BK

MATERIAL

PA66HIRHSUV

COLOR

BLACK

LOC10-14FT6LG-PA46-GY

PA46

GRAY

Material
SEE CHART
COLOR: SEE CHART

Units millimeters

Tolerance defined on
each dimension

The copyright of this
drawing is reserved by
HellermannTyton. It is
issued on condition that it is
not reproduced, copied or
disclosed to a third party,
either wholly or in part,
without the consent of
HellermannTyton.

Drawn KVH 9/28/12
Approved SJA 10/10/12

HellermannTyton

North America
Email: corp@htamericas.com
Web: www.hellermann.tyton.com

Article/Type-No LOC10-14FT6LG

Scale 1:1

Title
LOCKING OMEGA CLIP WITH FIR TREE
(10 TO 14mm BUNDLE)

Project Number
11-0594

Drawing-No PRODUCTION : Phase

Format AH

11-0594-011-CSU

Sheet 1/1