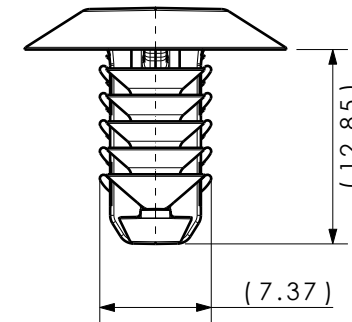
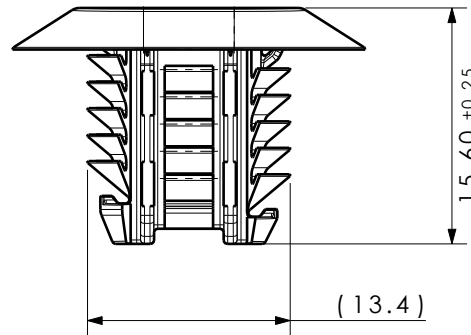




ISOMETRIC VIEW
SCALE 2:1



- REFERENCE:
PERFORMANCE REQUIREMENTS AT DRY AS MOLDED:
1. FIR TREE PUSH IN FORCE: REF. 10 LBS MAX IN EACH APPLICABLE OVAL HOLE SIZE AND A PLATE THICKNESS OF 1.8mm
2. FIR TREE PULL OUT FORCE: REF. 25 LBS MIN IN EACH APPLICABLE OVAL HOLE SIZE AND A PLATE THICKNESS OF 1.8mm
3. SHEET METAL THICKNESS RANGE: 0.60mm - 6.0mm
4. APPLICABLE OVAL HOLE SIZES:
A. 6.2 X 12.2mm
B. 6.5 x 12.5mm
C. 6.5 x 13.0mm
D. 7.0 x 12.0mm

Revision Level			Revision Record		 		Drawn	Date (YYYY/MM/DD)					
Drawing	State	Part	Drawing dimension update				The copyright of this drawing is reserved by HellermannTyton.	Josh.Liu					2020/02/19
01.1	Design Release						All drawing revisions are stored in CAD PDM database	Approved	Date (YYYY/MM/DD)	Kevin.Tang	2020/02/19	PLUGFTOVAL	
Changed	Date (YYYY/MM/DD)				<th colspan="1"><th colspan="1"><th colspan="1"><th colspan="2">Drawing-No</th><th colspan="2">Format A4</th></th></th></th>	<th colspan="1"><th colspan="1"><th colspan="2">Drawing-No</th><th colspan="2">Format A4</th></th></th>		<th colspan="1"><th colspan="2">Drawing-No</th><th colspan="2">Format A4</th></th>	<th colspan="2">Drawing-No</th> <th colspan="2">Format A4</th>	Drawing-No		Format A4	
Madere.Ni	2023/11/06				<th colspan="1"><th colspan="1"><th colspan="1"><th colspan="2">11-0746-001-CSC</th><th colspan="2">Sheet 1 / 1</th></th></th></th>	<th colspan="1"><th colspan="1"><th colspan="2">11-0746-001-CSC</th><th colspan="2">Sheet 1 / 1</th></th></th>		<th colspan="1"><th colspan="2">11-0746-001-CSC</th><th colspan="2">Sheet 1 / 1</th></th>	<th colspan="2">11-0746-001-CSC</th> <th colspan="2">Sheet 1 / 1</th>	11-0746-001-CSC		Sheet 1 / 1	
Approved	Date (YYYY/MM/DD)												
Roger.Chang	2023/11/06												