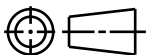
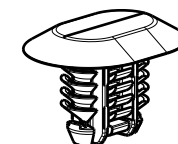
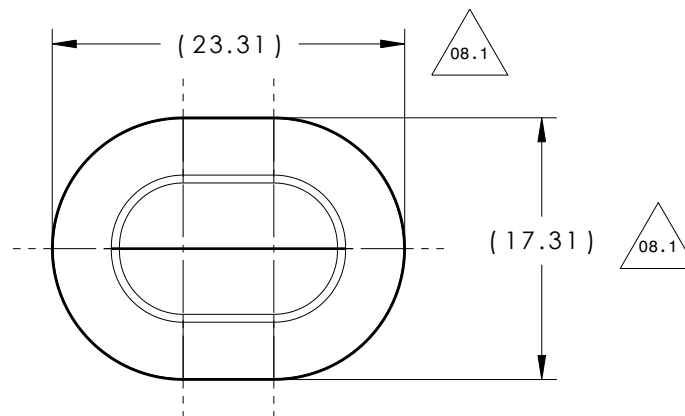
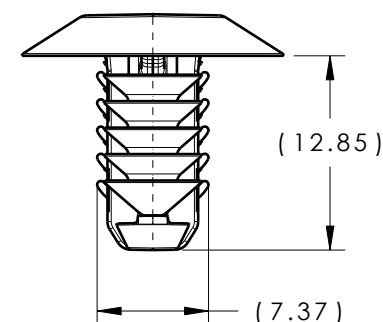
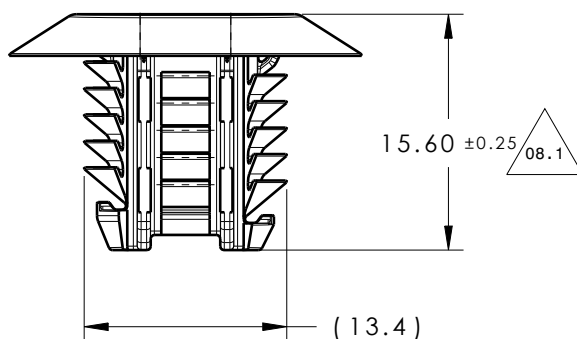


CATIA V5



Revision Level			Revision Record	Changed	Date	Approved	Date
Drawing	State	Part					
08.1	Design Release	B	SEE ECN# 016483	JMC	05/12/21	CJR	05/12/21

ISOMETRIC VIEW
SCALE 1:1

REFERENCE:

PERFORMANCE REQUIREMENTS AT DRY AS MOLDED:

1. FIR TREE PUSH IN FORCE: REF. 10 LBS MAX IN EACH APPLICABLE OVAL HOLE SIZE AND A PLATE THICKNESS OF 1.8mm
2. FIR TREE PULL OUT FORCE: REF. 25 LBS MIN IN EACH APPLICABLE OVAL HOLE SIZE AND A PLATE THICKNESS OF 1.8mm
3. SHEET METAL THICKNESS RANGE: 0.60mm - 6.0mm
4. APPLICABLE OVAL HOLE SIZES:

- A. 6.2 X 12.2mm
- B. 6.5 x 12.5mm
- C. 6.5 x 13.0mm
- D. 7.0 x 12.0mm



Global Part Description	Material	Color
PLUGFTOVAL-PA66HIRHSUV-BK	PA66HIRHSUV	Black

Material SEE CHART COLOR: SEE CHART	Units millimeters	The copyright of this drawing is reserved by HellermannTyton. It is issued on condition that it is not reproduced, copied or disclosed to a third party, either wholly or in part, without the consent of HellermannTyton.	Drawn	SJA	10/07/11	Article/Type-No	PLUGFTOVAL	Scale	2:1
	Tolerance defined on each dimension		Approved	PT	10/08/11	Title	OVAL FIR TREE PLUG	Project Number	
			HellermannTyton North America Email: corp@htamericas.com Web: www.hellermann.tyton.com					11-0746	
						Drawing-No	PRODUCTION : Phase		Format
						11-0746-001-CSU		Sheet	1/1