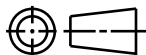


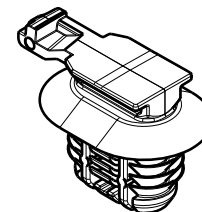
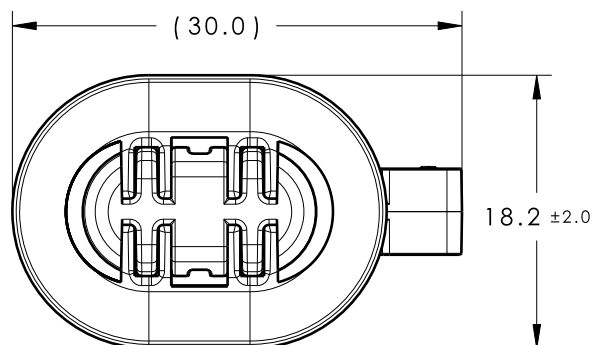
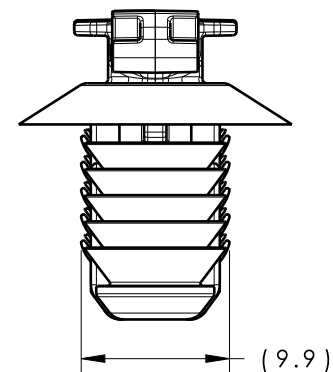
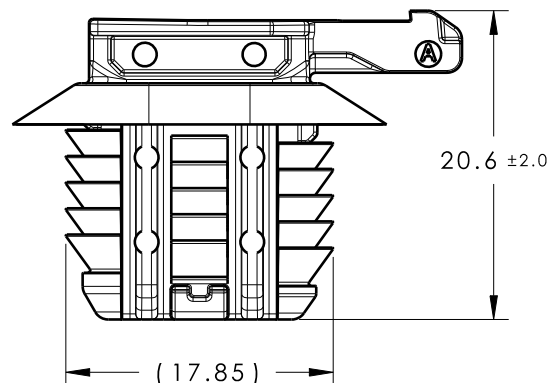
CATIA V5



## REFERENCE:

PERFORMANCE REQUIREMENTS AT DRY AS MOLDED:

1. FIR TREE PUSH IN FORCE: 10 lbs MAX IN AN OVAL HOLE THAT IS 9.0mm X 17.0mm AND A SHEET METAL THICKNESS OF 1.8mm .
2. FIR TREE PULL OUT FORCE: 35 lbs MIN IN AN OVAL HOLE THAT IS 9.0mm X 17.0mm AND A SHEET METAL THICKNESS OF 1.8mm
3. SHEET METAL THICKNESS RANGE: 0.60mm - 6.50mm
4. APPLICABLE OVAL HOLE SIZES:
  - A. 9.0 X 16.0mm
  - B. 9.0 X 17.0mm

Isometric View  
Scale 1:1

Material

PA66HIRHSUV  
COLOR: BLACK

05

Units millimeters

Tolerance defined on  
each dimension

The copyright of this drawing is reserved by HellermannTyton. It is issued on condition that it is not reproduced, copied or disclosed to a third party, either wholly or in part, without the consent of HellermannTyton.

Drawn

SJA

8/24/12

Approved

KVH

8/27/12

**HellermannTyton**

North America  
Email: corp@htamericas.com  
Web: www.hellermann.tyton.com

Article/Type-No

CC11

Title

9X16 AND 9X17 OVAL HOLE CONNECTOR  
CLIP

Drawing-No

**12-0304-001-CSU**

PRODUCTION : Phase

Scale

2:1

Project Number

12-0304

Format

AH

Sheet

1/1