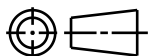


CATIA V5



Revision Level

Revision Record

Changed

Date

Approved

Date

Drawing

Part

03.1

A

SEE ECN# 311348

SAR

07/19/24

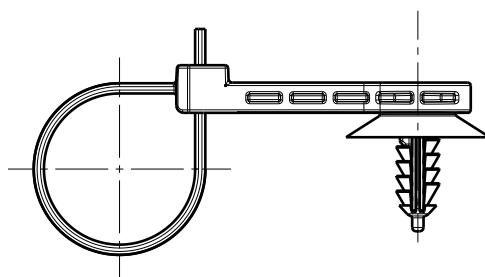
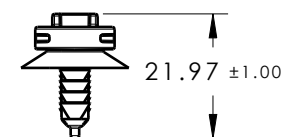
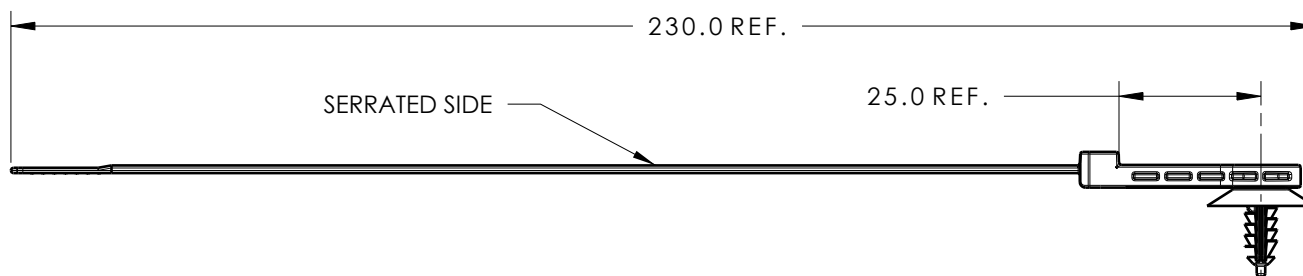
EJH

07/19/24

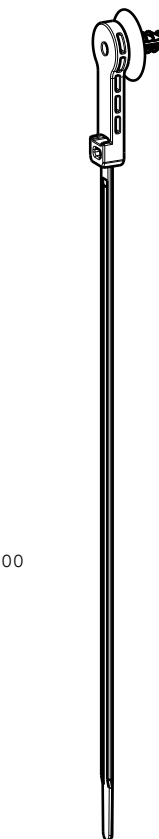
REFERENCE:

PERFORMANCE REQUIREMENTS:

1. FIR TREE PUSH IN FORCE: 10 lbs MAX IN A M6 THREADED HOLE
2. FIR TREE PULL OUT FORCE: 25 lbs MIN IN A M6 THREADED HOLE
3. HOLE DIAMETER: M6 THREADED HOLE
4. PANEL THICKNESS RANGE: 0.6 TO 5.5mm
5. CABLE TIE TENSILE STRENGTH: 50 lbs MIN
6. BUNDLE RANGE: 1.6mm TO 50mm



ASSEMBLY VIEW
SCALE 1:1



ISOMETRIC VIEW
SCALE 1:2

Material

PA66HIRHSUV
COLOR: BLACK



Units

millimeters

Tolerance defined on
each dimension

The copyright of this
drawing is reserved by
HellermannTyton. It is
issued on condition that it is
not reproduced, copied or
disclosed to a third party,
either wholly or in part,
without the consent of
HellermannTyton.

Drawn

MHT

11/21/12

Approved

KVH

11/21/12

HellermannTyton

North America
Email: corp@htamericas.com
Web: www.hellermann.tyton.com

Article/Type-No

T50ROSFTM6SO25B

Title

T50ROS WITH 25mm OFFSET AND M6 FIR
TREE (B-SERIES)

Drawing-No

12-0672-001-CSU

PRODUCTION : Phase

Scale 3:4

Project Number

12-0672

Format

AH

Sheet

1/1