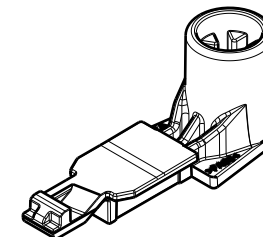
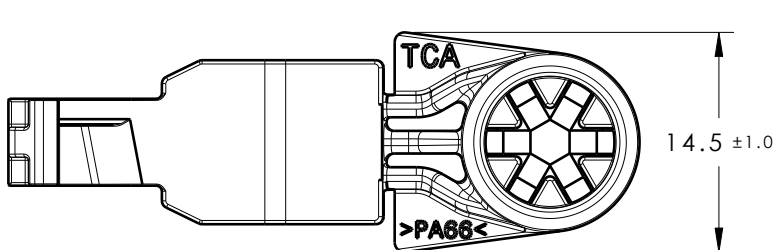


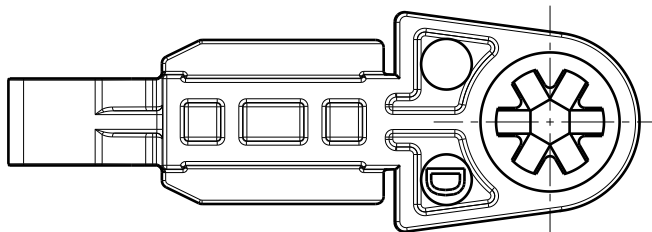
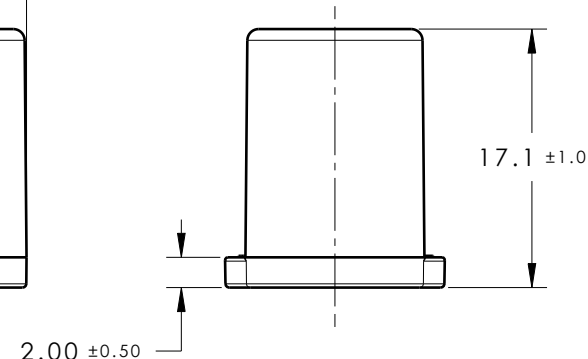
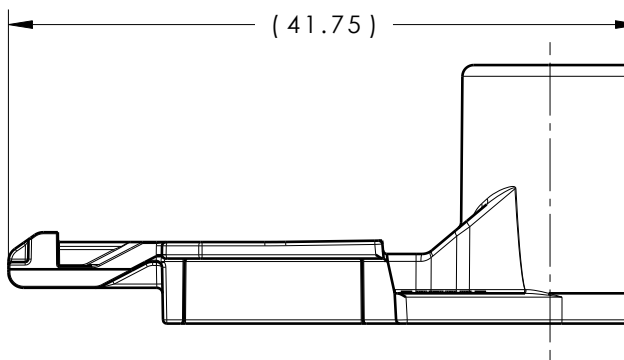
CATIA V5



Revision Level			Revision Record	Changed	Date	Approved	Date
Drawing	State	Part					
06.1	Design Release	D	SEE ECN# 311348	SAR	07/22/24	EJH	07/22/24



ISOMETRIC VIEW
SCALE 1:1



REFERENCE:

PERFORMANCE REQUIREMENTS AT DRY AS MOLDED:

1. STUD MOUNT PUSH ON FORCE: 45 NEWTONS (10 LBS) MAX ON EACH APPLICABLE STUD SIZE
2. STUD MOUNT PULL OFF FORCE: 110 NEWTONS (25 LBS) MIN ON EACH APPLICABLE STUD SIZE
3. APPLICABLE STUD SIZE:
 - A. M5
 - B. T5
4. DESIGNED TO MEET PUSH ON/PULL OFF FORCES OF SAE/USCAR-2
5. FITS INTO USCAR CLIP SLOT SPECIFICATION EWCAP-005-11 (NOT A TEST SPEC.)

Material
PA66HIRHSUV
COLOR: BLACK



Units millimeters

Tolerance defined on
each dimension

The copyright of this drawing is reserved by HellermannTyton. It is issued on condition that it is not reproduced, copied or disclosed to a third party, either wholly or in part, without the consent of HellermannTyton.

Drawn KVH 3/13/13
Approved SJA 9/4/13

HellermannTyton

North America
Email: corp@htamericas.com
Web: www.hellermann.tyton.com

Article/Type-No SB5CC

Title
5mm STUD MOUNT WITH CONNECTOR
CLIP

Drawing-No PRODUCTION : Phase

13-0237-001-CSU

Scale 2:1

Project Number
13-0237

Format AH

Sheet 1/1