

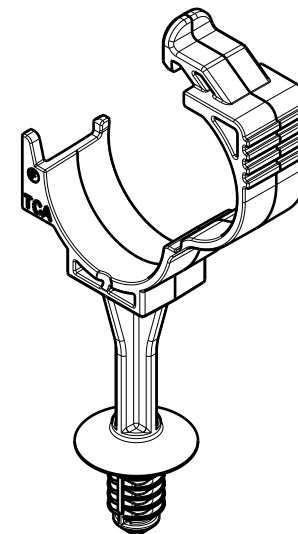
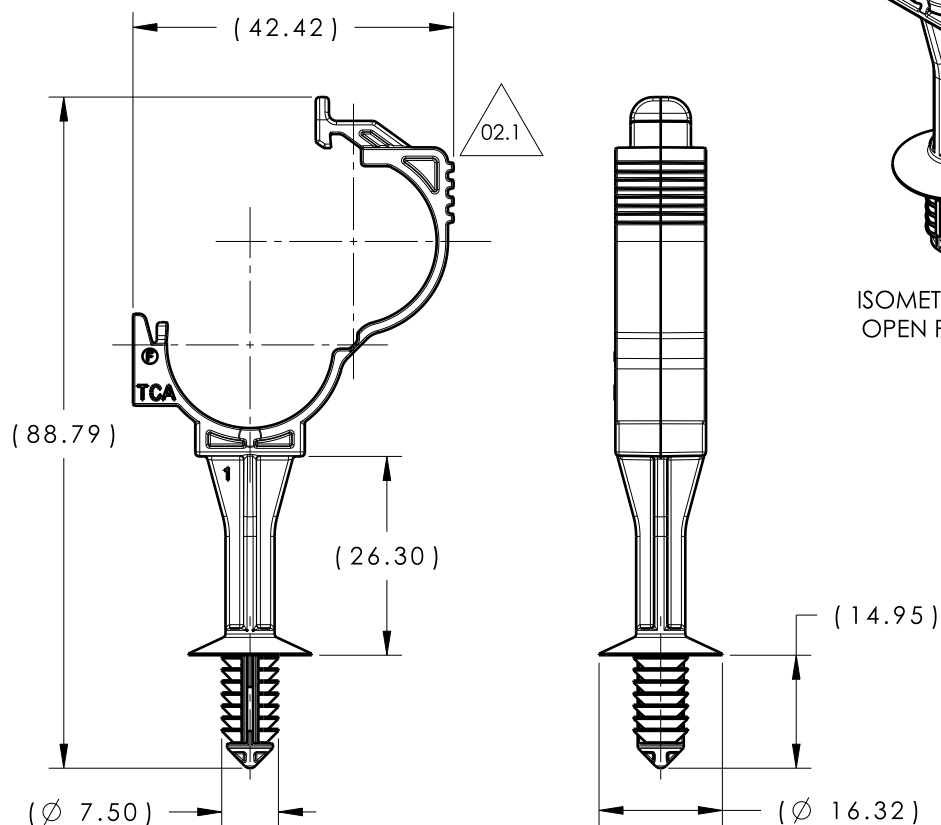
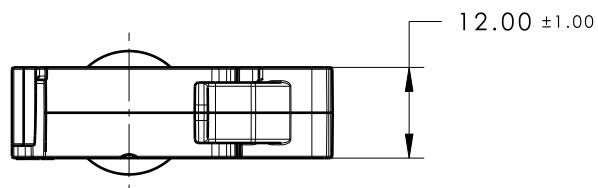
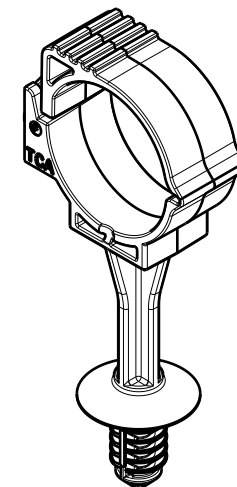
CATIA V5



REFERENCE:

PERFORMANCE REQUIREMENTS AT DRY AS MOLDED:

1. FIR TREE PUSH IN FORCE: 45 NEWTONS (10 LBS) MAX IN THE APPLICABLE NOMINAL HOLE SIZE AND A PLATE THICKNESS OF 1.8mm.
2. FIR TREE PULL OUT FORCE: 110 NEWTONS (25 LBS) MIN IN THE APPLICABLE NOMINAL HOLE SIZE AND A PLATE THICKNESS OF 1.8mm.
3. SHEET METAL THICKNESS RANGE: 0.60mm - 8.25mm
4. APPLICABLE HOLE SIZE:
 - A. 6.5mm +/- 0.4
 - B. 6.35mm +/- 0.25 HEX

ISOMETRIC VIEW
OPEN POSITIONISOMETRIC VIEW
CLOSED POSITION

Material
PA66HIRHS
COLOR: BLACK

Units millimeters

Tolerance defined on
each dimension

The copyright of this drawing is reserved by HellermannTyton. It is issued on condition that it is not reproduced, copied or disclosed to a third party, either wholly or in part, without the consent of HellermannTyton.

Drawn KVH 7/11/13

Approved EJH 12/18/13

HellermannTyton

North America
Email: corp@htamericas.com
Web: www.hellermann.tyton.com

Article/Type-No LOC15-19FT6LGSO

Title 26mm STAND OFF LOCKING OMEGA CLIP
(15 TO 19mm BUNDLE) WITH FT6 FIR
TREE

Drawing-No PRODUCTION : Phase

13-0558-011-CSU

Scale 1:1

Project Number
13-0558

Format AH

Sheet 1/1