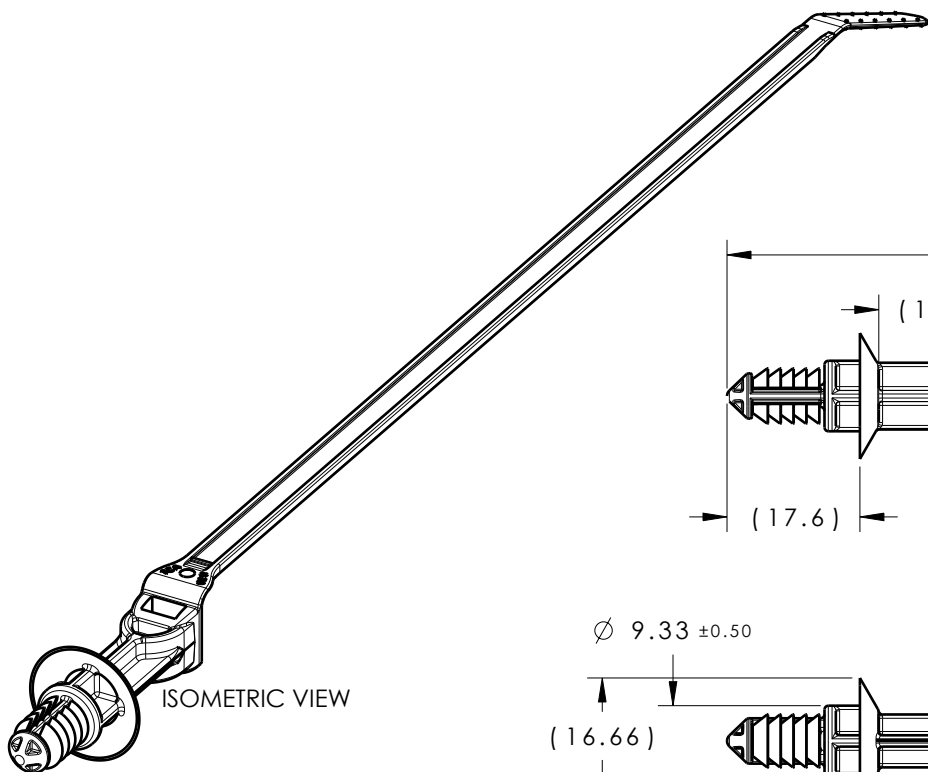


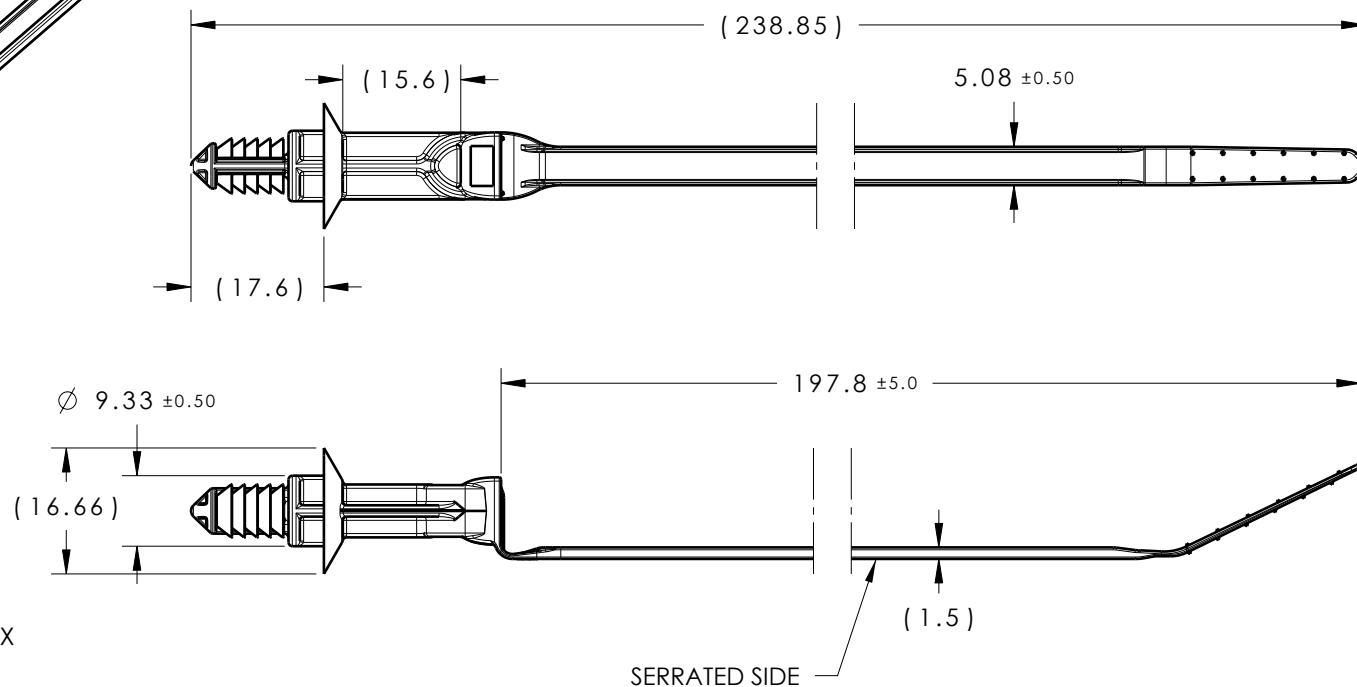
CATIA V5



Revision Level			Revision Record	Changed	Date	Approved	Date
Drawing	State	Part					
02.1	Design Release	A	SEE ECN# 311356	SAR	07/22/24	EJH	07/22/24



ISOMETRIC VIEW



## REFERENCE:

## PERFORMANCE REQUIREMENTS AT DRY AS MOLDED:

1. FIR TREE PUSH IN FORCE: 45 NEWTONS (10 LBS) MAX IN THE APPLICABLE NOMINAL HOLE SIZE AND A PLATE THICKNESS OF 1.8mm.
2. FIR TREE PULL OUT FORCE: 110 NEWTONS (25 LBS) MIN IN THE APPLICABLE NOMINAL HOLE SIZE AND A PLATE THICKNESS OF 1.8mm.
3. SHEET METAL THICKNESS RANGE: 0.60mm - 5.0mm
4. APPLICABLE HOLE SIZE:  
A. 6.5mm +/- 0.4
5. CABLE TIE TENSILE STRENGTH: 225 NEWTONS (50 LBS)
6. BUNDLE RANGE: 5.0mm TO 50mm

Material PA66HIRHSUV COLOR: BLACK	Units <b>millimeters</b>	The copyright of this drawing is reserved by HellermannTyton. It is issued on condition that it is not reproduced, copied or disclosed to a third party, either wholly or in part, without the consent of HellermannTyton.	Drawn	CJR	8/30/13	Article/Type-No	T50ROSFT612.5SOVC	Scale	1:1
			Approved	KVH	9/4/13	Title	FT6.5 WITH OFFSET CABLE TIE	Project Number	13-0574
			<b>HellermannTyton</b> North America Email: corp@htamericas.com Web: www.hellermann.tyton.com			Drawing-No	PRODUCTION : Phase	Format	AH
						13-0574-001-CSU		Sheet	1/1

02.1

Tolerance defined on each dimension