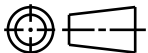
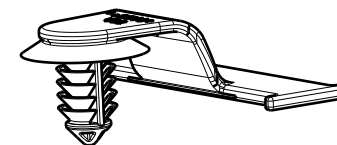
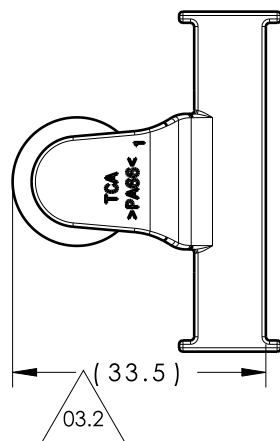


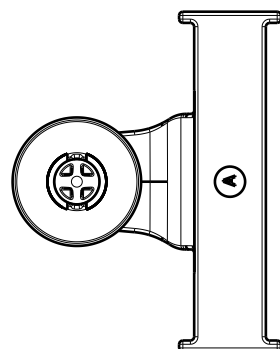
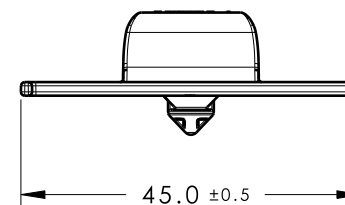
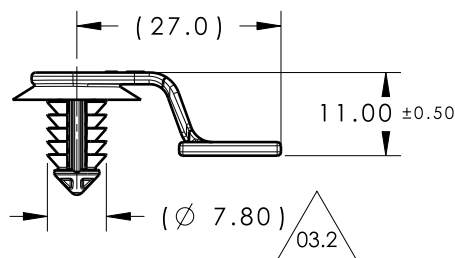
CATIA V5



Revision Level			Revision Record	Changed	Date	Approved	Date
Drawing	State	Part					
03.2	Design Release		SEE ECN# 014291	CJR	1/31/18	SJA	1/31/18



ISOMETRIC VIEW



REFERENCE:

PERFORMANCE REQUIREMENTS AT DRY AS MOLDED:

1. FIR TREE PUSH IN FORCE: 45 NEWTONS (10 LBS) MAX IN THE APPLICABLE NOMINAL HOLE SIZE AND A PLATE THICKNESS OF 1.8mm.
2. FIR TREE PULL OUT FORCE: 110 NEWTONS (25 LBS) MIN IN THE APPLICABLE NOMINAL HOLE SIZE AND A PLATE THICKNESS OF 1.8mm.
3. SHEET METAL THICKNESS RANGE: 0.60mm - 6.00mm
4. APPLICABLE HOLE SIZE:
A. 6.5mm +/- 0.4

Material PA66HIRHS COLOR: NATURAL	Units millimeters Tolerance defined on each dimension	The copyright of this drawing is reserved by HellermannTyton. It is issued on condition that it is not reproduced, copied or disclosed to a third party, either wholly or in part, without the consent of HellermannTyton.	Drawn	CJR	10/08/13	Article/Type-No	SOC14FT6	Scale	1:1
			Approved	SJA	10/08/13	Title	FT6.5 WITH TAPE BAR	Project Number	13-0588
			HellermannTyton North America Email: corp@htamericas.com Web: www.hellermann.tyton.com			Drawing-No	PRODUCTION : Phase	Format	AH
						13-0588-001-CSU		Sheet	1/1