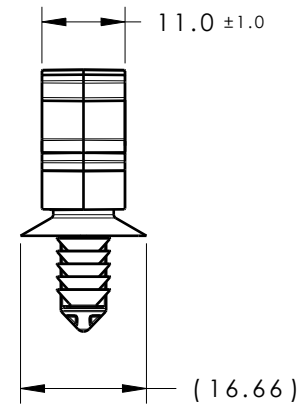
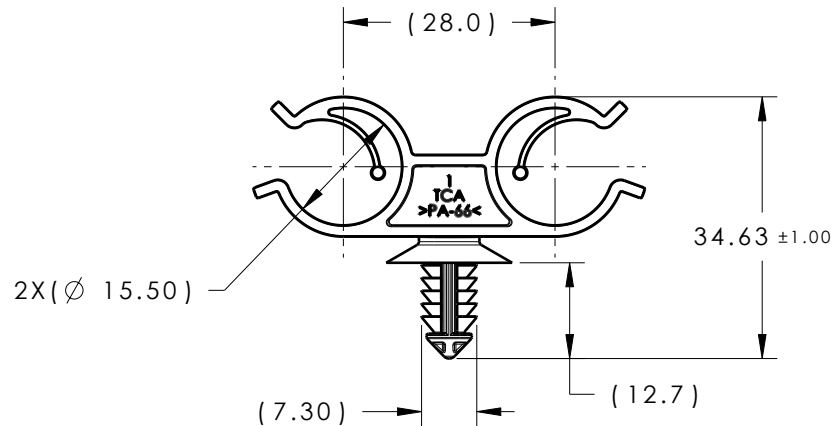
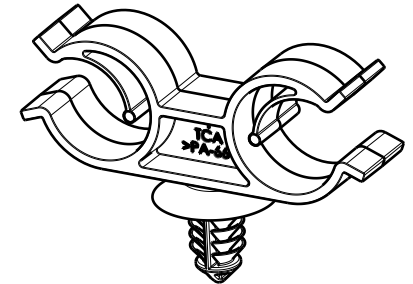
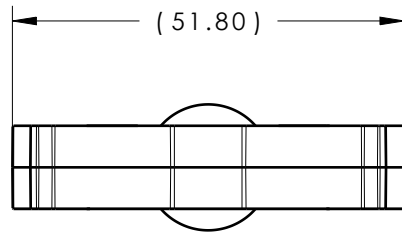


CATIA V5



Revision Level			Revision Record	Changed	Date	Approved	Date
Drawing	State	Part					
01.1	Design Release	A	SEE ECN# 311356	SAR	07/22/24	EJH	07/22/24



REFERENCE:

PERFORMANCE REQUIREMENTS AT DRY AS MOLDED:

1. FIR TREE PUSH IN FORCE: 45 NEWTONS (10 LBS) MAX
IN THE APPLICABLE NOMINAL HOLE SIZE AND A
PLATE THICKNESS OF 1.8mm.
2. FIR TREE PULL OUT FORCE: 110 NEWTONS (25 LBS) MIN
IN THE APPLICABLE NOMINAL HOLE SIZE AND A
PLATE THICKNESS OF 1.8mm.
3. SHEET METAL THICKNESS RANGE: 0.60mm - 6.0mm
4. APPLICABLE HOLE SIZE: 6.5mm +/- 0.4
5. APPLICABLE HOSE/TUBE RANGE: 12.0mm - 15.0mm

Material
PA66HIRHSUV
COLOR: BLACK



Units millimeters

Tolerance defined on
each dimension

The copyright of this
drawing is reserved by
HellermannTyton. It is
issued on condition that it is
not reproduced, copied or
disclosed to a third party,
either wholly or in part,
without the consent of
HellermannTyton.

Drawn EJH 12/5/13
Approved SJA 8/21/14

HellermannTyton

North America
Email: corp@htamericas.com
Web: www.hellermann.tyton.com

Article/Type-No DUALFT6DOCK

Title
DUAL HARNESS CLIP - 6.5MM FIR TREE

Drawing-No PRODUCTION : Phase

13-0594-021-CSU

Scale 1:1

Project Number
13-0594

Format AH

Sheet 1/1