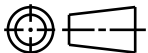
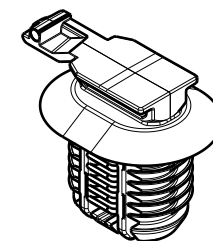
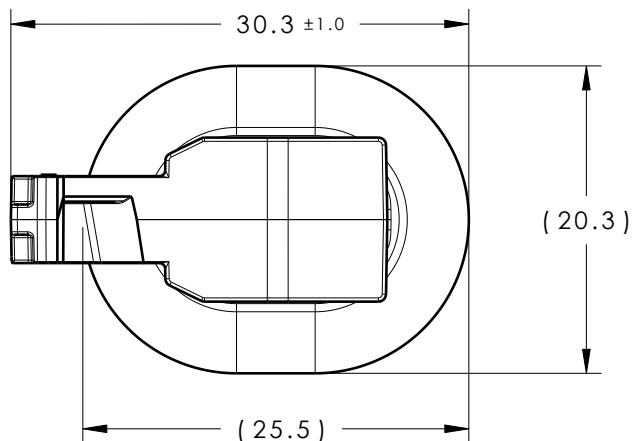


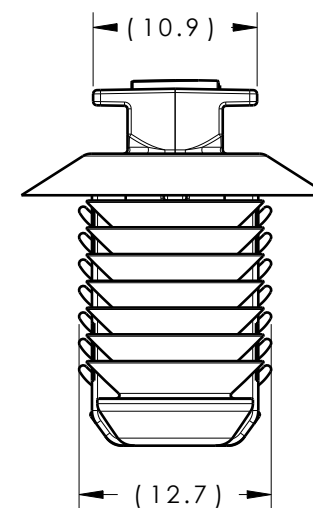
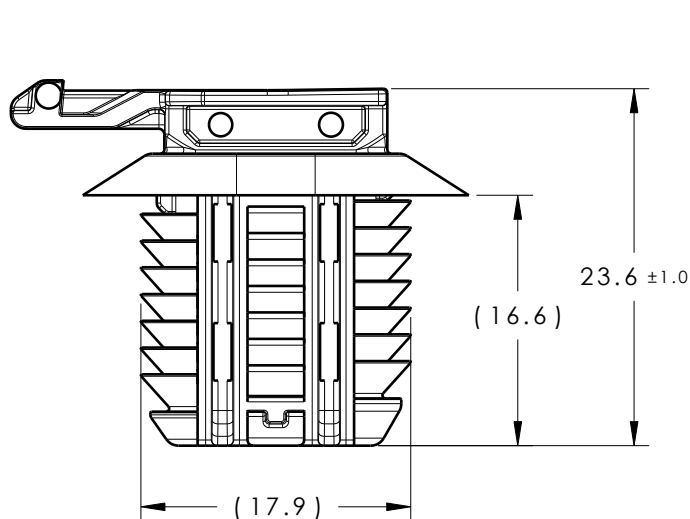
CATIA V5



Revision Level			Revision Record	Changed	Date	Approved	Date
Drawing	State	Part					
05.1	Design Release	A	SEE ECN# 311356	SAR	07/23/24	EJH	07/23/24



ISOMETRIC VIEW  
(SCALE 1:1)



#### REFERENCE:

PERFORMANCE REQUIREMENTS AT DRY AS MOLDED:

1. FIR TREE PUSH IN FORCE: 45 NEWTONS (10 LBS) MAX IN EACH APPLICABLE NOMINAL OVAL HOLE SIZE AND A PLATE THICKNESS OF 1.8mm.
2. FIR TREE PULL OUT FORCE: 110 NEWTONS (25 LBS) MIN IN EACH APPLICABLE NOMINAL OVAL HOLE SIZE AND A PLATE THICKNESS OF 1.8mm.
3. SHEET METAL THICKNESS RANGE: 0.60mm - 9.00mm
4. APPLICABLE OVAL HOLE SIZES:  
A. 12.0 X 17.0mm +/- 0.4
5. DESIGNED TO MEET PUSH ON/ PULL OFF FORCES OF SAE/USCAR-2
6. FITS INTO USCAR CLIP SLOT SPECIFICATION EWCAP-005-11 (NOT A TEST SPEC.)

Material PA66HIRHSUV COLOR: BLACK	<div><div></div><div>05.1</div></div>	Units millimeters  Tolerance defined on each dimension	The copyright of this drawing is reserved by HellermannTyton. It is issued on condition that it is not reproduced, copied or disclosed to a third party, either wholly or in part, without the consent of HellermannTyton.	Drawn	SJA	12/5/13	Article/Type-No	CC15	Scale	2:1
				Approved	EJH	12/5/13	Title	12.0 x 17.0MM OVAL FIR TREE WITH EWCAP-005-11 CONNECTOR CLIP	Project Number	13-1063
				<div>HellermannTyton</div> <div>North America Email: corp@htamericas.com Web: www.hellermann.tyton.com</div>			Drawing-No	PRODUCTION : Phase	Format	AH
							13-1063-001-CSU		Sheet	1/1