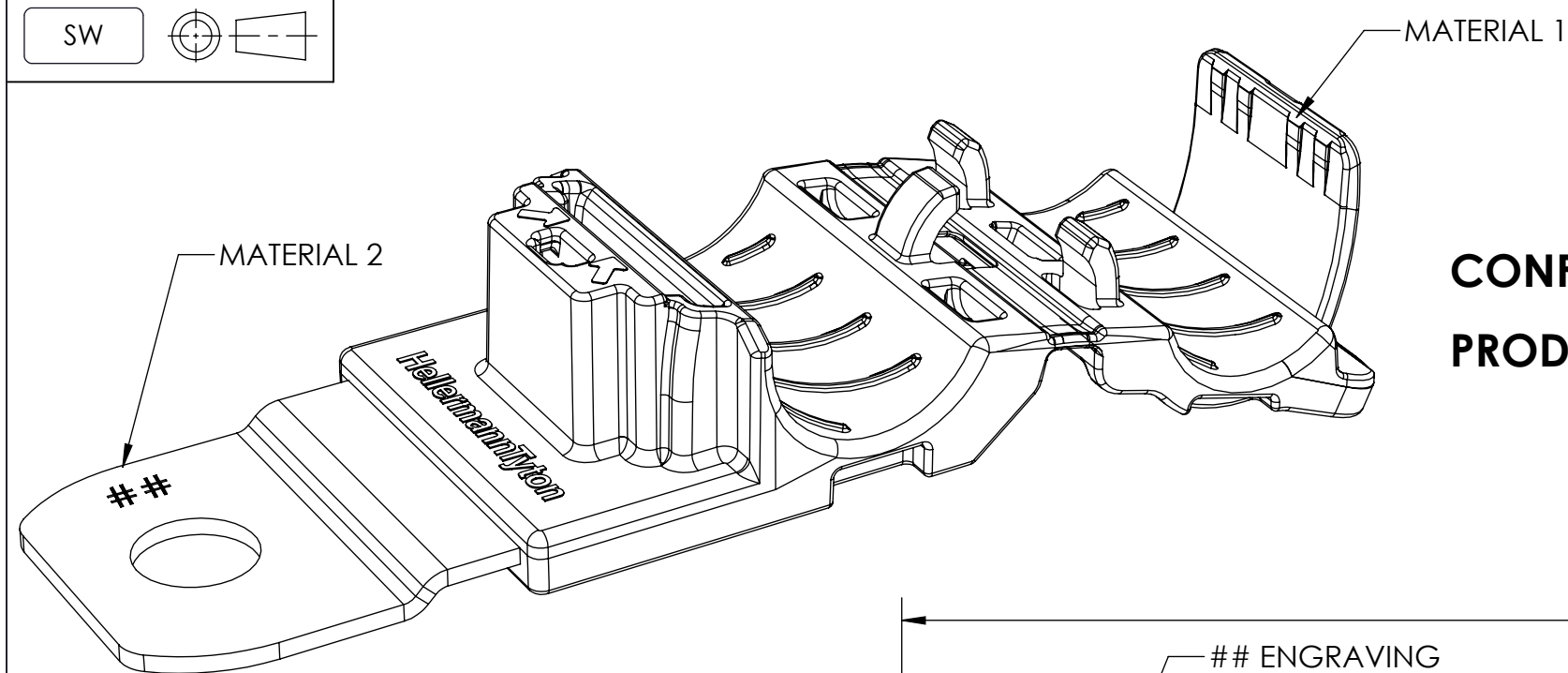
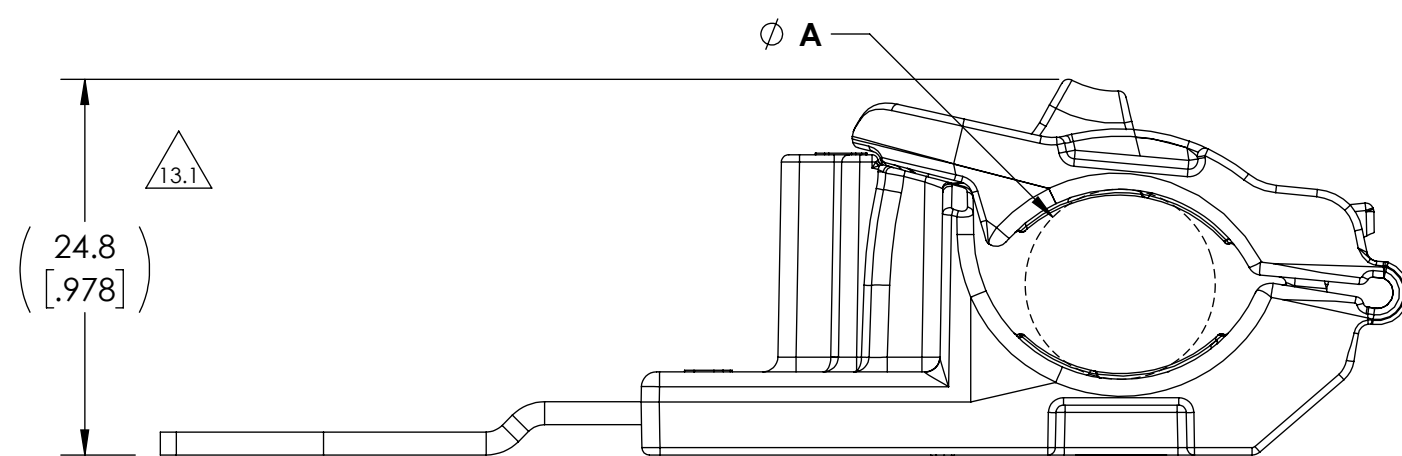
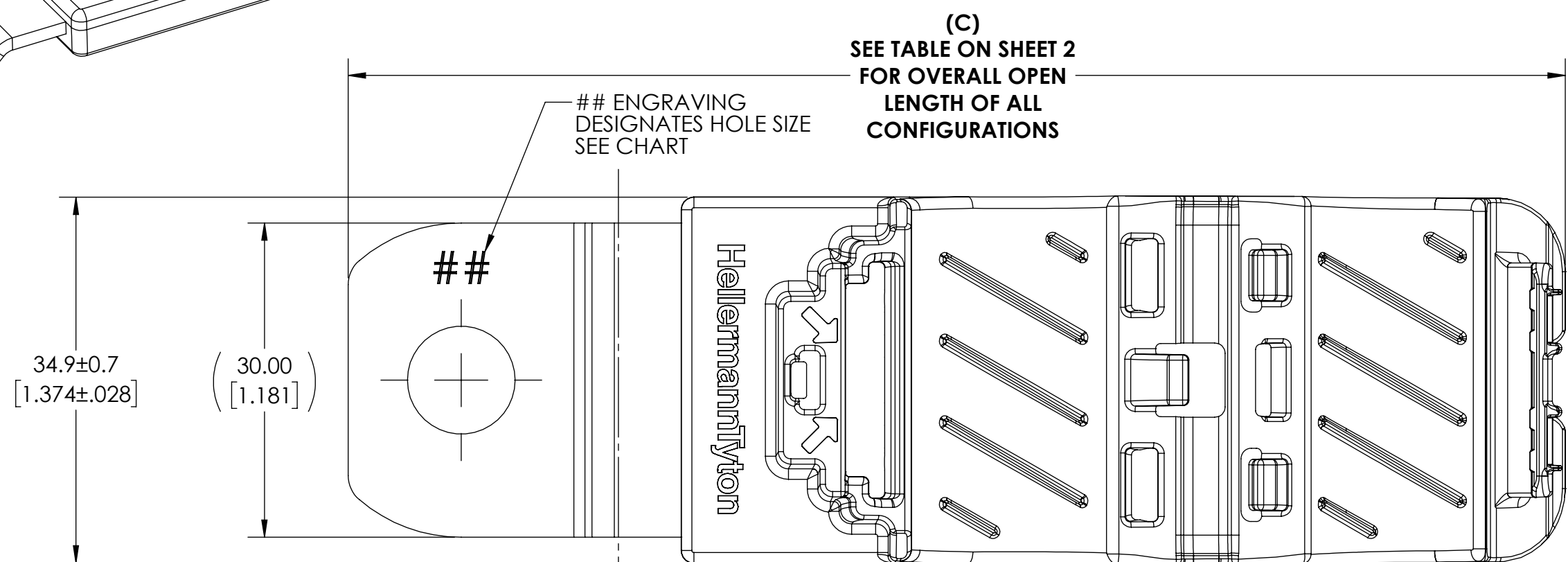


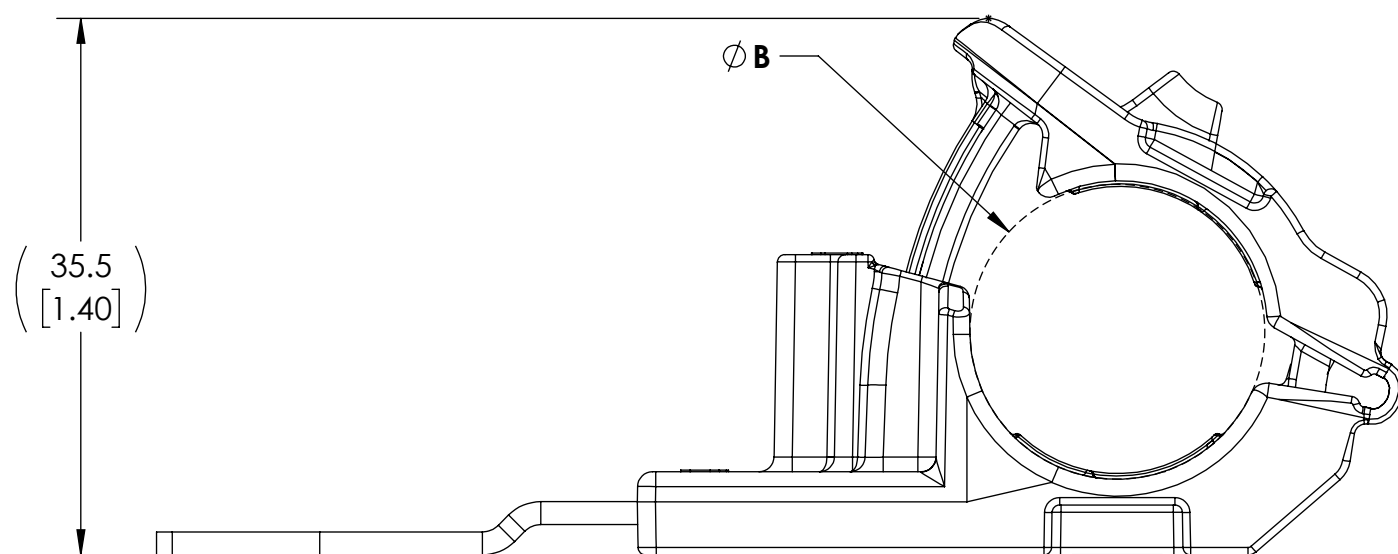
Revision level			Revision Record	Changed	Date	Approved	Date
Drawing	State	Part					
13.1	Design Release	B	SEE ECN# 015311	CTF	07/22/2019	MHT	07/22/2019



CONFIGURATION 1 SHOWN
PRODUCT SHIPPED IN CLAMP OPEN POSITION



MINIMUM BUNDLE DIAMETER



MAXIMUM BUNDLE DIAMETER

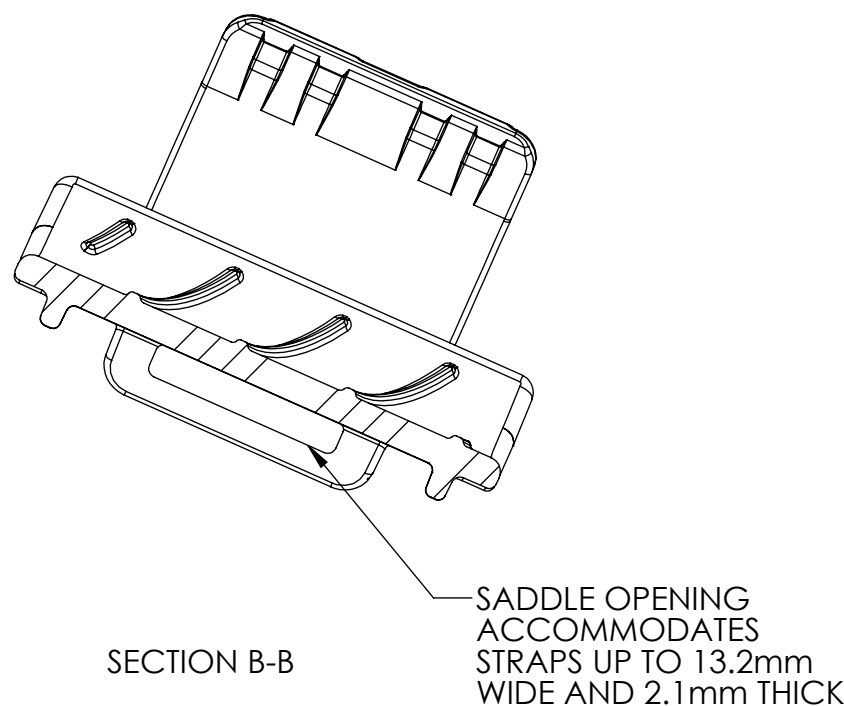
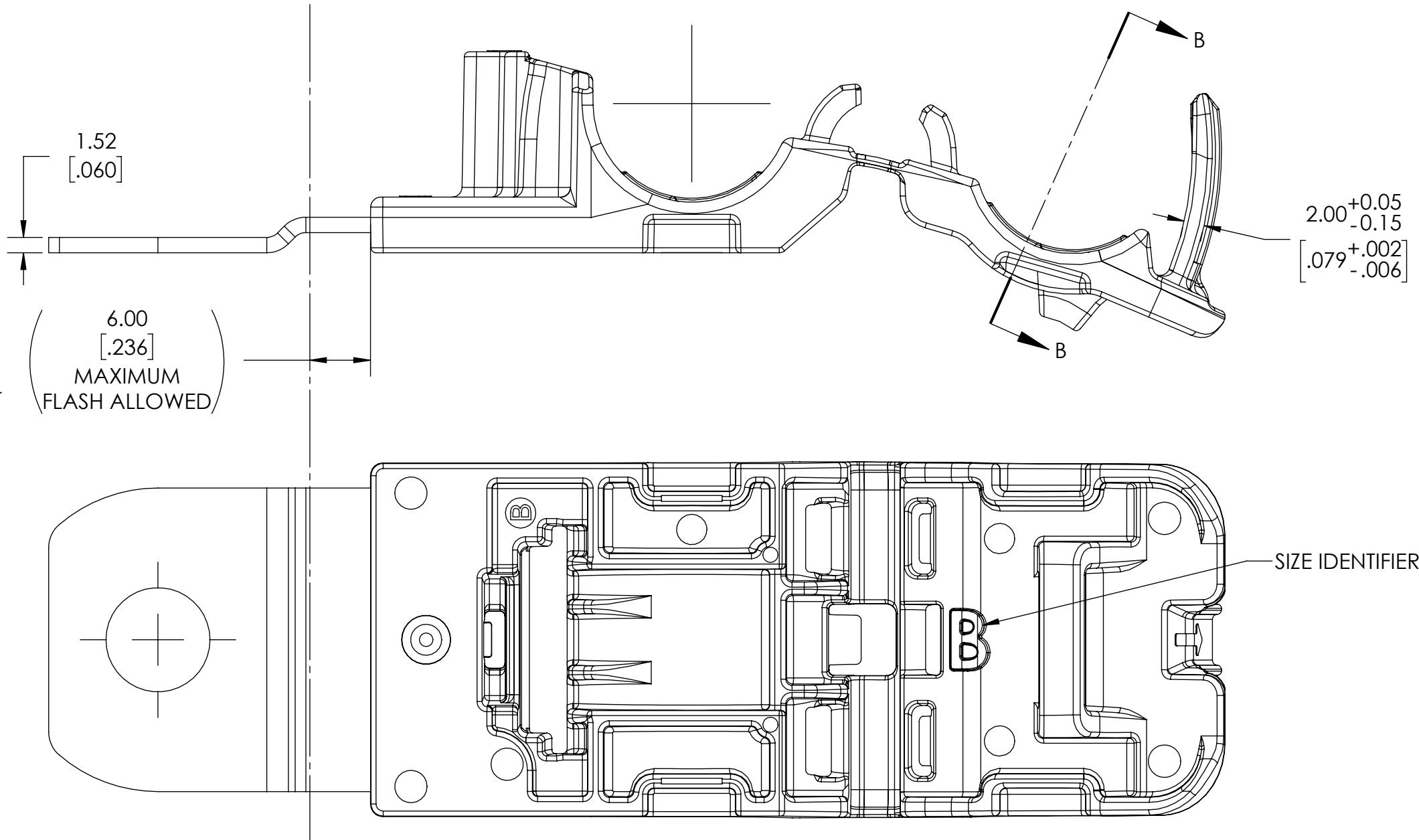
INITIAL MOLD VALIDATION:
 DRY AS MOLDED WITH $\leq 0.5\%$ MOISTURE CONTENT:

1. ITS-0003 RATCHET CLAMP SOLID MANDREL TEST:
EXCEEDED 445 NEWTONS (100 LBS) MIN AT A
NOMINAL BUNDLE DIAMETER OF 15.88 [0.625]
TESTING ONLY REQUIRED OF CONFIGURATION
*RCB180SM10, *RCB180LM10, AND *RCB90LM10
*TESTING CAN BE SUBSTITUTED WITH M6, M8, M12
VERSION MOUNTING HOLES
2. ITS-0008 RATCHET CLAMP CLOSE AND RELEASE TEST:
EXCEEDED 445 NEWTONS (100 LBS) MIN AT A
NOMINAL BUNDLE DIAMETER OF 15.88 [0.625] AFTER
CLOSING AND RELEASING 40 TIMES
3. ITS-0014 RATCHET CLAMP LOW TEMPERATURE
HINGE TEST:
NO DAMAGE OCCURED AFTER BENDING LIVING
HINGE 40 TIMES AT -40°C

PERFORMANCE REQUIREMENTS:
DRY AS MOLDED WITH $\leq 0.5\%$ MOISTURE CONTENT:

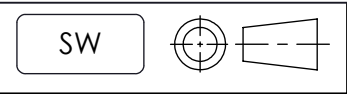
4. ITS-0001 RATCHET CLAMP SPLIT MANDREL TEST:
445 NEWTONS (100 LBS) MIN AT A NOMINAL
BUNDLE DIAMETER OF 15.88 [0.625]
5. MAXIMUM PERCENT REGRIND PERMISSABLE: 25%
6. MAXIMUM ALLOWABLE FLASH OR MISMATCH TO
BE: 0.25mm

NOTE: TESTING #2, #3, AND #4 CAN BE DONE ON ANY TYPE NUMBER AND WILL APPLY TO ALL OTHER TYPE NUMBERS IN THE TABLE ON SHEET 2

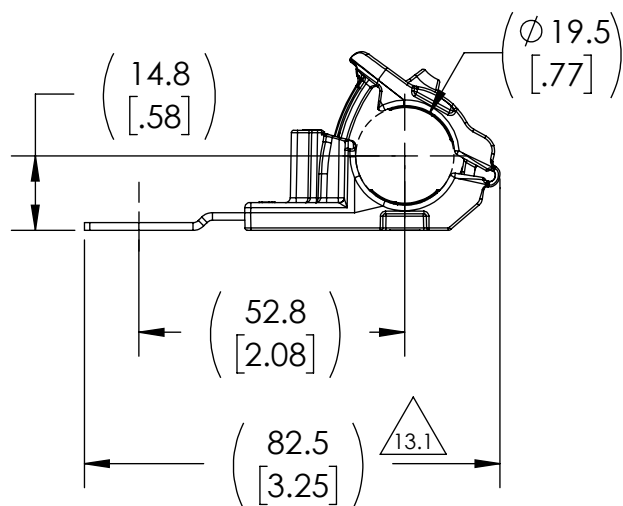
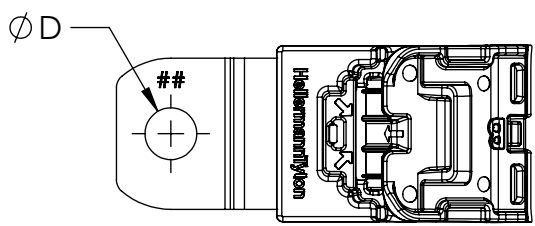


BUNDLE TYPES	^A MINIMUM DIAMETER	^B MAXIMUM DIAMETER
SOFT	12.7 [.50]	19.5 [.77]
HARD	11.9 [.47]	18.7 [.74]

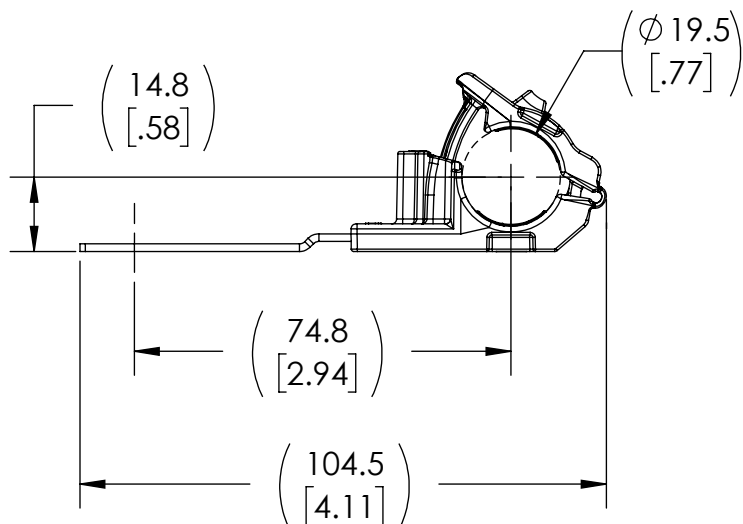
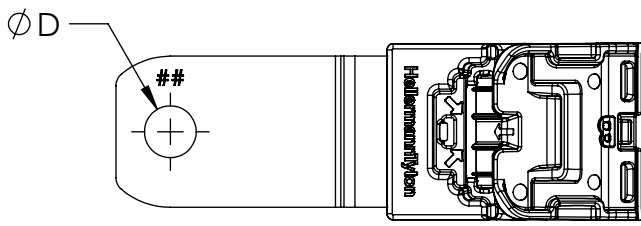
Notes	Material 1. PA66HIRHSUV 2. ZINC PLATED STEEL	Units:	millimeters	<div>The copyright of this drawing is reserved by HellermannTyton. It is issued on condition that it is not reproduced, copied, or disclosed to a third party, either wholly or in part, without the consent of HellermannTyton.</div> <div>North America Email: corp@htamericas.com Web: www.hellermann.tyton.com</div>	Drawn	MHT	04/13/2015	Article/Type-No	SEE CHART	Scale	2:1
			Dimension without tolerances details to:		Approved	KAC	05/28/2015	Title	RCB RATCHET P CLAMP, SIZE B, CLAMP RANGE 12.7 TO 19.5	Project Number	PRP15-0341
		.xxx = ±.013 .xx = ±.13 .x = ±.3 none = ±.8 ∠ = ±0.5°	<div>HellermannTyton</div> <div>North America Email: corp@htamericas.com Web: www.hellermann.tyton.com</div>			Drawing-No	Production : Phase	Format	C		
		Dimension Formatted mm[In]				15-0341-101-CSU			Sheet	1/2	



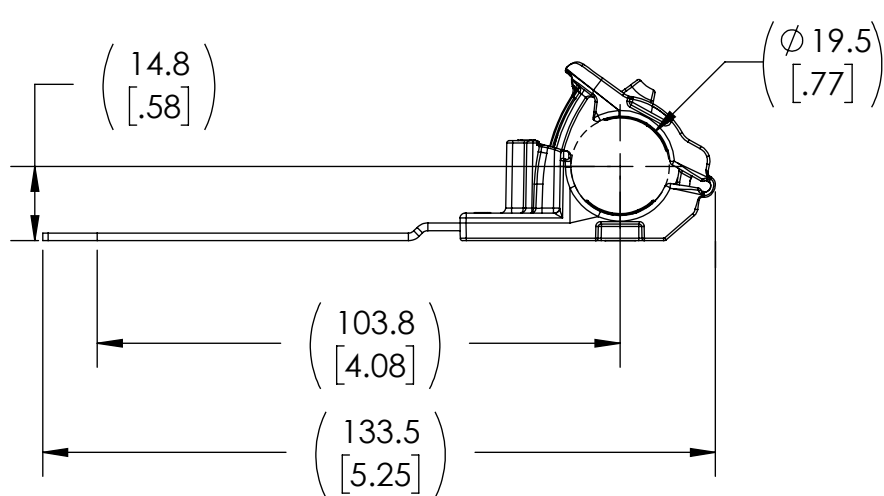
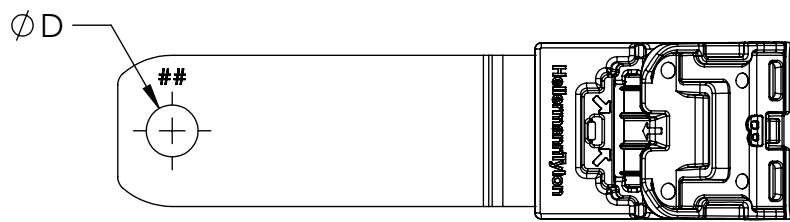
Revision level			Revision Record	Changed	Date	Approved	Date
Drawing	State	Part					
13.1	Design Release	B	SEE ECN# 015311	CTF	07/22/2019	MHT	07/22/2019



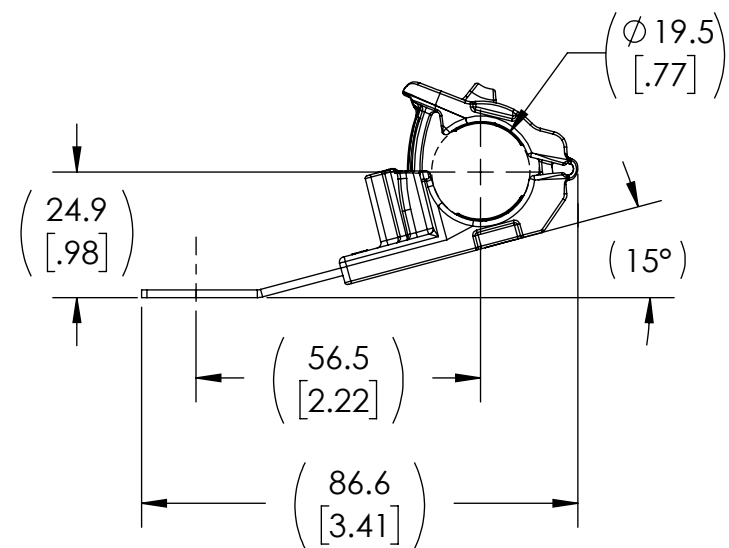
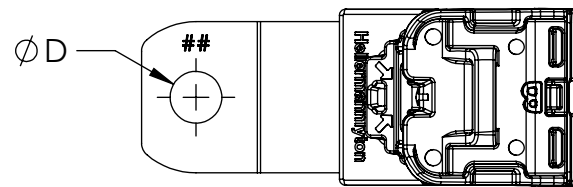
CONFIGURATION: 1



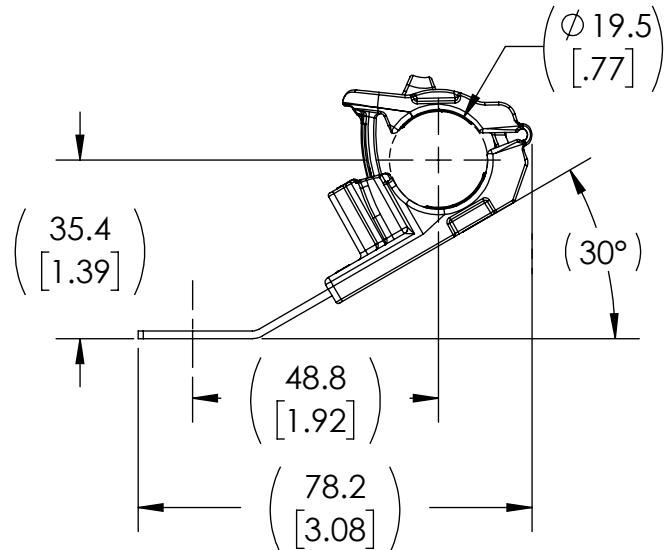
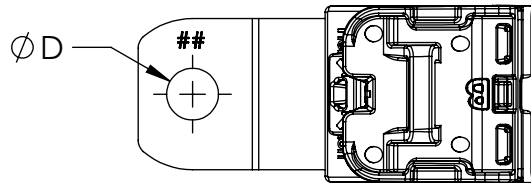
CONFIGURATION: 2



CONFIGURATION: 3

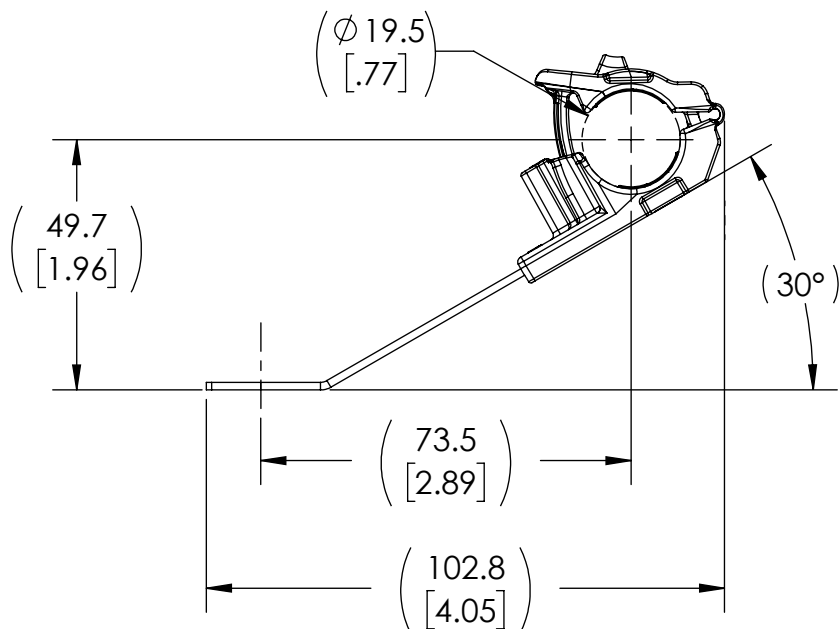
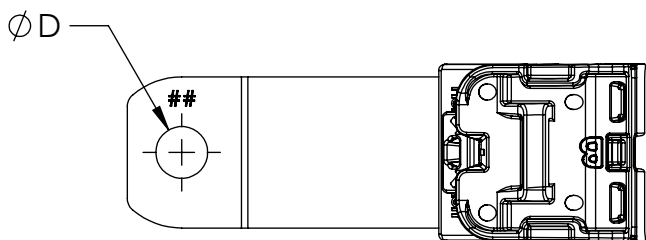


CONFIGURATION: 4

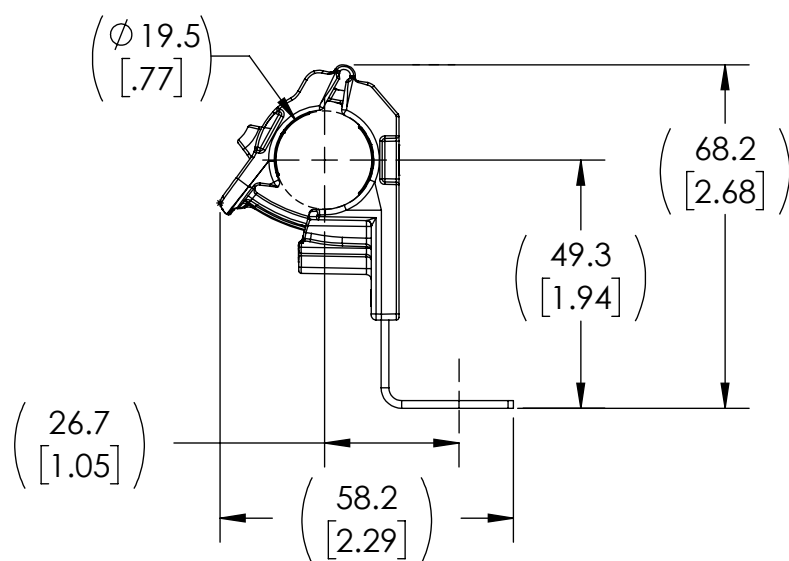
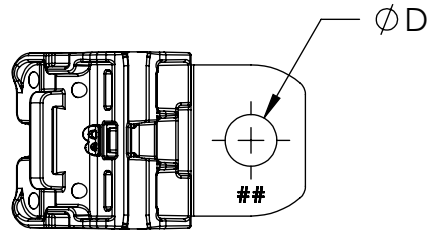


CONFIGURATION: 5

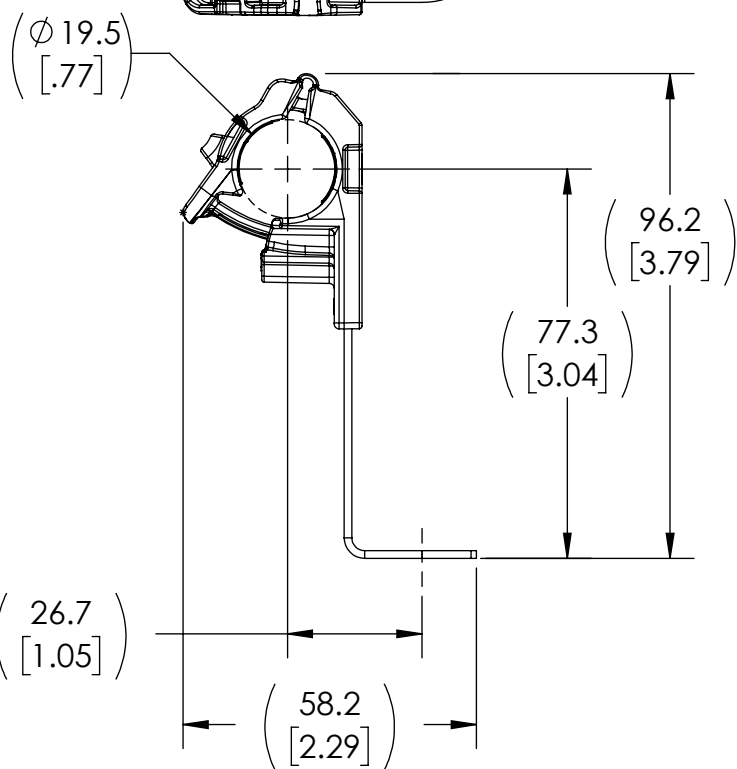
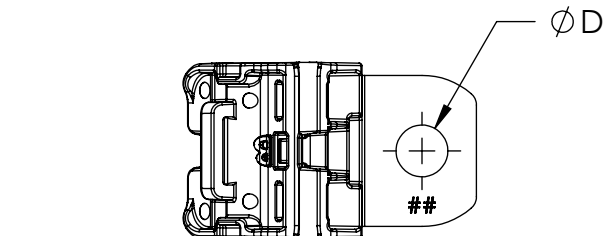
ALL VIEWS IN MAXIMUM BUNDLE DIAMETER
PRODUCT SHIPPED IN CLAMP OPEN POSITION



CONFIGURATION: 6



CONFIGURATION: 7



CONFIGURATION: 8

CONFIGURATION	DESCRIPTION	D ±0.13	TYPE	## ENGRAVING	C - OVERALL OPEN LENGTH REFERENCE (SEE SHEET 1)
1	180° SHORT	6.50 [.256]	RCB180SM6	6	116.2 [4.57]
		8.31 [.327]	RCB180SM8	8	
		10.29 [.405]	RCB180SM10	10	
		12.95 [.510]	RCB180SM12	12	
2	180° MEDIUM	6.50 [.256]	RCB180MM6	6	138.2 [5.44]
		8.31 [.327]	RCB180MM8	8	
		10.29 [.405]	RCB180MM10	10	
		12.95 [.510]	RCB180MM12	12	
3	180° LONG	6.50 [.256]	RCB180LM6	6	167.2 [6.58]
		8.31 [.327]	RCB180LM8	8	
		10.29 [.405]	RCB180LM10	10	
		12.95 [.510]	RCB180LM12	12	
4	15° SHORT	6.50 [.256]	RCB15SM6	6	124.1 [4.89]
		8.31 [.327]	RCB15SM8	8	
		10.29 [.405]	RCB15SM10	10	
		12.95 [.510]	RCB15SM12	12	
5	30° SHORT	6.50 [.256]	RCB30SM6	6	122.0 [4.80]
		8.31 [.327]	RCB30SM8	8	
		10.29 [.405]	RCB30SM10	10	
		12.95 [.510]	RCB30SM12	12	
6	30° LONG	6.50 [.256]	RCB30LM6	6	150.5 [5.93]
		8.31 [.327]	RCB30LM8	8	
		10.29 [.405]	RCB30LM10	10	
		12.95 [.510]	RCB30LM12	12	
7	90° SHORT	6.50 [.256]	RCB90SM6	6	101.9 [4.01]
		8.31 [.327]	RCB90SM8	8	
		10.29 [.405]	RCB90SM10	10	
		12.95 [.510]	RCB90SM12	12	
8	90° LONG	6.50 [.256]	RCB90LM6	6	129.9 [5.11]
		8.31 [.327]	RCB90LM8	8	
		10.29 [.405]	RCB90LM10	10	
		12.95 [.510]	RCB90LM12	12	

Notes	Material 1. PA66HIRHSUV 2. ZINC PLATED STEEL	Units: millimeters Dimension without tolerances details to: .XXX = ±.013 .XX = ±.13 .X = ±.3 None = ±.8 ∠ = ±0.5* Dimension Formatted mm/[in]	The copyright of this drawing is reserved by HellermannTyton. It is issued on condition that it is not reproduced, copied, or disclosed to a third party, either wholly or in part, without the consent of HellermannTyton.	Drawn	MHT	04/13/2015	Article/Type—No	SEE CHART	Scale	2:3
				Approved	KAC	05/28/2015	Title	RCB RATCHET P CLAMP, SIZE B, CLAMP RANGE 12.7 TO 19.5	Project Number	PRP15-0341
				HellermannTyton North America Email: corp@htamericas.com Web: www.hellermann.tyton.com			Drawing—No	Production : Phase	Format	C
							15-0341-101-CSU			Sheet