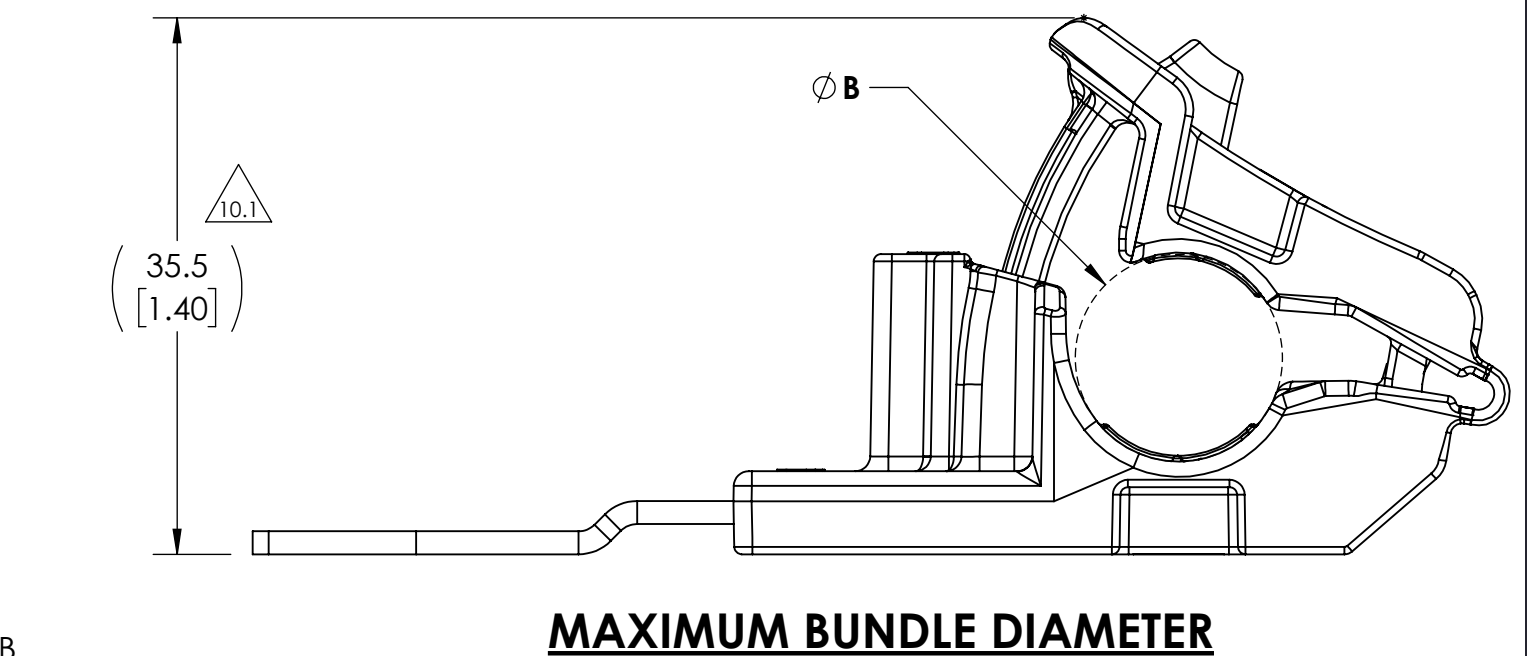
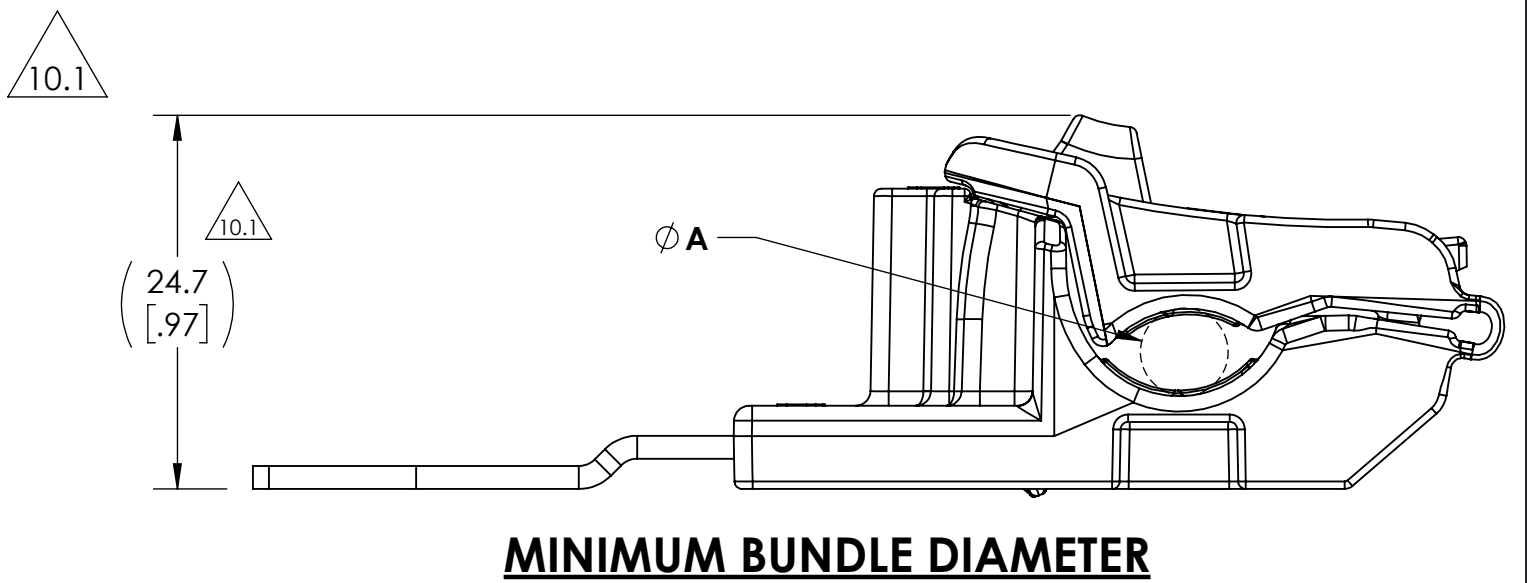
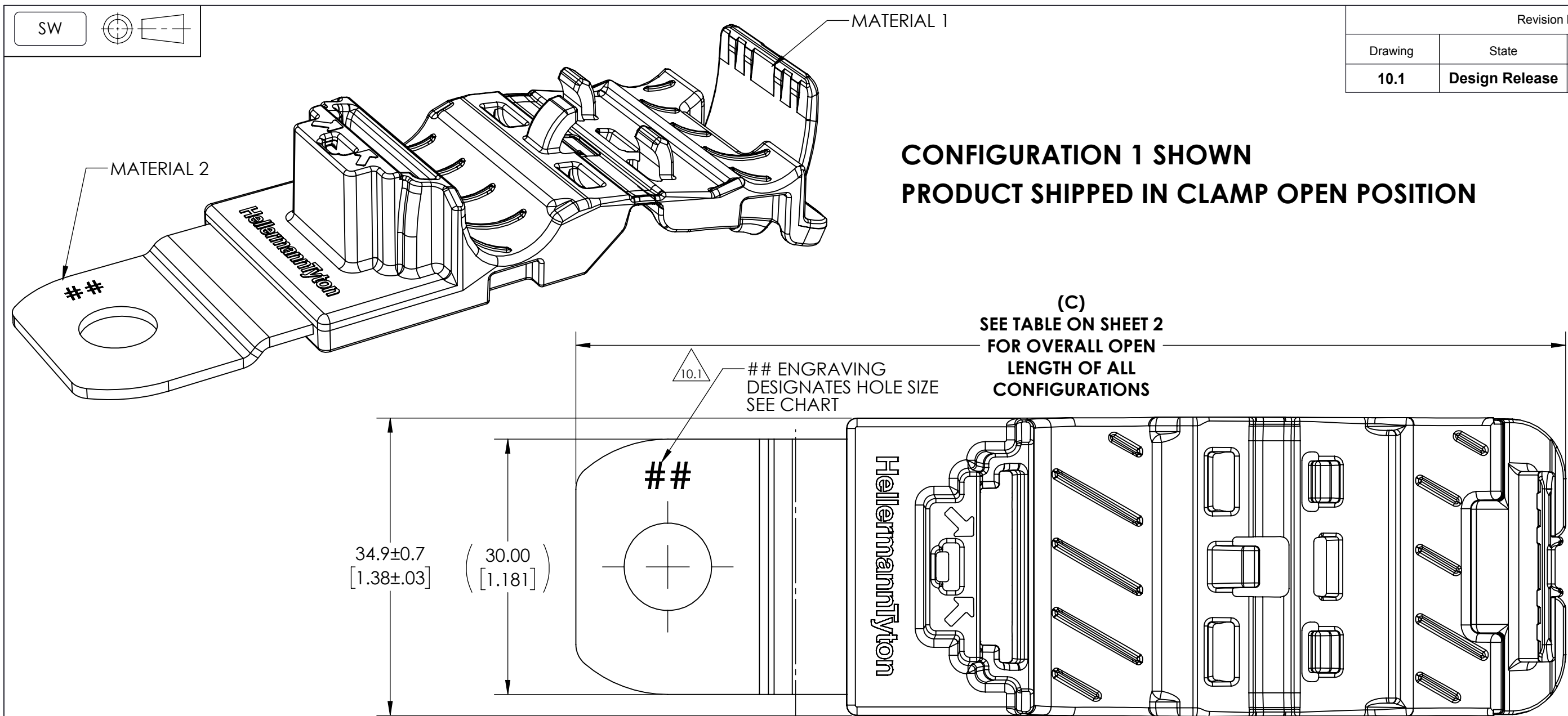


Revision level			Revision Record	Changed	Date	Approved	Date
Drawing	State	Part					
10.1	Design Release	B	SEE ECN# 015124	CTF	05/07/2019	MHT	05/07/2019



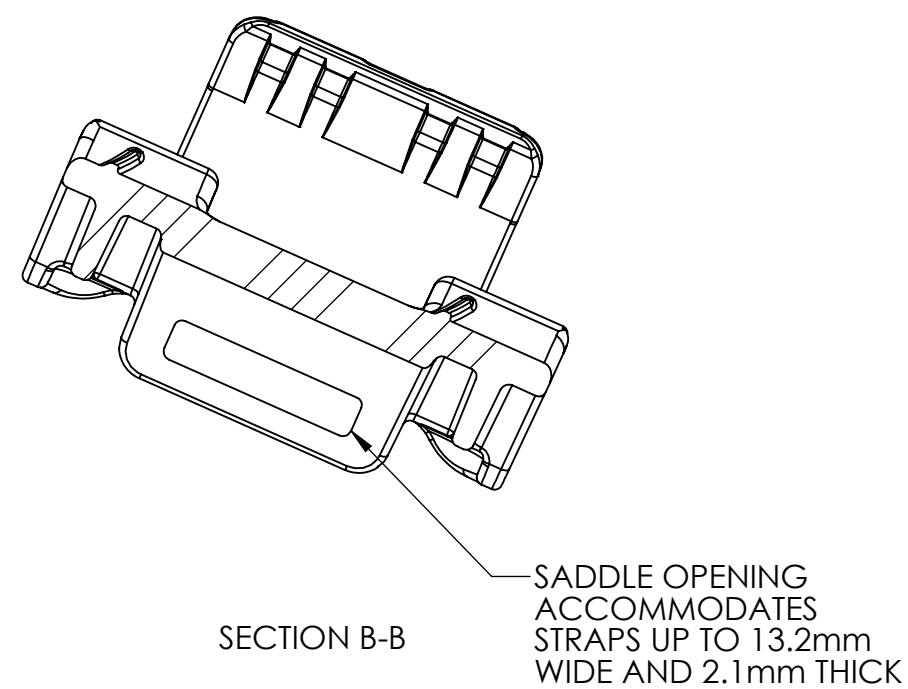
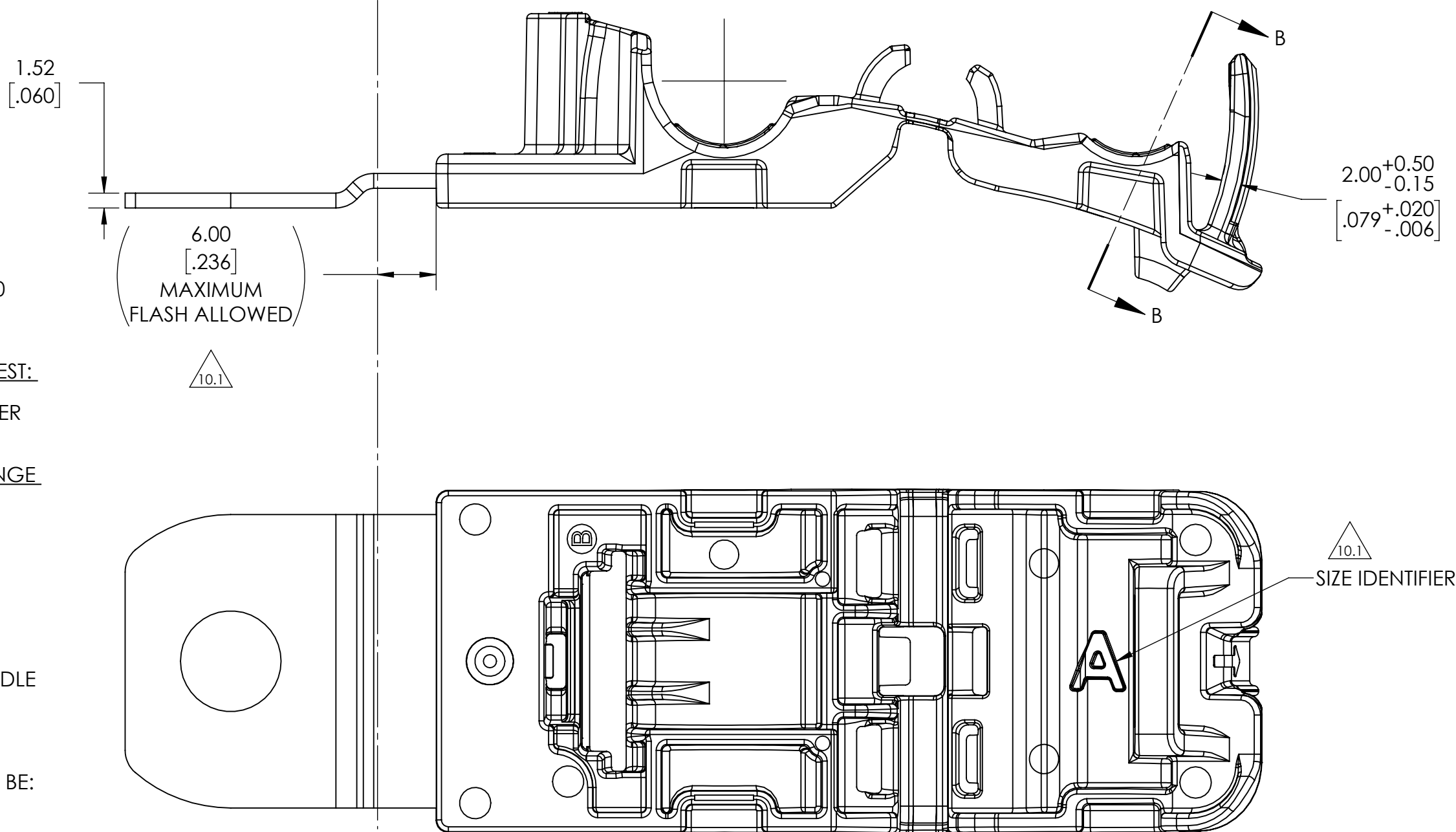
INITIAL MOLD VALIDATION:
 DRY AS MOLDED WITH $\leq 0.5\%$ MOISTURE CONTENT:

1. ITS-0003 RATCHET CLAMP SOLID MANDREL TEST:
EXCEEDED 445 NEWTONS (100 LBS) MIN AT A
NOMINAL BUNDLE DIAMETER OF 9.53 [0.375]
TESTING ONLY REQUIRED OF CONFIGURATION
*RCA180SM10, *RCA180LM10, AND *RCA90LM10
*TESTING CAN BE SUBSTITUTED WITH M6, M8, M12
VERSION MOUNTING HOLES
2. ITS-0008 RATCHET CLAMP CLOSE AND RELEASE TEST:
EXCEEDED 445 NEWTONS (100 LBS) MIN AT A
NOMINAL BUNDLE DIAMETER OF 9.53 [0.375] AFTER
CLOSING AND RELEASING 40 TIMES
3. ITS-0014 RATCHET CLAMP LOW TEMPERATURE HINGE
TEST:
NO DAMAGE OCCURED AFTER BENDING LIVING
HINGE 40 TIMES AT -40°C

PERFORMANCE REQUIREMENTS:
DRY AS MOLDED WITH $\leq 0.5\%$ MOISTURE CONTENT:

4. ITS-0001 RATCHET CLAMP SPLIT MANDREL TEST:
445 NEWTONS (100 LBS) MIN AT A NOMINAL BUNDLE
DIAMETER OF 9.53 [0.375]
5. MAXIMUM PERCENT REGRIND PERMISSABLE: 25%
6. MAXIMUM ALLOWABLE FLASH OR MISMATCH TO BE:
0.25mm

NOTE: TESTING #2, #3 AND #4 CAN BE DONE ON ANY TYPE NUMBER AND WILL APPLY TO ALL OTHER TYPE NUMBERS IN THE TABLE ON SHEET 2



BUNDLE TYPES	^A MINIMUM DIAMETER	^B MAXIMUM DIAMETER
SOFT	6.2 [.24]	13.7 [.54]
HARD	5.4 [.21]	12.9 [.51]

Notes	Material 1. PA66HIRHSUV 2. ZINC PLATED STEEL	Units: millimeters	Drawn	MHT	05/26/2015	Article/Type-No	SEE CHART SHEET 2	Scale	2:1	
		Dimension without tolerances details to: .xxx = ±.013 .xx = ±.13 .x = ±.3 None = ±.8 ≤ = ±0.5"	<div>The copyright of this drawing is reserved by HellermannTyton. It is issued on condition that it is not reproduced, copied, or disclosed to a third party, either wholly or in part, without the consent of HellermannTyton.</div>	Approved	KAC	05/28/2015	Title	RCA RATCHET P CLAMP, SIZE A, CLAMP RANGE 6.0 TO 13.7	Project Number	PRP15-0341
		Dimension Formatted mm/[in]		<div>HellermannTyton</div> <div>North America Email: corp@htamericas.com Web: www.hellermann.tyton.com</div>			Drawing-No	Production : Phase	Format	C
							15-0341-102-CSU		Sheet	1/2

SW

Revision level			Revision Record	Changed	Date	Approved	Date
Drawing	State	Part					
10.1	Design Release	B					

Configuration 1: 180° Short

Dimensions: (13.0) [.51], (50.5) [1.99], (83.2) [3.27], (13.7) [.54]

Configuration 2: 180° Medium

Dimensions: (13.0) [.51], (72.5) [2.85], (105.2) [4.14], (13.7) [.54]

Configuration 3: 180° Long

Dimensions: (13.0) [.51], (101.5) [3.99], (134.2) [5.28], (13.7) [.54]

Configuration 4: 15° Short

Dimensions: (22.6) [.89], (54.7) [2.15], (87.4) [3.44], (13.7) [.54], (15°)

Configuration 5: 30° Short

Dimensions: (32.7) [1.29], (47.7) [1.88], (78.9) [3.11], (13.7) [.54], (30°)

ALL VIEWS IN MAXIMUM BUNDLE DIAMETER
PRODUCT SHIPPED IN CLAMP OPEN POSITION

Configuration 6: 15° Long

Dimensions: (47.0) [1.85], (72.4) [2.85], (103.6) [4.08], (13.7) [.54], (30°)

Configuration 7: 30° Long

Dimensions: (24.9) [.98], (58.2) [2.29], (47.0) [1.85], (68.9) [2.71], (13.7) [.54], (30°)

Configuration 8: 90° Short

Dimensions: (24.9) [.98], (58.2) [2.29], (75.0) [2.95], (96.9) [3.81], (13.7) [.54], (90°)

CONFIGURATION	DESCRIPTION	D ±0.13	TYPE	## ENGRAVING	C - OVERALL OPEN LENGTH REFERENCE (SEE SHEET 1)
1	180° SHORT	6.50 [.256]	RCA180SM6	6	116.2 [4.58]
		8.31 [.327]	RCA180SM8	8	
		10.29 [.405]	RCA180SM10	10	
		12.95 [.510]	RCA180SM12	12	
2	180° MEDIUM	6.50 [.256]	RCA180MM6	6	138.2 [5.44]
		8.31 [.327]	RCA180MM8	8	
		10.29 [.405]	RCA180MM10	10	
		12.95 [.510]	RCA180MM12	12	
3	180° LONG	6.50 [.256]	RCA180LM6	6	167.2 [6.58]
		8.31 [.327]	RCA180LM8	8	
		10.29 [.405]	RCA180LM10	10	
		12.95 [.510]	RCA180LM12	12	
4	15° SHORT	6.50 [.256]	RCA15SM6	6	124.1 [4.89]
		8.31 [.327]	RCA15SM8	8	
		10.29 [.405]	RCA15SM10	10	
		12.95 [.510]	RCA15SM12	12	
5	30° SHORT	6.50 [.256]	RCA30SM6	6	122.0 [4.80]
		8.31 [.327]	RCA30SM8	8	
		10.29 [.405]	RCA30SM10	10	
		12.95 [.510]	RCA30SM12	12	
6	30° LONG	6.50 [.256]	RCA30LM6	6	150.5 [5.93]
		8.31 [.327]	RCA30LM8	8	
		10.29 [.405]	RCA30LM10	10	
		12.95 [.510]	RCA30LM12	12	
7	90° SHORT	6.50 [.256]	RCA90SM6	6	101.9 [4.01]
		8.31 [.327]	RCA90SM8	8	
		10.29 [.405]	RCA90SM10	10	
		12.95 [.510]	RCA90SM12	12	
8	90° LONG	6.50 [.256]	RCA90LM6	6	129.9 [5.12]
		8.31 [.327]	RCA90LM8	8	
		10.29 [.405]	RCA90LM10	10	
		12.95 [.510]	RCA90LM12	12	

Notes

Material
1. PA66HIRHSUV
2. ZINC PLATED STEEL

Units: millimeters
Dimension without tolerances details to:
.XXX = ±.013
.XX = ±.13
.X = ±.3
None = ±.8
< = ±0.5*
Dimension Formatted mm/[in]

The copyright of this drawing is reserved by HellermannTyton. It is issued on condition that it is not reproduced, copied, or disclosed to a third party, either wholly or in part, without the consent of HellermannTyton.

Drawn MHT 05/26/2015

Approved KAC 05/28/2015

HellermannTyton
North America
Email: corp@htamericas.com
Web: www.hellermann.tyton.com

Article/Type-No SEE CHART SHEET 2
Title RCA RATCHET P CLAMP, SIZE A, CLAMP RANGE 6.0 TO 13.7
Drawing-No Production-Phase
15-0341-102-CSU

Scale 2:3
Project Number PRP15-0341
Format C
Sheet 2/2