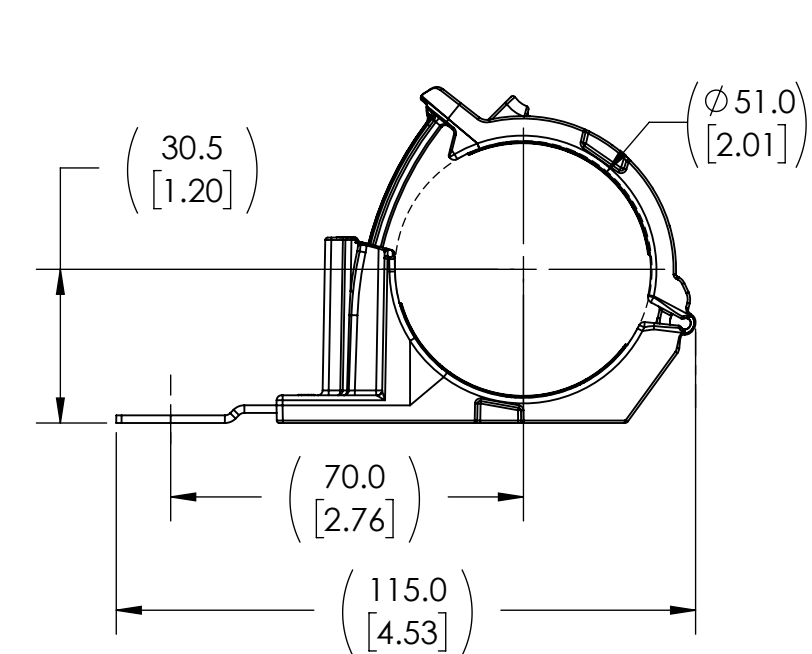
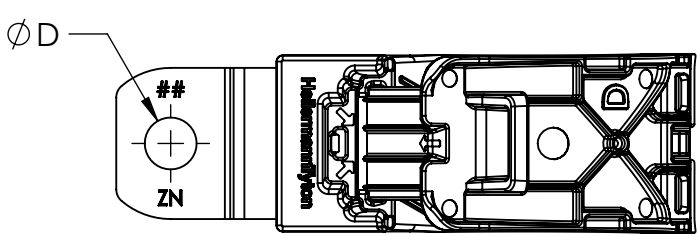
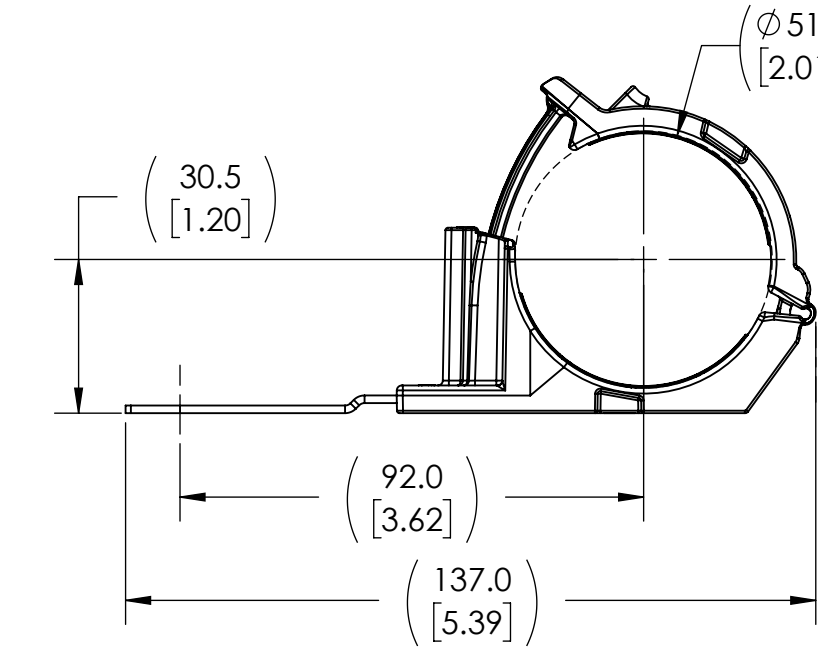
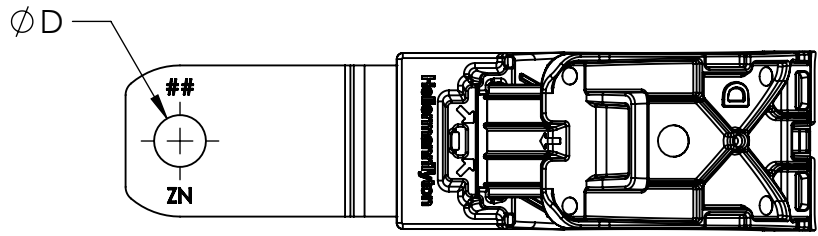




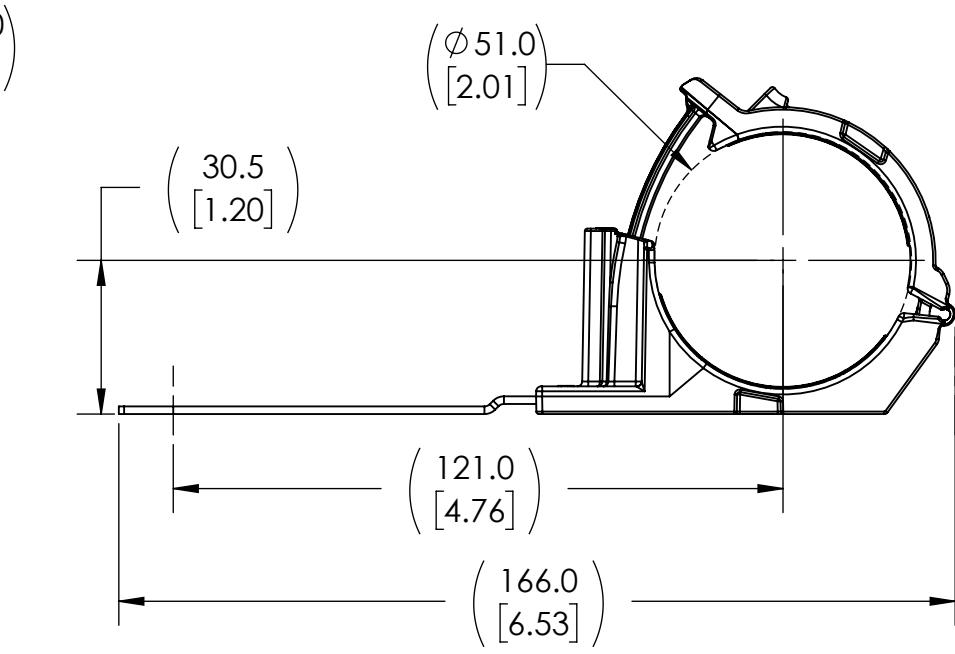
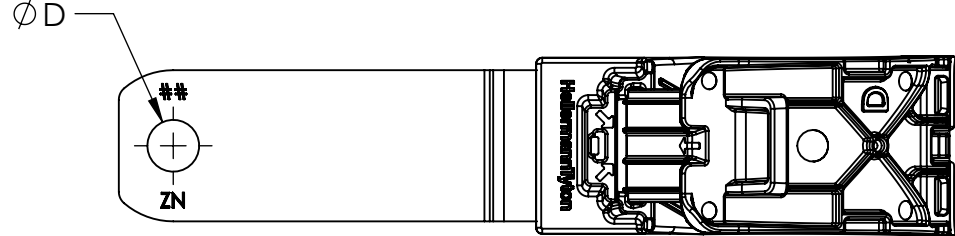
Revision level			Revision Record	Changed	Date	Approved	Date
Drawing	State	Part					
08.1	Design Release	-	SEE ECN# 016638	RLV	8/13/2021	MHT	8/13/2021



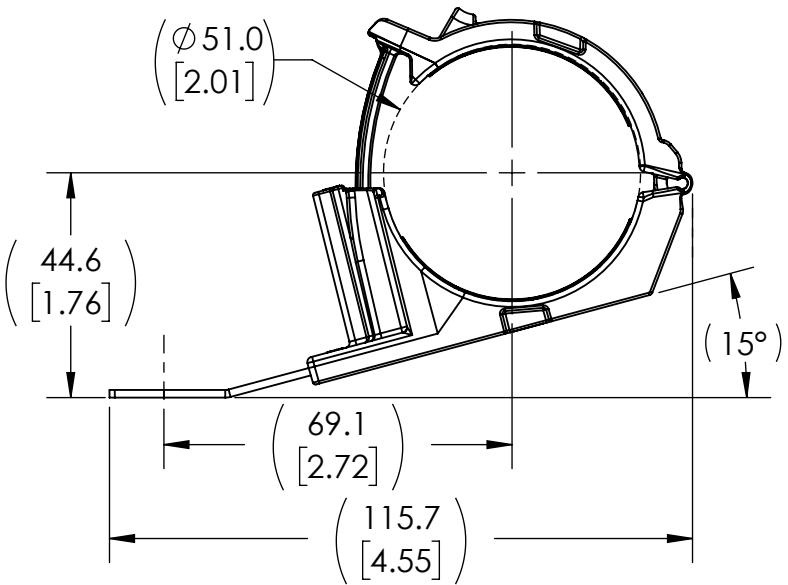
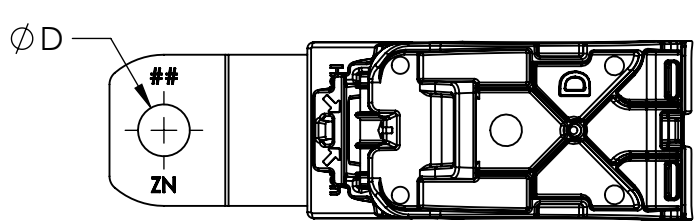
CONFIGURATION: 1



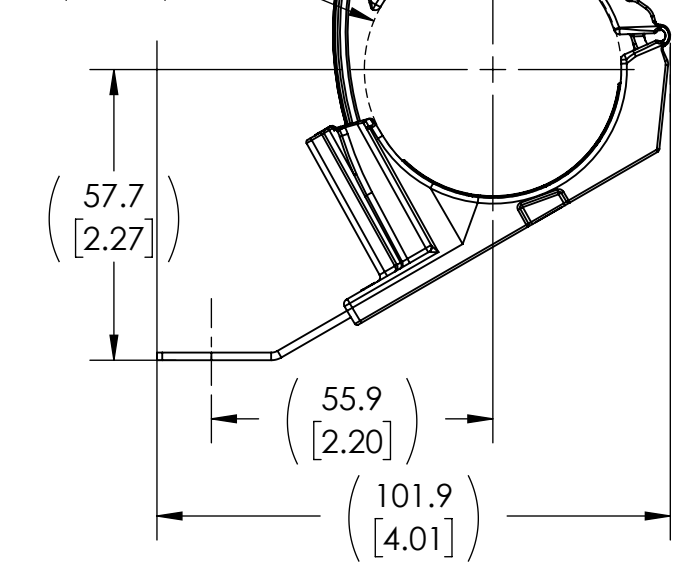
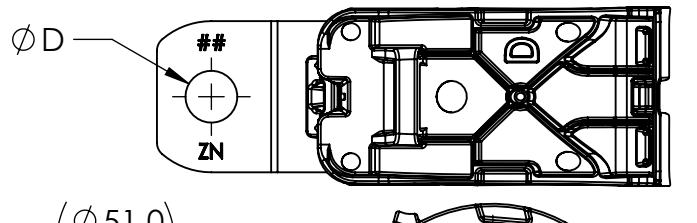
CONFIGURATION: 2



CONFIGURATION: 3

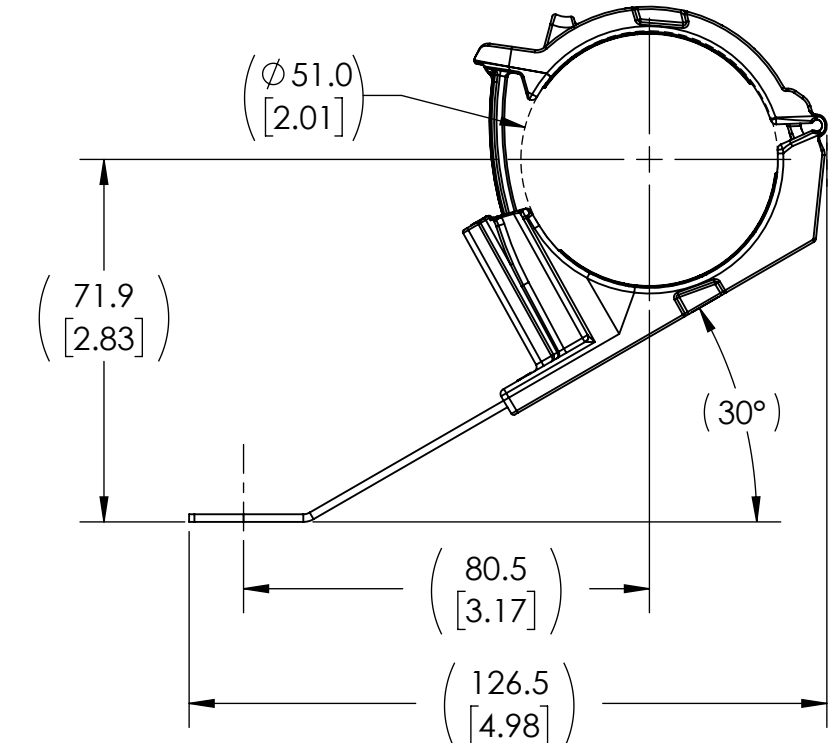
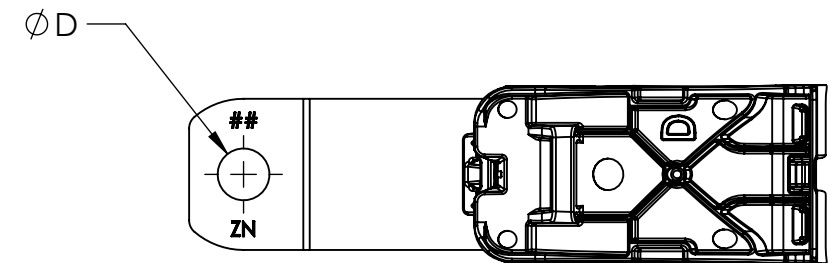


CONFIGURATION: 4

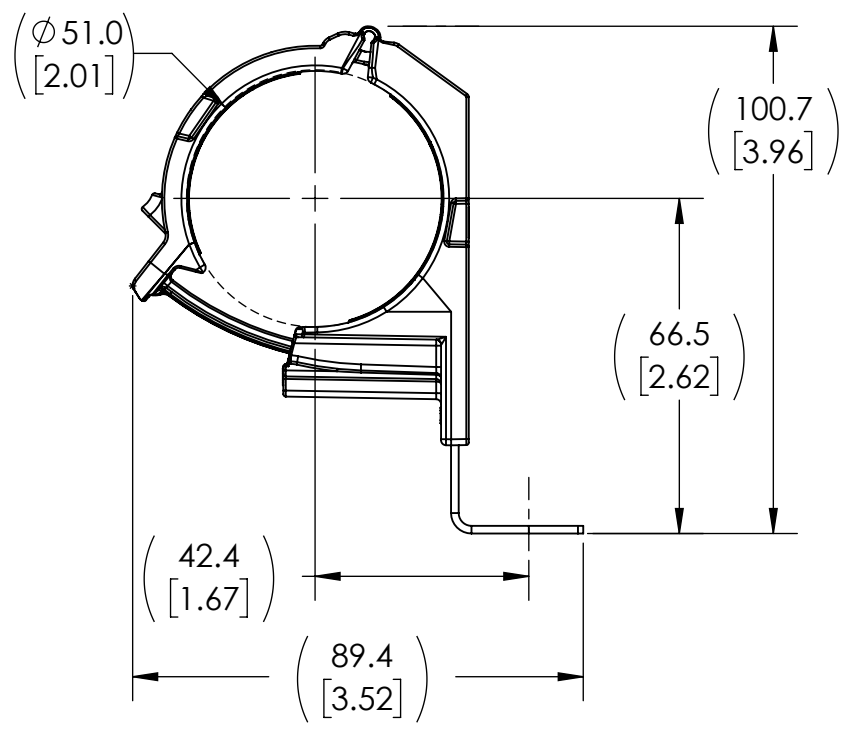
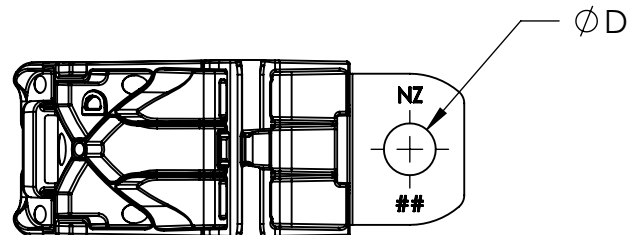


CONFIGURATION: 5

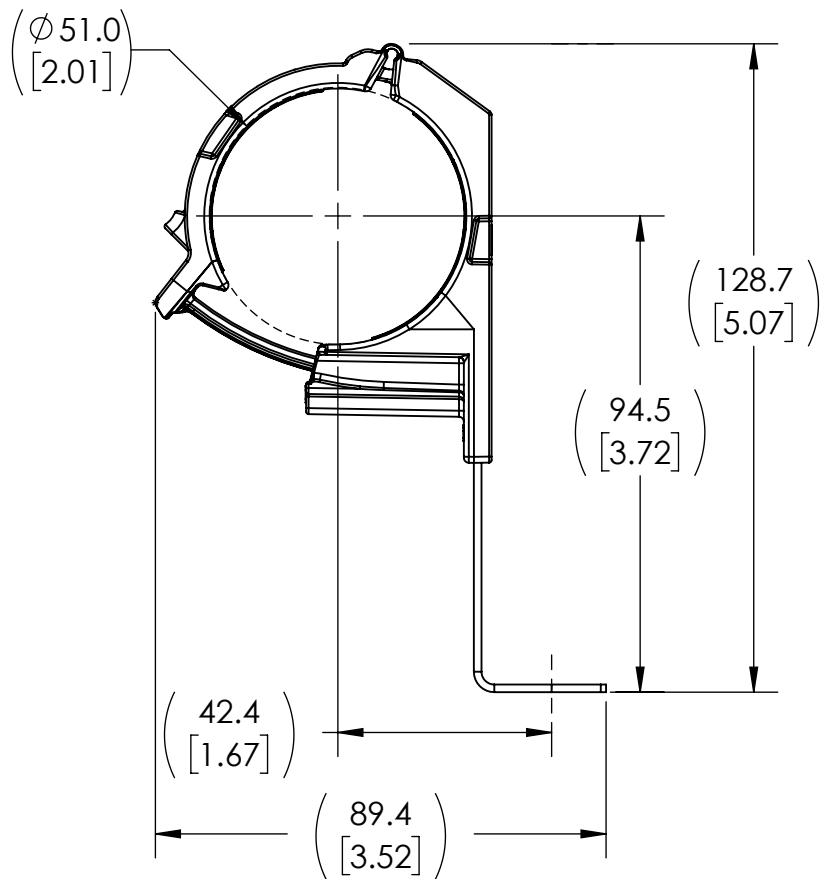
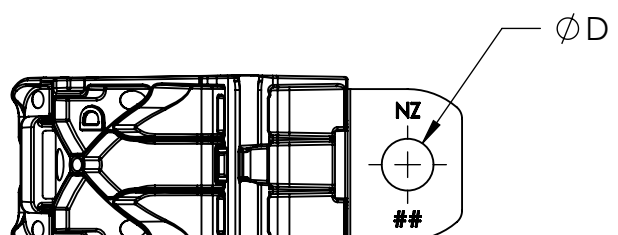
ALL VIEWS IN MAXIMUM BUNDLE DIAMETER
PRODUCT SHIPPED IN CLAMP OPEN POSITION



CONFIGURATION: 6



CONFIGURATION: 7



CONFIGURATION: 8

CONFIGURATION	DESCRIPTION	D ±0.13	TYPE	## ENGRAVING	C - OVERALL OPEN LENGTH REFERENCE (SEE SHEET 1)
1	180° SHORT	6.50 [.256]	RCD180SM6	6	181.5 [7.15]
		8.31 [.327]	RCD180SM8	8	
		10.29 [.405]	RCD180SM10	10	
		12.95 [.510]	RCD180SM12	12	
2	180° MEDIUM	6.50 [.256]	RCD180MM6	6	203.5 [8.01]
		8.31 [.327]	RCD180MM8	8	
		10.29 [.405]	RCD180MM10	10	
		12.95 [.510]	RCD180MM12	12	
3	180° LONG	6.50 [.256]	RCD180LM6	6	232.5 [9.15]
		8.31 [.327]	RCD180LM8	8	
		10.29 [.405]	RCD180LM10	10	
		12.95 [.510]	RCD180LM12	12	
4	15° SHORT	6.50 [.256]	RCD15SM6	6	189.4 [7.46]
		8.31 [.327]	RCD15SM8	8	
		10.29 [.405]	RCD15SM10	10	
		12.95 [.510]	RCD15SM12	12	
5	30° SHORT	6.50 [.256]	RCD30SM6	6	187.3 [7.37]
		8.31 [.327]	RCD30SM8	8	
		10.29 [.405]	RCD30SM10	10	
		12.95 [.510]	RCD30SM12	12	
6	30° LONG	6.50 [.256]	RCD30LM6	6	215.8 [8.50]
		8.31 [.327]	RCD30LM8	8	
		10.29 [.405]	RCD30LM10	10	
		12.95 [.510]	RCD30LM12	12	
7	90° SHORT	6.50 [.256]	RCD90SM6	6	167.2 [6.58]
		8.31 [.327]	RCD90SM8	8	
		10.29 [.405]	RCD90SM10	10	
		12.95 [.510]	RCD90SM12	12	
8	90° LONG	6.50 [.256]	RCD90LM6	6	195.2 [7.69]
		8.31 [.327]	RCD90LM8	8	
		10.29 [.405]	RCD90LM10	10	
		12.95 [.510]	RCD90LM12	12	

Notes	Material 1. PA66HIRHSUV 2. ZINC PLATED STEEL	Units: millimeters Dimension without tolerances details to: .XXX = ±.013 .XX = ±.13 .X = ±.3 None = ±.8 ∠ = ±0.5° Dimension Formatted mm/[in]	The copyright of this drawing is reserved by HellermannTyton. It is issued on condition that it is not reproduced, copied, or disclosed to a third party, either wholly or in part, without the consent of HellermannTyton.	Drawn	KEP	08/21/2015	Article/Type-No	SEE CHART (SHEET 2)	Scale	2:3
				Approved	MHT	8/21/2015	Title	RCD RATCHET P CLAMP, SIZE D, CLAMP RANGE 36.0 TO 51.0	Project Number	PRP15-0341
				<div>HellermannTyton</div> <div>North America</div> <div>Email: corp@htamericas.com</div> <div>Web: www.hellermann.tyton.com</div>			Drawing-No	Production : Phase	Format	C
							15-0341-104-CSU			Sheet