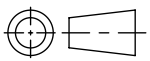


SW



SUPERSEDES DWG MT1013002CST, REV 02

Revision level			Revision Record	Changed	Date	Approved	Date
Drawing	State	Part					
01.2	Design Release	E	SEE ECN# 016497	RLV	5/25/2021	JPG	5/25/2021

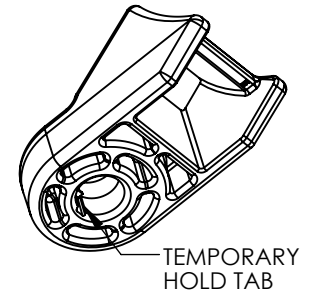
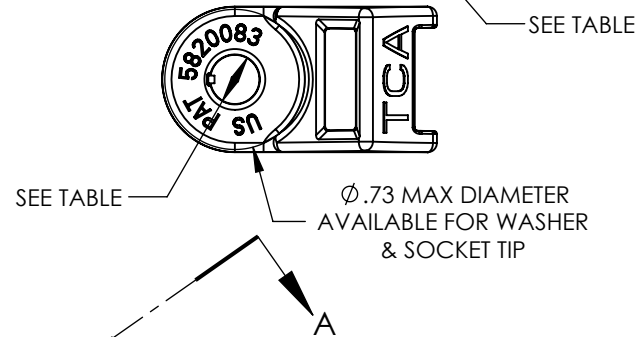
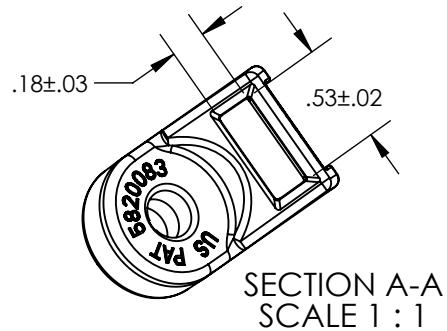
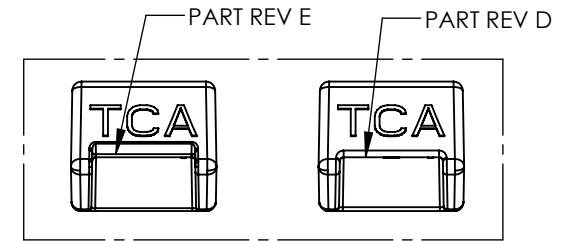
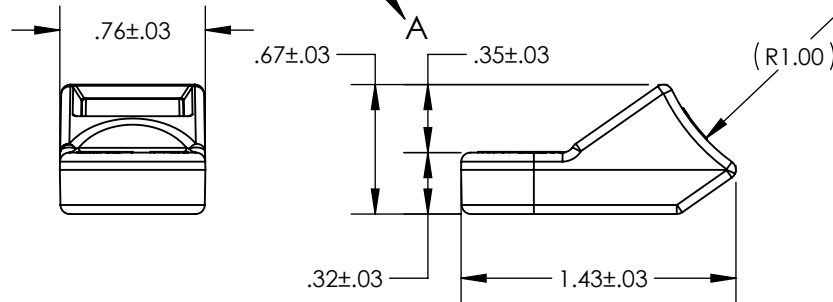


TABLE OF PART NUMBERS		
PART NUMBER	PART REV	HOLE DIA
HDM19	D or E	3/16"
HDM25	D or E	1/4"
HDM312	D or E	5/16"

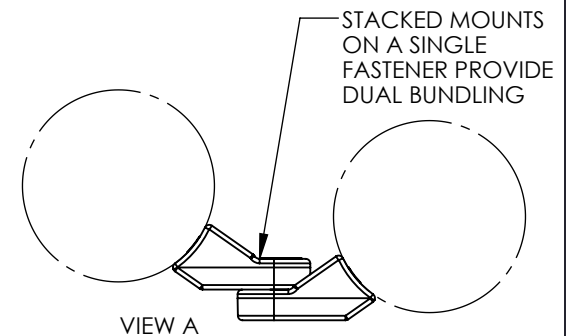
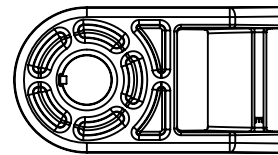


PRODUCT EXISTS WITH BOTH GEOMETRIES SHOWN ABOVE

PERFORMANCE REQUIREMENTS:
 - 250 LB TENSILE STRENGTH PERPENDICULAR AND PARALLEL TO BOLT AXIS
 - 115 IN-LB OF TORQUE APPLIED TO HDM25 USING 1/4" FASTENER WITH WASHER



REFERENCE FEATURES:
 - RUGGED HEAVY DUTY DESIGN & MATERIAL
 - TEMPORARY HOLD TAB INSIDE HOLE ENGAGES THREADS TEMPORARILY
 - ACCEPTS MOST STANDARD CABLE TIES UP TO 1/2" WIDE
 - MOUNTS ARE DESIGNED TO BE VERTICALLY STACKED ON A SINGLE FASTENER TO ALLOW DUAL BUNDLING - SEE VIEW A



Material PA66HIRHSUV BLACK	Units: inches Dimension without tolerances details to: .xxxx = ±.0005 .xxx = ±.005 .xx = ±.01 .x = ±.03 None = ±.06 ∠ = ±0.5° Dimension Formatted in [mm]	The copyright of this drawing is reserved by HellermannTyton. It is issued on condition that it is not reproduced, copied, or disclosed to a third party, either wholly or in part, without the consent of HellermannTyton.	Drawn	KEP	7/20/2015	Article/Type-No	SEE TABLE	Scale	1:1
			Approved	KAC	7/20/2015	Title	HEAVY-DUTY CABLE TIE MOUNT WITH MOUNTING HOLE	Project Number	PRP 15-0351
			HellermannTyton North America Email: corp@htamericas.com Web: www.hellermann.tyton.com			Drawing-No	PRODUCTION : Phase	Format	AH
						15-0351-001-CSU		Sheet	1/1