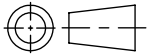
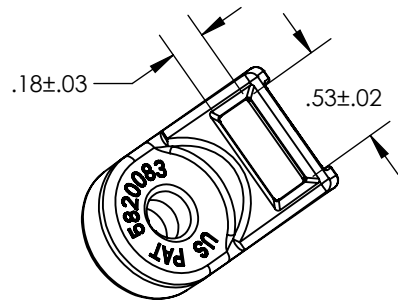


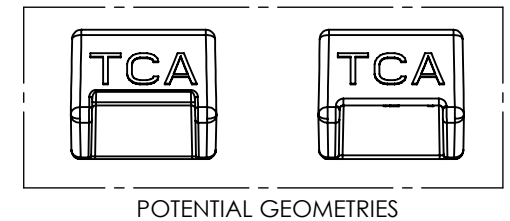
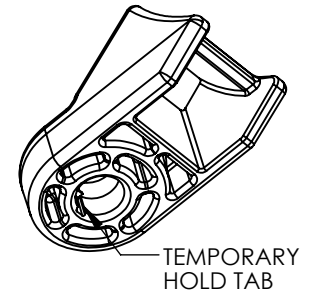
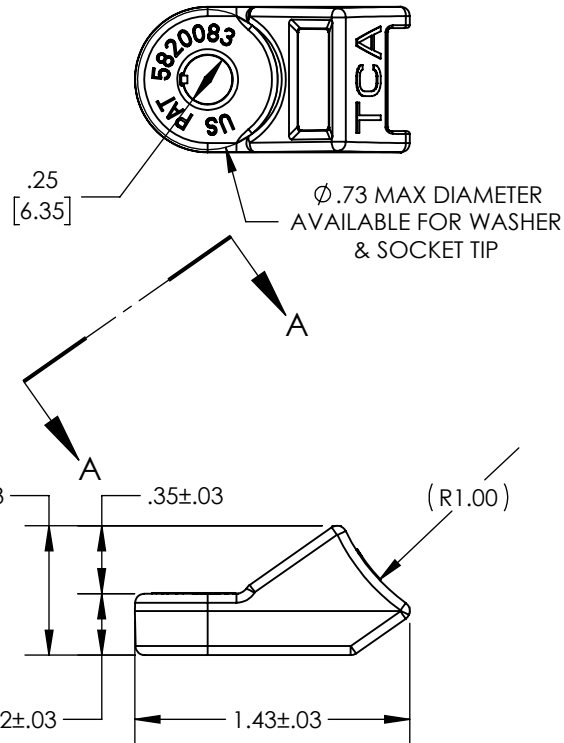
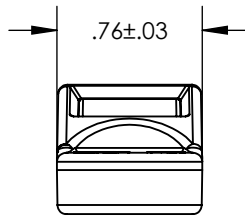
SW



Revision level			Revision Record	Changed	Date	Approved	Date
Drawing	State	Part					
01.1	Design Release	-	SEE ECN# 015612	CTF	12/20/2019	MHT	12/20/2019



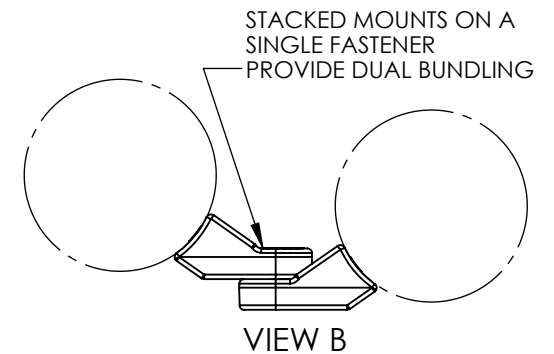
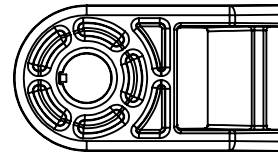
VIEW A-A  
SCALE 1 : 1



POTENTIAL GEOMETRIES

#### REFERENCE FEATURES:

- RUGGED HEAVY DUTY DESIGN & MATERIAL
- 250 lbf ASSEMBLY STRENGTH IN ANY DIRECTION
- WITHSTANDS 115 in-lb OF TORQUE APPLIED TO 1/4" FASTENER WITH WASHER
- FASTEN MOUNT WITH STUD, BOLT, SCREW, RIVET, NAIL, ETC...
- SMALL TAB INSIDE HOLE ENGAGES THREADS TEMPORARILY
- ACCEPTS MOST STANDARD CABLE TIES UP TO 1/2" WIDE
- MOUNTS ARE DESIGNED TO BE VERTICALLY STACKED ON A SINGLE FASTENER TO ALLOW DUAL BUNDLING - SEE VIEW B
- CHAINING OF MULTIPLE BUNDLES ON A SINGLE MOUNT IS AVAILABLE IF T250 WITH BUCKLE/MOUNT FEATURE IS USED
- OPTIONAL MOUNTING HOLE DIAMETERS ARE AVAILABLE UP TO 5/16" - CONTACT HELLERMANN TYTON FOR SPECIFIC HOLE SIZES & PRICING



Material PA666V0	Units: <b>inches</b>  Dimension without tolerances details to: .xxxx = ±.0005 .xxx = ±.005 .xx = ±.01 .x = ±.03 None = ±.06 ∠ = ±0.5°  Dimension Formatted in [mm]	The copyright of this drawing is reserved by HellermannTyton. It is issued on condition that it is not reproduced, copied, or disclosed to a third party, either wholly or in part, without the consent of HellermannTyton.	Drawn	CTF	07/12/2019	Article/Type-No	HDM250	Scale	1:1
			Approved	GAL	07/12/2019	Title	HEAVY-DUTY CABLE TIE MOUNT WITH MOUNTING HOLE	Project Number	PRP 15-0351
			<b>HellermannTyton</b> North America Email: corp@htamericas.com Web: www.hellermann.tyton.com			Drawing-No	PRODUCTION : Phase	Format	AH
						<b>15-0351-002-CSU</b>		Sheet	1/1