

CATIA V5



REFERENCE:

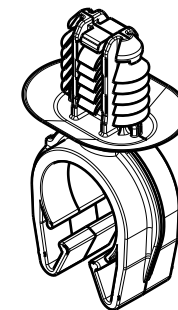
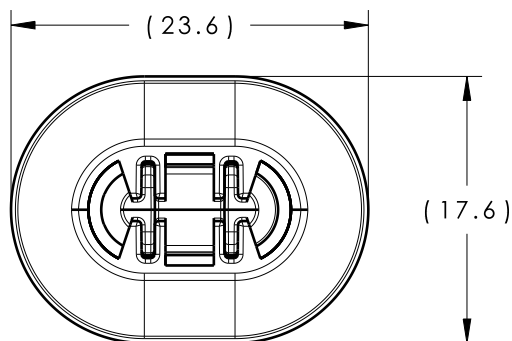
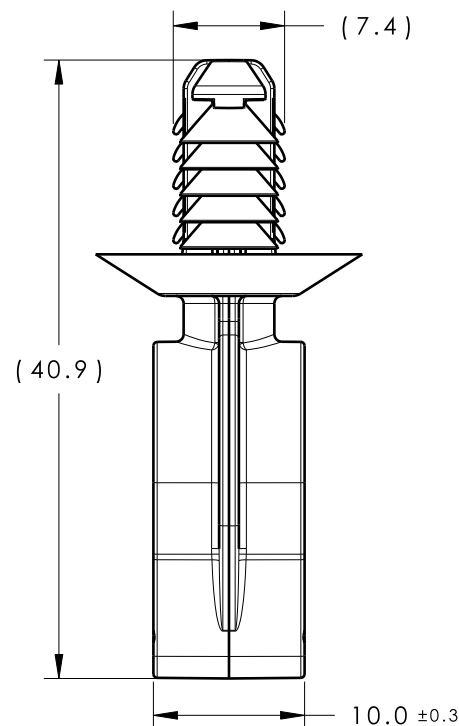
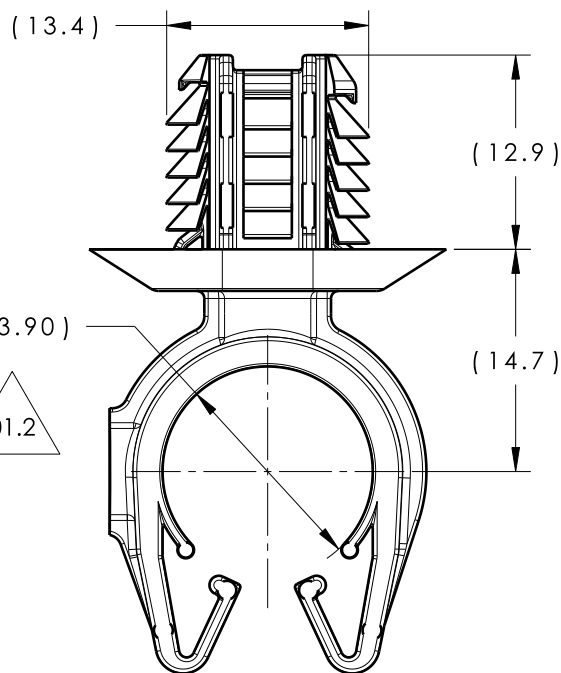
PERFORMANCE REQUIREMENTS AT DRY AS MOLDED:

1. FIR TREE PUSH IN FORCE: 45 NEWTONS (10 LBS) MAX IN EACH APPLICABLE OVAL HOLE SIZE AND A PLATE THICKNESS OF 1.8mm.
2. FIR TREE PULL OUT FORCE: 155 NEWTONS (35 LBS) MIN IN EACH APPLICABLE OVAL HOLE SIZE AND A PLATE THICKNESS OF 1.8mm.
3. SHEET METAL THICKNESS RANGE: 0.60mm - 6.75mm
4. APPLICABLE OVAL HOLE SIZES:
 - A. 6.2 X 12.2mm
 - B. 6.5 X 12.5mm
 - C. 6.5 X 13.0mm
 - D. 7.0 X 12.0mm
5. FITS USCAR MATING HOLE EWCAP -007 (NOT A TEST SPEC.)

NOTES:

1. MAXIMUM PERCENT REGRIND PERMISSIBLE: 25%
2. MAX ALLOWABLE FLASH OR MISMATCH TO BE 0.5mm.

Revision Level			Revision Record	Changed	Date	Approved	Date
Drawing	State	Part					
01.2	Design Release	-	SEE ECN# 013851	TAT	5/15/17	EJH	5/15/17

ISOMETRIC VIEW
SCALE 1:1

01.2

DIAMETER RANGE		
HARNESS	HOSE	HARD PIPE/TUBE
13.0MM-15.0MM	13.0MM-15.0MM	14.0MM-15.8MM

Material
PA66
COLOR: BLACK

01.2

Units millimeters

Tolerance defined on
each dimension

The copyright of this
drawing is reserved by
HellermannTyton. It is
issued on condition that it is
not reproduced, copied or
disclosed to a third party,
either wholly or in part,
without the consent of
HellermannTyton.

Drawn CRB 7/21/16

Approved EJH 09/30/16

HellermannTyton

North America
Email: corp@htamericas.com
Web: www.hellermann.tyton.com

Article/Type-No MOC14FTOVAL

Title
14MM (9/16") MODULAR OMEGA CLIP
WITH 6.5 X12.5MM OVAL FIR TREE

Drawing-No PROTOTYPE : Phase

16-0320-010-CSU

Scale 2:1

Project Number
16-0320

Format AH

Sheet 1/1