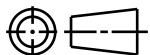


CATIA V5



## REFERENCE:

## PERFORMANCE REQUIREMENTS AT DRY AS MOLDED:

1. FIR TREE PUSH IN FORCE: 45 NEWTONS (10 LBS) MAX IN THE APPLICABLE NOMINAL HOLE SIZE AND A PLATE THICKNESS OF 1.8mm.
2. FIR TREE PULL OUT FORCE: 110 NEWTONS (25 LBS) MIN IN THE APPLICABLE NOMINAL HOLE SIZE AND A PLATE THICKNESS OF 1.8mm.
3. SHEET METAL THICKNESS RANGE: 0.60mm - 5.5mm
4. APPLICABLE HOLE SIZE:  
A. 6.5mm +0.5/-0.4
5. FITS USCAR MATING HOLE EWCAP-007 (NOT A TEST SPEC.)

04.1

## NOTES:

1. MAXIMUM PERCENT REGRIND PERMISSIBLE: 25%
2. MAX ALLOWABLE FLASH OR MISMATCH TO BE 0.5mm.

CAVITY ID NUMBER, 'TCA' AND  
PART DIAMETER TO BE LOCATED  
ON THIS SURFACE

 $\varnothing 15.80 \pm 0.20$ 

04.1

\*RECOMMENDED SIZES MAY DIFFER DEPENDING ON THE  
APPLICATION, PRODUCT REQUIREMENTS AND MATERIALS USED

\*\*PATENT PENDING 29/582,271

## DIAMETER RANGE\*

HARNESS	HOSE	HARD PIPE/TUBE
14.0MM-17.0MM	14.0MM-17.0MM	15.9MM-18.3MM

Material  
SEE CHART  
COLOR: SEE CHART

04.1

Units millimeters

Tolerance defined on  
each dimension

The copyright of this  
drawing is reserved by  
HellermannTyton. It is  
issued on condition that it is  
not reproduced, copied or  
disclosed to a third party,  
either wholly or in part,  
without the consent of  
HellermannTyton.

Drawn CRB 08/22/16  
Approved EJH 09/28/16

**HellermannTyton**

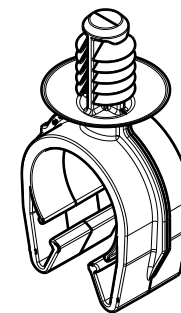
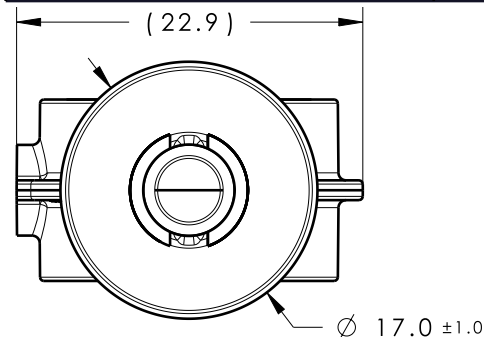
North America  
Email: corp@htamericas.com  
Web: www.hellermann.tyton.com

## Revision Level

Drawing	State	Part
04.1	Design Release	-

## Revision Record

Revision Record	Changed	Date	Approved	Date
SEE ECN# 014632	TAT	9/7/18	EJH	9/7/18



ISOMETRIC VIEW  
SCALE 1:1

