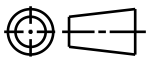
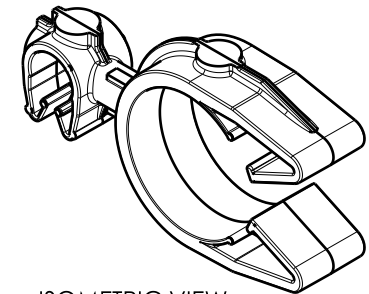
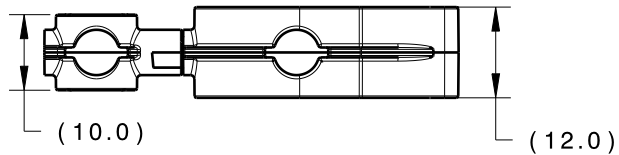


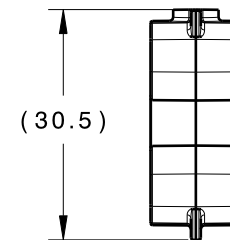
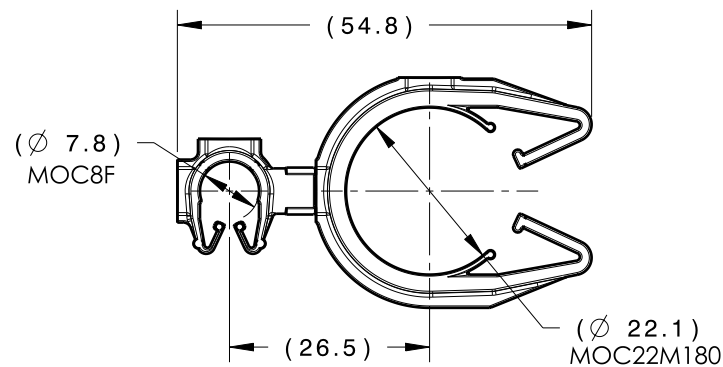
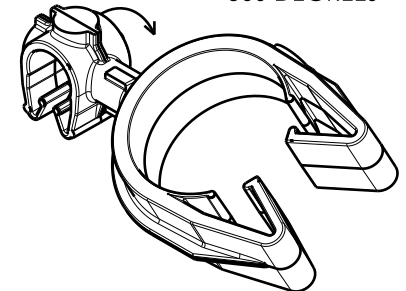
CATIA V5



Revision Level			Revision Record	Changed	Date	Approved	Date
Drawing	State	Part					
00.1	Design Release	-	SEE ECN# 014773	TAT	11/30/2018	EJH	11/30/2018



ISOMETRIC VIEW

CLIPS ROTATE
360 DEGREESISOMETRIC VIEW
ROTATED

TYPE	MOC8F	MOC22M180
HARNESS	7.5MM - 8.5MM	20.0MM - 24.0MM
HOSE	7.0MM - 8.5MM	20.0MM - 24.0MM
HARD PIPE/TUBE	7.9MM - 8.5MM	22.0MM - 25.0MM

*RECOMMENDED SIZES MAY DIFFER DEPENDING ON THE APPLICATION , PRODUCT REQUIREMENTS AND MATERIALS USED

**PATENT PENDING 29/582,271

GLOBAL PART DESCRIPTION		MOC8F			MOC22M180**			
		DRAWING	MATERIAL	COLOR	DRAWING	MATERIAL	COLOR	
MOC8FMOC22M180-PA66HIRHSUV-BK		16-0316-000-CSU	PA66HIRHSUV	BLACK	16-0323-000-CSU	PA66HIRHSUV	BLACK	
Material SEE CHART COLOR: SEE CHART	Units millimeters	The copyright of this drawing is reserved by HellermannTyton. It is issued on condition that it is not reproduced, copied or disclosed to a third party, either wholly or in part, without the consent of HellermannTyton.	Drawn	CJR	8/28/18	Article/Type-No MOC8FMOC22M180		Scale 1:1
	Tolerance defined on each dimension		Approved	TAT	8/31/18	Title 8MM MOC COUPLED TO A 22MM MOC M180		Project Number 16-0330
			<div>HellermannTyton</div> <div>North America Email: corp@htamericas.com Web: www.hellermann.tyton.com</div>			Drawing-No PRODUCTION : Phase		Format AH
						<div>16-0330-274-CSU</div>		Sheet 1/1