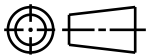


CATIA V5



Revision Level

Drawing

State

Part

02.1

Design Release

C

Revision Record

Changed

Date

Approved

Date

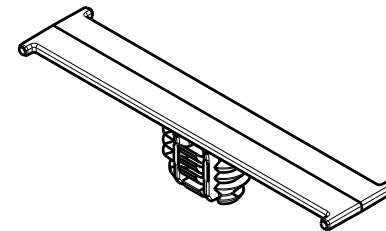
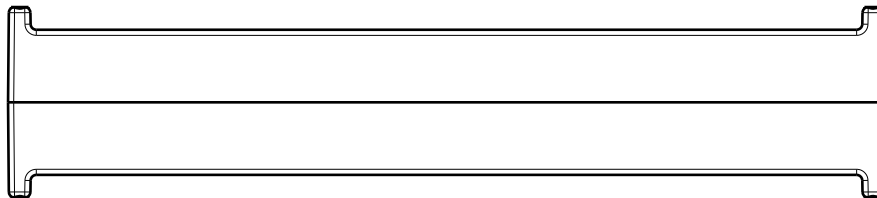
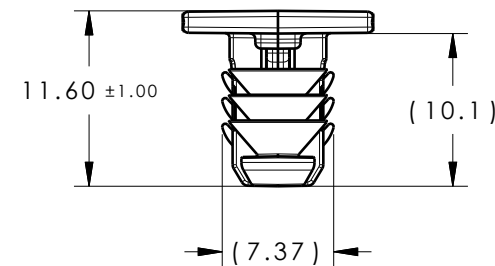
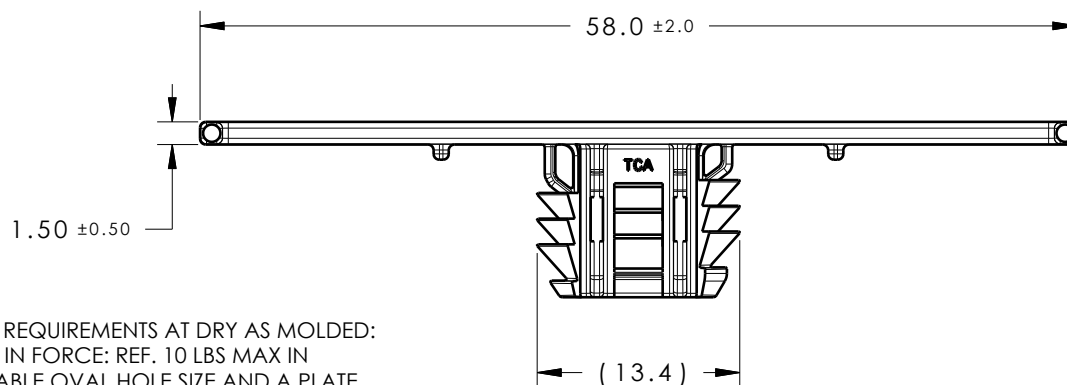
SEE ECN# 311527

KOR

10/09/24

EJF

10/09/24

ISOMETRIC VIEW
(SCALE 1:1)

REFERENCE:

PERFORMANCE REQUIREMENTS AT DRY AS MOLDED:

1. FIR TREE PUSH IN FORCE: REF. 10 LBS MAX IN EACH APPLICABLE OVAL HOLE SIZE AND A PLATE THICKNESS OF 1.8mm
2. FIR TREE PULL OUT FORCE: REF. 25 LBS MIN IN EACH APPLICABLE OVAL HOLE SIZE AND A PLATE THICKNESS OF 1.8mm
3. SHEET METAL THICKNESS RANGE: 0.60mm - 2.5mm
4. APPLICABLE OVAL HOLE SIZES:
 - A. 6.2 X 12.2mm
 - B. 6.5 x 12.5mm
 - C. 6.5 x 13.0mm
 - D. 7.0 x 12.0mm

02.1

Material
PA66HIRHS
COLOR: NATURAL

Units millimeters

Tolerance defined on
each dimension

The copyright of this
drawing is reserved by
HellermannTyton. It is
issued on condition that it is
not reproduced, copied or
disclosed to a third party,
either wholly or in part,
without the consent of
HellermannTyton.

Drawn

CJR

6/14/16

Approved

SJA

6/14/16

HellermannTyton

North America
Email: corp@htamericas.com
Web: www.hellermann.tyton.com

Article/Type-No BCSFTOVAL

Scale 2:1

Title
TAPE CLIP WITH SHORT OVAL FIR TREE

Project Number
16-0407

Drawing-No PRODUCTION : Phase

16-0407-001-CSU

Format AH

Sheet 1/1