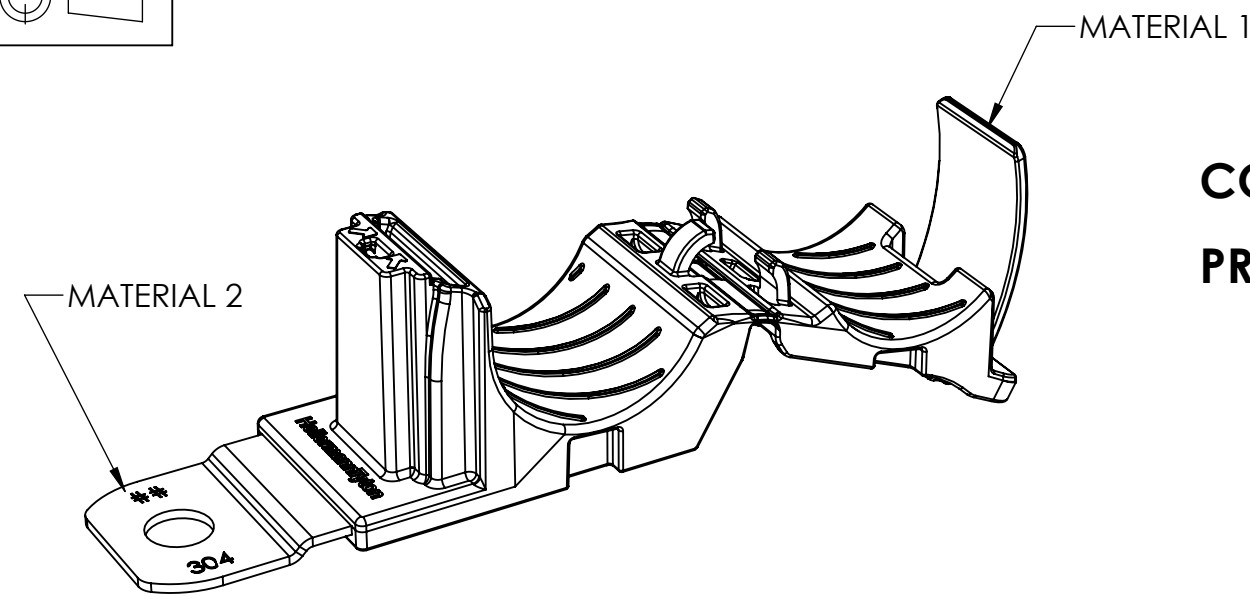
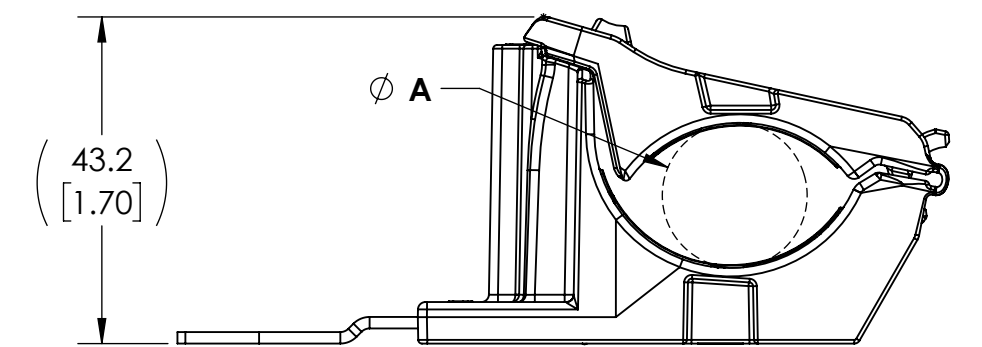
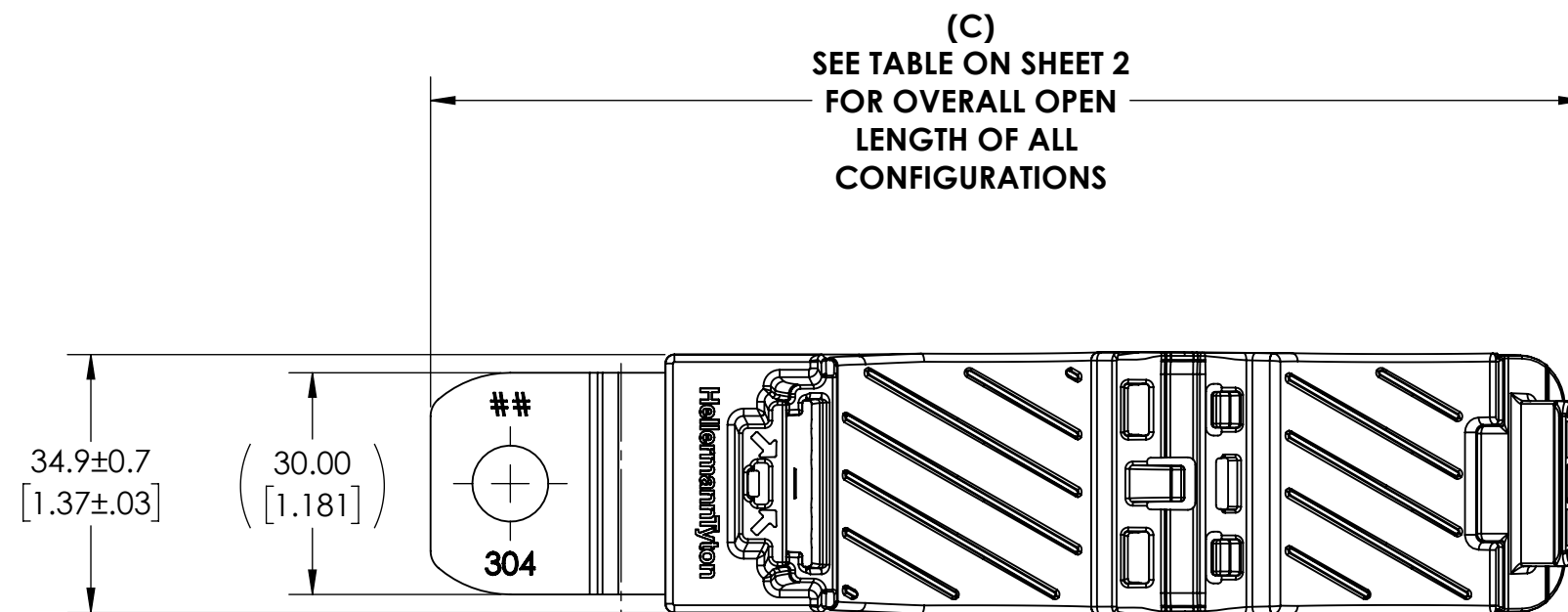


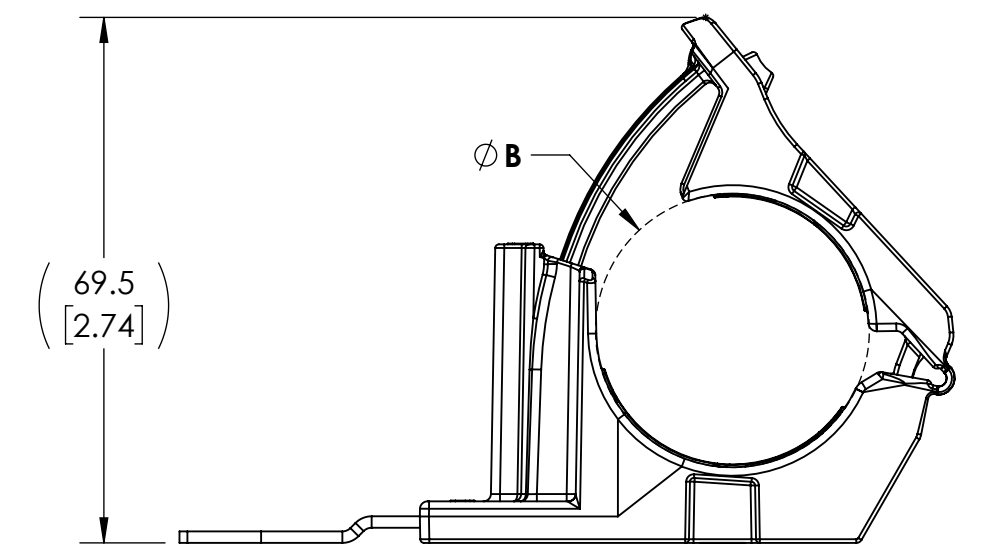
Revision level			Revision Record	Changed	Date	Approved	Date
Drawing	State	Part					
06.3	Design Release	-	SEE ECN# 016631	RLV	8/11/2021	MHT	8/11/2021



CONFIGURATION 1 SHOWN
PRODUCT SHIPPED IN CLAMP OPEN POSITION



MINIMUM BUNDLE DIAMETER



MAXIMUM BUNDLE DIAMETER

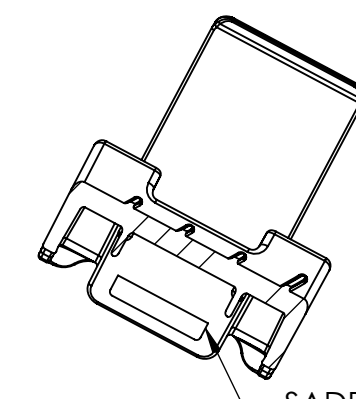
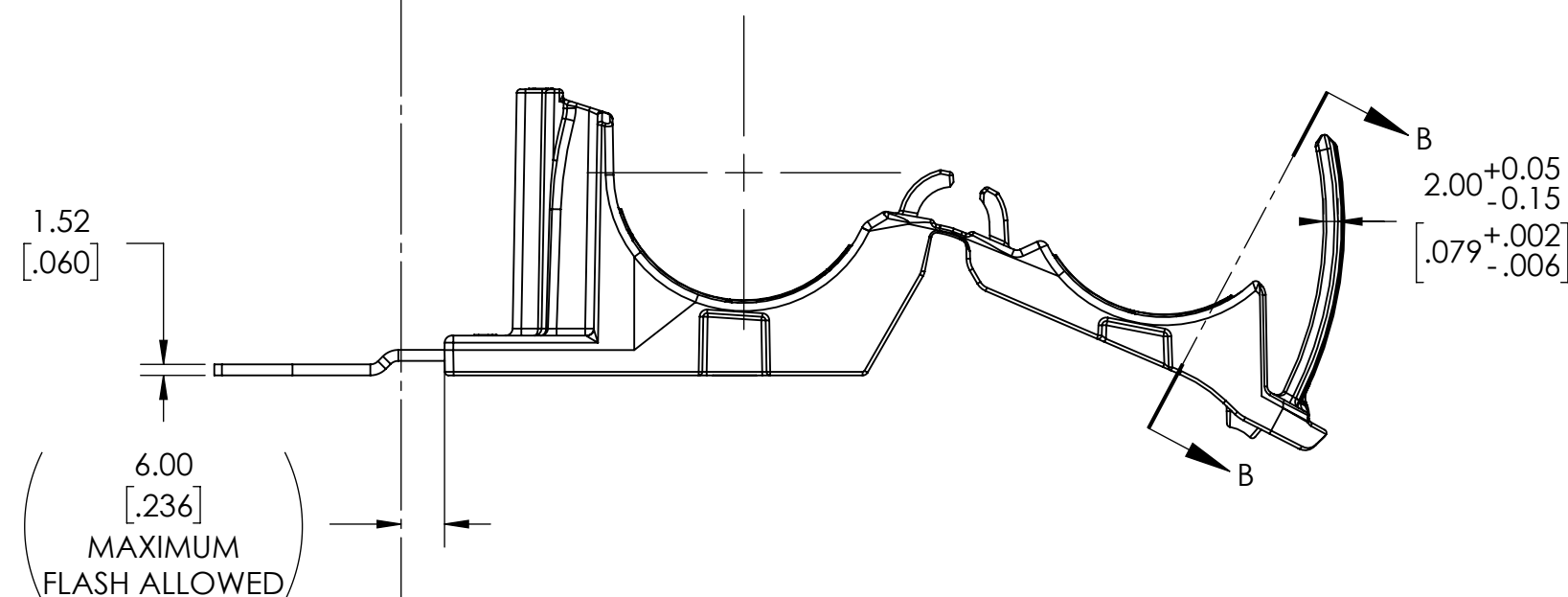
INITIAL MOLD VALIDATION:
 DRY AS MOLDED WITH $\leq 0.5\%$ MOISTURE CONTENT:

1. ITS-0003 RATCHET CLAMP SOLID MANDREL TEST:
EXCEEDED 445 NEWTONS (100 LBS) MIN AT A
NOMINAL BUNDLE DIAMETER OF 25.40 [1.000]
TESTING ONLY REQUIRED OF CONFIGURATION
*RCC180SM10SS, *RCC180LM10SS, AND
*RCC90LM10SS
*TESTING CAN BE SUBSTITUTED WITH M6, M8, M12
VERSION MOUNTING HOLES
2. ITS-0008 RATCHET CLAMP CLOSE & RELEASE TEST:
EXCEEDED 445 NEWTONS (100 LBS) MIN AT A
NOMINAL BUNDLE DIAMETER OF 25.40 [1.000]
AFTER CLOSING AND RELEASING 40 TIMES
3. ITS-0014 RATCHET CLAMP LOW TEMP HINGE TEST:
NO DAMAGE OCCURRED AFTER BENDING LIVING
HINGE 40 TIMES AT -40°C

PERFORMANCE REQUIREMENTS:
 DRY AS MOLDED WITH $\leq 0.5\%$ MOISTURE CONTENT:

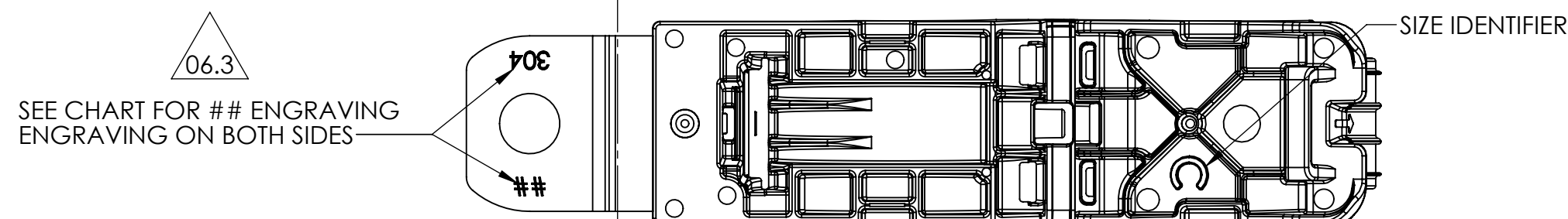
4. ITS-0001 RATCHET CLAMP SPLIT MANDREL TEST:
445 NEWTONS (100 LBS) MIN AT A NOMINAL
BUNDLE DIAMETER OF 25.40 [1.000]
5. MAXIMUM PERCENT REGRIND PERMISSIBLE: 25%
6. MAXIMUM ALLOWABLE FLASH OR MISMATCH TO
BE: 0.25mm

NOTE: TESTING #2, #3 AND #4 CAN BE DONE ON ANY TYPE NUMBER AND WILL APPLY TO ALL OTHER TYPE NUMBERS IN THE TABLE ON SHEET 2



SECTION B-B

SADDLE OPENING
ACCOMMODATES
STRAPS UP TO 13.2mm
WIDE AND 2.1mm THICK

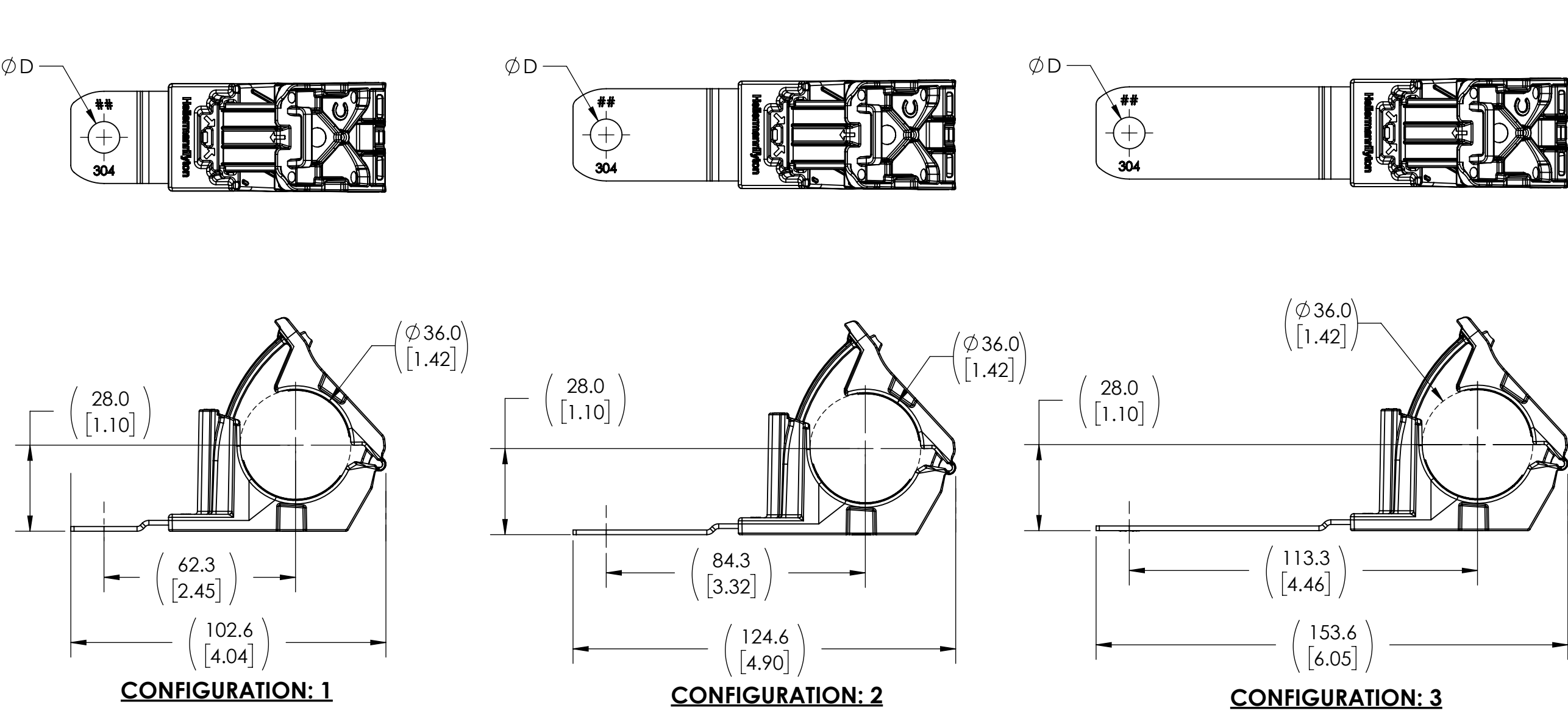


BUNDLE TYPES	A MINIMUM DIAMETER	B MAXIMUM DIAMETER
SOFT	19.4 [.76]	36.0 [1.42]
HARD	18.6 [.73]	35.2 [1.39]

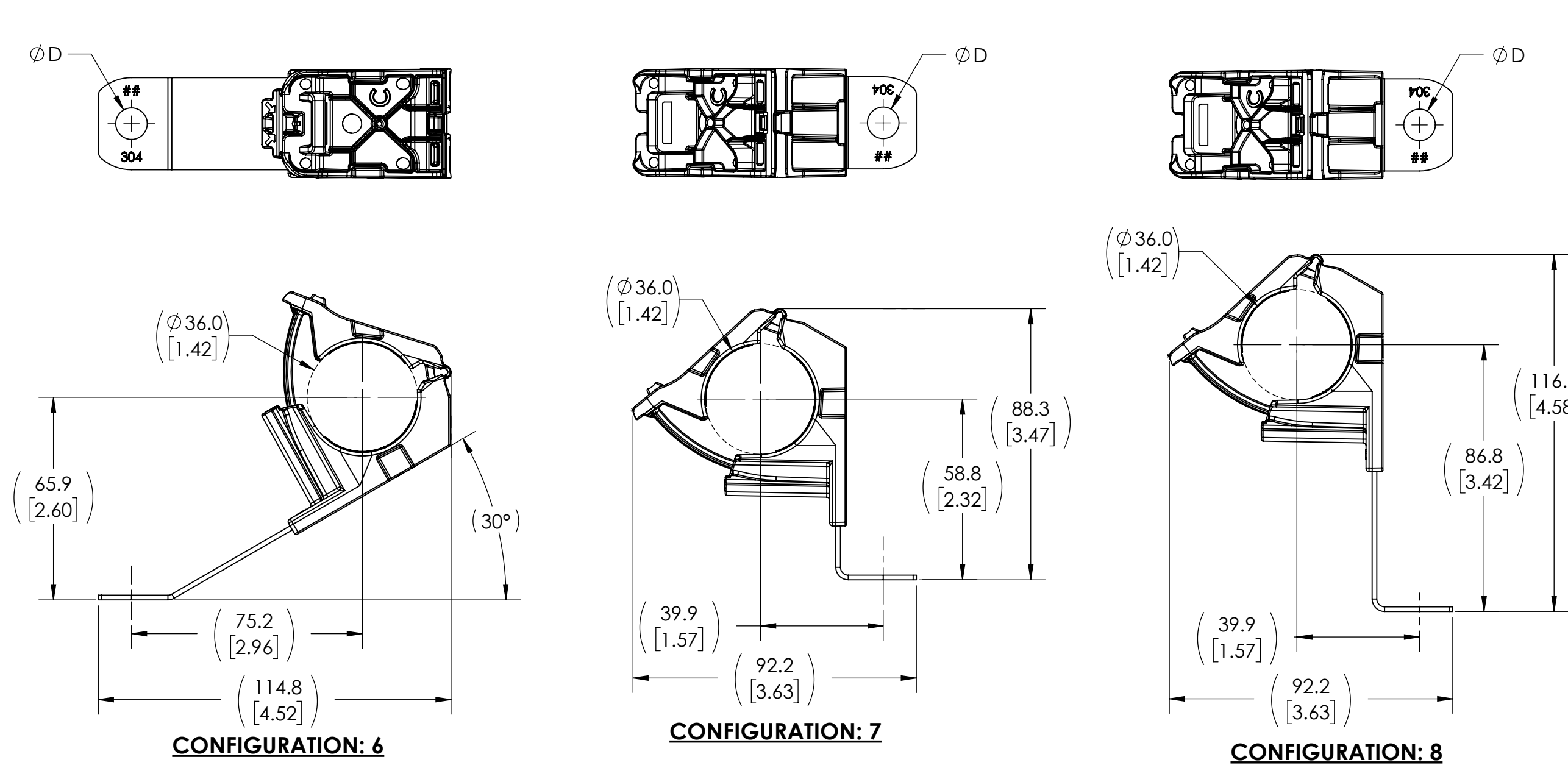
Notes	Material 1. PA66HIRHSUV 2. STAINLESS STEEL	Units: millimeters Dimension without tolerances details to: .XXX = ±.013 .XX = ±.13 .X = ±.3 None = ±.8 ∠ = ±0.5° Dimension Formatted mm/in	The copyright of this drawing is reserved by HellermannTyton. It is issued on condition that it is not reproduced, copied, or disclosed to a third party, either wholly or in part, without the consent of HellermannTyton.	Drawn	CRB	06/28/16	Article/Type-No	SEE CHART (SHEET 2)	Scale	1:1
				Approved	MHT	06/28/16	Title	RCC RATCHET P CLAMP, SIZE C, CLAMP RANGE 19.4 TO 36.0, STAINLESS STEEL	Project Number	PRP16-1242
				<div>HellermannTyton North America Email: corp@htamericas.com Web: www.hellermann.tyton.com</div>			Drawing-No	PRODUCTION : Phase	Format	C
							16-1242-103-CSU			Sheet



Revision level			Revision Record	Changed	Date	Approved	Date
Drawing	State	Part					
06.3	Design Release	-	SEE ECN# 016631	RLV	8/11/2021	MHT	8/11/2021



ALL VIEWS IN MAXIMUM BUNDLE DIAMETER
PRODUCT SHIPPED IN CLAMP OPEN POSITION



CONFIGURATION	DESCRIPTION	D ±0.13	TYPE	## ENGRAVING	C - OVERALL OPEN LENGTH REFERENCE (SEE SHEET 1)
1	180° SHORT	6.50 [.256]	RCC180SM6SS	6	156.1 [6.15]
		8.31 [.327]	RCC180SM8SS	8	
		10.29 [.405]	RCC180SM10SS	10	
		12.95 [.510]	RCC180SM12SS	12	
2	180° MEDIUM	6.50 [.256]	RCC180MM6SS	6	178.1 [7.01]
		8.31 [.327]	RCC180MM8SS	8	
		10.29 [.405]	RCC180MM10SS	10	
		12.95 [.510]	RCC180MM12SS	12	
3	180° LONG	6.50 [.256]	RCC180LM6SS	6	207.1 [8.15]
		8.31 [.327]	RCC180LM8SS	8	
		10.29 [.405]	RCC180LM10SS	10	
		12.95 [.510]	RCC180LM12SS	12	
4	15° SHORT	6.50 [.256]	RCC15SM6SS	6	164.0 [6.46]
		8.31 [.327]	RCC15SM8SS	8	
		10.29 [.405]	RCC15SM10SS	10	
		12.95 [.510]	RCC15SM12SS	12	
5	30° SHORT	6.50 [.256]	RCC30SM6SS	6	161.9 [6.37]
		8.31 [.327]	RCC30SM8SS	8	
		10.29 [.405]	RCC30SM10SS	10	
		12.95 [.510]	RCC30SM12SS	12	
6	30° LONG	6.50 [.256]	RCC30LM6SS	6	190.4 [7.50]
		8.31 [.327]	RCC30LM8SS	8	
		10.29 [.405]	RCC30LM10SS	10	
		12.95 [.510]	RCC30LM12SS	12	
7	90° SHORT	6.50 [.256]	RCC90SM6SS	6	141.8 [5.58]
		8.31 [.327]	RCC90SM8SS	8	
		10.29 [.405]	RCC90SM10SS	10	
		12.95 [.510]	RCC90SM12SS	12	
8	90° LONG	6.50 [.256]	RCC90LM6SS	6	169.8 [6.69]
		8.31 [.327]	RCC90LM8SS	8	
		10.29 [.405]	RCC90LM10SS	10	
		12.95 [.510]	RCC90LM12SS	12	

Notes	Material 1. PA66HIRHSUV 2. STAINLESS STEEL	Units: millimeters Dimension without tolerances details to: .XXX = ±.013 .XX = ±.13 .X = ±.3 None = ±.8 ∠ = ±0.5° Dimension Formatted mm/[in]	The copyright of this drawing is reserved by HellermannTyton. It is issued on condition that it is not reproduced, copied, or disclosed to a third party, either wholly or in part, without the consent of HellermannTyton.	Drawn	CRB	06/28/16	Article/Type-No	SEE CHART	Scale	2:3
				Approved	MHT	06/28/16	Title	RCC RATCHET P CLAMP, SIZE C, CLAMP RANGE 19.4 TO 36.0, STAINLESS STEEL	Project Number	PRP16-1242
				<div>HellermannTyton</div> <div>North America</div> <div>Email: corp@htamericas.com</div> <div>Web: www.hellermann.tyton.com</div>			Drawing-No	PRODUCTION : Phase	Format	C
							16-1242-103-CSU			Sheet