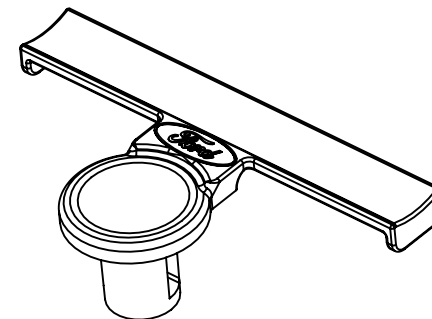
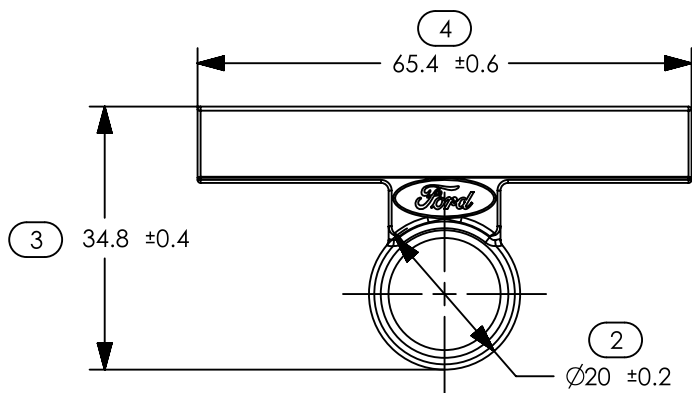
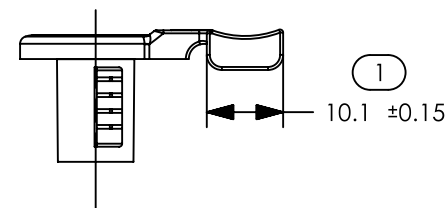
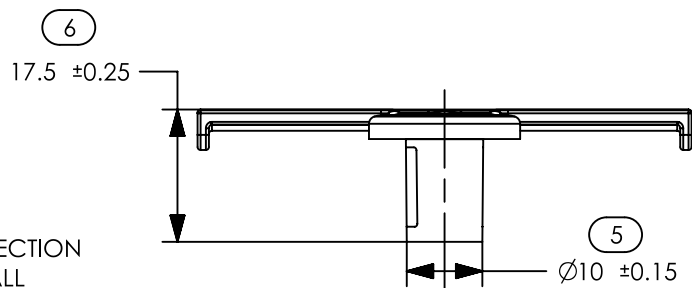


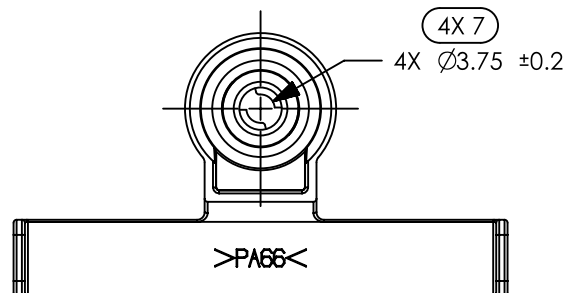
MISSING SYMBOLS NO MISSING SYMBOL NUMBERS	Revision Level			Revision Record	Changed	Date	Approved	Date
	Drawing	State	Part					
	04.1	Design Release	-	SEE ECN# 310828	KOR	02/14/24	EJH	02/14/24




ISOMETRIC VIEW



1. UNLESS OTHERWISE SPECIFIED AND/OR INDICATED:
DIMENSIONS ARE TO FACE OF VIEW SHOWN AND
AUTOMATICALLY ROUNDED BY COMPUTER FOR INSPECTION
(SEE MATH MODEL FOR PRECISE DIMENSIONS). FOR ALL
OTHER DIMENSIONS NOT SHOWN BUT REQUIRED FOR TOOL
BUILD, SEE MATH MODEL FOR PRECISE TOOL PATH DATA.
2. MATERIAL RECYCLING CODE PER ISO 11469. (2.3)X(0.1) RAISED
CHARACTERS AS SHOWN TO BE LOCATED ON ANY EXTERIOR SURFACE.
OPTIONAL CONSTRUCTION TO BE NO MATERIAL RECYCLING CODE.
3. (2.3)X(0.1) RAISED FOR CORPORATE BRAND TO BE LOCATED ON ANY
EXTERIOR SURFACE, PREFERABLY VISIBLE AT AT FINAL ASSEMBLY.
OPTIONAL CONSTRUCTION NO LOGO.
4. DESIGNED TO FIT M5 STUD.



SYMBOL DEFINITION

A DIMENSION WITHOUT AN INSPECTION REPORT
SYMBOL  DOES NOT REQUIRE INSPECTION.
IT MAY BE CONTROLLED ON THE INDIVIDUAL
COMPONENT DRAWING.

TOTAL NO. OF INSPECTIONS REQUIRED	10
LAST NO. USED	7

PART DESCRIPTION	PART NUMBER	MATERIAL	COLOR
SOCSB5	15479344	PA66HIRHSUV	BLACK

THIS DRAWING SUPERCEDES DELPHI DWG: 15479344 REV 01

Material SEE CHART	Units millimeters	The copyright of this drawing is reserved by HellermannTyton. It is issued on condition that it is not reproduced, copied or disclosed to a third party, either wholly or in part, without the consent of HellermannTyton.	Drawn	NHK	01/09/19	Article/Type-No	SEE CHART	Scale	1:1
	Tolerance defined on each dimension		Approved	EJF	01/09/19	Title	MOUN CLIP TAPE ON PUSH NUT M5	Project Number	17-0735
			HellermannTyton North America Email: corp@htamericas.com Web: www.hellermann.tyton.com			Drawing-No	PRODUCTION : Phase	Format	AH
						17-0735-001-CSU		Sheet	1 / 1