

### REFERENCE NOTES:

1. UNLESS OTHERWISE SPECIFIED AND/OR INDICATED:

DIMENSIONS ARE TO FACE OF VIEW SHOWN AND  
AUTOMATICALLY ROUNDED BY COMPUTER FOR  
INSPECTION. FOR ALL OTHER DIMENSIONS NOT  
SHOWN, SEE MATH MODEL.

2. DRAWING TO BE INTERPRETED IN ACCORDANCE WITH ANSI Y14.5M-1994 AS AMENDED BY THE GW GLOBAL DIMENSIONING AND TOLERANCING ADDENDUM-1997. ALL GEOMETRIC TOLERANCES AND RELATED DATUMS APPLY RFS. RULE #1 (PERFECT FORM AT MMC) DOES NOT APPLY WHEN RELATIONSHIP BETWEEN FEATURES IS ESTABLISHED BY ORIENTATION OR LOCATION TOLERANCES. SEPARATE POSITION CALLOUTS MAY BE GAGED SEPARATELY, REGARDLESS OF DATUM REFERENCE. ALL DIMENSIONS ARE IN MILLIMETERS.

3. (2.3) X (0.1) RAISED DELPHI CORPORATE BRAND TO BE LOCATED AS SHOWN ON ANY EXTERIOR SURFACE, PREFERABLY VISIBLE AT FINAL ASSEMBLY. OPTIONAL CONSTRUCTION TO BE "PED" OR NO LOGO.

4. MATERIAL RECYCLING CODE PER ISO 11469.  
(0.9) X (0.1) RAISED CHARACTERS AS SHOWN  
TO BE LOCATED ON ANY EXTERIOR SURFACE.  
OPTIONAL CONSTRUCTION TO BE NO MATERIAL  
RECYCLING CODE.

5. THIS PRODUCT IS NOT CATEGORIZED AS AN APPEARANCE ITEM, MINOR IMPERFECTIONS INCLUDING, BUT NOT LIMITED TO, FLOW MARKS, COLOR BLEMISHES, GATE VESTIGE, AND SOFT FLASH THAT DO NOT AFFECT THE FIT, FORM, OR FUNCTION OF THE PART ARE PERMISSIBLE PER SPEC DPNP-4.7-CS-01.

6. THIS COMPONENT IS DESIGNED TO MOUNT ON BRACKET 15355201 OR EQUIVALENT.

7. MATING COMPONENTS OR EQUIVALENT:

CONNECTOR - 15369350

### PERFORMANCE REQUIREMENTS:

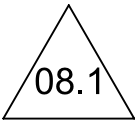
1. APPLICABLE RECTANGULAR HOLE SIZE:


8 +0.2/-0 MM X 15 +0.2/-0 MM

- ## 2. SHEET METAL THICKNESS RANGE:

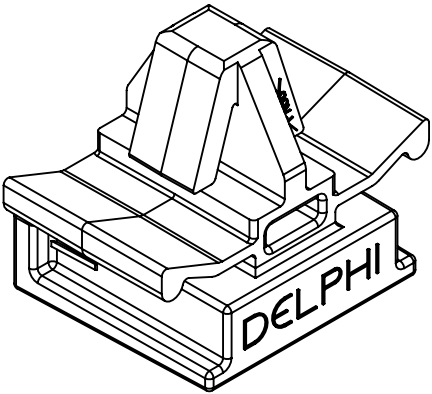
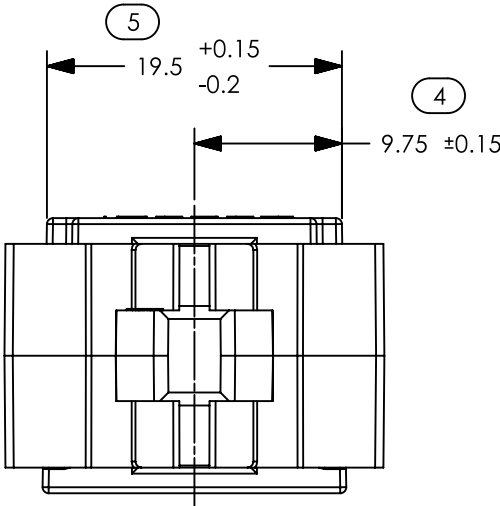
0.8 - 2 MM THICK STOCK.

PART DESCRIPTION	PART NUMBER	TYPE	MATERIAL	COLOR
CCA8X15PT2	15355593	101	PA66 SAME AS POLYAMIDE 66	BLACK
CCA8X15PT2	13947607	102	POLYPROPYLENE	BLACK

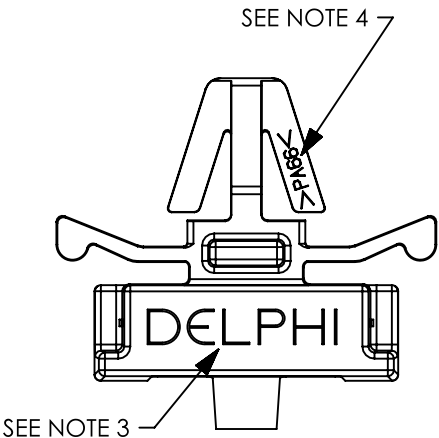
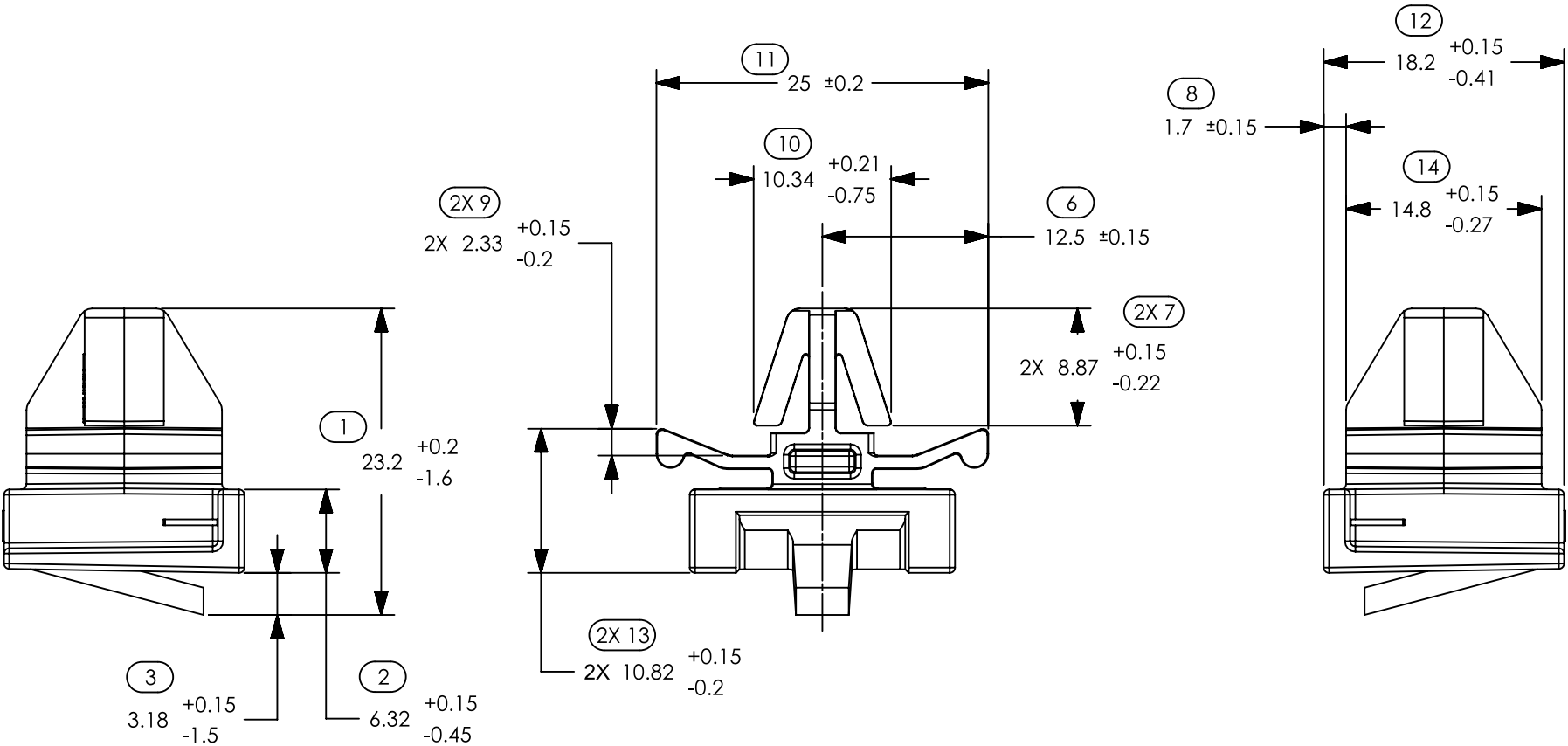


SYMBOL DEFINITION		
A DIMENSION WITHOUT AN INSPECTION REPORT SYMBOL  DOES NOT REQUIRE INSPECTION. IT MAY BE CONTROLLED ON THE INDIVIDUAL COMPONENT DRAWING.	TOTAL NO. OF INSPECTIONS REQUIRED	17
	LAST NO. USED	14

MISSING SYMBOLS	Revision Level			Revision Record	Changed	Date	Approved	Date
NO MISSING SYMBOL NUMBER	Drawing	State	Part					
	08.1	Design Release	-	SEE ECN# 310817	KOR	02/12/24	EJH	02/12/24



ISOMETRIC VIEW  
SCALE 2:1



DIMENSIONS ENCLOSED IN ( ) INDICATE REFERENCE DIMENSIONS AND NO TOLERANCE LIMITS ARE ESTABLISHED.						THIS DRAWING SUPERCEDES DELPHI DWG: 13952704 REV 05			
Material  SEE CHART	Units <b>millimeters</b>	The copyright of this drawing is reserved by HellermannTyton. It is issued on condition that it is not reproduced, copied or disclosed to a third party, either wholly or in part, without the consent of HellermannTyton.	Drawn	TWH	04/06/17	Article/Type-No    SEE CHART		Scale     2 : 1	
	Tolerance defined on each dimension		Approved	EJH	04/25/17	Title  TAXI MOUN ATTCH CLIP   ROSEBUD		Project Number  17-0803	
			<div>HellermannTyton</div> <div>North America</div> <div>Email: corp@htamericas.com</div> <div>Web: www.hellermann.tyton.com</div>			Drawing-No	PRODUCTION : Phase	Format     B	
						<div>17-0803-001-CSU</div>		Sheet    1 / 1	