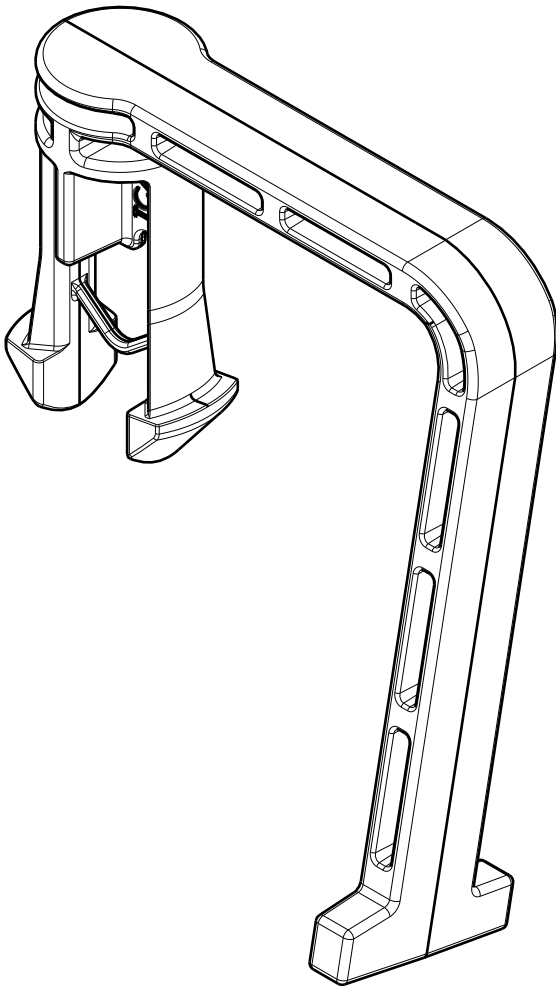
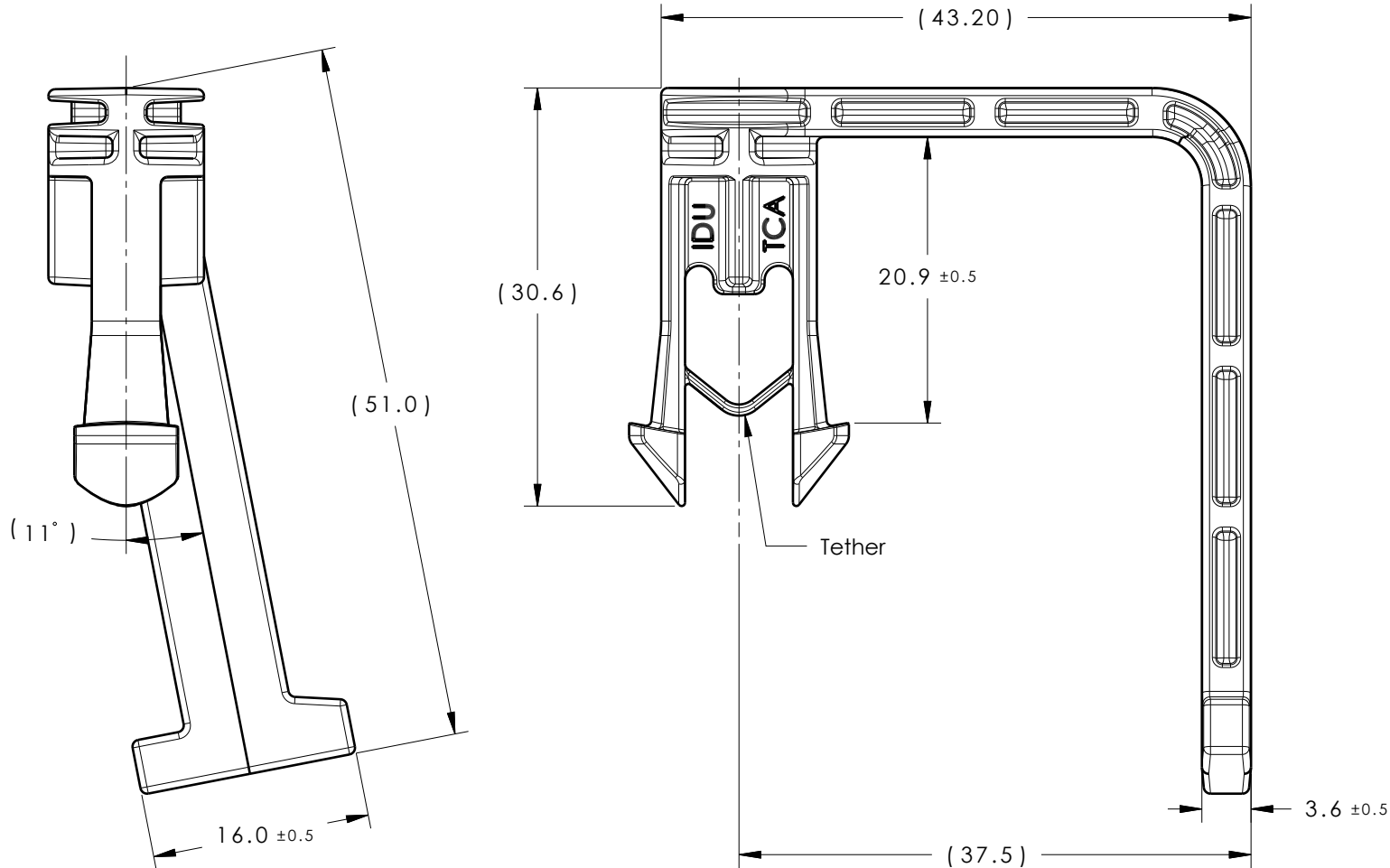
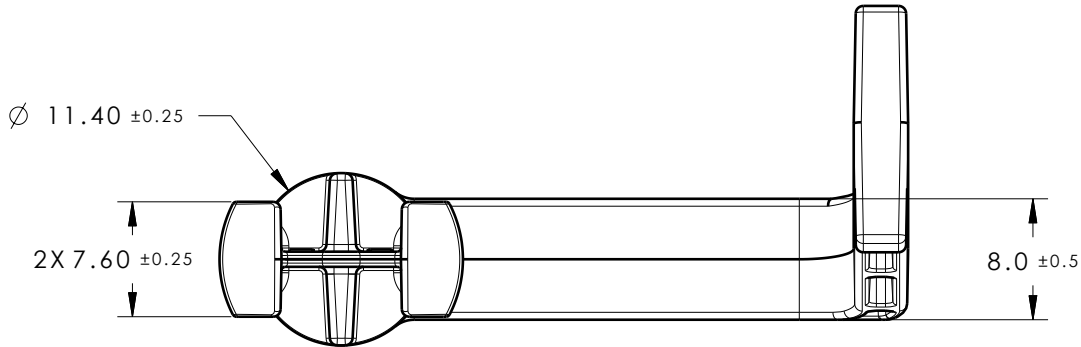


Revision Level			Revision Record	Changed	Date	Approved	Date
Drawing	State	Part					
05.2	Design Release	-	See ECN# 311833	Patil	2025/01/30	Haftarski	2025/01/30



Isometric View



Reference:
Performance requirements at dry as molded:

- Mount push in force: 45 newtons (10 lbs) max in the applicable nominal hole size and a plate thickness of 14.25mm.
- Mount pull out force: 110 newtons (25 lbs) min in the applicable nominal hole size and a plate thickness of 14.25mm.
- Sheet metal thickness range: 13.5mm - 15.0mm
- Applicable hole size:
 - 12.35mm +/-0.65
- Maximum percent regrind permissible: 25%
- Max allowable flash to be: 0.25 mm
- Max allowable mismatch to be: 0.1 mm
- If the tether is fractured the part will still function as intended.
- Sink marks are acceptable on tape bar if they do not affect fit, form, or function.

Material See chart Color: See chart	Units millimeters Tolerance defined on each dimension	The copyright of this drawing is reserved by HellermannTyton. It is issued on condition that it is not reproduced, copied or disclosed to a third party, either wholly or in part, without the consent of HellermannTyton.	Drawn	Elwart	2017/11/07	Article/Type-No	BCATC90DEG		Scale	2:1
			Approved	Haftarski	2017/11/07	Title	Transmission Mount With 90 deg Tape Bar		Project Number 17-2489	
			HellermannTyton North America Email: corp@htamericas.com Web: www.hellermann.tyton.com			Drawing-No	PRODUCTION : Phase		Format	B
						17-2489-001-CSU		Sheet	1/1	

05.2		
Part Description	Material	Color
BCATC90DEG-PPS-SR	PPS	Silver