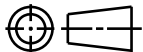
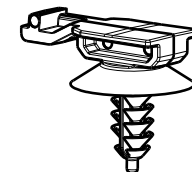
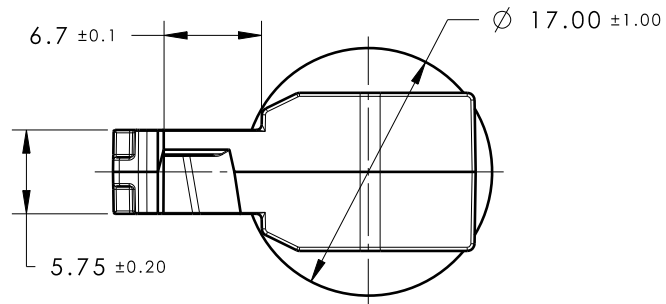
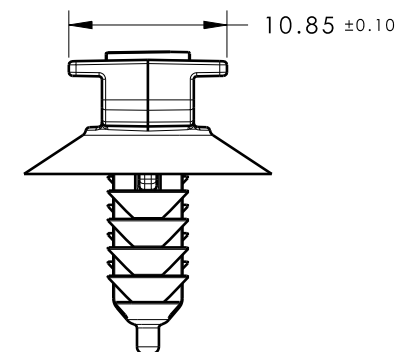
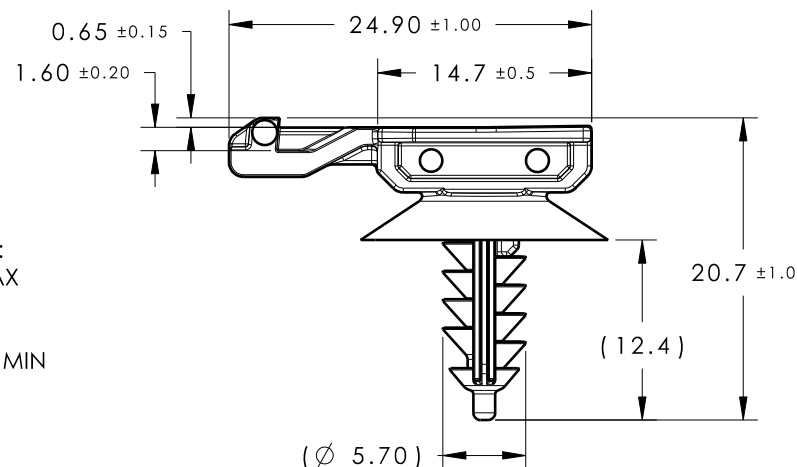


CATIA V5



Revision Level			Revision Record	Changed	Date	Approved	Date
Drawing	State	Part					
02.1	DESIGN RELEASE		SEE ECN# 014777	JMC	12/03/18	CJR	12/03/18

ISOMETRIC VIEW
SCALE 1;1

REFERENCE:

PERFORMANCE REQUIREMENTS AT DRY AS MOLDED:

1. FIR TREE PUSH IN FORCE: 45 NEWTONS (10 LBS) MAX
IN THE APPLICABLE NOMINAL HOLE SIZE

AND A PLATE THICKNESS OF 1.8MM

2. FIR TREE PULL OUT FORCE: 110 NEWTONS (25 LBS) MIN
IN THE APPLICABLE NOMINAL HOLE SIZE

AND A PLATE THICKNESS OF 1.8MM

3. APPLICABLE HOLE SIZE:

A. M6 THREADED

B. $\varnothing 5.0 \pm 0.2 \text{ mm}$ 4. DESIGNED TO MEET PUSH ON/PULL OFF FORCES
OF SAE/USCAR-25. FITS INTO USCAR CLIP SLOT SPECIFICATION EWCAP-005-11
(NOT A TEST SPEC.)

GLOBAL PART DESCRIPTION

MATERIAL

COLOR

CC11FTM6-PA46-BN

PA46

BROWN

Material

SEE TABLE

Units millimeters

Tolerance defined on
each dimension

The copyright of this drawing is reserved by HellermannTyton. It is issued on condition that it is not reproduced, copied or disclosed to a third party, either wholly or in part, without the consent of HellermannTyton.

Drawn

CJR

11/7/17

Approved

KVH

2/5/18

HellermannTyton

North America
Email: corp@htamericas.com
Web: www.hellermann.tyton.com

Article/Type-No

CC11FTM6

Scale

2:1

Title

M6 FIR TREE WITH EWCAP-005-11 CLIP
SLOT

Project Number

18-0396

Drawing-No

PRODUCTION : Phase

18-0396-002-CSU

Format

AH

Sheet

1/1