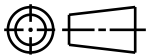
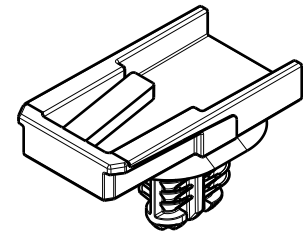
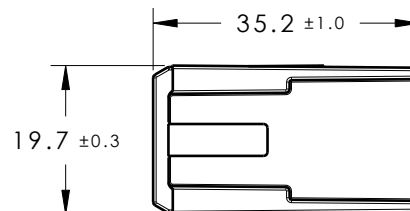


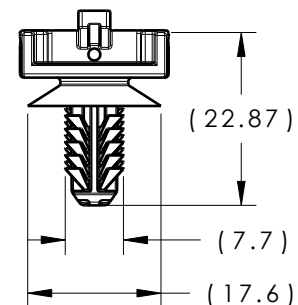
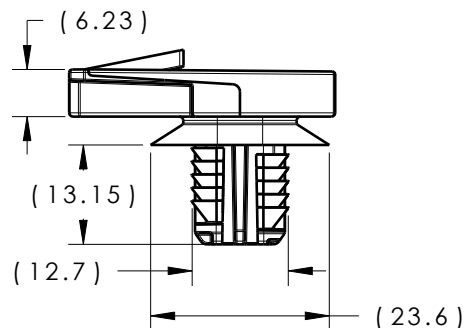
CATIA V5



Revision Level			Revision Record	Changed	Date	Approved	Date
Drawing	State	Part					
00.2	Design Release		SEE ECN# 014547	HDC	08/06/18	NHK	08/06/18



ISOMETRIC VIEW



REFERENCE:

PERFORMANCE REQUIREMENTS AT DRY AS MOLDED:

1. FIR TREE PUSH IN FORCE: 45 NEWTONS (10 LBS) MAX IN EACH APPLICABLE OVAL HOLE SIZE AND A PLATE THICKNESS OF 1.8mm.
2. FIR TREE PULL OUT FORCE: 110 NEWTONS (25 LBS) MIN IN EACH APPLICABLE OVAL HOLE SIZE AND A PLATE THICKNESS OF 1.8mm.
3. SHEET METAL THICKNESS RANGE: 0.60mm - 6.75mm
4. APPLICABLE OVAL HOLE SIZES:

- A. 6.2 X 12.2mm
- B. 6.5 X 12.5mm
- C. 6.5 X 13.0mm
- D. 7.0 X 12.0mm

5. MAXIMUM PERCENT REGRIND PERMISSIBLE: 25%

6. MAX ALLOWABLE FLASH TO BE: 0.25mm

7. MAX ALLOWABLE MISMATCH TO BE: 0.1mm

GLOBAL PART DESCRIPTION		MATERIAL	COLOR
CCOVAL23OS10-PA66HIRHS-BK		PA66HIRHS	BLACK

Material SEE CHART COLOR: SEE CHART	Units millimeters	The copyright of this drawing is reserved by HellermannTyton. It is issued on condition that it is not reproduced, copied or disclosed to a third party, either wholly or in part, without the consent of HellermannTyton.	Drawn	HDC	03/23/18	Article/Type-No	CCOVAL23OS10		Scale	1:1		
	Tolerance defined on each dimension		Approved	EJH	03/23/18	Title	23mm CONNECTOR CLIP W/ 10mm FTOVAL		Project Number			
			<div>HellermannTyton</div> <div>North America Email: corp@htamericas.com Web: www.hellermann.tyton.com</div>					Drawing-No	DEVELOPMENT : Phase		Format	AH
								<div>18-1177-001-CSU</div>				