



| MISSING SYMBOLS NO MISSING SYMBOL NUMBERS | Revision Level | | | Revision Record | Changed | Date | Approved | Date |
|--|----------------|----------------|------|-----------------|---------|----------|----------|----------|
| | Drawing | State | Part | | | | | |
| | 02.1 | Design Release | - | SEE ECN# 014613 | NHK | 08/24/18 | EJF | 08/24/18 |

REFERENCE NOTES:

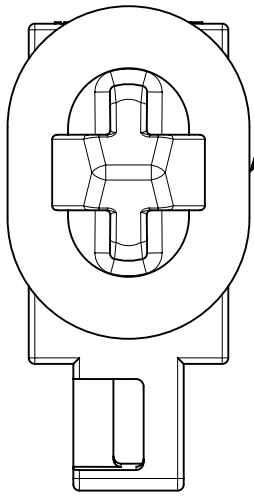
1. UNLESS OTHERWISE SPECIFIED AND/OR INDICATED:

DIMENSIONS ARE TO FACE OF VIEW SHOWN AND AUTOMATICALLY ROUNDED BY COMPUTER FOR INSPECTION (SEE MATH MODEL FOR PRECISE DIMENSION) FOR ALL OTHER DIMENSIONS NOT SHOWN BUT REQUIRED FOR TOOL BUILD SEE MATH MODEL FOR PRECISE TOOL PATH DATA.

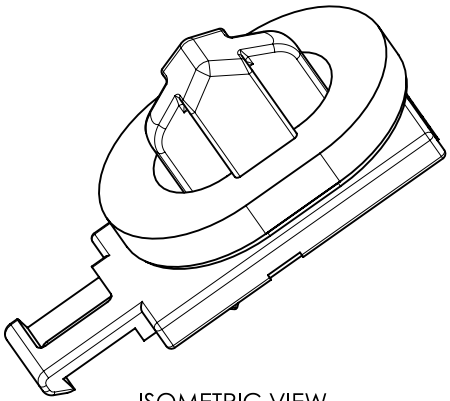
2. DRAWING TO BE INTERPRETED IN ACCORDANCE WITH ANSI Y14.5M-1994 AS AMENDED BY THE GW GLOBAL DIMENSIONING AND TOLERANCING ADDENDUM-1997. ALL GEOMETRIC TOLERANCES AND RELATED DATUMS APPLY RFS. RULE #1 (PERFECT FORM AT MMC) DOES NOT APPLY WHEN RELATIONSHIP BETWEEN FEATURES IS ESTABLISHED BY ORIENTATION OR LOCATION TOLERANCES. SEPARATE POSITION CALLOUTS MAY BE GAGED SEPARATELY, REGARDLESS OF DATUM REFERENCE. ALL DIMENSIONS ARE IN MILLIMETERS.

3. THIS PRODUCT IS NOT CATEGORIZED AS AN APPEARANCE ITEM, MINOR IMPERFECTIONS INCLUDING, BUT NOT LIMITED TO, FLOW MARKS, COLOR BLEMISHES, GATE VESTIGE, AND SOFT FLASH THAT DO NOT AFFECT THE FIT, FORM, OR FUNCTION OF THE PART ARE PERMISSIBLE PER SPEC : S-QA-10.3-9

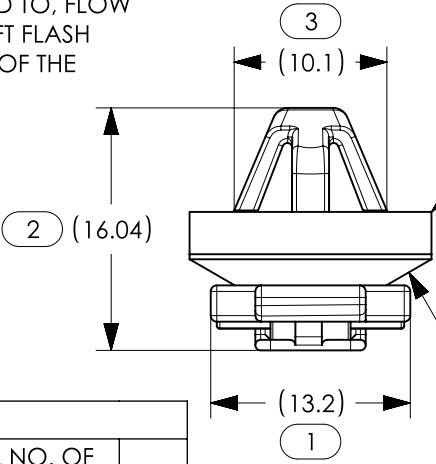
4. FOR Ø 7 X 12 MM HOLE WITH PANEL THICKNESS OF 1.4-1.6 MM



GASKET CAN PROTRUDE ON CLIP ANTI-RATTLE FEATURE



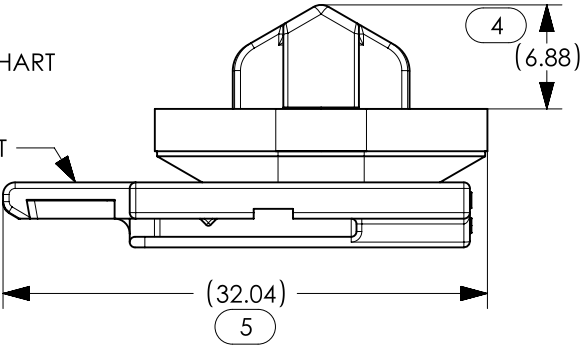
ISOMETRIC VIEW



SEAL GASKET - SEE CHART

MOUN CLIP - SEE CHART

ANTI-RATTLE FEATURE



| SYMBOL DEFINITION | | |
|---|-----------------------------------|---|
| A DIMENSION WITHOUT AN INSPECTION REPORT SYMBOL DOES NOT REQUIRE INSPECTION. IT MAY BE CONTROLLED ON THE INDIVIDUAL COMPONENT DRAWING. | TOTAL NO. OF INSPECTIONS REQUIRED | 5 |
| | LAST NO. USED | 5 |

| PART NO | MOUN CLIP | SEAL GASKET |
|----------|-----------|-------------|
| 15504588 | 15504589 | 13754700 |

THIS DRAWING SUPERCEDES DELPHI DWG: 15504588 REV 01

| | | | | | | | | | |
|--|--|--|--|-----|----------|----------------------------|----------|-------------------------------|-----|
| Material PA66HIRHSUV SAME AS POLYAMIDE Color: BLACK | Units millimeters | The copyright of this drawing is reserved by HellermannTyton. It is issued on condition that it is not reproduced, copied or disclosed to a third party, either wholly or in part, without the consent of HellermannTyton. | Drawn | NHK | 08/24/18 | Article/Type-No | 15504588 | Scale | 2:1 |
| | Tolerance defined on each dimension | | Approved | EJF | 08/24/18 | Title ASM MOUN CLIP | | Project Number 18-1965 | |
| | | | HellermannTyton | | | | | | |
| | | | North America Email: corp@htamericas.com Web: www.hellermann.tyton.com | | | Drawing-No | | | |