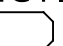
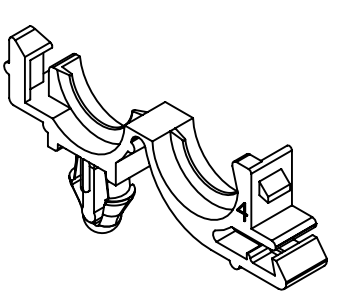
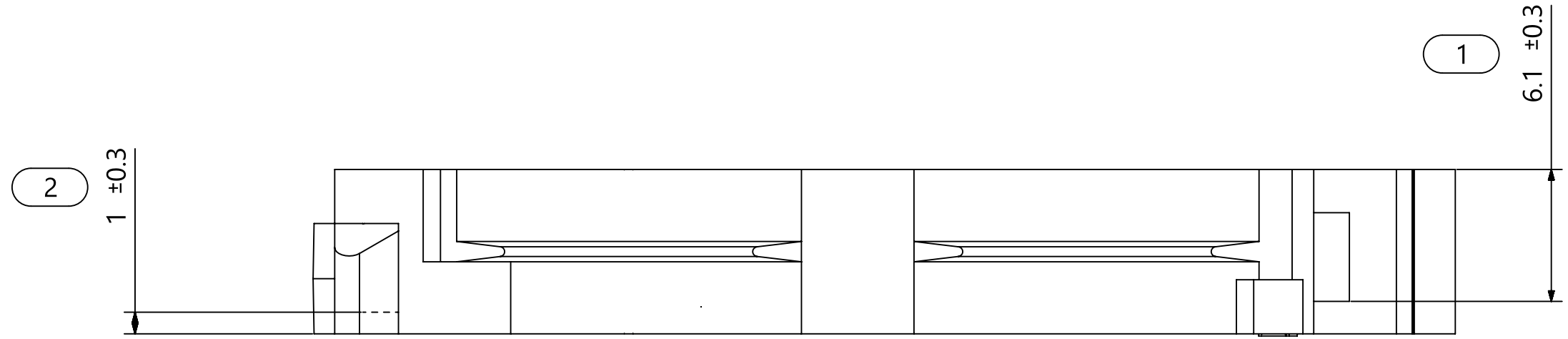
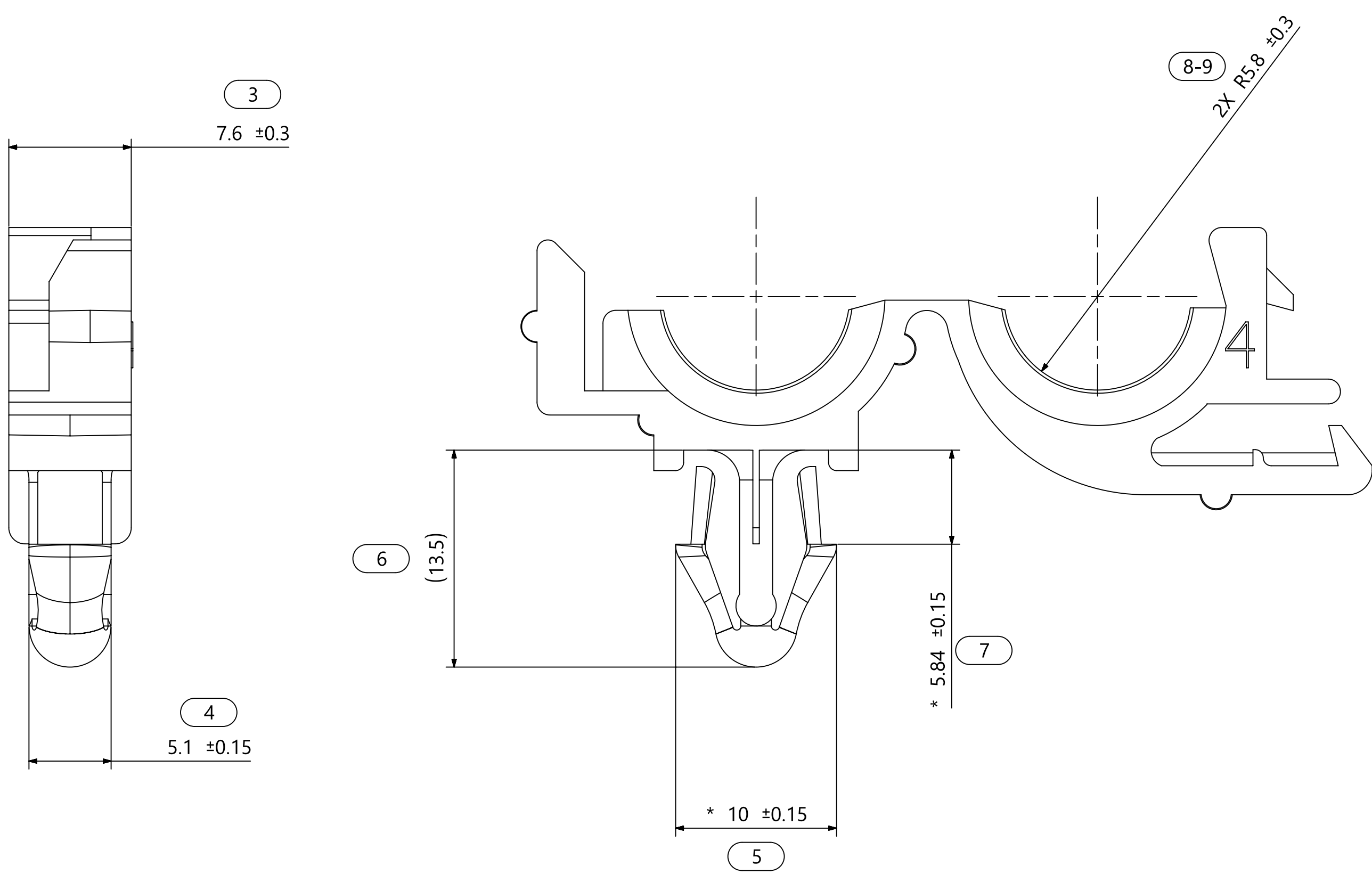


SYMBOL DEFINITION			MISSING NUMBERS
A DIMENSION WITHOUT AN INSPECTION REPORT SYMBOL  DOES NOT REQUIRE INSPECTION. IT MAY BE CONTROLLED ON AN INDIVIDUAL COMPONENT DRAWING	TOTAL NO. OF SYMBOLS ON DRAWING	8	
	LAST NO. USED	9	



Isometric view  
Scale: 1:1



Reference Notes:

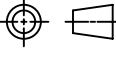
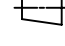
- Unless otherwise specified and/or indicated:  
Dimensions are to face of view shown and automatically rounded by computer for inspection.  
(See math model for precise dimensions).  
For all other dimensions not shown but required for tool build, see math model for precise tool path data.
- This product is not categorized as an appearance item, minor imperfections including, but not limited to, flow marks, color blemishes, gate vestige, and soft flash that do not affect the fit, form, or function of the part are permissible per S-QA-10.3-9.
- Material recycling code per ISO 11469. (2.3) X (0.1) characters as shown to be located on any exterior surface.  
Optional construction to be no material recycling code.
- (2.3) X (0.1) Delphi corporate brand to be located on any exterior surface, preferably visible at final assembly.  
Optional construction for existing tooling may be "PED" or no logo.
- This part to accept 10.5 (0.413") convoluted conduit.
- Dimensions marked with \* may vary -0.64 due to bow.
- Material see chart.

Performance Requirements:

- Sheet metal thickness: 3.8mm max thick stock.
- Applicable hole size:  $\varnothing 6$  -  $\varnothing 6.6$ mm.

Part number	Global part description	Material	Color
12004446	CDC10AH6.35-PP-BK	PP	Black

This drawing supercedes Delphi DWG: 12004446 Rev 02

Revision Level			Revision Record				The copyright of this drawing is reserved by HellemannTytton.	Drawn	Date (YYYY/MM/DD)	Title		Scale
Drawing	State	Part	ECN	017460				Rubenkov	2023/03/31			4:1
03.1	Design Release	-						Approved	2023/03/31	Mount Clip CDT 10mm		Global Project Number
Changed	Date (YYYY/MM/DD)							Haftarski	2023/03/31			18-2151
Rubenkov	2023/03/31									Drawing-No		Format
Approved	Date (YYYY/MM/DD)											A1
Haftarski	2023/03/31									18-2151-001-CSU		Sheet
												1 / 1