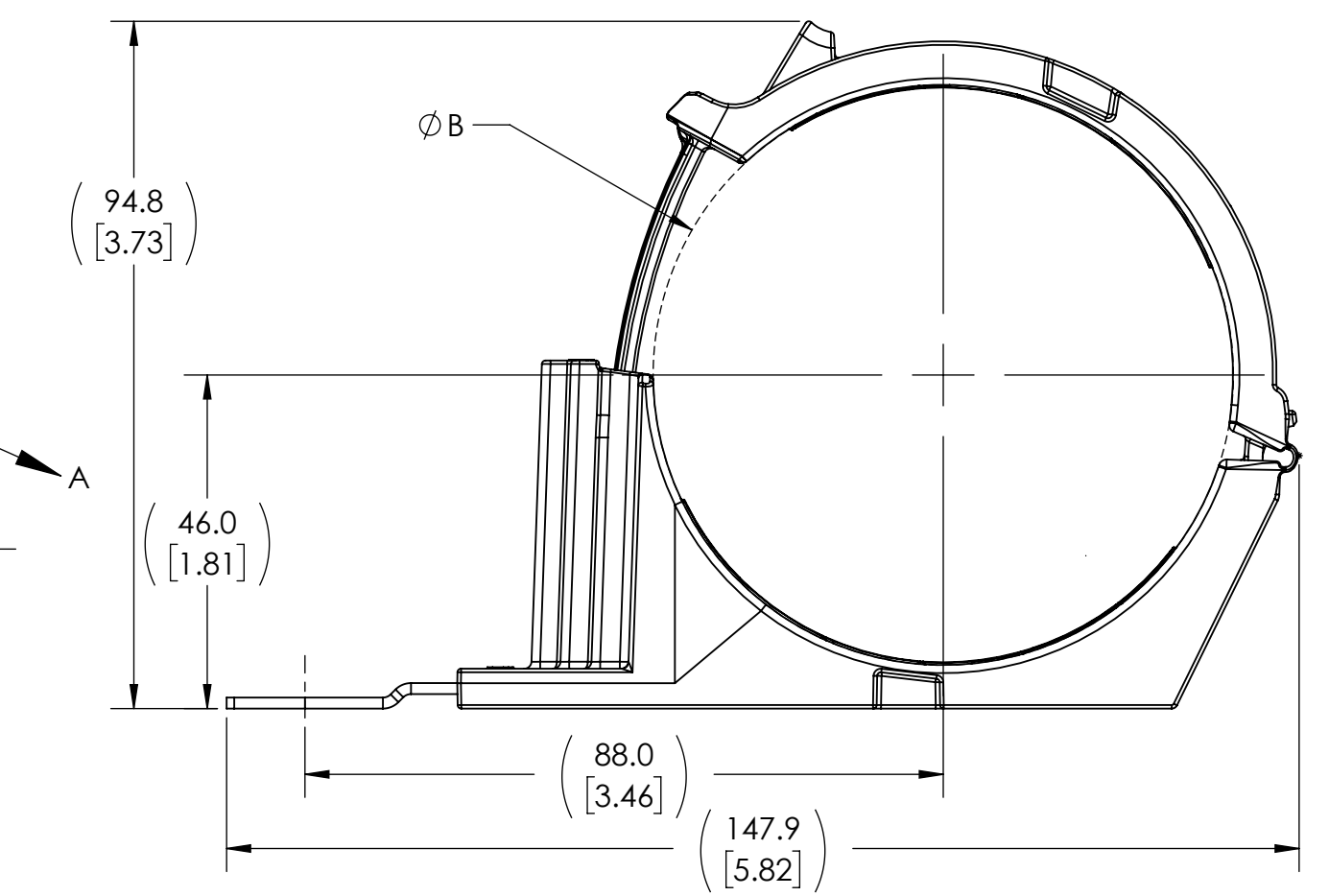
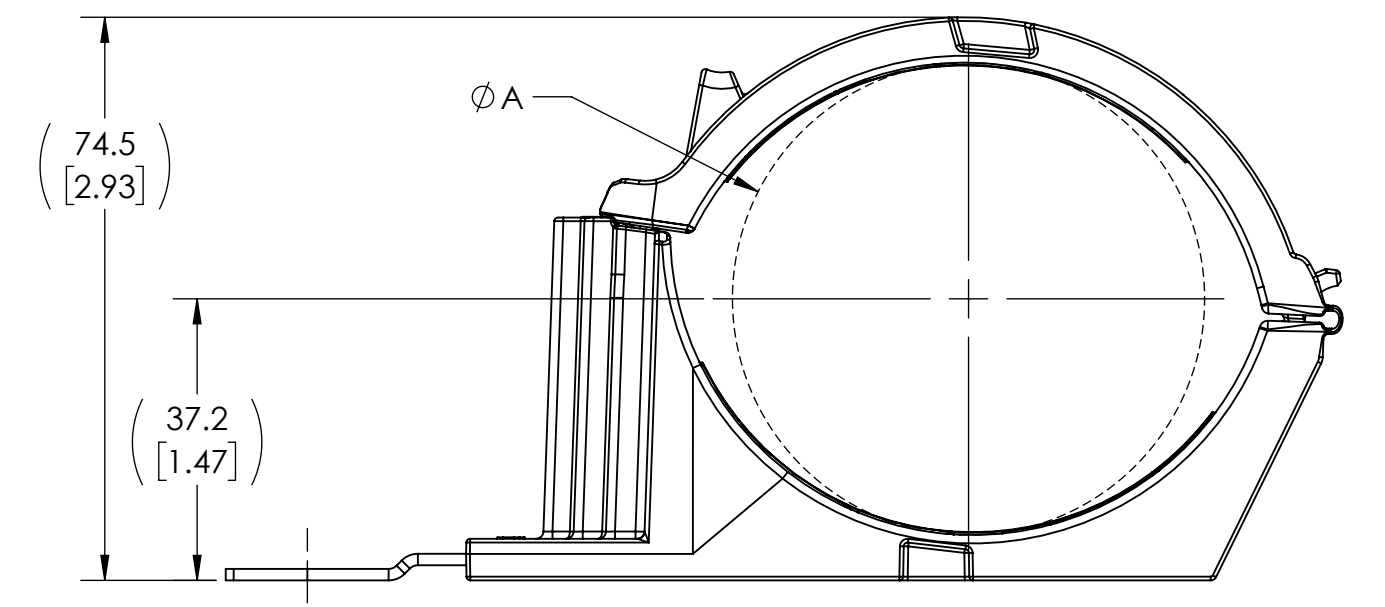
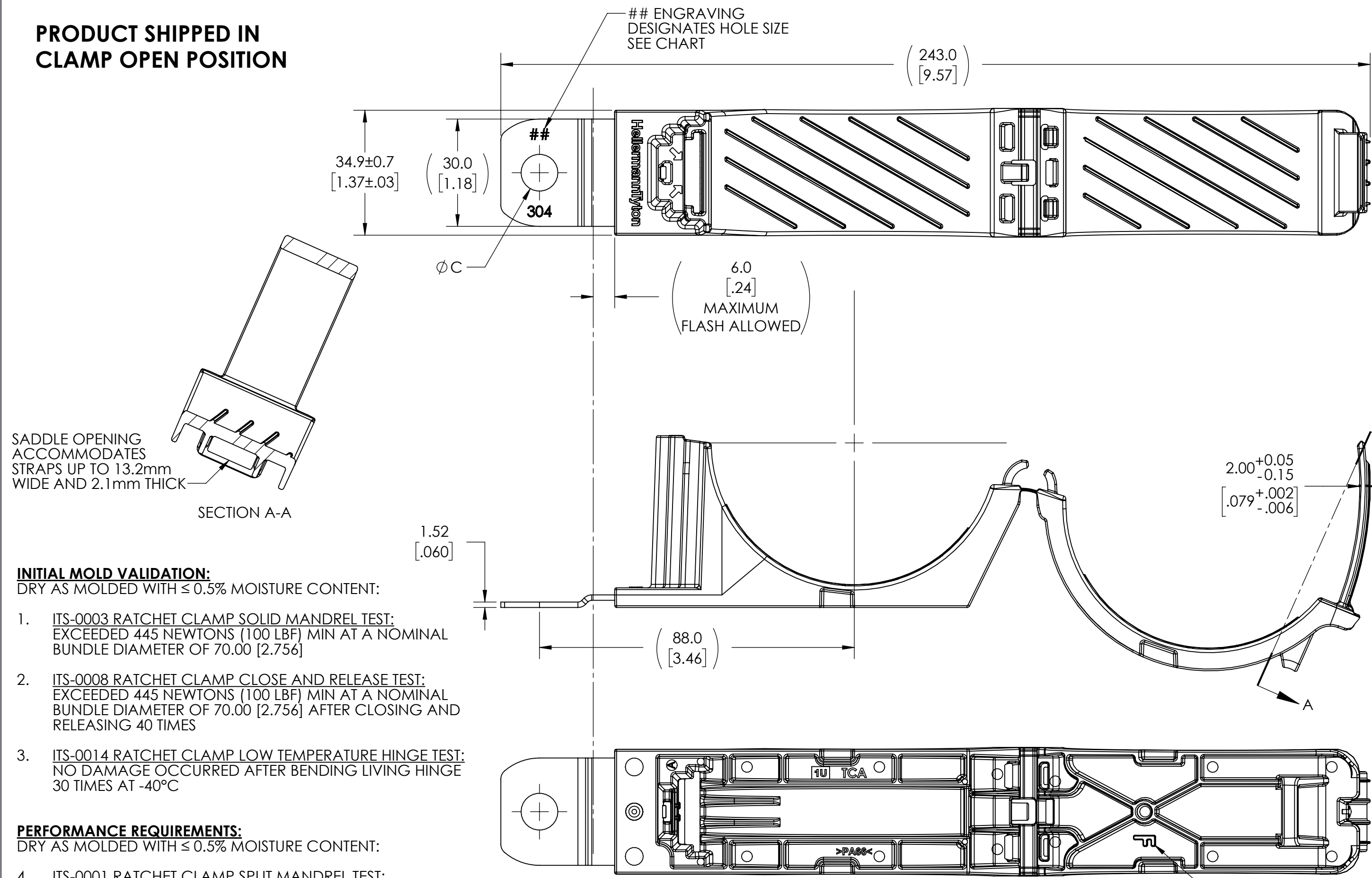


PRODUCT SHIPPED IN CLAMP OPEN POSITION



- INITIAL MOLD VALIDATION:**
DRY AS MOLDED WITH ≤ 0.5% MOISTURE CONTENT:
- ITS-0003 RATCHET CLAMP SOLID MANDREL TEST: EXCEEDED 445 NEWTONS (100 LBF) MIN AT A NOMINAL BUNDLE DIAMETER OF 70.00 [2.756]
 - ITS-0008 RATCHET CLAMP CLOSE AND RELEASE TEST: EXCEEDED 445 NEWTONS (100 LBF) MIN AT A NOMINAL BUNDLE DIAMETER OF 70.00 [2.756] AFTER CLOSING AND RELEASING 40 TIMES
 - ITS-0014 RATCHET CLAMP LOW TEMPERATURE HINGE TEST: NO DAMAGE OCCURRED AFTER BENDING LIVING HINGE 30 TIMES AT -40°C

- PERFORMANCE REQUIREMENTS:**
DRY AS MOLDED WITH ≤ 0.5% MOISTURE CONTENT:
- ITS-0001 RATCHET CLAMP SPLIT MANDREL TEST: 445 NEWTONS (100 LBF) MIN AT A NOMINAL DIAMETER OF 70.00 [2.756]
 - MAXIMUM PERCENT REGRIND PERMISSIBLE: 25%
 - MAXIMUM ALLOWABLE FLASH TO BE: 0.25mm
 - MAXIMUM ALLOWABLE MISMATCH TO BE 0.25mm

NOTE: TESTING #1, #2, #3 AND #4 CAN BE DONE ON ANY TYPE NUMBER AND WILL APPLY TO ALL OTHER TYPE NUMBERS IN THE CHART

Revision level			Revision Record	Changed	Date	Approved	Date
Drawing	State	Part					
04.1	Design Release	-	SEE ECN# 015920	MHT	05/22/2020	GAL	05/22/2020

BUNDLE TYPES	A	B
	MINIMUM DIAMETER	MAXIMUM DIAMETER
SOFT	63.0 [2.48]	80.0 [3.15]
HARD	62.2 [2.45]	79.2 [3.12]

GLOBAL PART DESCRIPTION	MATERIAL	COLOR	C	TYPE	##
			±0.13		ENGRAVING
RCF180SM6SS-PA66HIRHSUV-BK	PA66HIRHSUV	BLACK	6.50 [.256]	RCF180SM6SS	6
RCF180SM8SS-PA66HIRHSUV-BK	PA66HIRHSUV	BLACK	8.31 [.327]	RCF180SM8SS	8
RCF180SM10SS-PA66HIRHSUV-BK	PA66HIRHSUV	BLACK	10.29 [.405]	RCF180SM10SS	10
RCF180SM12SS-PA66HIRHSUV-BK	PA66HIRHSUV	BLACK	12.95 [.510]	RCF180SM12SS	12

Notes	Material	Units: millimeters	Drawn	MHT	03/29/2019	Article/Type-No	SEE CHART	Scale	1:1
	1. PA66HIRHSUV 2. STAINLESS STEEL	Dimension without tolerances details to: .xxx = ±.013 .xx = ±.13 .x = ±.3 None = ±.8 < = ±0.5*	Approved	CTF	03/29/2019	Title	RATCHET P-CLAMP, SIZE F, 180° SHORT, CLAMP RANGE 63.0 TO 80.0, STAINLESS STEEL	Project Number	PRP19-1057
			The copyright of this drawing is reserved by HellermannTyton. It is issued on condition that it is not reproduced, copied, or disclosed to a third party, either wholly or in part, without the consent of HellermannTyton.		HellermannTyton North America Email: corp@htamericas.com Web: www.hellermann.tyton.com		Drawing-No	19-1057-106-CSU	Format
							Production : Phase	Sheet	1/1