

Isometric View
Scale 2 : 3

Reference:

1. Material: See chart
2. Material color: See chart
3. Magnets are very strong. Handling them with care is necessary to prevent personal injuries, property damages and magnet damages
4. Listed pull force values are based on magnet strength only. Assembled product performance will vary based on application and surface type. Please test application to determine best product fit

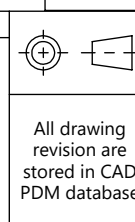
J-Hook Cable Capacity	
Area 3.97 in ² Ø2.0 in.	
Cable Type	Qty.
CAT. 5e	80
CAT. 6	50
CAT.6A	20-30

Load Ratings	
Magnet Cup	400N (90 lbf) Vertical Pull
J-Hook	75N (17 lbf) Vertical Pull
All magnet testing performed using 3mm min. thick 1008-1010 steel plate	

Global Part Description	Item No.	Qty.	Material	Finish	Color
MAGJH90SL-NDFEB45/ST-ML	1	1	Steel	Nickel	Silver
		1	NdFeB N45M	NiCuNi	
	2	1	Steel	Zinc	Silver
	3	1		Zinc	Yellow

Revision level		
Drawing	State	Part
00.0	Design Release	-
Changed	Date (YYYY/MM/DD)	
Johnson	2023/04/18	
Approved	Date (YYYY/MM/DD)	
Toll	2023/04/20	

Revision Record	
ECN 017485 - Initial Release	



The copyright of this drawing is reserved by HellermannTyton.

Drawn	Date (YYYY/MM/DD)
Johnson	2023/04/18
Approved	Date (YYYY/MM/DD)
Toll	2023/04/20

Title		Scale	1:1
Magnetic J-Hook, 2 in. diam. hook, Side Mount, 90 lbf pull rate		Global Project Number	23-0075
Drawing-No		Format	A3
23-0075-001-CSU		Sheet	1/1