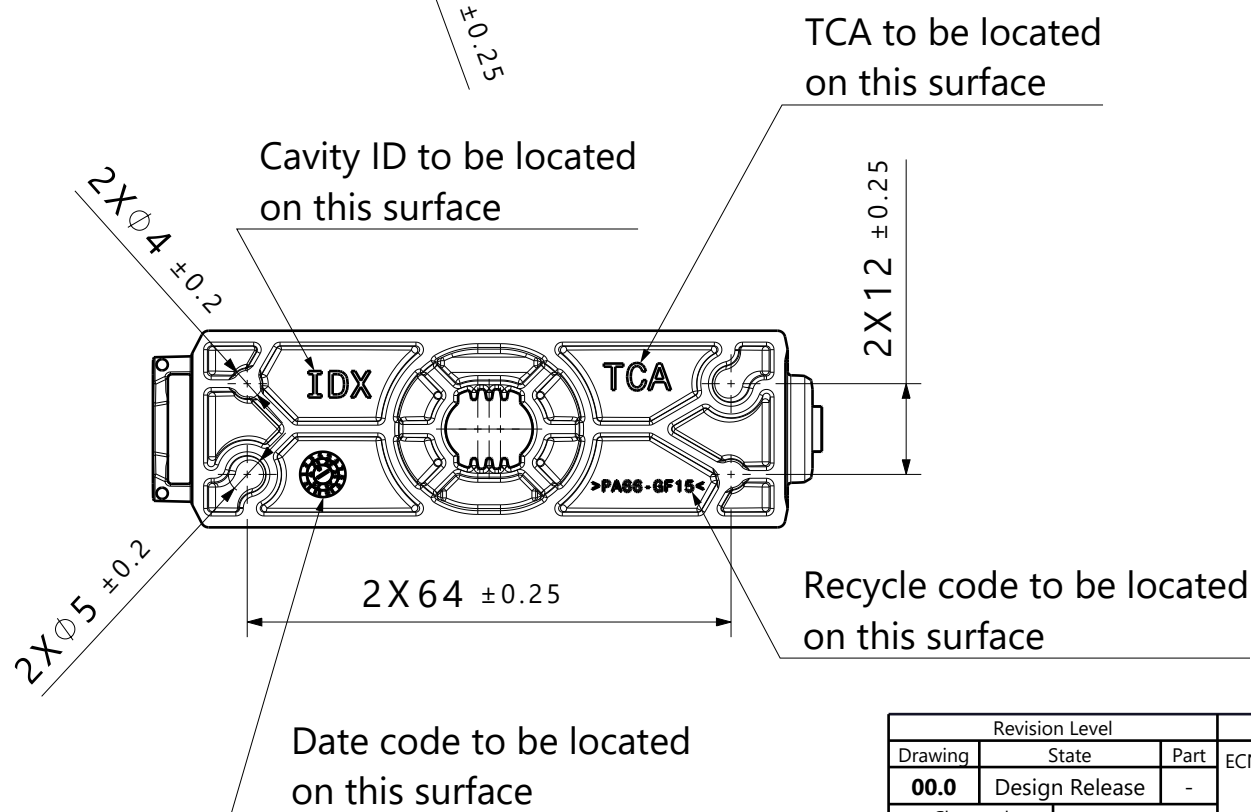
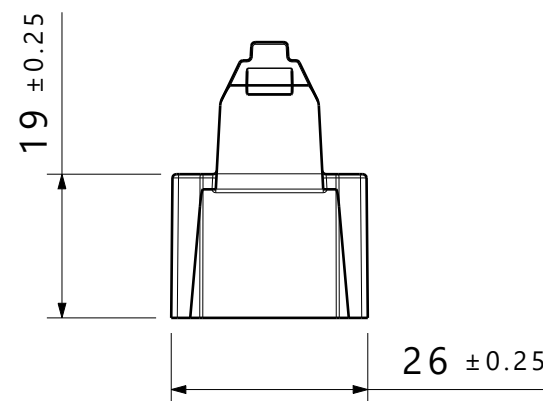
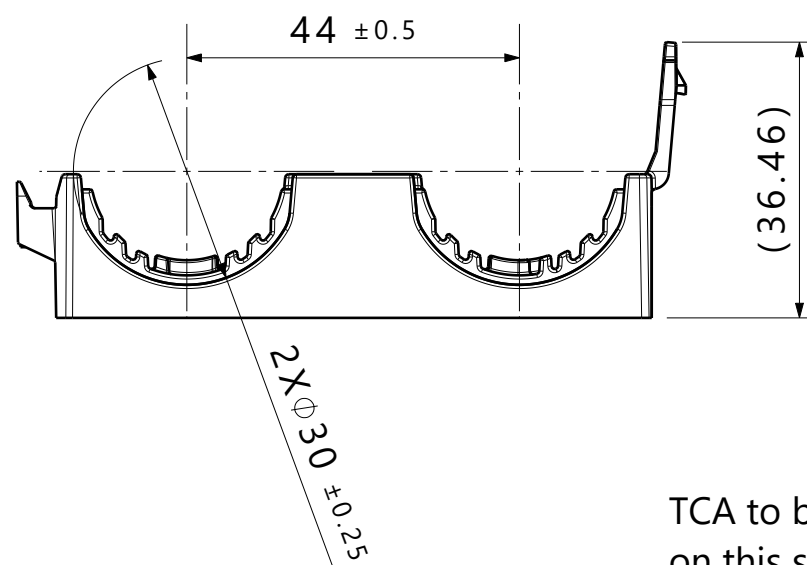


Isometric view



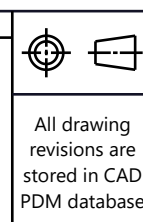
Notes:

1. Material: See chart
2. Material color: See chart
3. Maximum percent regrind permissible: 0%
4. Max allowable flash to be: 0.5mm
5. Max allowable mismatch to be: 0.1mm
6. Applicable stud size:
A. M8 x 1.25
7. Two HDC25X2BASE clamp halves are required for a functional clamp assembly

Global Part Description	Material	Color
HDC25X2BASE-PA66GF15/TPE-BK	PA66-GF15/TPE	Black

Revision Level		
Drawing	State	Part
00.0	Design Release	-
Changed	Date (YYYY/MM/DD)	
Van Hulst	2024/05/31	
Approved	Date (YYYY/MM/DD)	
Rohde	2024/06/04	

Revision Record	
ECN# 311199	



The copyright of this drawing is reserved by HellermannTyton.

Drawn	Date (YYYY/MM/DD)
Van Hulst	2024/05/31
Approved	Date (YYYY/MM/DD)
Rohde	2024/06/04

Units
mm

HellermannTyton
www.HellermannTyton.com

Title		Scale
Dual clamp - 25mm		1:1
Drawing-No		Global Project Number
24-0694-001-CSU		24-0694
		Format
		A3
		Sheet
		1 / 1