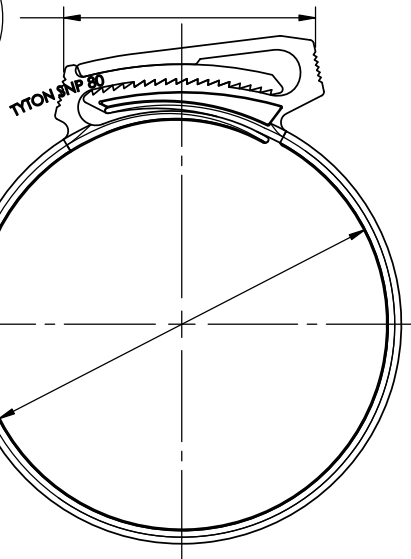


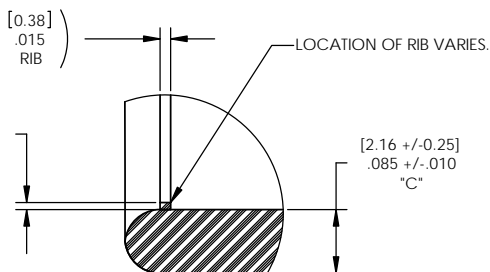
( [47.45]  
1.868  
COMPLETELY COLSED  
"B" )



[79.40±0.51]  
Ø3.126±.020  
SEE NOTE 1  
"D"

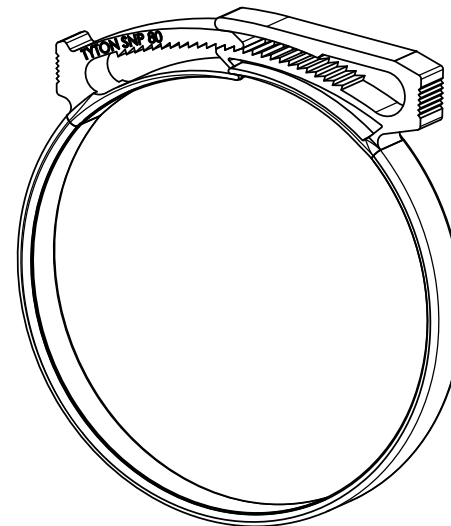
( [0.38]  
.015  
RIB )

( [0.25]  
.010  
RIB  
"G" )

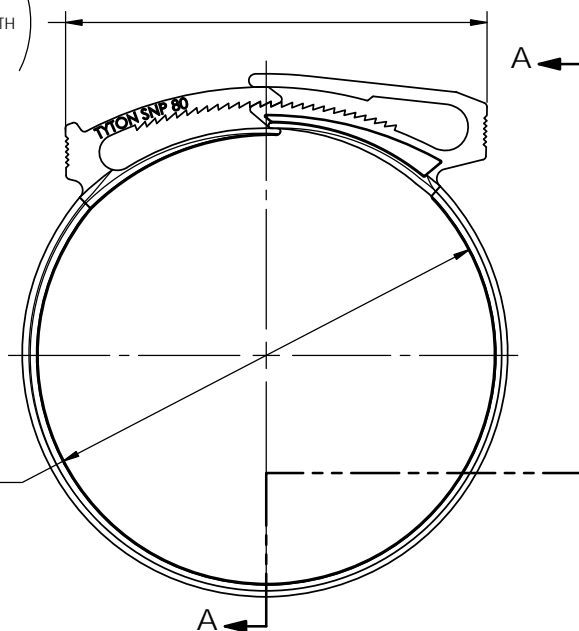


DETAIL B  
SCALE 8 : 1

[2.16 +/-0.25]  
.085 +/--.010  
"C"

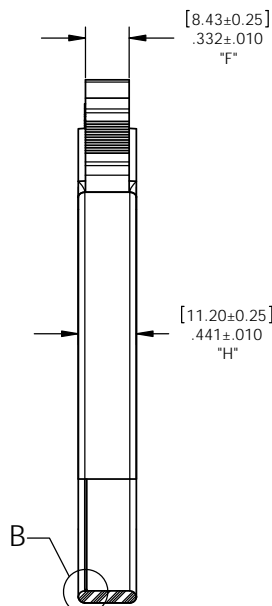


( [78.66]  
3.097  
MAXIMUM 2 TEETH  
ENGAGED  
"A" )



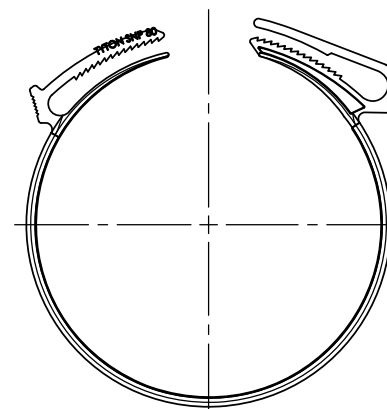
[88.32±0.51]  
Ø3.477±.020  
SEE NOTE 1  
"E"

[8.43±0.25]  
.332±.010  
"F"



SECTION A-A

[11.20±0.25]  
.441±.010  
"H"



AS MOLDED  
FULL SCALE

INVENTORS

**HellermannTyton.**

ALL PROPRIETARY RIGHTS IN THE SUBJECT MATTER SHOWN ON THIS DRAWING ARE EXCLUSIVE PROPERTY OF HELLERMANN TYTON.

name	date	city, state

NOTES

- 1) INSIDE DIAMETERS ARE MEASURED IN THREE PLACES SPACED 120 DEGREES APART EXCLUDING RIB.
- 2) 28 TOTAL TEETH, 18 TEETH POSITIONS.

REVISION

REV	DATE	BY	CHKD	ECN #	PART LEVEL
01	10/29/2003	K.A.C.		004150	-

XXXX = [±0.13]/±.0005
XXX = [±.13]/±.005
XX = [±.3]/±.01
X = [±.8]/±.03
∠ = ±0.5°
unless otherwise specified
units [mm]/inches

number	phase	Production
SNP80_		
name	SNP80 HOSE CLAMP	
material	ACETAL	

format	version	date	scale
C	SW 2004	1.5:1	
customer file name	customer drawing number	customer	approved
CP2080002			
type	Customer	sheet 1 of 1	number
			CP2080002CST

DRAWING